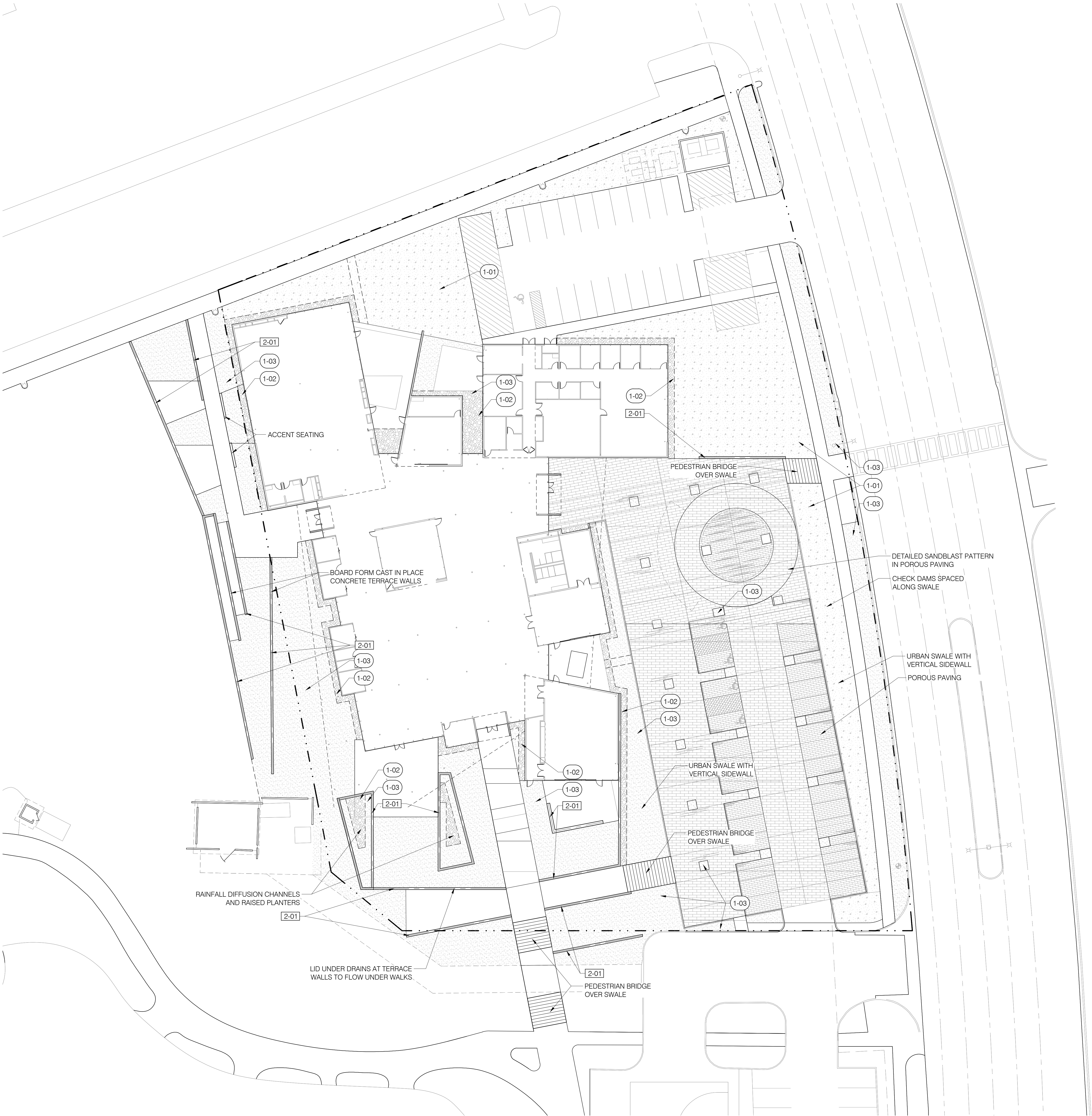


REFERENCE NOTES SCHEDULE

1 - PAVING & SURFACING: DIVISION 32						
CODE	DESCRIPTION	QTY	MANUFACTURER	COLOR	SIZE	
1-01	DESERT PAVING	13,079 SF				
1-02	RIP RAP	2,721 SF	ROCK PROS	CARMEL	3'-8'	
1-03	DECOMPOSED GRANITE	22,127 SF	PIONEER SAND	SANTA FE BROWN	1/2" SCREENED	
2 - WALLS & FENCES: DIVISION 32						
CODE	DESCRIPTION	QTY	FINISH	COLOR	HEIGHT	THICKNESS
2-01	BOARD FORM POURED IN PLACE CONCRETE WALL	2,283 LF	BOARD FORM	STANDARD GREY	6'HT PINE BOARD	HEAVY GRAIN



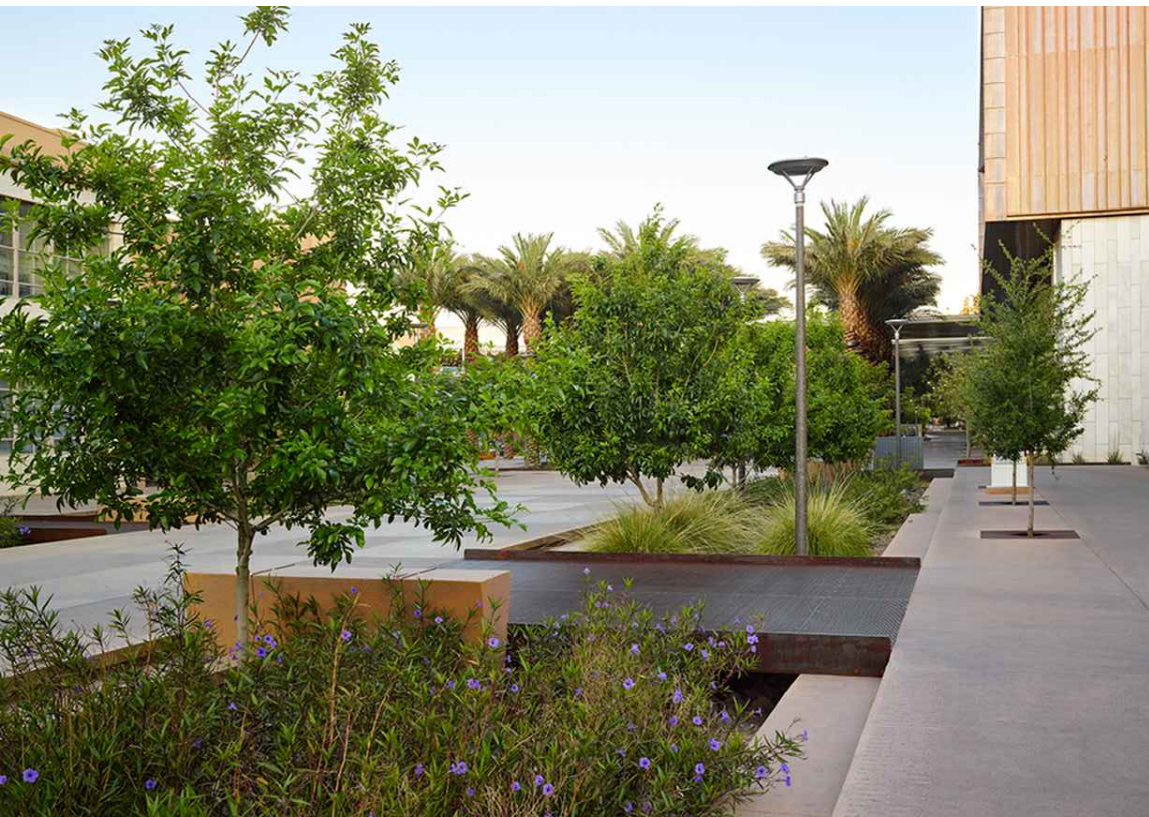
SEE MATERIALS  
SCHEDULE FOR BOARD  
FORM WALL DETAILS



Board Formed Concrete Terrace Walls



Desert 'Pavement' Planting Area



Pedestrian Footbridge Over 'Urban Swale'



Stormwater Diffusion Channel/Planters



Westside Terrace Accent Seating

general notes

descriptive notes

**Site Narrative:**  
The open plan of the various Southeast Mesa Library programs allows for multiple entry points and breakout spaces. Beginning with the entry plaza addressing the street, the tree-lined parking court offers a shady venue for book fairs, library breakout spaces, and emotes accessibility. Cars can move through the plaza for book drop-off, visitor drop-off, and accessible parking. The main entrance on the east side offers a direct connection to the adjacent street and neighborhood beyond the on-site parking. The library approach from the existing parking to the south moves through both riparian and pollinator gardens as visitors traverse the terraces and patio spaces leading to the south entrance. Accessible from both inside the library and outside by the public at-large, these terrace spaces can be activated in various ways, as well as providing circulation around the Southeast Mesa Library site. The entrance on the west side is more informal and park-like, creating a link to the school, playgrounds, and open lawn. The west terraces step down to the existing open green to create an elevated meadow edge overlooking the lawn.

**LID/Water Narrative:**  
A thoughtful stormwater management system integrated into the landscape enhances the quality of patios, plazas, parking, and play spaces. Following this comprehensive stormwater management vision, low-impact development (LID) can meet water quantity and quality requirements while simultaneously promoting the experience and lowering the maintenance.

The two major surface areas on the site, the roof and the parking/plaza spaces, catch, direct, and promote infiltration of water to bioswales, riparian areas, and landscape trees. Small basins and swales around the site spread the retention requirements around to allow these areas to be more natural parts of the site landscape and to augment the irrigation water for the trees.

The plaza swale features, riparian terraces, and textures of the various porous and permeable surfaces, work to keep water front and center, not out-of-sight, out-of-mind. The Southeast Mesa Library site embraces the processes and educational components of stormwater collection as well as the landscape and water quality benefits. Flush paving on all sides of the 'Sunrise Plaza' promotes water collection via various types of permeable paving that feather into planting areas and catch the water. Along the street and along the building two large 'urban swales' collect the remaining runoff, creating green borders to the plaza space.

The large roof structure folds into several catchment areas that funnel into three main areas at the south end of the library. Stormwater diffusion channels receive these flows and allow the water to be metered out into the landscape an garden areas where micro-basins and riparian planting utilize and filter the water before ultimately allowing it to overflow into the sites larger catchment areas.

revisions schedule

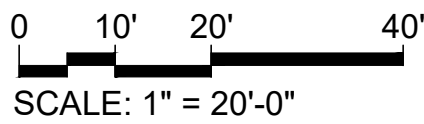
rev #	description	date

4450 NORTH 12TH STREET  
SUITE TWO HUNDRED  
PHOENIX AZ 85014 USA  
602.264.1955 RKARCH.COM

RICHÄRD  
KENNEDY  
ARCHITECTS

**Dig Studio** SOUTHEAST MESA LIBRARY  
MESA PUBLIC LIBRARY  
DESIGN REVIEW | 11/18/2022  
CP0428

LM101  
LAYOUT & MATERIALS PLAN







RENDERED LANDSCAPE PLAN

descriptive notes

**Site Narrative:**  
The open plan of the various Southeast Mesa Library programs allows for multiple entry points and breakout spaces. Beginning with the entry plaza addressing the street, the tree-lined parking court offers a shady venue for book fairs, library breakout spaces, and emotes accessibility. Cars can move through the plaza for book drop-off, visitor drop-off, and accessible parking. The main entrance on the east side offers a direct connection to the adjacent street and neighborhood beyond the on-site parking. The library approach from the existing parking to the south moves through both riparian and pollinator gardens as visitors traverse the terraces and patio spaces leading to the south entrance. Accessible from both inside the library and outside by the public at-large, these terrace spaces can be activated in various ways, as well as providing circulation around the Southeast Mesa Library site. The entrance on the west side is more informal and park-like, creating a link to the school, playgrounds, and open lawn. The west terraces step down to the existing open green to create an elevated meadow edge overlooking the lawn.

**LID/Water Narrative:**  
A thoughtful stormwater management system integrated into the landscape enhances the quality of patios, plazas, parking, and play spaces. Following this comprehensive stormwater management vision, low-impact development (LID) can meet water quantity and quality requirements while simultaneously promoting the experience and lowering the maintenance.

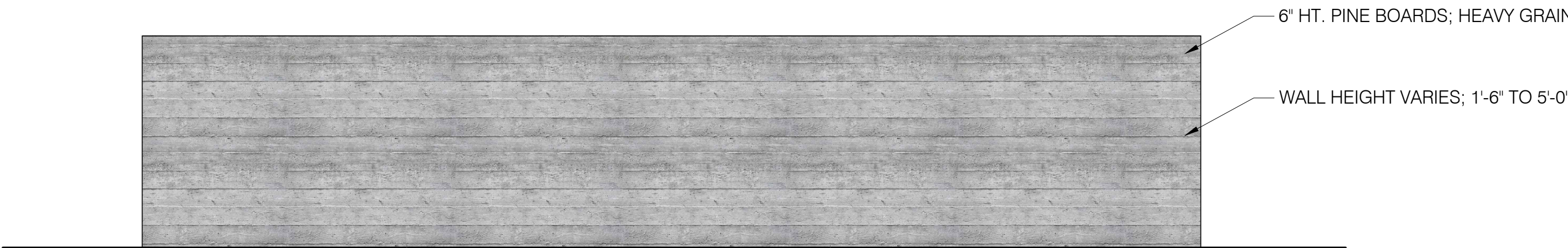
The two major surface areas on the site, the roof and the parking/plaza spaces, catch, direct, and promote infiltration of water to bioswales, riparian areas, and landscape trees. Small basins and swales around the site spread the retention requirements around to allow these areas to be more natural parts of the site landscape and to augment the irrigation water for the trees.

The plaza swale features, riparian terraces, and textures of the various porous and permeable surfaces, work to keep water front and center, not out-of-sight, out-of-mind. The Southeast Mesa Library site embraces the processes and educational components of stormwater collection as well as the landscape and water quality benefits. Flush paving on all sides of the 'Sunrise Plaza' promotes water collection via various types of permeable paving that feather into planting areas and catch the water. Along the street and along the building two large 'urban swales' collect the remaining runoff, creating green borders to the plaza space.

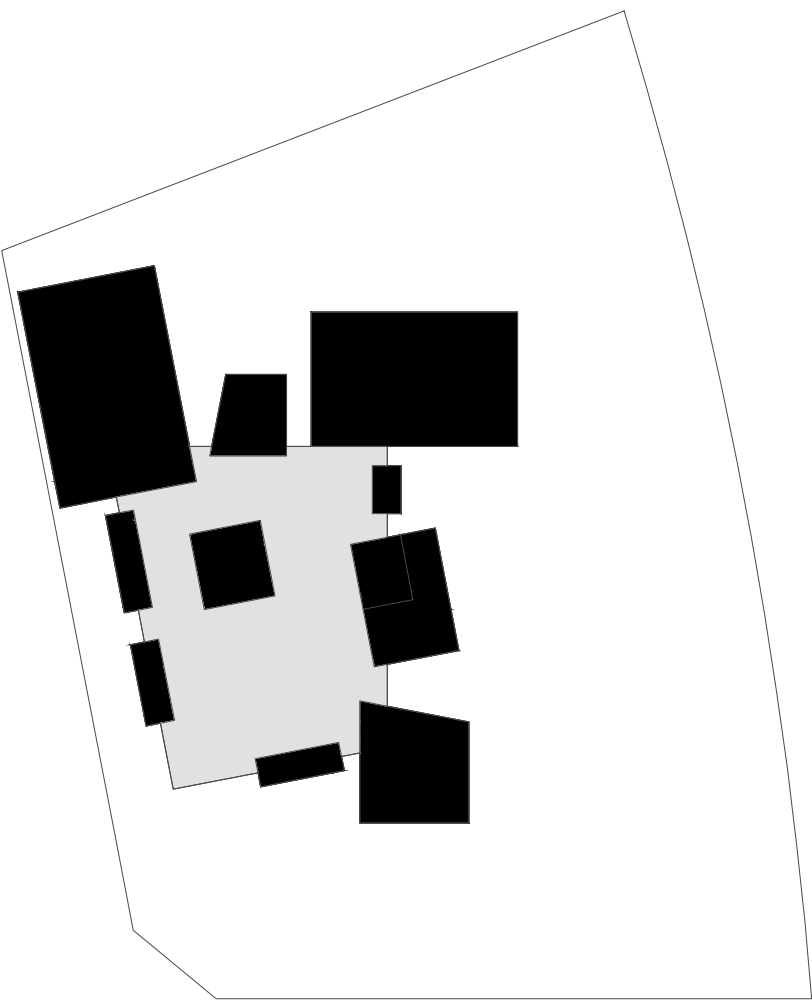
The large roof structure folds into several catchment areas that funnel into three main areas at the south end of the library. Stormwater diffusion channels receive these flows and allow the water to be metered out into the landscape an garden areas where micro-basins and riparian planting utilize and filter the water before ultimately allowing it to overflow into the sites larger catchment areas.

revisions schedule

rev #	description	date
1		
2		
3		
4		
5		



TYPICAL BOARDFORM CONCRETE WALL ELEVATION



0 10' 20' 40'  
SCALE: 1" = 20'-0"

4450 NORTH 12TH STREET  
SUITE TWO HUNDRED  
PHOENIX AZ 85014 USA  
602.264.1955 RKARCH.COM

**RICHÄRD  
KENNEDY**  
ARCHITECTS

**Dig**  
Studio  
SOUTHEAST MESA LIBRARY  
MESA PUBLIC LIBRARY  
DESIGN REVIEW | 11/18/2022  
CP0428

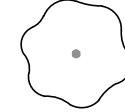
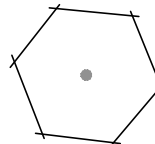
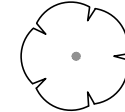
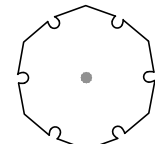
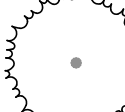

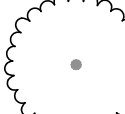
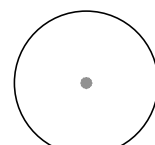
**LM102**  
**RENDERED PLAN**



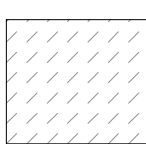
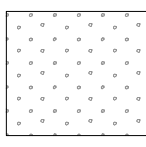
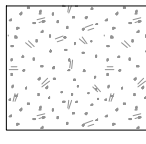
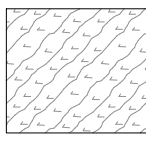
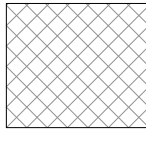
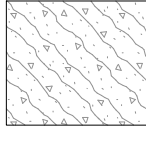
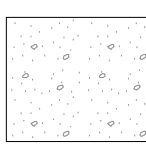
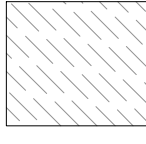
REFERENCE NOTES SCHEDULE

1 - PAVING & SURFACING: DIVISION 32						
CODE	DESCRIPTION	QTY	MANUFACTURER	COLOR	SIZE	
1-01	DESERT PAVING	SF				
1-02	RIP RAP	SF	ROCK PROS	CARMEL	3"-8"	
1-03	DECOMPOSED GRANITE	SF	PIONEER SAND	SANTA FE BROWN	1/2" SCREENED	
2 - WALLS & FENCES: DIVISION 32						
CODE	DESCRIPTION	QTY	FINISH	COLOR	HEIGHT	THICKNESS
2-01	BOARD FORM POURED IN PLACE CONCRETE WALL	2,283 LF	BOARD FORM	STANDARD GREY	6'HT PINE BOARD	HEAVY GRAIN

PLANT SCHEDULE

TREES	BOTANICAL / COMMON NAME	SIZE
	DERMATOPHYLLUM SECUNDIFLORUM TEXAS MOUNTAIN LAUREL	24" BOX
	EUCALYPTUS PAPUANA GHOST GUM	36" BOX, 3" CAL
	EYSENHARDTIA ORTHOCARPA KIDNEYWOOD	24" BOX
	OLNEYA TESOTA DESERT IRONWOOD	36" BOX, 3" CAL
	PARKINSONIA X 'DESERT MUSEUM' DESERT MUSEUM PALO VERDE	36" BOX, 3" CAL
	PHOENIX DACTYLIFERA DATE PALM	16" HT.
	PROSOPIS GLANDULOSA 'MAVERICK' MAVERICK THORNLESS HONEY MESQUITE	36" BOX, 3" CAL
	QUERCUS FUSIFORMIS 'JOAN LIONETTI' JOAN LIONETTI TEXAS LIVE OAK	36" BOX, 3" CAL

CONCEPT PLANT SCHEDULE

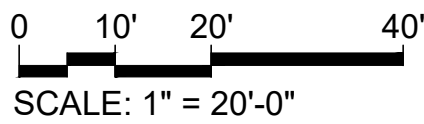
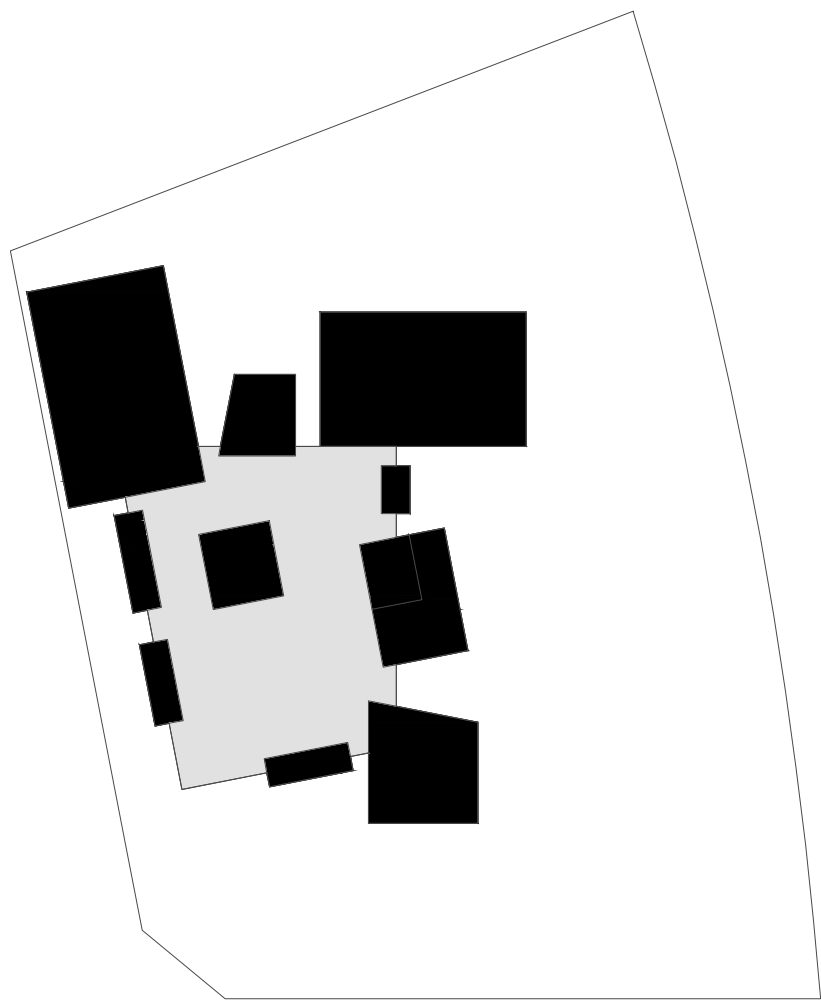
	SUNRISE PLAZA XERIC ASCLEPIAS TUBEROSA / BUTTERFLY MILKWEED BAILEYA MULTIRADIATA / DESERT MARIGOLD BOUVARDIA TERNIFOLIA / SCARLET BOUVARDIA CALYLOPHUS HARTWEGII / HARTWEG'S SUNDROPS HESPERALOE PARVIFLORA 'PERPA' / BRAKELIGHTS® RED YUCCA JUSTICIA CALIFORNICA / CHUPAROSA LANTANA X NEW GOLD / NEW GOLD LANTANA SPHAERALCEA AMBIGUA 'LOUIS HAMILTON' / LOUIS HAMILTON GLOBEMALLOW	3,730 SF 17 11 17 11 15 15 11 15	1 GAL 1 GAL 5 GAL 1 GAL 5 GAL 5 GAL 1 GAL 1 GAL	15% @ 72" oc 10% @ 72" oc 15% @ 72" oc 10% @ 72" oc 13.34% @ 72" oc 13.30% @ 72" oc 10% @ 72" oc 13.33% @ 72" oc
	SUNRISE PLAZA RIPARIAN ANISACANTHUS THURBERI / THURBER'S DESERT HONEYSUCKLE EPILOBIUM CANUM / CALIFORNIA FUCHSIA JUSTICIA SPICIGERA / MEXICAN HONEYSUCKLE OENOTHERA ELATA / HOOKER'S EVENING PRIMROSE TECOMA STANS ANGUSTATA / YELLOW BELLS	5,738 SF 34 34 34 34 34	5 GAL 5 GAL 5 GAL 1 GAL 5 GAL	20% @ 72" oc 20% @ 72" oc 20% @ 72" oc 20% @ 72" oc 20% @ 72" oc
	POLLINATOR GARDEN XERIC ASCLEPIAS LATIFOLIA / BROADLEAF MILKWEED ASCLEPIAS TUBEROSA / BUTTERFLY MILKWEED BAILEYA MULTIRADIATA / DESERT MARIGOLD BERBERIS HAEMATOCARPA / RED BARBERRY BOUVARDIA TERNIFOLIA / SCARLET BOUVARDIA CUPHEA HYSSOPIFOLIA / FALSE HEATHER DALEA PULCHRA / SANTA CATALINA PRAIRIE CLOVER ERICAMERIA LARICIFOLIA 'AGUIRRE' / AGUIRRE TURPENTINE BUSH FOUQUIERIA SPLENDENS / OCOTILLO GAILLARDIA PULCHELLA / ANNUAL GAILLARDIA GLANDULARIA GOODDINGII / GOODDING'S VERBENA JUSTICIA CALIFORNICA / CHUPAROSA LEUCOPHYLLUM FRUTESCENS / TEXAS SAGE LINUM LEWISII 'BLUE FLAX' / BLUE FLAX OENOTHERA LINDHEIMERI / GAURA OENOTHERA SPECIOSA / MEXICAN EVENING PRIMROSE PLUMBAGO SCANDENS / MEXICAN PLUMBAGO SPHAERALCEA AMBIGUA 'LOUIS HAMILTON' / LOUIS HAMILTON GLOBEMALLOW	2,321 SF 9 9 9 10 9 9 9 10 1 8 9 10 10 9 9 10 10	1 GAL 1 GAL 1 GAL 5 GAL 1 GAL 3 GAL 5 GAL 15 GAL SEED 1 GAL 5 GAL 5 GAL 5 GAL 1 GAL 1 GAL 5 GAL 5 GAL	5.35% @ 48" oc 5.35% @ 48" oc 5.83% @ 48" oc 6.25% @ 48" oc 5.36% @ 48" oc 5.83% @ 48" oc 5.36% @ 48" oc 6.25% @ 48" oc 2.5% @ 120" oc 5% @ 48" oc 5.84% @ 48" oc 6.25% @ 48" oc 6.25% @ 48" oc 5.36% @ 48" oc 5.36% @ 48" oc 6.25% @ 48" oc 6.25% @ 48" oc
	POLLINATOR GARDEN RIPARIAN ALOYSIA GRATISSIMA / WHITEBRUSH ANISACANTHUS THURBERI / THURBER'S DESERT HONEYSUCKLE ASCLEPIAS ANGUSTIFOLIA / ARIZONA MILKWEED CALLANDRA ERIOPHYLLA / FAIRY DUSTER CONOCLINIUM DISSECTUM 'BOOTHILL' / BOOTHILL MISTFLOWER EPILOBIUM CANUM / CALIFORNIA FUCHSIA HYPTIS EMORYI / DESERT LAVENDER JUSTICIA SPICIGERA / MEXICAN HONEYSUCKLE OENOTHERA ELATA / HOOKER'S EVENING PRIMROSE RUELLIA NUDIFLORA / MEXICAN PETUNIA TECOMA STANS ANGUSTATA / YELLOW BELLS	604 SF 4 4 4 4 4 4 4 4 4 4 4 4	5 GAL 5 GAL 1 GAL 1 GAL 3 GAL 5 GAL 5 GAL 5 GAL 5 GAL 1 GAL 5 GAL 5 GAL	8.34% @ 48" oc 8.33% @ 48" oc 10% @ 48" oc 10% @ 48" oc 10% @ 48" oc 10% @ 48" oc 8.33% @ 48" oc 8.34% @ 48" oc 10% @ 48" oc 8.33% @ 48" oc 8.33% @ 48" oc
	RIPARIAN ASCLEPIAS ANGUSTIFOLIA / ARIZONA MILKWEED JUSTICIA SPICIGERA / MEXICAN HONEYSUCKLE PANICUM VIRGATUM 'HEAVY METAL' / HEAVY METAL SWITCH GRASS RUELLIA NUDIFLORA / MEXICAN PETUNIA ZEPHYRANTHES X 'PRAIRIE SUNSET' / PRAIRIE SUNSET RAIN LILY	3,670 SF 48 48 48 48 48	1 GAL 5 GAL 5 GAL 5 GAL 1 GAL	20% @ 48" oc 20% @ 48" oc 20% @ 48" oc 20% @ 48" oc 20% @ 48" oc
	SUNSET MEADOW AGAVE X 'BLUE GLOW' / BLUE GLOW AGAVE ARISTIDA PURPUREA / PURPLE THREEAWN BOUTELOUA CURTIPENDULA / SIDE OATS GRAMA FALLUGIA PARADOXA / APACHE PLUME FEROCACTUS WISLIZENI / FISH HOOK BARREL CACTUS HESPERALOE PARVIFLORA 'PERPA' / BRAKELIGHTS® RED YUCCA MUHLENBERGIA LINDHEIMERI / LINDHEIMER'S MUHLY PENSTEMON PALMERI / PALMER'S PENSTEMON YUCCA GLORIOSA / SPANISH DAGGER	7,209 SF 41 313 313 141 41 41 41 313 141 41	5 GAL 5 GAL 3 GAL 1 GAL 5 GAL 5 GAL 5 GAL 5 GAL 5 GAL 1 GAL 5 GAL	8.75% @ 48" oc 16.67% @ 24" oc 16.66% @ 24" oc 7.5% @ 24" oc 8.75% @ 48" oc 8.75% @ 48" oc 16.67% @ 24" oc 7.5% @ 24" oc 8.75% @ 48" oc
	DESERT SHADE XERIC AGAVE DESMETIANA / SMOOTH AGAVE CALYLOPHUS HARTWEGII / HARTWEG'S SUNDROPS CARNEGIEA GIGANTEA / SAGUARO CUPHEA HYSSOPIFOLIA / FALSE HEATHER DASYLIRION WHEELERI / GREY DESERT SPOON FOUQUIERIA SPLENDENS / OCOTILLO GLANDULARIA GOODDINGII / GOODDING'S VERBENA LANTANA MONTEVIDENSIS / PURPLE TRAILING LANTANA LANTANA X NEW GOLD / NEW GOLD LANTANA LEUCOPHYLLUM FRUTESCENS / TEXAS SAGE MIRABILIS MULTIFLORA / COLORADO FOUR O'CLOCK OENOTHERA LINDHEIMERI / GAURA PEDILANTHUS BRACTEATUS / SLIPPER PLUMBAGO SCANDENS / MEXICAN PLUMBAGO	8,080 SF 15 20 4 20 9 4 20 15 15 24 15 15 24 24	5 GAL 1 GAL 8" HT 1 GAL 5 GAL 15 GAL 1 GAL 1 GAL 1 GAL 1 GAL 5 GAL 5 GAL 5 GAL	6.25% @ 72" oc 8.33% @ 72" oc 3.75% @ 120" oc 8.33% @ 72" oc 6.25% @ 96" oc 3.75% @ 120" oc 8.34% @ 72" oc 6.25% @ 72" oc 6.25% @ 72" oc 10% @ 72" oc 6.25% @ 72" oc 6.25% @ 72" oc 10% @ 72" oc 10% @ 72" oc
	DESERT SHADE RIPARIAN ERIOGONUM FASCICULATUM / CALIFORNIA BUCKWHEAT FALLUGIA PARADOXA / APACHE PLUME GOSSYPIUM THURBERI / THURBER'S COTTON RUELLIA NUDIFLORA / MEXICAN PETUNIA TRADESCANTIA OCCIDENTALIS / PRAIRIE SPIDERWORT YUCCA GLORIOSA / SPANISH DAGGER	3,185 SF 19 13 19 19 13 13	5 GAL 1 GAL 5 GAL 5 GAL 1 GAL 1 GAL 5 GAL	20% @ 72" oc 13.34% @ 72" oc 20% @ 72" oc 20% @ 72" oc 20% @ 72" oc 13.33% @ 72" oc 13.33% @ 72" oc

general notes

descriptive notes

revisions schedule

rev #	description	date



4450 NORTH 12TH STREET  
SUITE TWO HUNDRED  
PHOENIX AZ 85014 USA  
602.264.1955 RKARCH.COM

RICHÄRD  
KENNEDY  
ARCHITECTS

Dig Studio SOUTHEAST MESA LIBRARY  
MESA PUBLIC LIBRARY  
DESIGN REVIEW | 11/18/2022  
CP0428

LP001  
PLANTING SCHEDULE



