



# Design Review Board



# DRB22-01080



# Request

- Design Review
- To allow an industrial development

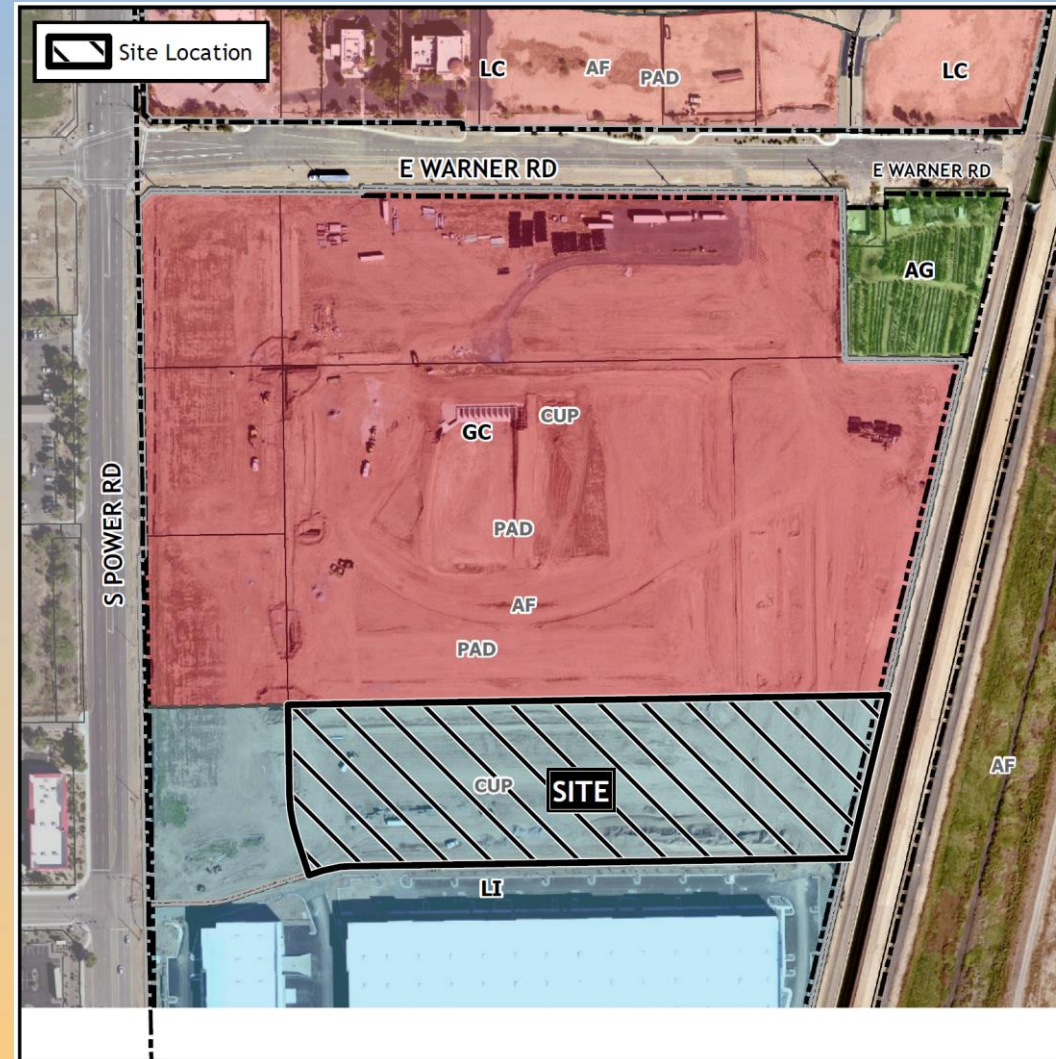






# Location

- SEC of Warner and Power Roads
- North of the Loop 202 SanTan Freeway

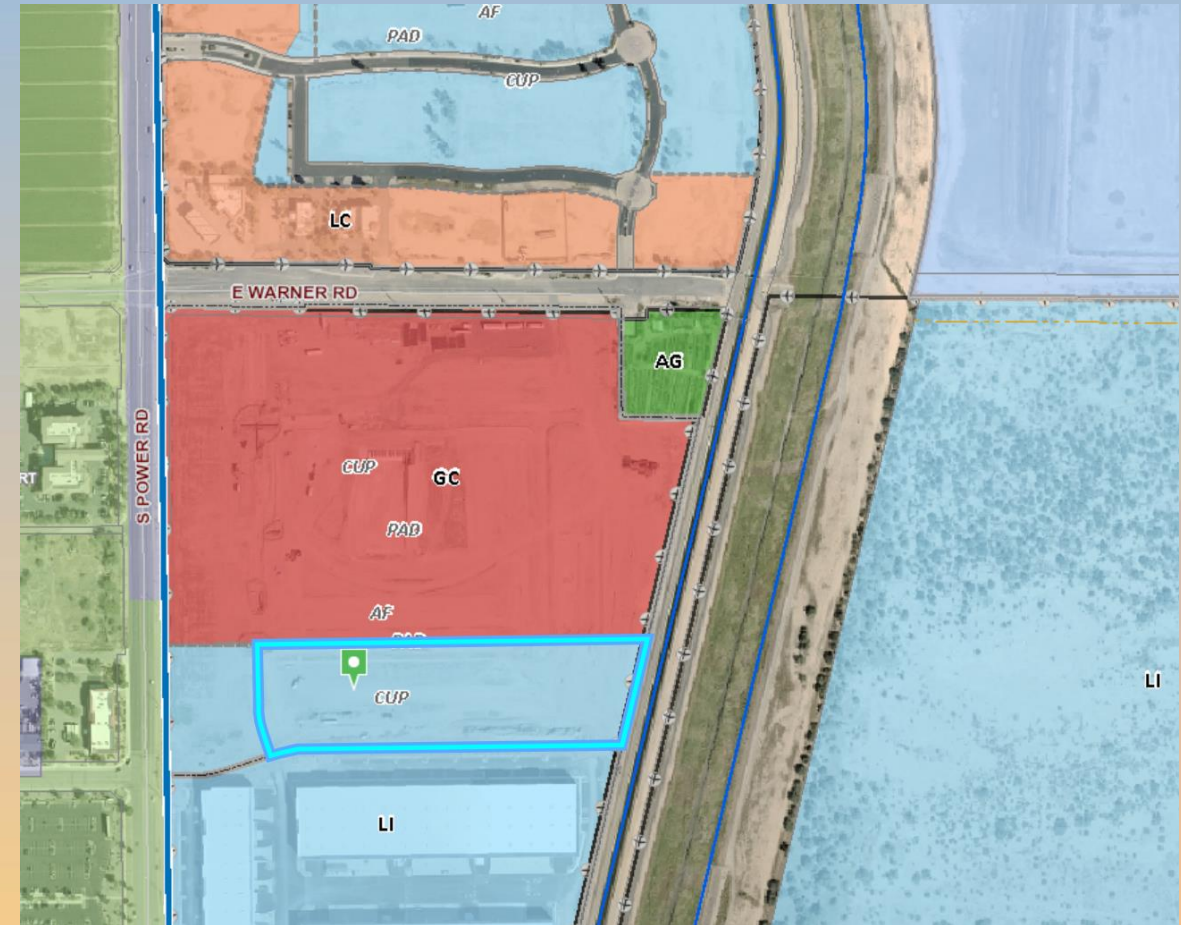






# Zoning

- Light Industrial with a Planned Area Development Overlay and Council Use Permit (LI-PAD-PAD-CUP)
- Use is permitted





# Site Photo



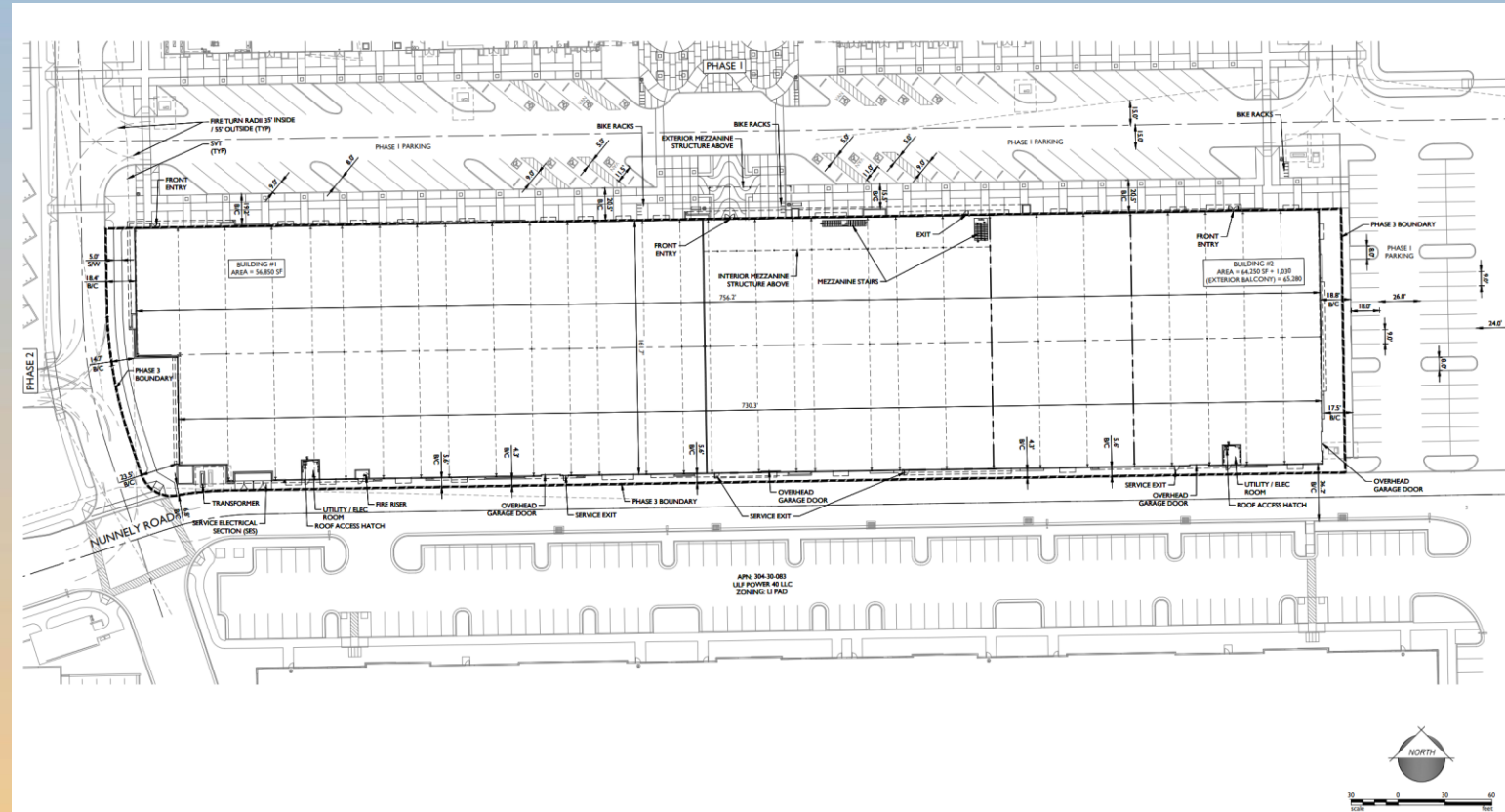
Looking east from Power Road





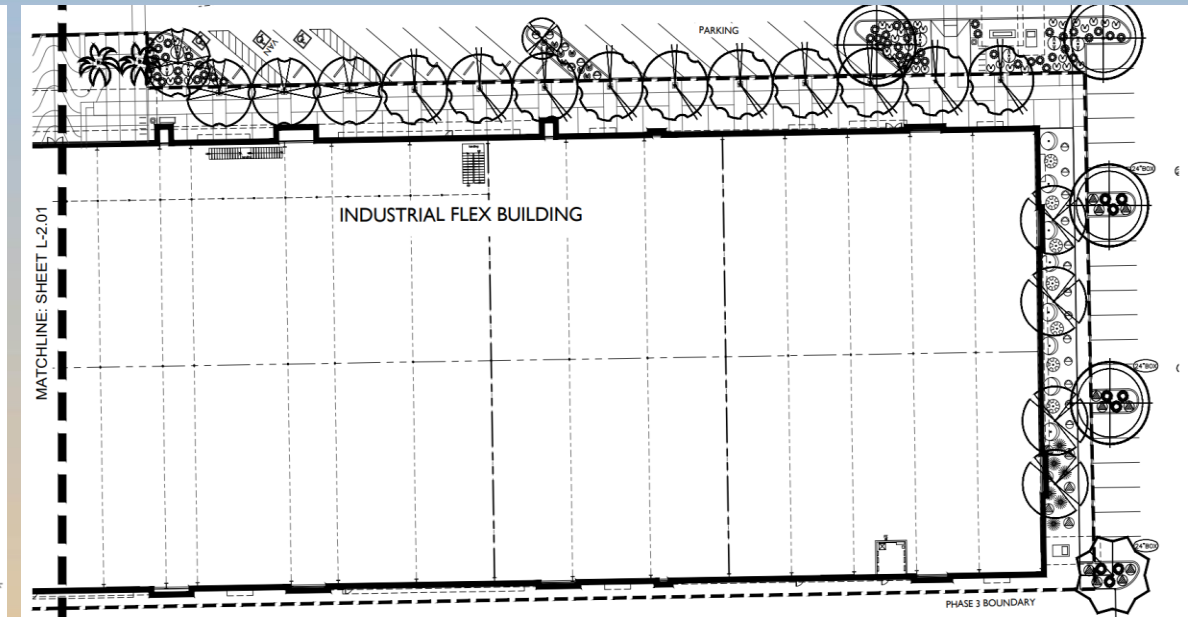
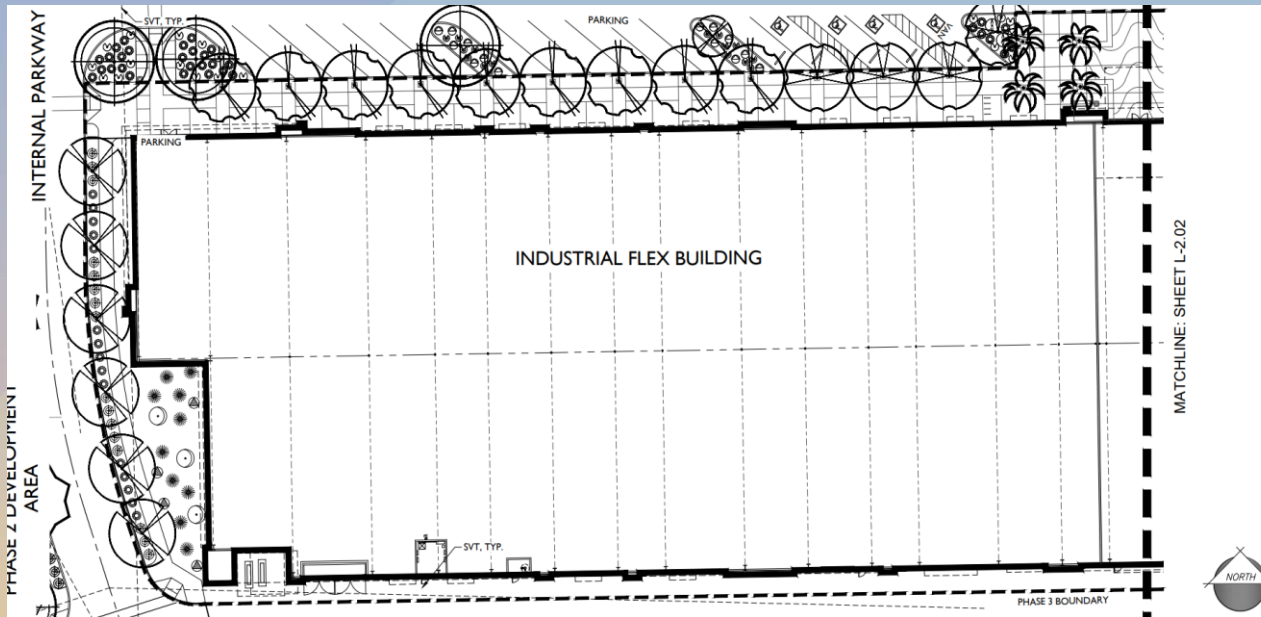
# Site Plan

- 120,000 sq. ft. building
- Primary entrance facing north (below mezzanine)
- Parking stalls to the north and east of the proposed building
- Entry plaza




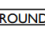






# Landscape Plan



## PLANT LEGEND

SYMBOL	SCIENTIFIC NAME	COMMON NAME	SIZE
<b>TREES</b>			
	<i>Acacia farnesiana</i>	Sweet Acacia	36" Box
<b>SHRUBS/ACCENTS</b>			
	<i>Leucophyllum langmaniae</i> 'Rio Bravo'	Rio Bravo Sage	5 Gal
	<i>Muhlenbergia capillaris</i> 'Regal Mist'	'Regal Mist' Muhly	5 Gal
	<i>Cassipouia pulcherrima</i>	Red Bird of Paradise	5 Gal
	<i>Muhlenbergia lindheimeri</i> 'Autumn Glow'	'Autumn Glow' Muhly	5 Gal
<b>GROUNDCOVERS</b>			
	<i>Eremophila prostrata</i> 'Outback Sunrise'	'Outback Sunrise'	1 Gal
	<i>Lantana x 'Dallas Red'</i>	Dallas Red Lantana	1 Gal
	<i>Lantana x 'New Gold'</i>	New Gold Lantana	1 Gal





# Elevations

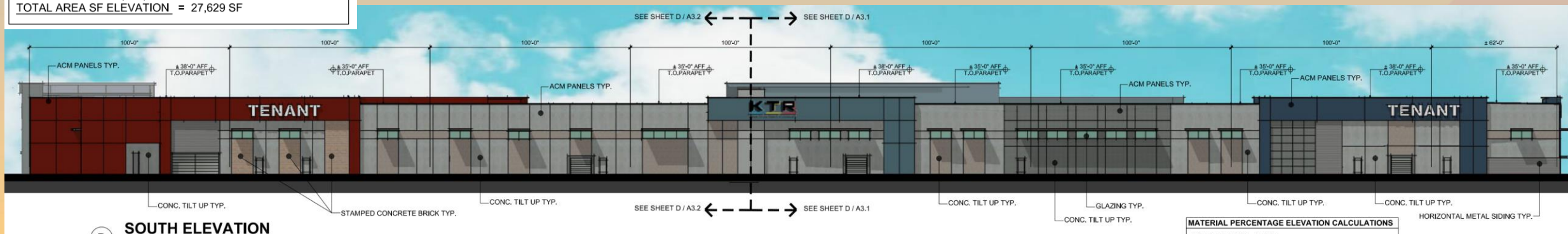
## MATERIAL PERCENTAGE ELEVATION CALCULATIONS

ACM = 13,143 SF (43 %)  
 CORRUGATED METAL SIDING = 542 SF (2 %)  
 CONC TILT = 10,850 SF (36 %)  
 CONC TILT 'BRICK STAMPED TEXTURE' = 2,786 SF (9 %)  
 GLAZING = 2,995 SF (10 %)  
**TOTAL AREA SF ELEVATION = 30,316 SF**



## MATERIAL PERCENTAGE ELEVATION CALCULATIONS

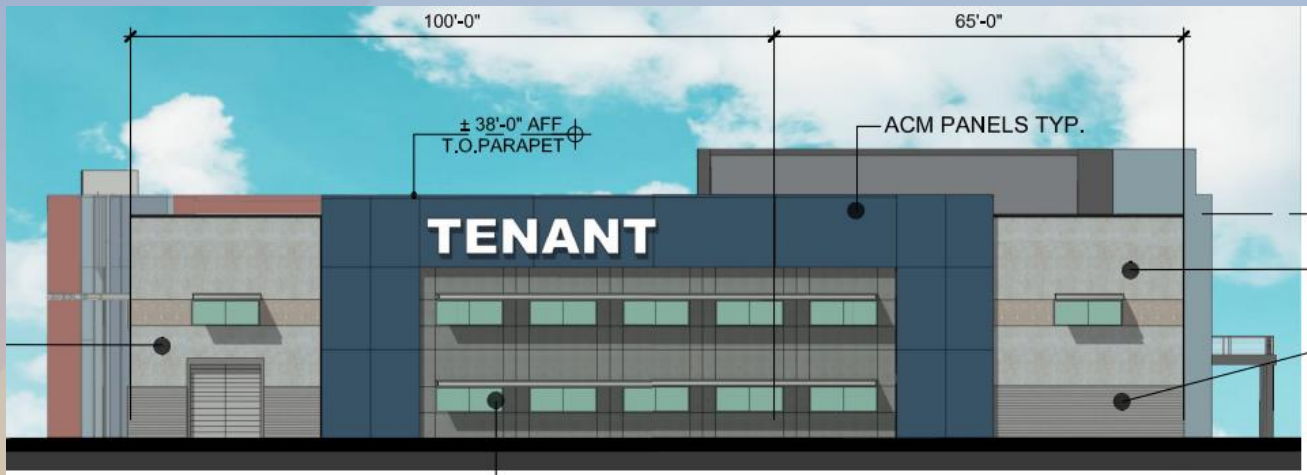
ACM = 10,742 SF (39 %)  
 CORRUGATED METAL SIDING = 1,039 SF (4 %)  
 CONC TILT = 14,400 SF (52 %)  
 CONC TILT 'BRICK STAMPED TEXTURE' = 688 SF (2 %)  
 GLAZING = 760 SF (3 %)  
**TOTAL AREA SF ELEVATION = 27,629 SF**



**MATERIAL PERCENTAGE ELEVATION CALCULATIONS**  
 (CONTINUED ON NEXT PAGE)

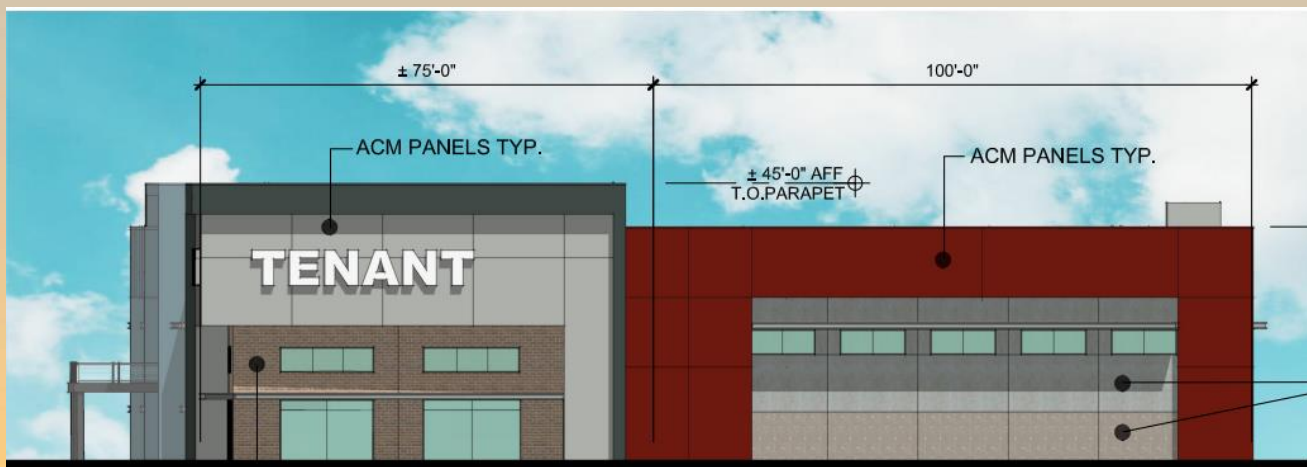


# Elevations



## MATERIAL PERCENTAGE ELEVATION CALCULATIONS

ACM = 2,026 SF (34 %)  
 CORRUGATED METAL SIDING = 395 SF (7 %)  
 CONC TILT = 3,083 SF (51 %)  
 GLAZING = 505 SF (8 %)  
TOTAL AREA SF ELEVATION = 6,009 SF



## MATERIAL PERCENTAGE ELEVATION CALCULATIONS

ACM = 3,758 SF (59 %)  
 CONC TILT 'BRICK STAMPED TEXTURE' = 860 SF (13 %)  
 CONC TILT = 1,495 SF (23 %)  
 GLAZING = 305 SF (5 %)  
TOTAL AREA SF ELEVATION = 6,418 SF





# Renderings



NORTHEAST CORNER VIEW OF BUILDING



NORTHWEST CORNER VIEW OF BUILDING



SOUTHWEST CORNER VIEW OF BUILDING



SOUTHEAST CORNER VIEW OF BUILDING





# Renderings



FRONTAGE ELEVATION



CLOSE-UP VIEW OF NORTHWEST CORNER SUITE

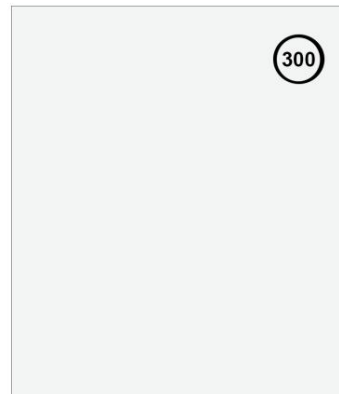


CLOSE-UP VIEW OF CENTRAL SUITE - KTR





# Colors and Materials



300

## SPECIFICATIONS:

**SKU:**

MAU999

**Material:**

.032 aluminum exterior skin

**Panel Size:**

48" x 96", 120", 144"

(Custom sizes available)

**Texture:**

Smooth or Embossed

**Finish:**

Kynar 500® PVDF or Hylar

5000® PVDF

**Colors:**

Choice of over 30 stock colors

**STERRACORE Metal Composite Panels**

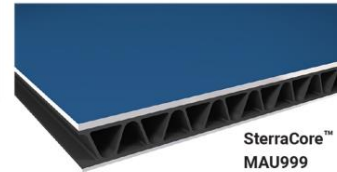
Manufacturer: ATAS International, Inc.

Texture: Smooth

Colors: Redwood (07), Slate Blue (21), Regal Blue (18),

Ascot White (10)

Application: Popout Walls, see exterior elevations for colors and locations.

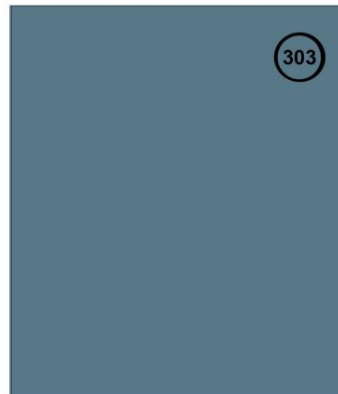


STERRACORE Metal Composite Panels  
Application: Popout features. See exterior elevations for locations.  
Manufacturer: ATAS International, Inc.  
Color: Ascot White (10)



302

STERRACORE Metal Composite Panels  
Application: Popout features. See exterior elevations for locations.  
Manufacturer: ATAS International, Inc.  
Color: Redwood (07)



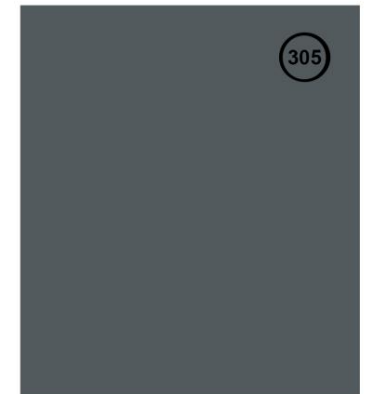
303

STERRACORE Metal Composite Panels  
Application: Popout features. See exterior elevations for locations.  
Manufacturer: ATAS International, Inc.  
Color: Slate Blue (21)



304

STERRACORE Metal Composite Panels  
Application: Popout features. See exterior elevations for locations.  
Manufacturer: ATAS International, Inc.  
Color: Regal Blue (18)



305

STERRACORE Metal Composite Panels  
Application: Popout features. See exterior elevations for locations.  
Manufacturer: ATAS International, Inc.  
Color: Charcoal Grey (62)



310

12" deep powder coated steel frame canopy attached to building walls, see exterior elevations for locations.  
Paint Color: Dunn Edwards:  
"December Sky" - DE6352



311

Concrete Tilt-Up Panels - (stamped brick)  
Brick form liner application.  
Manufacturer: Spec Form Liners  
Pattern: Standard Spec Smooth Brick #1303  
Paint Color: Dunn Edwards:  
"Colorado Trail" - DE6117  
Location: See exterior elevations for locations



312

Concrete Tilt-Up Panels  
Texture: Smooth  
Paint Color: Dunn Edwards:  
"Ice Gray" - DEC 790  
Application: Main Exterior Walls -  
See exterior elevations for locations



313

Concrete Tilt-Up Panels  
Texture: Smooth  
Paint Color: Dunn Edwards:  
"Formal Gray" - DE6382  
Application: Accent Exterior Walls -  
See exterior elevations for locations



314

Concrete Tilt-Up Panels  
Texture: Smooth  
Paint Color: Dunn Edwards:  
"Crushed Stone" - DE6067  
Application: Accent Exterior Walls -  
See exterior elevations for locations



315

Metafor

Horizontal Corrugated Metal Siding  
Manufacturer: ATAS International, Inc.  
Texture: Smooth  
Color: Titanium (35)  
Application: Accent walls at windows  
See exterior elevations for locations



# Findings

Staff is seeking your review and recommendation on the following:

- ✓ Proposed building and landscape architecture

*Staff welcomes any feedback*





# Design Review Board