



Design Review Board



DRB22-01218



Request

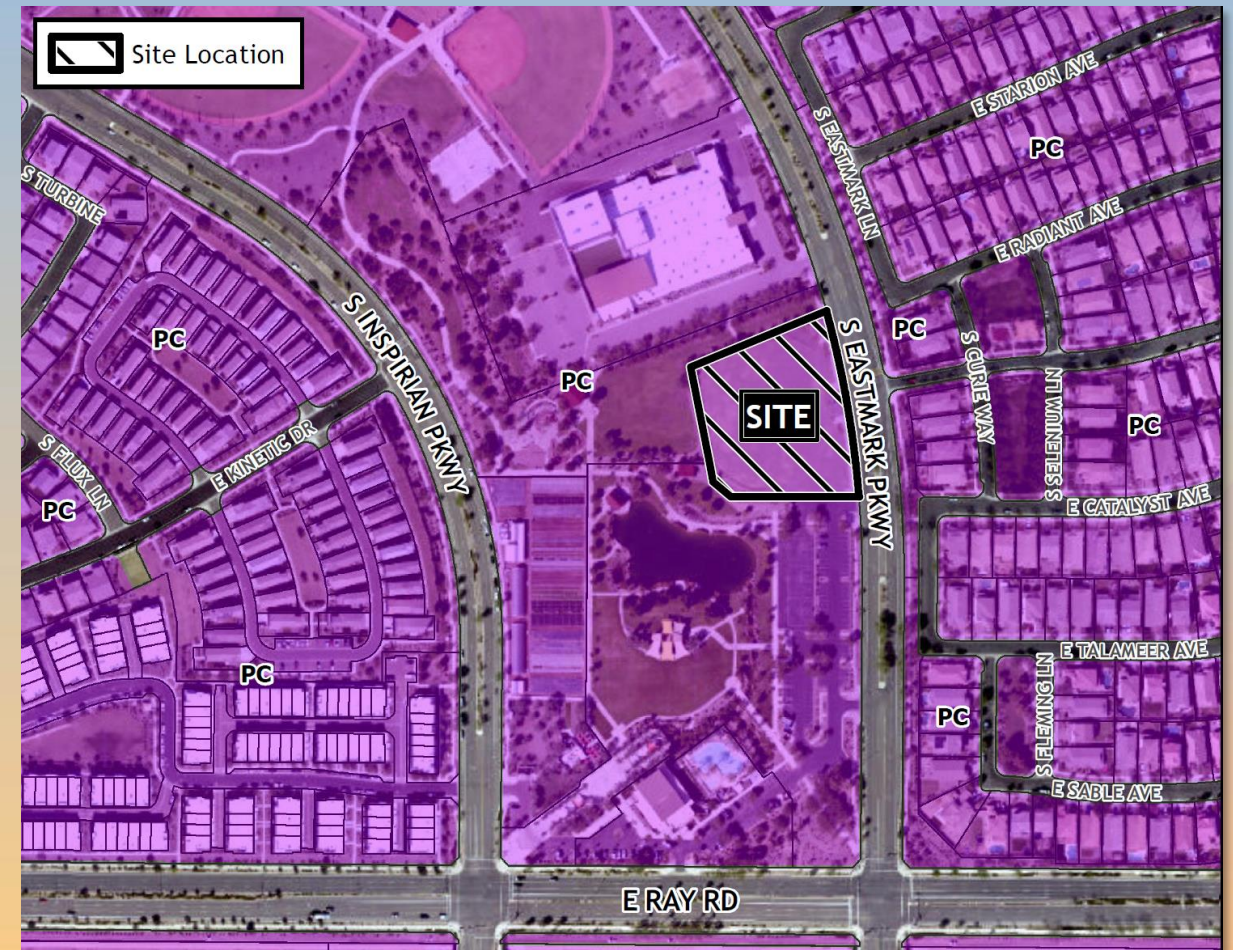
- Design Review
- To allow a public library





Location

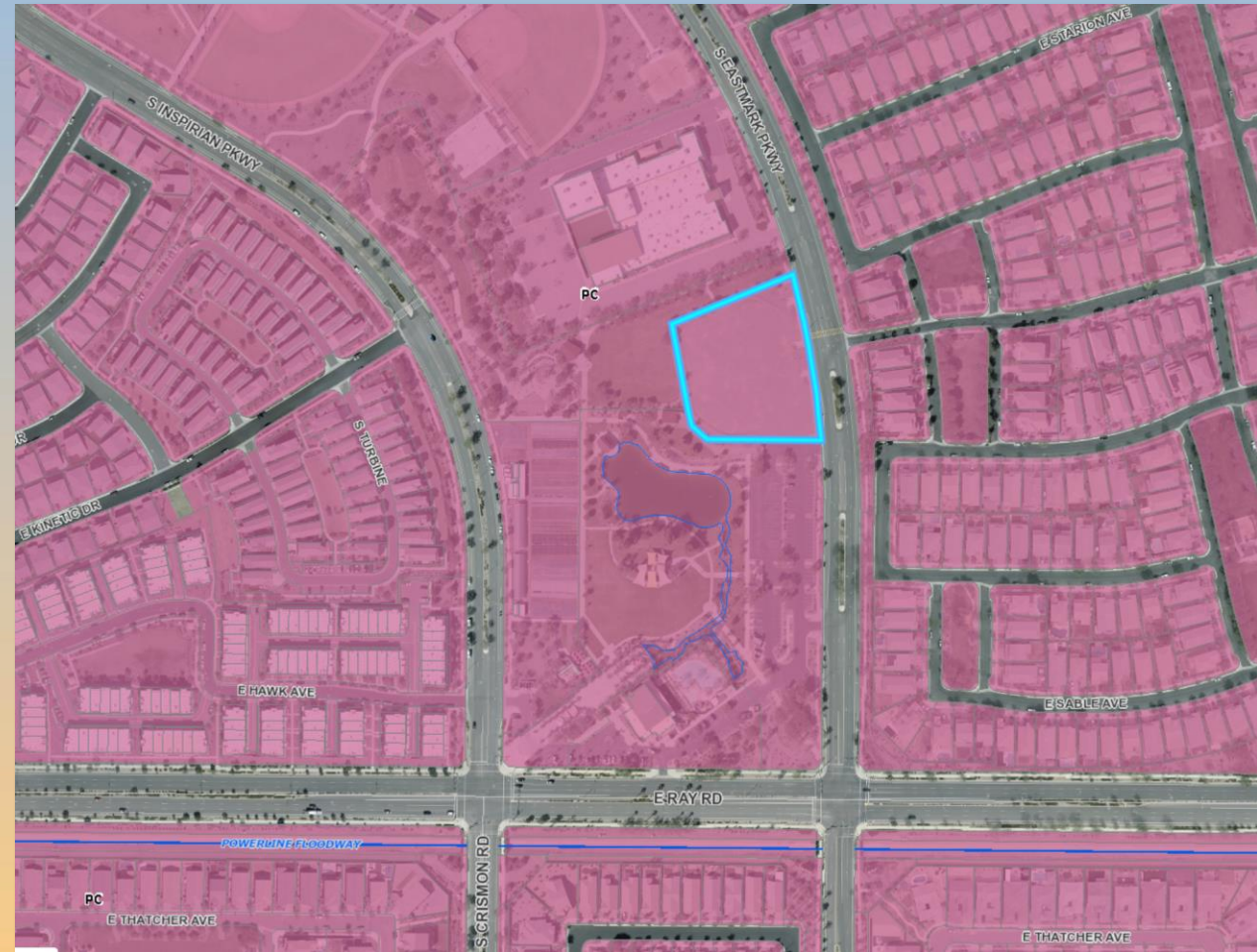
- North of Ray Road
- East of Crismon Road
- West side of Eastmark Pkwy
- Within the Great Park





Zoning

- Planned Community (PC)
- Development Unit 7 in Eastmark
- Civic Space Land Use Group





Site Photos



Looking southwest from Eastmark Parkway



Site Photos



Looking northwest from Eastmark Parkway



Site Plan

- 28,250 sf building
- 3 main entrances
- Patios
- Employee parking lot
- Public parking plaza





Site Plan

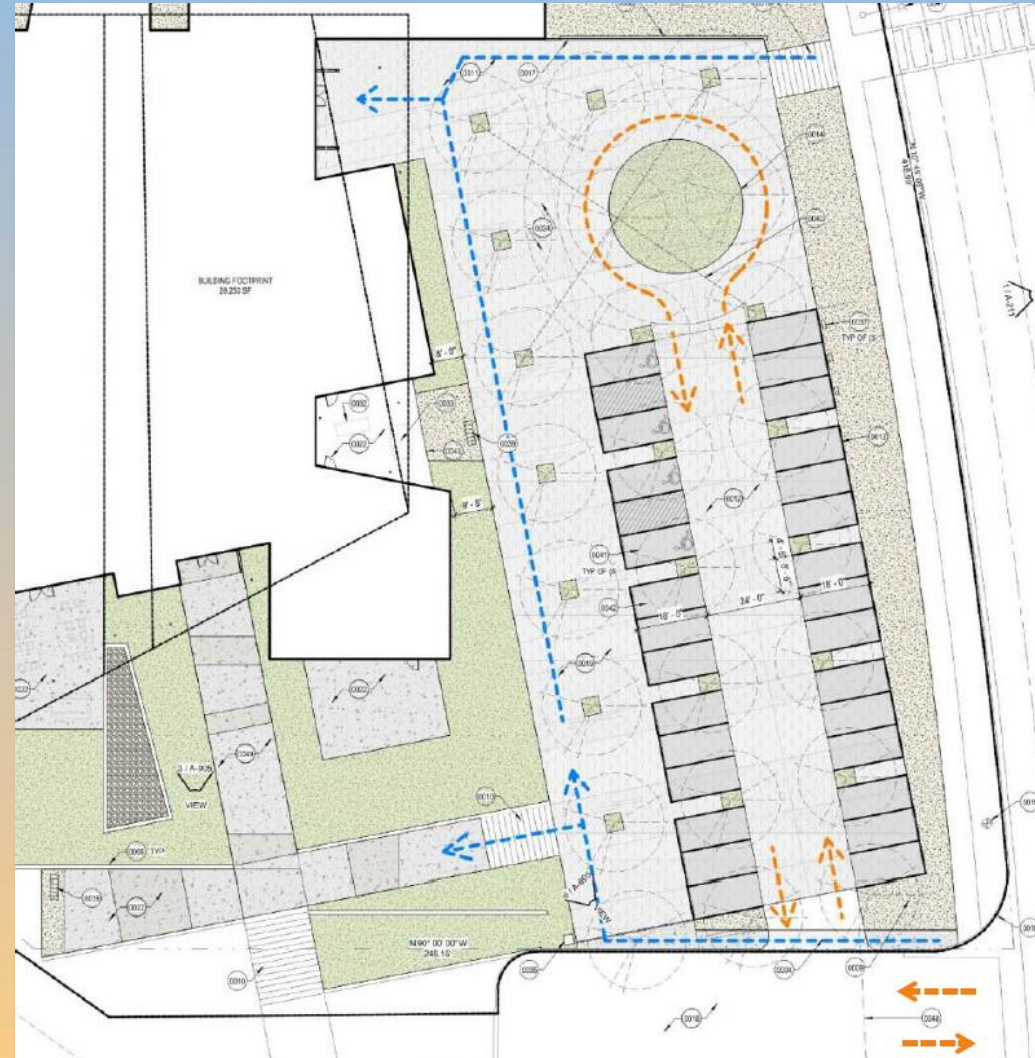
- Employee parking lot





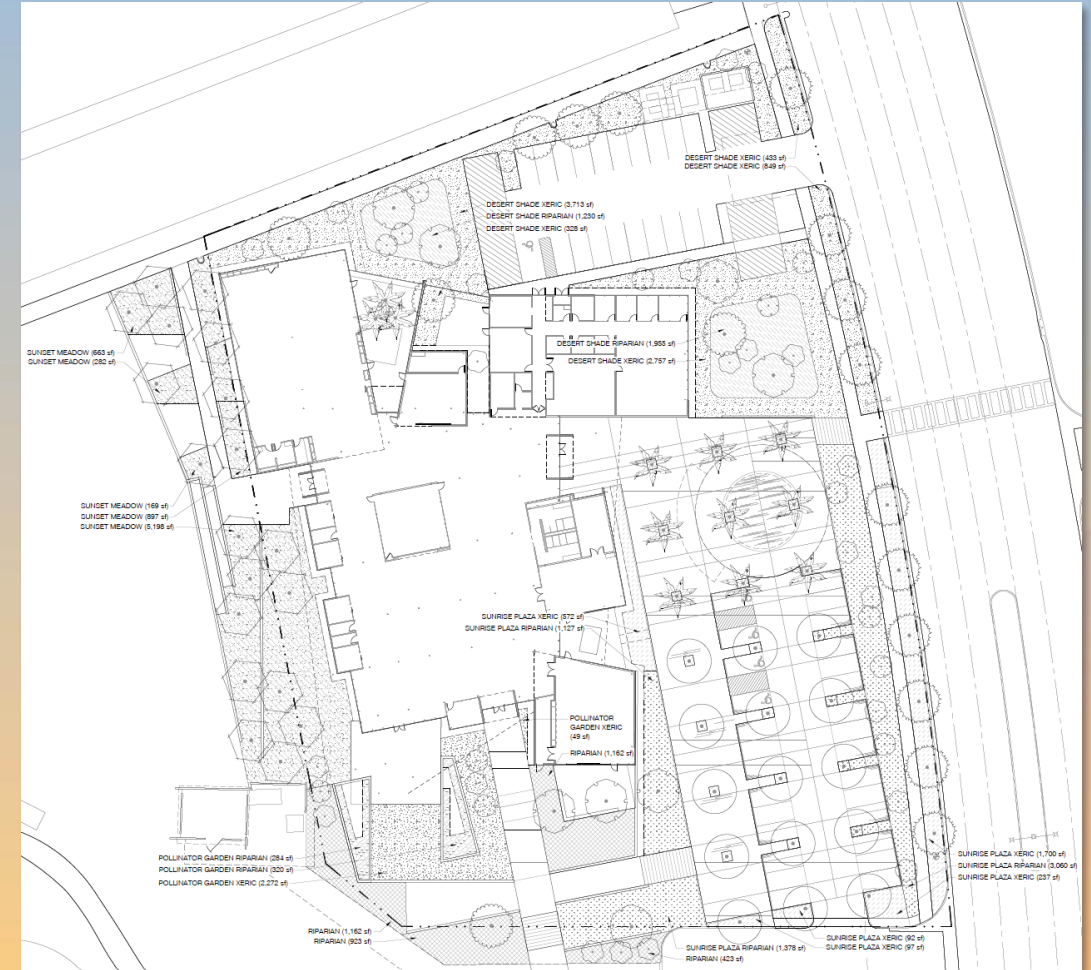
Site Plan

- Parking plaza



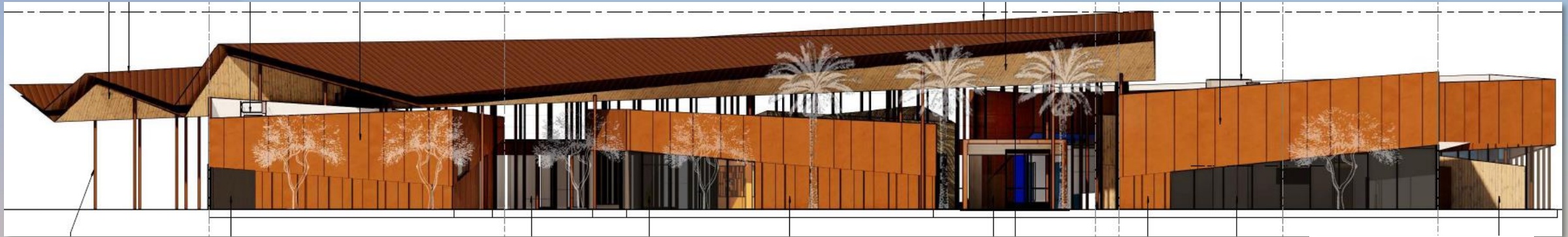


Landscape Plan





Elevations



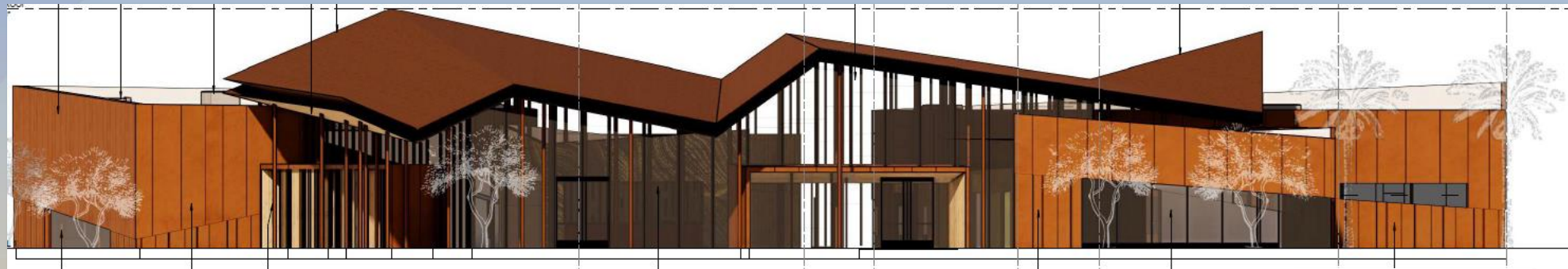
EAST - OVERALL



WEST - OVERALL



Elevations



SOUTH - OVERALL



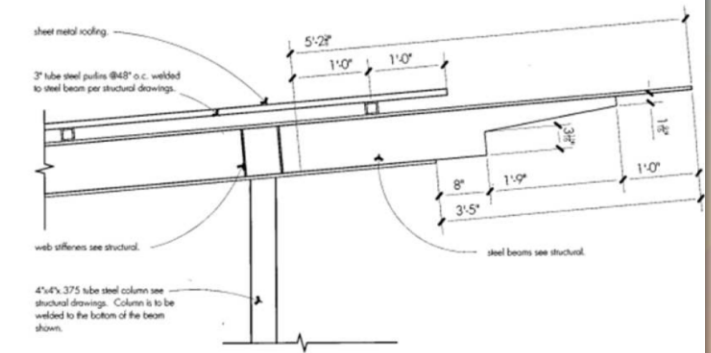
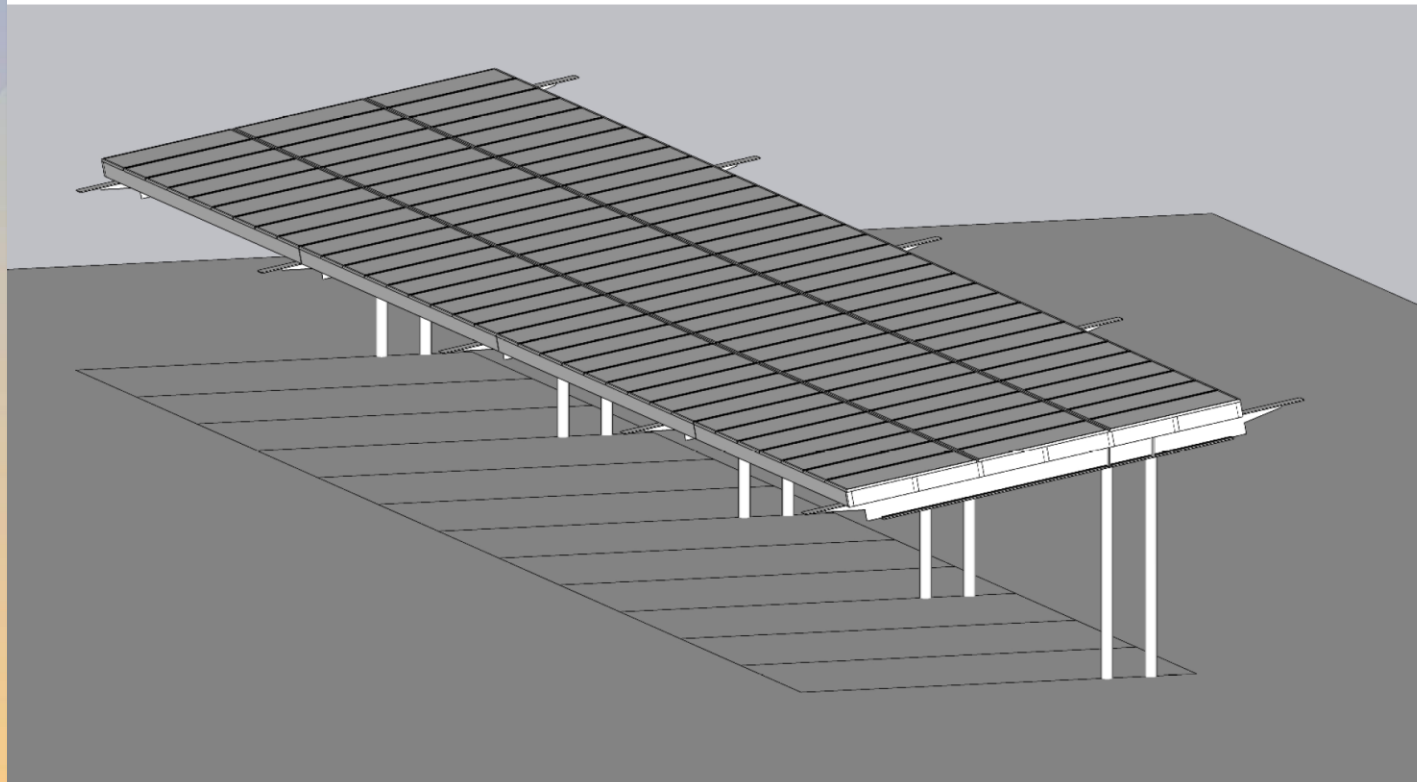
NORTH - OVERALL



Canopy Elevations

PV canopy axon

- beam details match existing "Great Park" structures to integrate the Library to the greater park context.



■ steel beam at steel column and plate
1" = 1'-0" detail **14**

*Detail by Tate Studio Architects



Perspective from East





Perspective from South





Perspective from West





Perspective from North





View of Staff Parking Lot from Eastmark Pkwy





Staff Parking Lot with Canopy





Main Entry





South Entry





Reading Patio





Southeast Approach



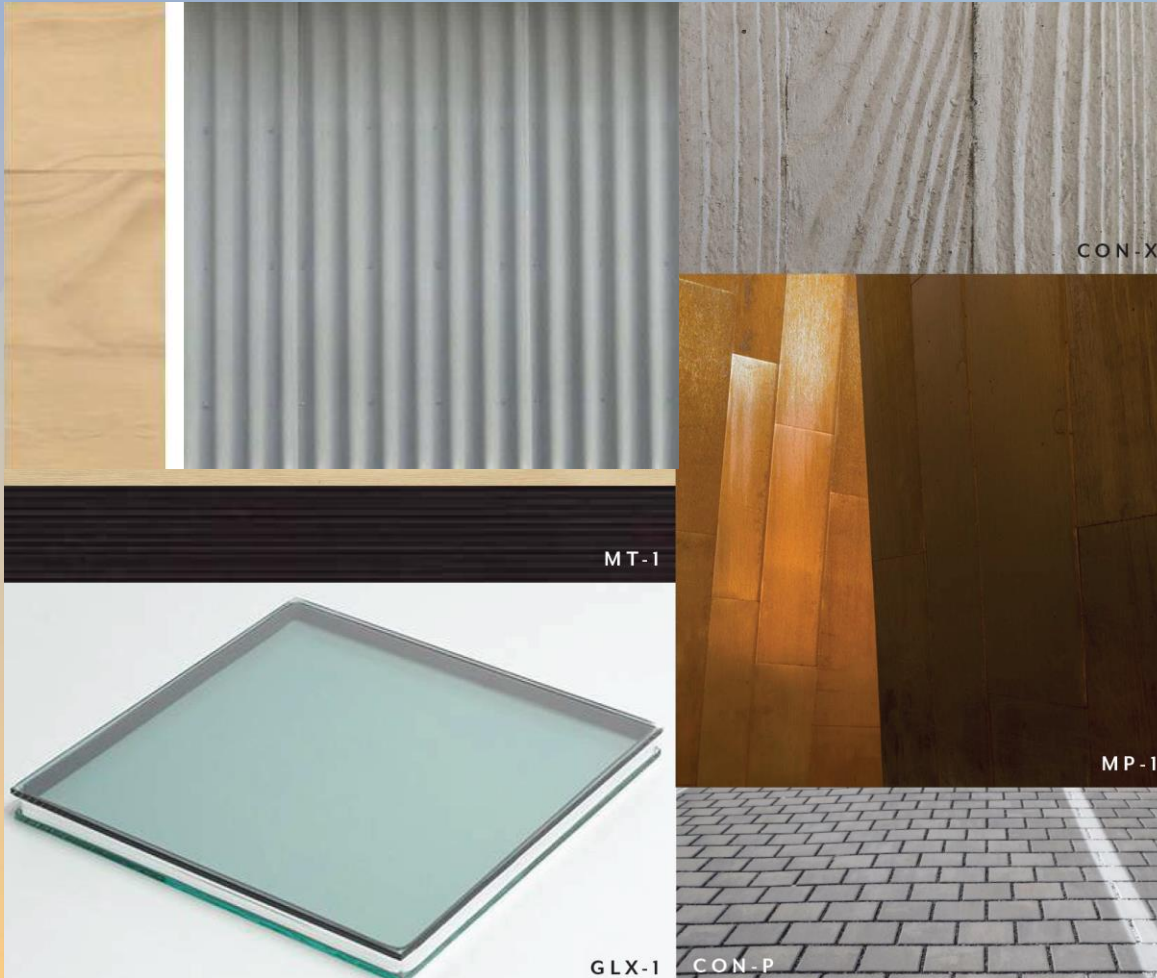


Thinkspot Patio





Colors and Materials



Glass 39%

Corrugated Fiber Cement 9%

Weathering Steel 49%

Modified Wood 3%



Findings

- ✓ Complies with the 2040 Mesa General Plan
- ✓ Complies with Eastmark Community Plan
- ✓ Complies with Development Unit Plan 7

Staff recommends Approval with Conditions



Design Review Board