

staff parking lot PV canopy from Eastmark Pkwy



staff parking lot PV canopy



PV canopy elevation



staff parking lot PV canopy



LINE OF SIGHT STUDY: as seen from well beyond the site boundaries, roof equipment is not visible

View from lake



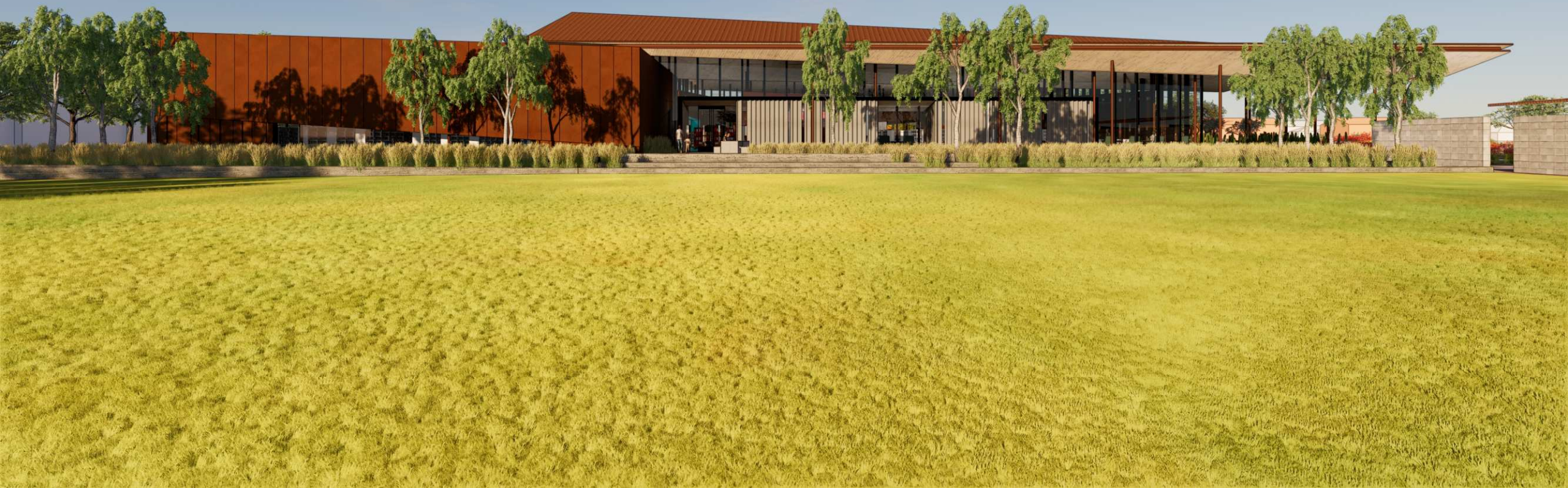
east perspective elevation



south perspective elevation



west perspective elevation



north perspective elevation



general notes

1. RENDERED VIEWS ARE FOR REFERENCE ONLY. SEE TECHNICAL DRAWINGS FOR ADDITIONAL INFORMATION & MATERIAL DESIGNATIONS

descriptive notes

- 0008 CAST-IN-PLACE BOARD FORMED SITE WALL
- 0010 LANDSCAPE PEDESTRIAN BRIDGE ELEMENT - SEE LANDSCAPE
- 0011 ENTRY PLAZA - PERVIOUS PAVERS WITH INTEGRAL COLOR PLAZA FOR PATRON DROP-OFF AND PICK-UP. CENTER OF TURNAROUND INCLUDES A RAISED LANDSCAPE ELEMENT TO DEFINE VEHICLE PATHWAY
- 0022 EXPOSED AGGREGATE WITH INTEGRAL COLOR CONCRETE PATIO
- 0039 BIKE RACK - BLACK POWDERCOAT FINISH - BURIED ATTACHMENT TO SONOTUBE FOOTING - DECOMPOSED GRANITE PAD
- 0040 OUTDOOR POLE-MOUNTED CATERNARY LIGHTING - SEE LIGHTING
- 1002 STRUCTURAL COLUMN SUPPORTING HIGH ROOF ABOVE - TYP - CIRCULAR SAWCUT RING IN FLOOR AROUND BASE CENTERED ON COLUMN
- 1005 ALL-GLASS AUTOMATED PIVOT DOORS IN WINDOW WALL SYSTEM
- 1006 SLIDING GLASS OPERABLE WALL OPENING - (S) DOORS AT 5'-0" EA FOR 20' OPENING
- 2002 WOOD PLANK SOFFIT (WPS-X)
- 4002 EXTERIOR FORMED METAL WALL - 16 GA MILL-FINISH STEEL PANELS
- 4003 VERTICAL WOOD PLANK SIDING WALL - ACETYLATED PINE WOOD IN WITH NATURALLY WEATHERED TEXTURE
- 4006 CURTAIN WALL (BASIS OF DESIGN ARCADIA QPG-3000) - CAPTURED VERTICAL MULLIONS AND SILICONE SEALANT GLAZED-HORIZONTAL MULLIONS (INCLUDING HEAD AND SILL) - HEAD EXTENDS ABOVE SUSPENDED WOOD PANEL SOFFIT TO UNDERSIDE OF STRUCTURE ABOVE. 1" INSULATED GLAZING UNITS (IGLARBAN 80) AND DARK BRONZE ANODIZED (W) METAL FINISH
- 4016 EXTERIOR BUILDING SIGNAGE (LIBRARY NAME SHOWN AS PLACEHOLDER - TO BE VERIFIED BY OWNER IN SUBSEQUENT PROJECT PHASE) - SEE SEPARATE SIGNAGE PACKAGE



2 RENDERING MAIN ENTRY
A-111/A-909 NTS



1 RENDERING WEST ENTRY
A-111/A-909 NTS



4 RENDERING READING PATIO
A-101/A-909 NTS



3 RENDERING SOUTH ENTRY
A-101/A-909 NTS



6 RENDERING SOUTHEAST APPROACH
A-101/A-909 NTS



5 RENDERING THINKSPOT PATIO
A-111/A-909 NTS

revisions schedule

rev #	description	date

4450 NORTH 12TH STREET
SUITE TWO HUNDRED
PHOENIX, AZ 85014 USA
602.264.1955 RKARCH.COM

**RICHÄRD
KENNEDY**
ARCHITECTS

SOUTEAST MESA LIBRARY
MESA PUBLIC LIBRARY
DESIGN REVIEW | 11/18/2022
CP0428

A-905
RENDERINGS