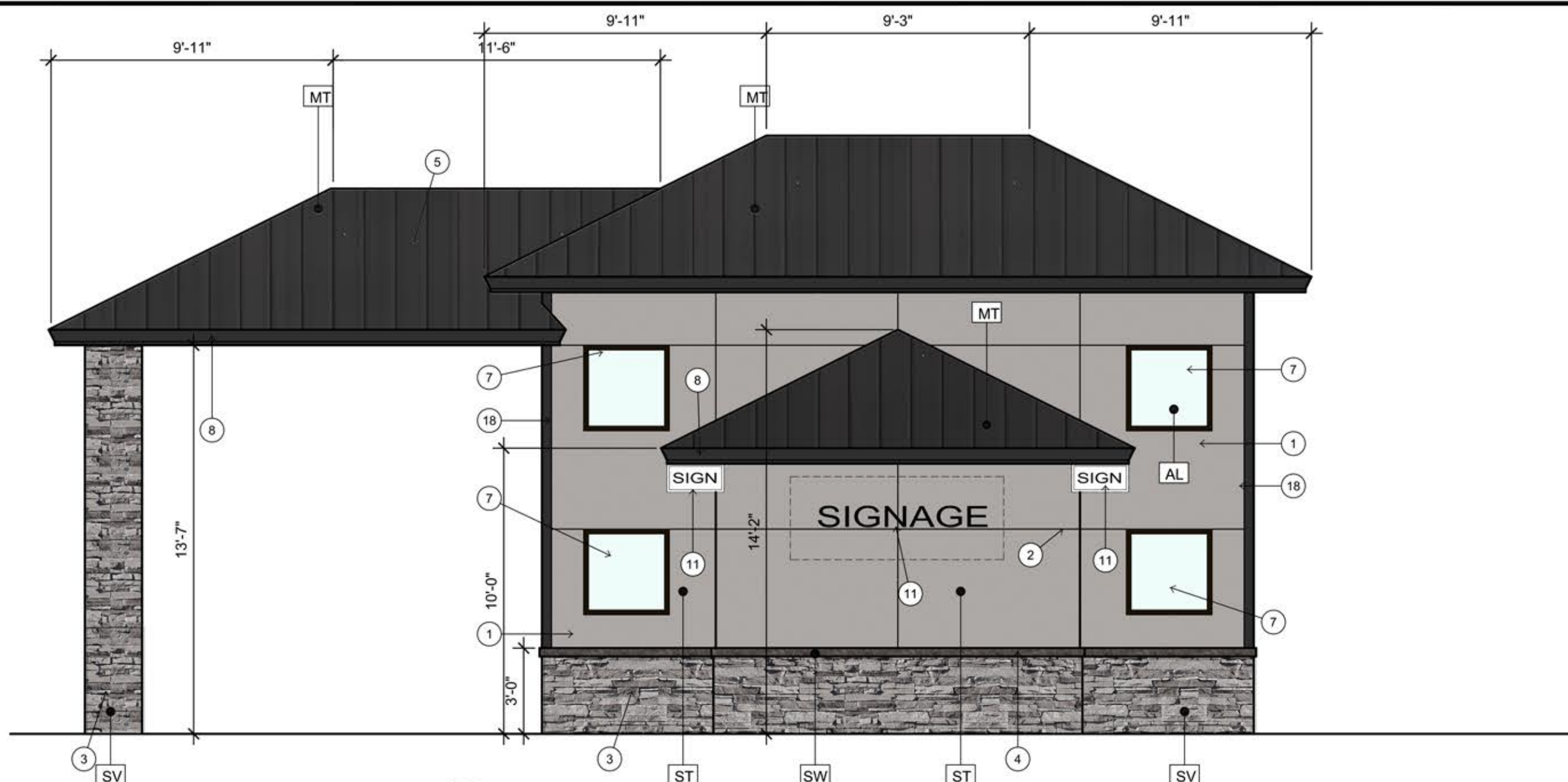


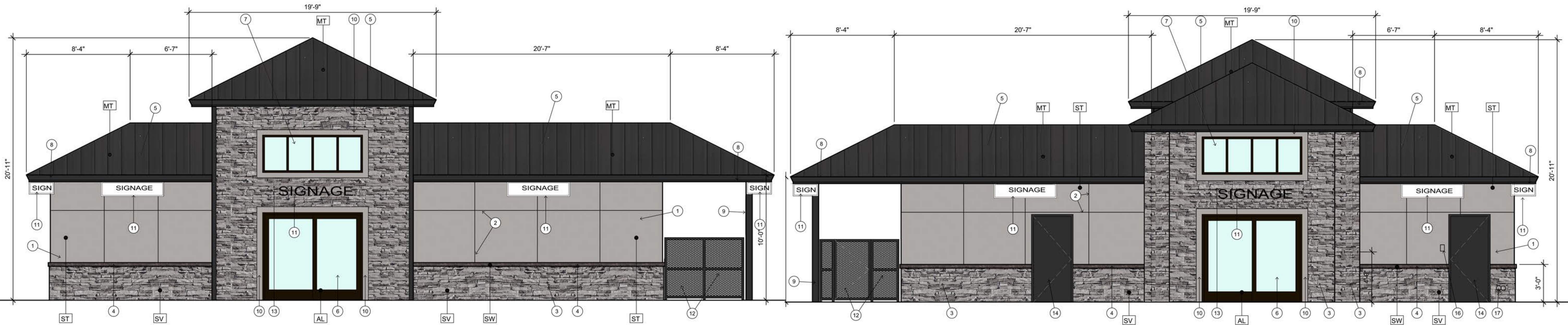
ELEVATION NOTES

1. ROOF DRAINAGE IS SHEET FLOW OFF OF ROOF WITH NO GUTTERS OR DOWNSPOUTS
2. MECHANICAL EQUIPMENT IS SCREENED IN MECHANICAL YARD WITH PERFORATED METAL
3. SIGNAGE IS UNDER SEPARATE REVIEW AND PERMIT.
4. THERE ARE NO WALL MOUNTED LIGHT FIXTURES. ALL LIGHTING WILL BE MOUNTED IN THE SOFFITS.



1 WEST ELEVATION

SCALE: 1/4" = 1'-0"



2 SOUTH ELEVATION

SCALE: 1/4" = 1'-0"

3 NORTH ELEVATION

SCALE: 1/4" = 1'-0"

WEST ELEVATION

FACADE MATERIALS	SQUARE FOOTAGE	% AREA
STUCCO:	310 SF	47.47%
STONE:	90 SF	13.78%
GLASS/WINDOWS:	36 SF	5.51%
STANDING SEAM METAL ROOFING:	217 SF	33.24%
TOTAL FACADE	653 SF	100%

SOUTH ELEVATION

FACADE MATERIALS	SQUARE FOOTAGE	% AREA
STUCCO:	212 SF	26.80%
STONE:	238 SF	30.09%
GLASS/WINDOWS/DOORS:	80 SF	10.12%
STANDING SEAM METAL ROOFING:	261 SF	32.99%
TOTAL FACADE	791 SF	100%

NORTH ELEVATION

FACADE MATERIALS	SQUARE FOOTAGE	% AREA
STUCCO:	186 SF	23.51%
STONE:	217 SF	27.43%
GLASS/WINDOWS/DOORS:	127 SF	16.07%
STANDING SEAM METAL ROOFING:	261 SF	32.99%
TOTAL FACADE	791 SF	100%

EAST ELEVATION

FACADE MATERIALS	SQUARE FOOTAGE	% AREA
STUCCO:	310 SF	47.47%
STONE:	90 SF	13.78%
GLASS/WINDOWS:	36 SF	5.51%
STANDING SEAM METAL ROOFING:	217 SF	33.24%
TOTAL FACADE	653 SF	100%

5 FACADE MATERIAL CALCULATIONS

MATERIAL SPECIFICATIONS

STUCCO:	MANUFACTURER	WESTERN 1-KOTE
ST	TYPE	FIBER REINFORCED PORTLAND CEMENT EXTERIOR PLASTER
	FINISH	PREMIUM ACRYLIC FINISH
	COLOR	INTEGRAL COLOR - PROPER GRAY SW6003
		INSTALL PER ICC-ES AC11, ER 382
STONE VENEER:	MANUFACTURER	EL DORADO STONE
SV	TYPE	STACKED STONE
	COLOR	SILVER LINING
		PROVIDE 2 COATS MAPEI "ULTRACARE" ENHANCING SEALANT
		INSTALL PER ICC-ES EVALUATION REPORT ESR-1215
STONE WAINSCOT:	MANUFACTURER	EL DORADO STONE
SW	TYPE	STACKED STONE
	CAP	SNAPPED EDGE WAINSCOT CAP
	COLOR	PEWTER
		PROVIDE 2 COATS MAPEI "ULTRACARE" ENHANCING SEALANT
ROOFING:	MANUFACTURER	STANDING SEAM METAL ROOFING
MT		PAC-CLAD, SNAP-CLAD 16" COVERAGE OR EQUAL
		COLOR: BLACK FINISH
ALUMINUM STOREFRONT:	MANUFACTURER	DARK BRONZE ANODIZED ALUMINUM FINISH
AL		
GLAZING:	SOLARBAN 70XL	
	SHGC: 0.27, U-VALUE: 0.24, VLT 64%	



ARCHICON
Architecture & Interiors, L.C.

5055 E WASHINGTON STREET
SUITE 200
PHOENIX, ARIZONA 85034
(602) 222-4266
FAX (602) 279-4305
www.ARCHICON.COM

GRAVITY ENERGY DRINKS
16 W MCKELLIPS
N.E.C. W. MCKELLIPS RD & N. CENTER ST
MESA, ARIZONA 85201



PROJECT NUMBER: 2284400-03
PROJECT MANAGER: DEBBIE S.
DRAWN BY: DEBBIE S.
CHECKED BY: JEFF K

NO	REVISION	DATE

SHEET DESCRIPTION

EXTERIOR ELEVATIONS



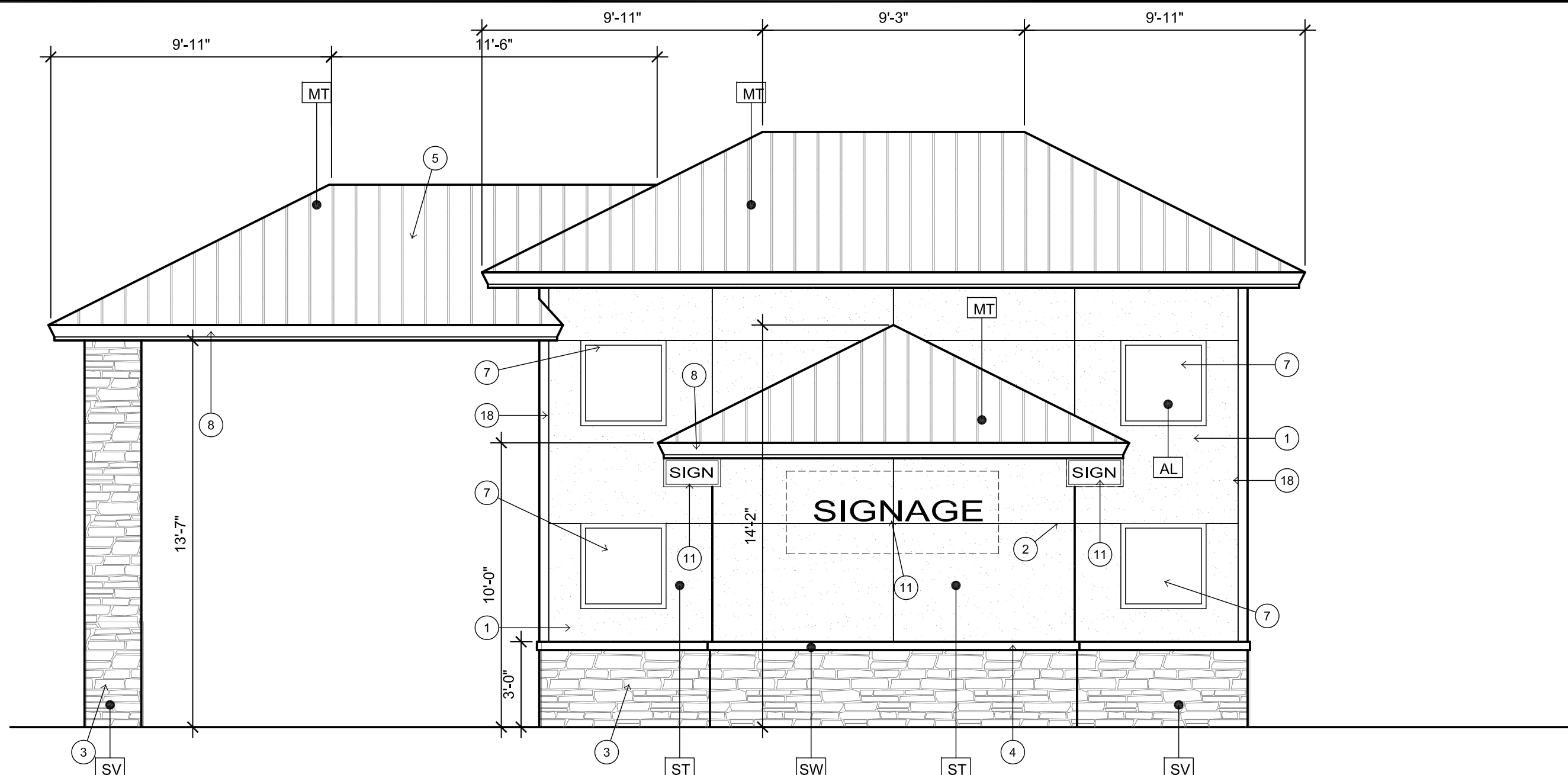
SHEET NO.

DR300

ISSUE DATE: 5 DEC 2022

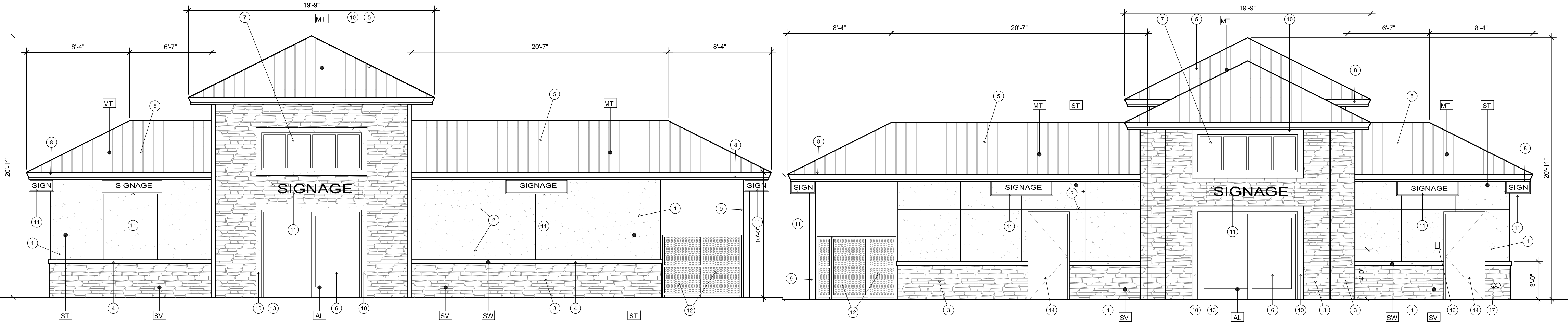
ELEVATION NOTES

1. ROOF DRAINAGE IS SHEET FLOW OFF OF ROOF WITH NO GUTTERS OR DOWNSPOUTS
2. MECHANICAL EQUIPMENT IS SCREENED IN MECHANICAL YARD WITH PERFORATED METAL
3. SIGNAGE IS UNDER SEPARATE REVIEW AND PERMIT.
4. THERE ARE NO WALL MOUNTED LIGHT FIXTURES. ALL LIGHTING WILL BE MOUNTED IN THE SOFFITS.



1 WEST ELEVATION

SCALE: 1/4" = 1'-0"



2 SOUTH ELEVATION

SCALE: 1/4" = 1'-0"

3 NORTH ELEVATION

SCALE: 1/4" = 1'-0"

WEST ELEVATION

FACADE MATERIALS	SQUARE FOOTAGE	% AREA
STUCCO:	310 SF	47.47%
STONE:	90 SF	13.78%
GLASS/WINDOWS:	36 SF	5.51%
STANDING SEAM METAL ROOFING:	217 SF	33.24%
TOTAL FACADE	653 SF	100%

SOUTH ELEVATION

FACADE MATERIALS	SQUARE FOOTAGE	% AREA
STUCCO:	212 SF	26.80%
STONE:	238 SF	30.09%
GLASS/WINDOWS/DOORS:	80 SF	10.12%
STANDING SEAM METAL ROOFING:	261 SF	32.99%
TOTAL FACADE	791 SF	100%

NORTH ELEVATION

FACADE MATERIALS	SQUARE FOOTAGE	% AREA
STUCCO:	196 SF	23.51%
STONE:	217 SF	27.43%
GLASS/WINDOWS/DOORS:	127 SF	16.07%
STANDING SEAM METAL ROOFING:	261 SF	32.99%
TOTAL FACADE	791 SF	100%

EAST ELEVATION

FACADE MATERIALS	SQUARE FOOTAGE	% AREA
STUCCO:	310 SF	47.47%
STONE:	90 SF	13.78%
GLASS/WINDOWS:	36 SF	5.51%
STANDING SEAM METAL ROOFING:	217 SF	33.24%
TOTAL FACADE	653 SF	100%

5 FACADE MATERIAL CALCULATIONS

MATERIAL SPECIFICATIONS

STUCCO:	MANUFACTURER	WESTERN 1-KOTE
ST	TYPE	FIBER REINFORCED PORTLAND CEMENT EXTERIOR PLASTER
	FINISH	PREMIUM ACRYLIC FINISH
	COLOR	INTEGRAL COLOR - PROPER GRAY SW6003
		INSTALL PER ICC-ES AC11, ER 382
STONE VENEER:	MANUFACTURER	EL DORADO STONE
SV	TYPE	STACKED STONE
	COLOR	SILVER LINING
		PROVIDE 2 COATS MAPEI "ULTRACARE" ENHANCING SEALANT
		INSTALL PER ICC-ES EVALUATION REPORT ESR-1215
STONE WAINSCOT:	MANUFACTURER	EL DORADO STONE
SW	TYPE	STACKED STONE
	CAP	SNAPPED EDGE WAINSCOT CAP
	COLOR	PEWTER
		PROVIDE 2 COATS MAPEI "ULTRACARE" ENHANCING SEALANT
ROOFING:	MANUFACTURER	EL DORADO STONE
MT	TYPE	STANDING SEAM METAL ROOFING
		PAC-CLAD, SNAP-CLAD 16" COVERAGE OR EQUAL
		COLOR: BLACK FINISH
ALUMINUM STOREFRONT:	MANUFACTURER	EL DORADO STONE
AL		DARK BRONZE ANODIZED ALUMINUM FINISH
	GLAZING:	SOLARBAN 70XL
		SHGC: 0.27, U-VALUE: 0.24, VLT 64%

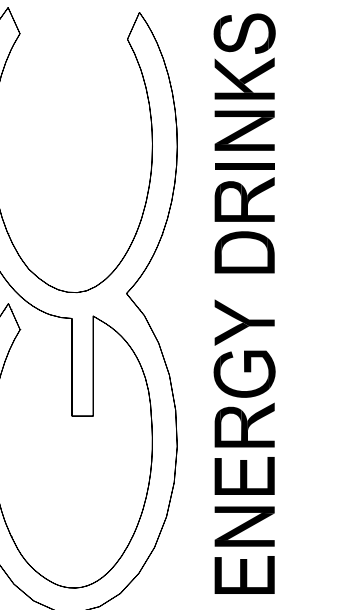


ARCHICON

Architecture & Interiors, L.C.

5055 E WASHINGTON STREET
SUITE 200
PHOENIX, ARIZONA 85034
(602) 222-4266
FAX (602) 279-4305
www.ARCHICON.COM

GRAVITY ENERGY DRINKS
16 W MCKELLIPS
N.E.C. W. MCKELLIPS RD & N. CENTER ST
MESA, ARIZONA 85201



PROJECT NUMBER: 2284400-03
PROJECT MANAGER: DEBBIE S.
DRAWN BY: DEBBIE S.
CHECKED BY: JEFF K

KEYNOTES

1. STUCCO WITH SYNTHETIC FINISH AND INTEGRAL COLOR
2. STUCCO JOINT (TYP)
3. STONE VENEER
4. STONE WAINSCOT CAP (SNAPPED EDGE)
5. STANDING SEAM BLACK METAL ROOFING
6. ALUMINUM SLIDING GLASS WINDOW WITH INSULATED GLAZING
7. ALUMINUM STOREFRONT WINDOW WITH INSULATED GLAZING
8. FASCIA BOARD COVERED WITH BLACK METAL TO MATCH ROOFING
9. STEEL COLUMN. PAINTED BLACK.
10. RIGID FOAM WITH STUCCO FINISH AROUND WINDOWS, 6" WIDE. STUCCO TO MATCH MAIN BUILDING COLOR
11. SIGNAGE (UNDER SEPARATE PERMIT)
12. METAL TUBE FENCING WITH 2 LAYERS OF PERFORATED METAL PANEL INSERTS TO SCREEN MECHANICAL UNITS. PAINTED BLACK. SEE DETAIL
13. 7 SHEET A500
14. NOT USED
15. NOT USED
16. KNOX BOX PER JURISDICTION FIRE DEPARTMENT REQUIREMENTS
17. FIRE DEPARTMENT CONNECTION
18. ALUMINUM CORNER TRIM. ANODIZED BLACK

NO	REVISION	DATE

SHEET DESCRIPTION

EXTERIOR ELEVATIONS



SHEET NO.

DR300

ISSUE DATE: 5 DEC 2022