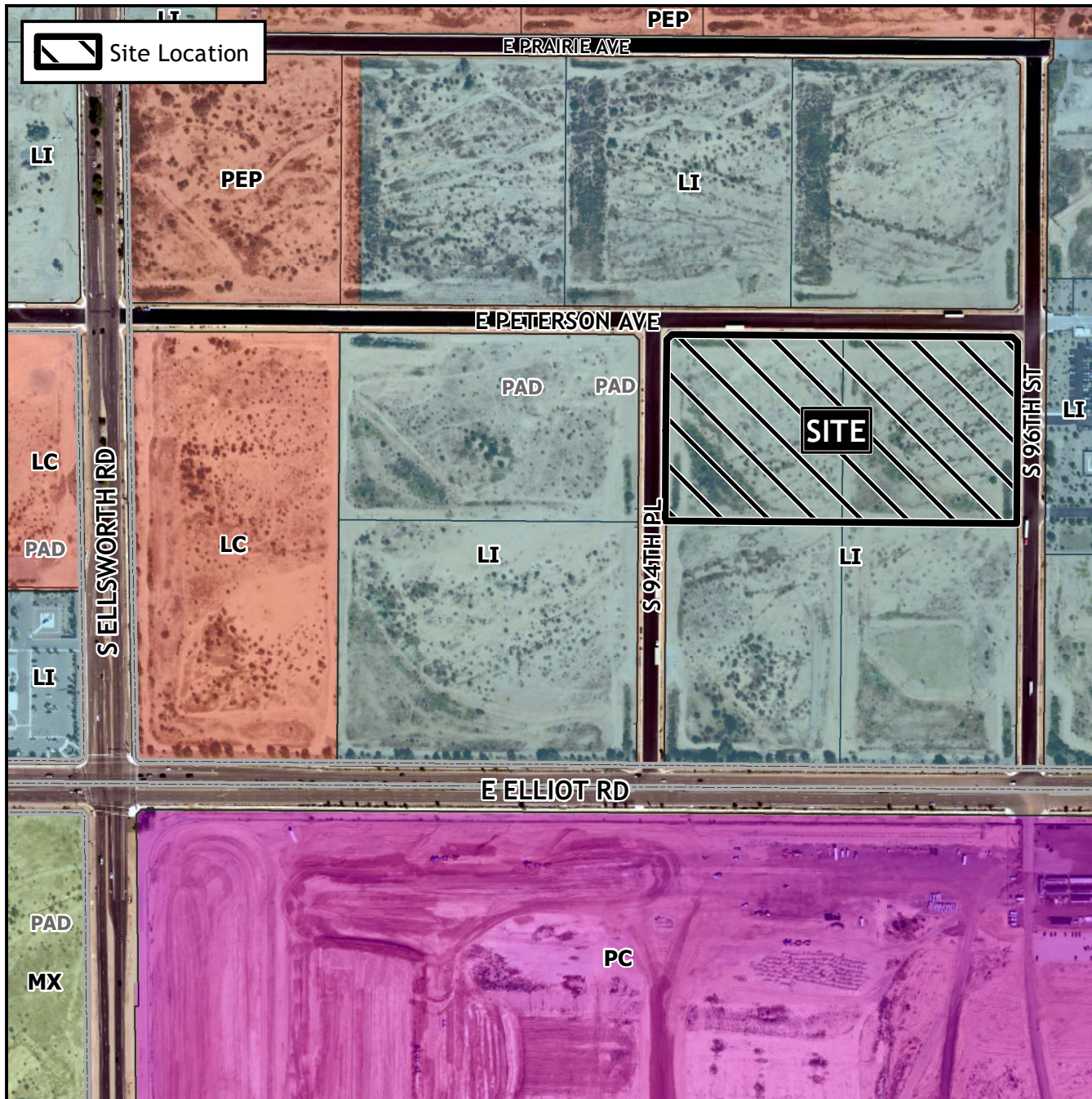


# Design Review Vicinity Map: DRB22-01111



## Case Details

### Case:

DRB22-01111

### Site / Address:

(District 6). Within the 9400 to 9600 blocks of East Peterson Avenue (south side), within the 3400 block of South 94th Place (east side), and within the 3400 block of South 96th Street (west side). Located north of Elliot Road and east of Ellsworth Road. (12± acres).

### Request:

Design Review for an industrial development

