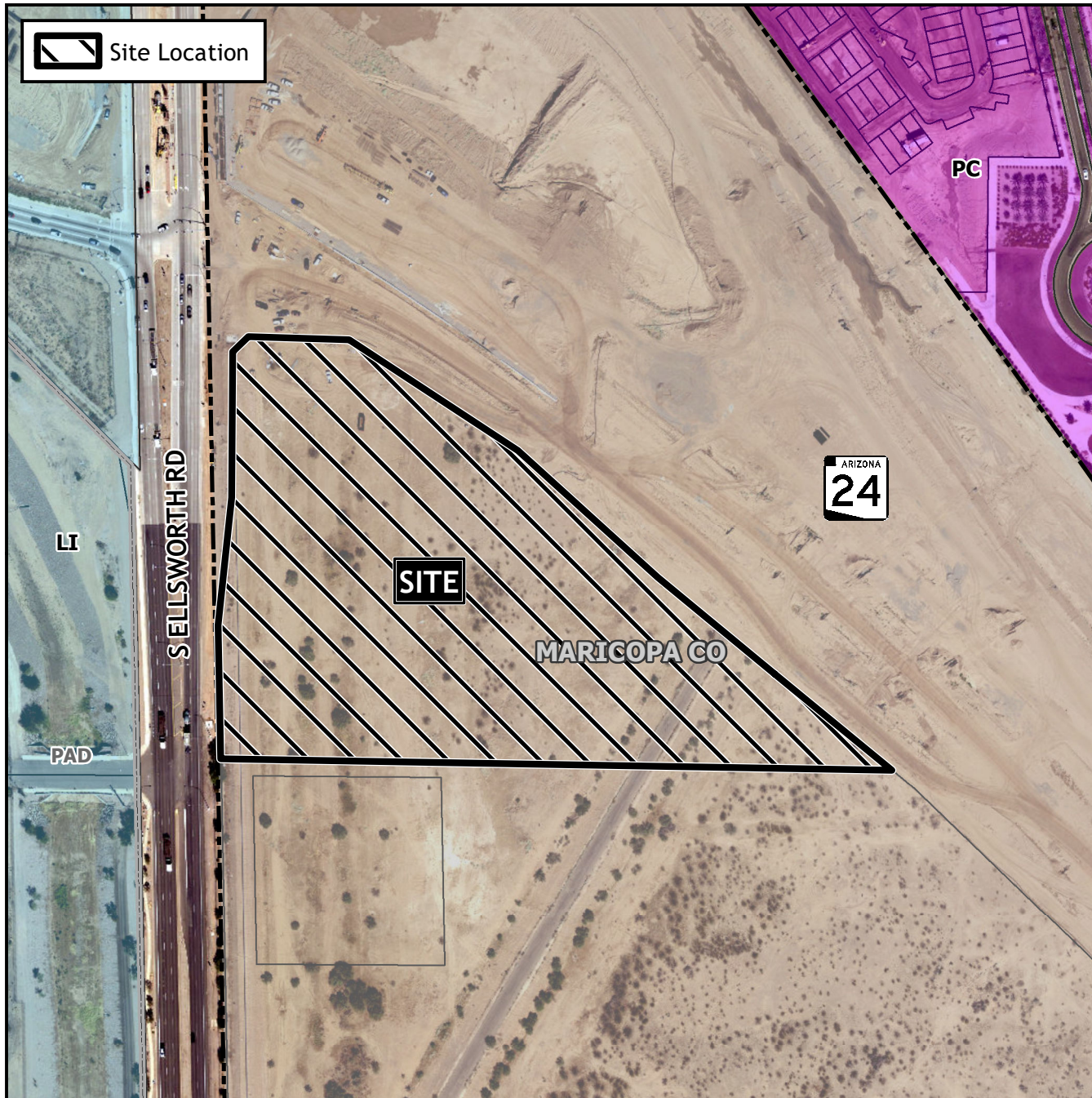


## Design Review Vicinity Map: DRB22-01246



## Case Details

### Case:

DRB22-01246

### Site / Address:

(District 6). Within the 5500 to 5600 Blocks of South Ellsworth Road (east side). Located south of the 24 Gateway Freeway on the east side of Ellsworth Road. (10± Acres).

### Request:

Design Review for a self-storage facility.

