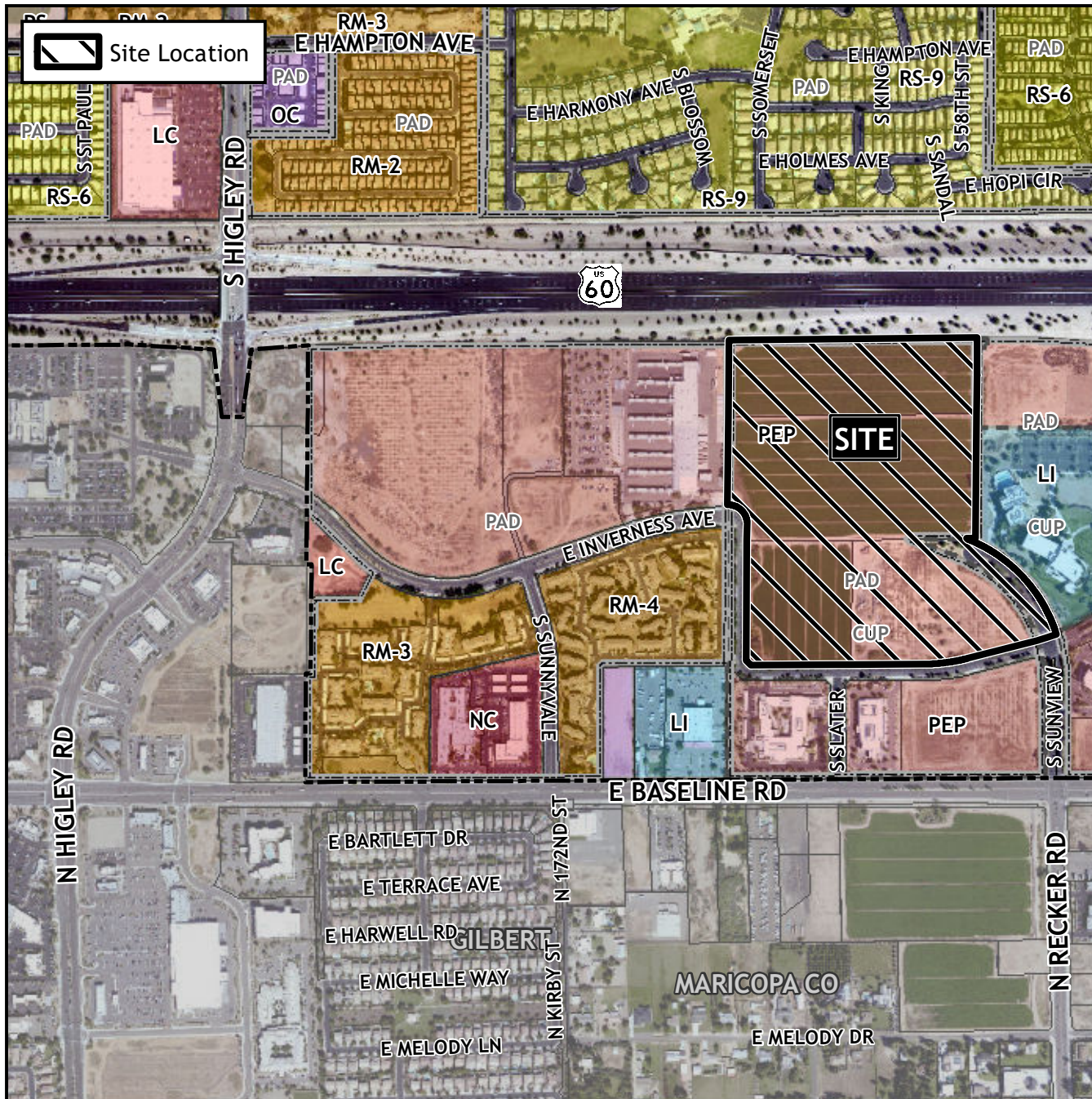


# Planning and Zoning Vicinity Map: ZON22-00263



## Case Details

**CASE:**

ZON22-00263

**PRE-PLAT :** ☒

### SITE / ADDRESS:

District 2. Within the 5600 to 5800 blocks of East Inverness Avenue (north and west side) and within the 5600 to 5800 blocks of South Sunview (north and south sides). Located east of Higley Road and north of Baseline Road (50± acres).

### REQUEST:

Rezone from Planned Employment Park with a Planned Area Development Overlay and Council Use Permit (PEP-PAD CUP) to Planned Employment Park with a Planned Area Development Overlay (PEP-PAD), Light Industrial with a Planned Area Development Overlay (LI-PAD), and Site Plan Review. This request will allow for an industrial development.

