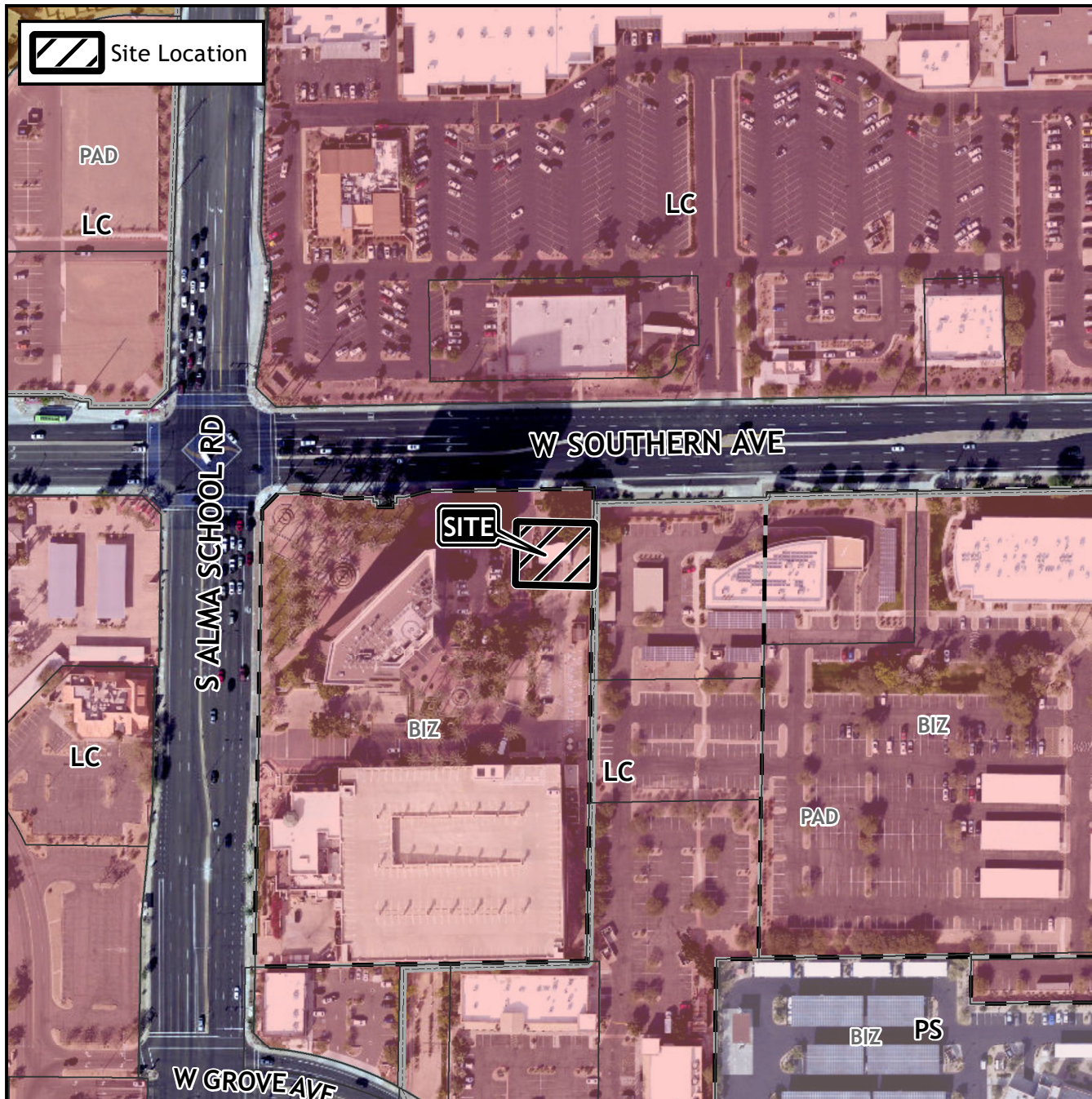


Board of Adjustment Vicinity Map: BOA22-01211



Case Details

Case:

BOA22-01211

Site / Address:

District 3. 1201 South Alma School Road.
Located east of South Alma School Road
and south of West Southern Avenue

Request:

Requesting a Special Use Permit (SUP) for
a Comprehensive Sign Plan (CSP) for an
existing financial institution in the
Limited Commercial with a Bonus
Intensity Zone (LC-BIZ) District.



0 150 300
Feet

