



DESIGN REVIEW BOARD

November 8, 2022



DRB22-00920



Request

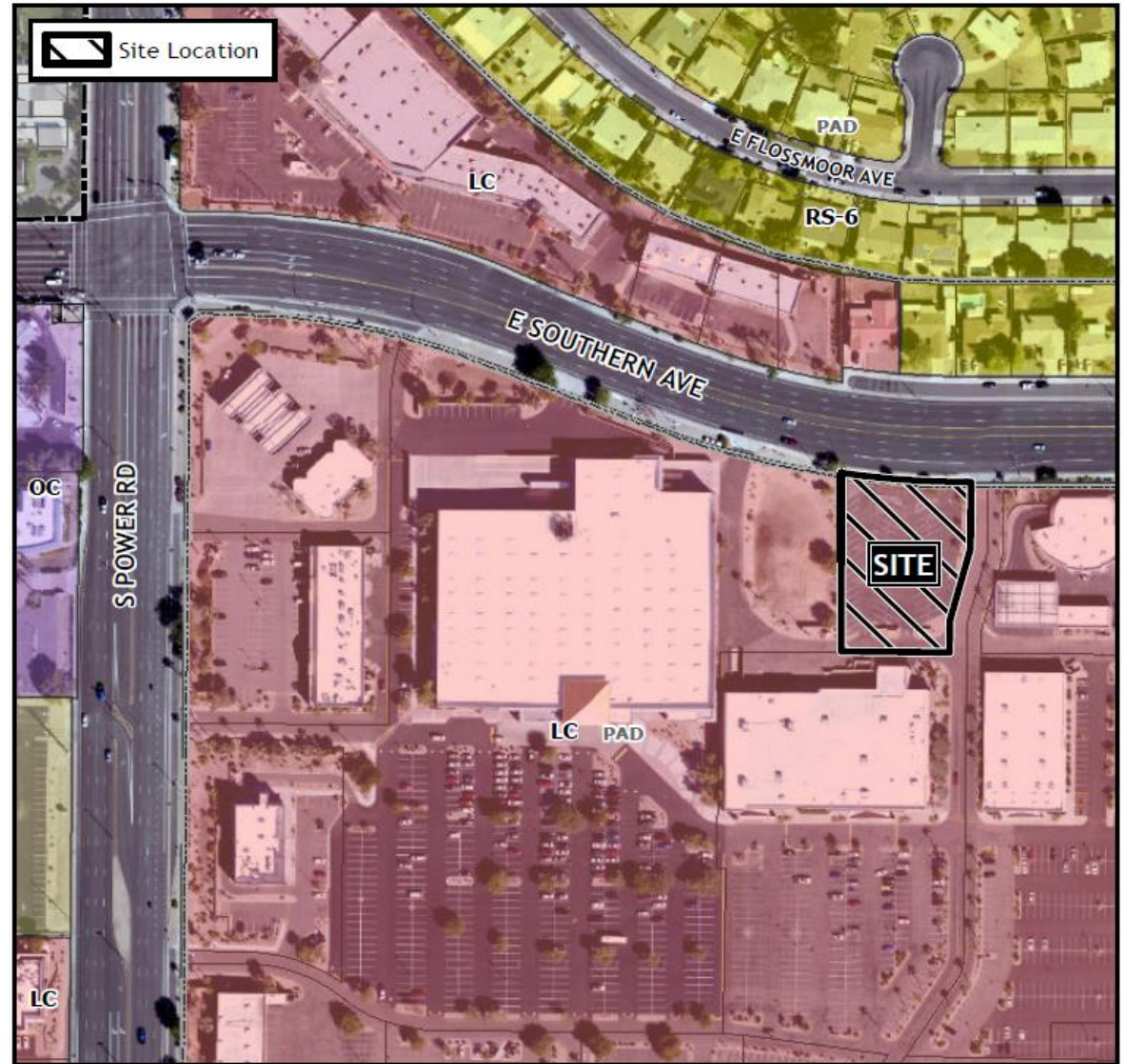
- Design Review

Purpose

- To allow for the development of a restaurant with drive-thru

Location

- South of Southern Avenue
- East of Power Road



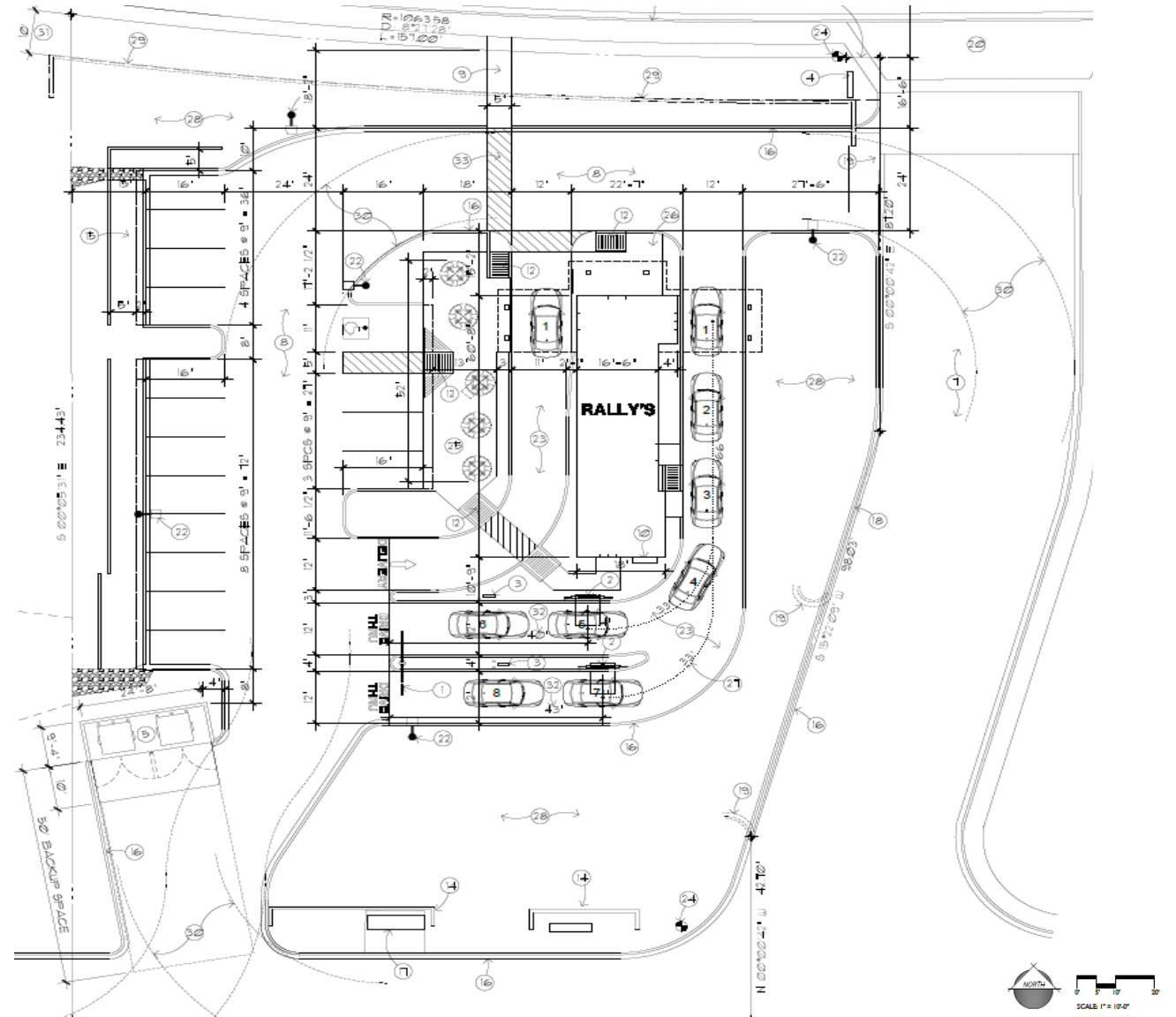
Site Photo

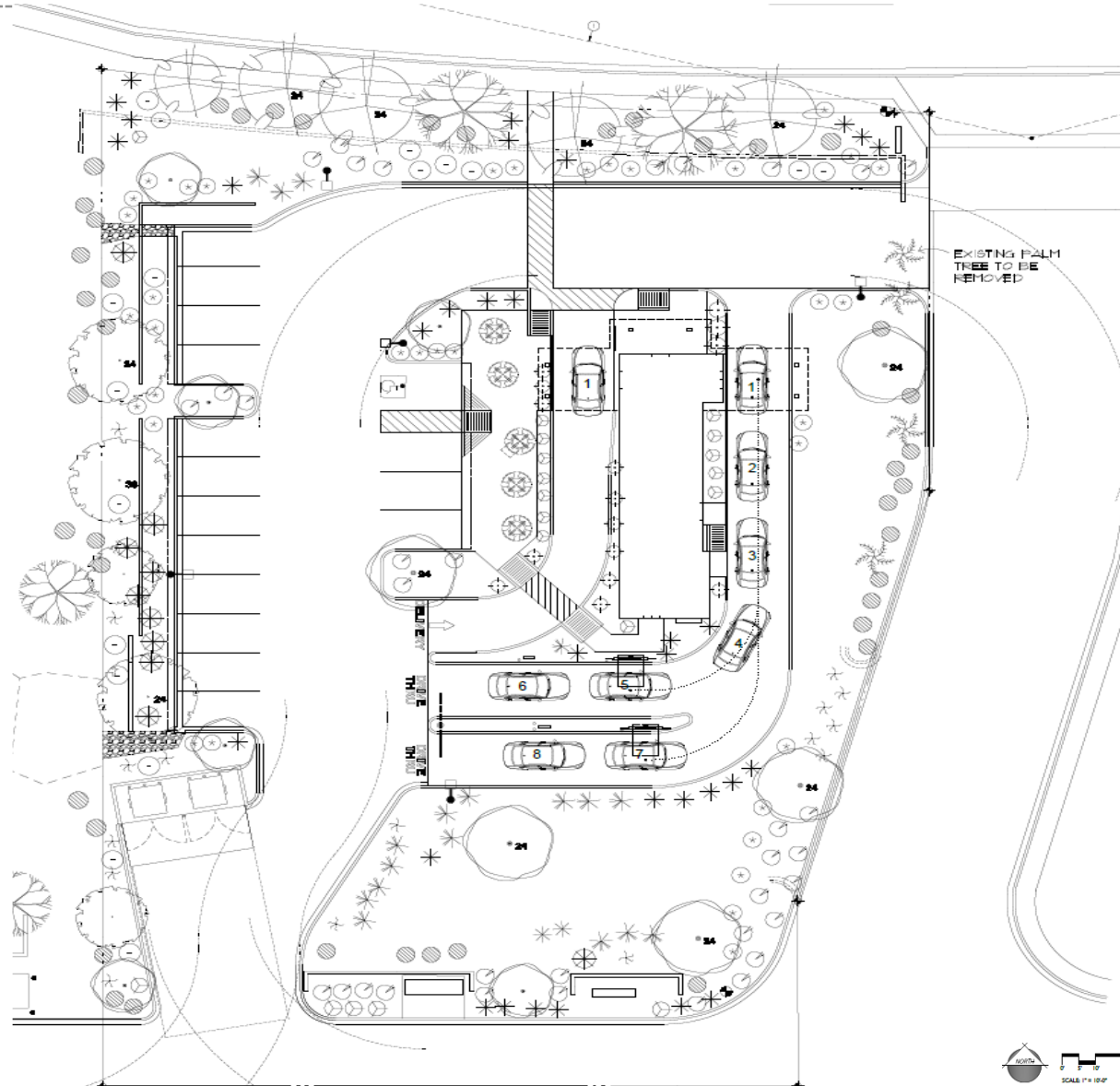


Looking south from Southern Avenue

Site Plan

- 1,073 SF building
- Outdoor patio with seating for twenty patrons
- Vehicle access from East Southern Avenue
- Parking spaces provided on site

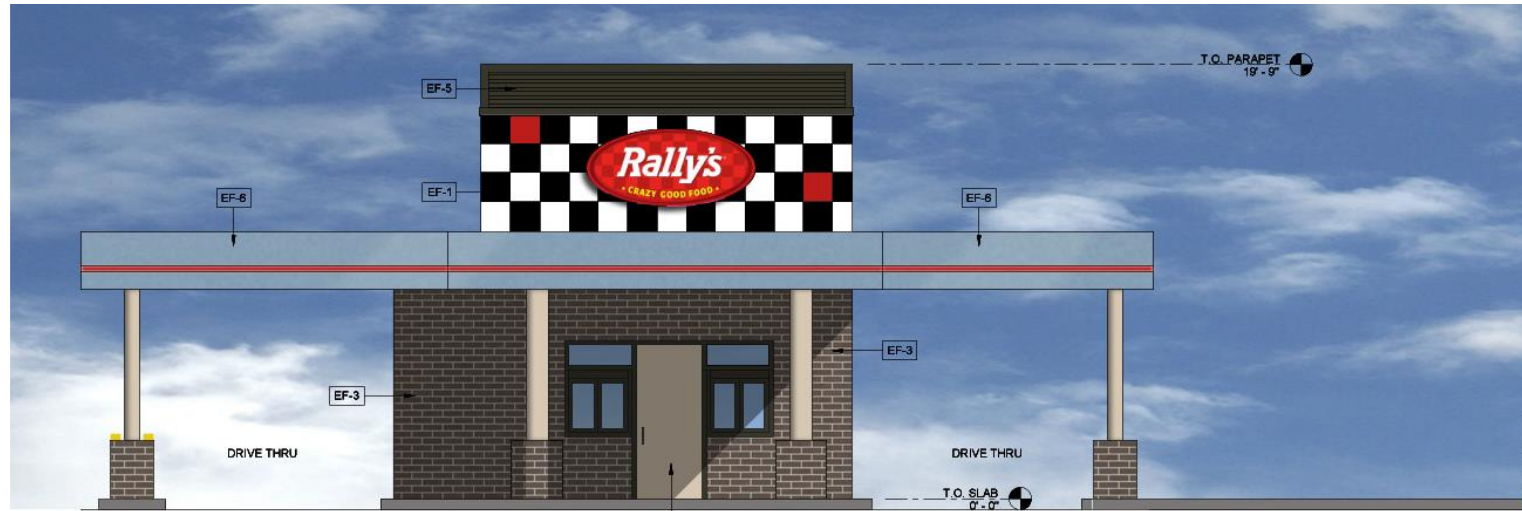




Landscape Plan

- Trees include palo brea, thornless mesquite and desert willow
- Shrubs and accents include red yucca, natal plum, baja ruellia and dwarf bottle brush

Elevations



North Elevation



East Elevation

Elevations



West Elevation



South Elevation

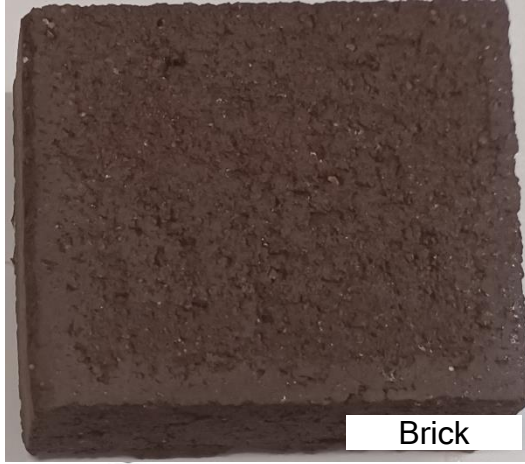
Renderings



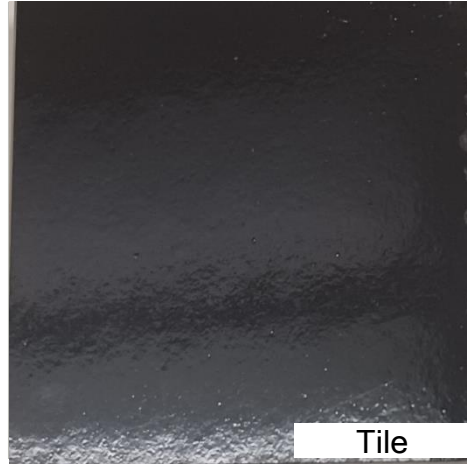
Renderings



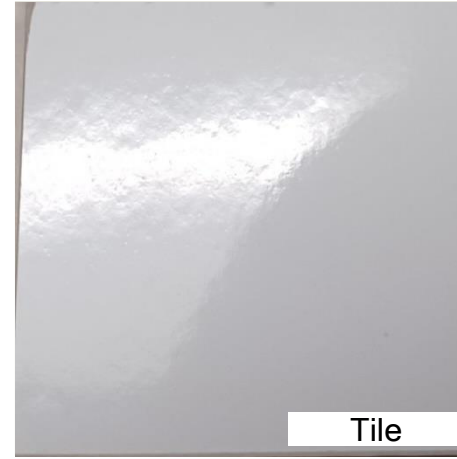
Materials Board



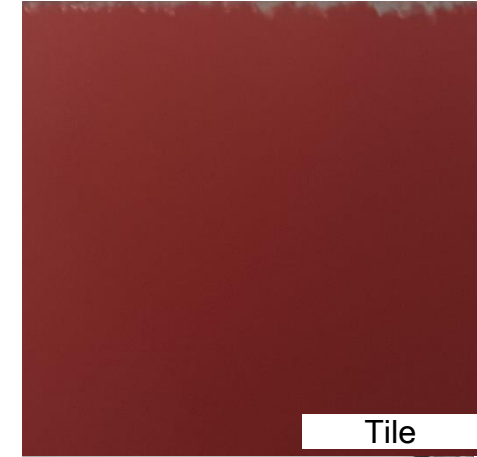
Brick



Tile



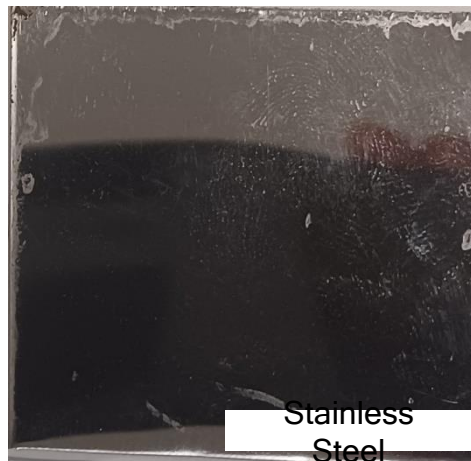
Tile



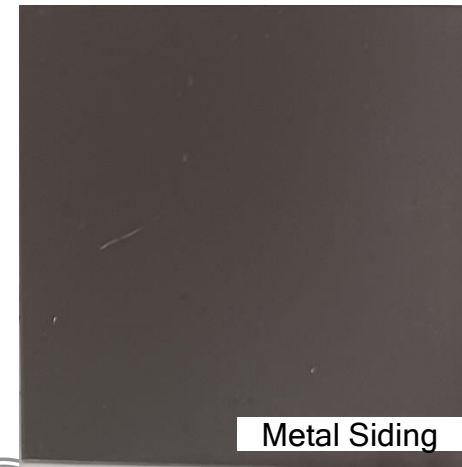
Tile



Lap Siding



Stainless
Steel



Metal Siding



Stucco

Lighting

DATE: LOCATION:
TYPE: PROJECT:
CATALOG #:

LIGHT

1 lumens
location or Remodel

rd/Reverse), DALI, DMX,
controls capability available

LITEFRAME
2.0



RELATED PRODUCTS
LFR-GRD LFR-GRA
LFR-GRW LITEFRAME Family
SERVICE PROGRAMS
STOCK

ELECTRICAL

- Chip-on-board LED with 2 SDCM
- Multiple CCTs: 80+ or 90+ CRI
- Long LED life: L90 at >50,000 hours (TM-21)
- Universal voltage 120-277V driver, 347V optional
- UL Class 2, inherent short circuit and overload protection, RoHS compliant
- Flicker-free dimming options in a wide range of protocols from 1% to <0.1% performance
- 0-10V, Phase (Forward/Reverse), DALI, DMX, Lutron 2-wire Forward Phase, and EcoSystem options
- Remote emergency battery option available

INSTALLATION

- Accommodates ceiling thickness from 0.50" to 2.50"
- Fixture Module including driver fully accessible from above or below the ceiling
- 10L-15L Fixture Modules are inherently protected IC without the use of IC housing enclosure, (IC housing is still recommended when using loose-fill or spray foam insulation types.)

CERTIFICATIONS

- cCSAus certified to UL 1998
- For 30L: Marked spacing required 36" fixture center to center; 18" fixture center to building member; 0.5" above fixture
- Suitable for damp locations
- EMT: Certified under UL 924 standard for emergency lighting and power equipment
- Approved for 8 (4 in/4 out) No. 12AWG conductors rated for 90°C through wiring

WARRANTY

- 5 year warranty
- See [HLI Standard Warranty](#) for additional information

KEY DATA	
Lumen Range	1000-3000
Wattage Range	8-29
Efficacy Range (LPW)	105-120
Reported Life (Hours)	190 / >50,000
Input Current (mA)	66-242 (120V)

^aBased on Specular, 29K, 80 CRI

a division of Hubbell Lighting, Inc. Specifications subject to change without notice.
Hubbell Lighting, Inc. 29657 / Tel: 866/678-8000 / Website: www.hubbell.com



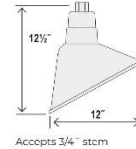
MILLENNIUM LIGHTING

Millennium Lighting
www.millenniumlighting.com

RAS12 - R SERIES 12" ANGLE SHADE

This item can be converted to a pendant or wall sconce with purchase of separate compatible downrod or goose neck. Please see compatible downrods and arms below:

- Compatible downrods: RS1, RS2, and RS3
- Compatible with arms: RGN10, RGN12, RGN13, RGN15, RGN22, RGN23, RGN24, RGN30, and RGN41
- Compatible with wire guard: RWG12



Dimensions

Width 12"
Height 12 1/2"
Wire 100"

Finish & Material

Finishes
ABR - Architectural Bronze
BP - Black Porcelain
GA - Galvanized
GY - Gray
NB - Navy Blue
NC - Natural Copper
SB - Satin Black
SFP - Sea Foam Porcelain
SG - Satin Green
SR - Satin Red
WH - White
WP - White Porcelain
Material Metal

Wattage

Bulbs 1-Medium A21
Watts per Bulb 200W
Voltage 120V
Bulbs Included No

Certification

UL Listed Wet Location

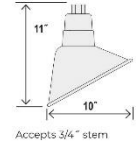
Item Number

SKU RAS12

RAS10 - R SERIES 10" ANGLE SHADE

This item can be converted to a pendant or wall sconce with purchase of separate compatible downrod or goose neck. Please see compatible downrods and goose neck below:

- Compatible downrods: RS1, RS2, and RS3
- Compatible with arms: RGN10, RGN12, RGN13, RGN15, RGN22, RGN23, RGN24, RGN30, and RGN41
- Compatible with wire guard: RWG10



Dimensions

Width 10"
Height 11"
Wire 100"

Finish & Material

Finishes
ABR - Architectural Bronze
BP - Black Porcelain
GA - Galvanized
GY - Gray
NB - Navy Blue
NC - Natural Copper
SB - Satin Black
SFP - Sea Foam Porcelain
SG - Satin Green
SR - Satin Red
WH - White
WP - White Porcelain
Material Metal

Wattage

Bulbs 1-Medium A21
Watts per Bulb 200W
Voltage 120V
Bulbs Included No

Certification

UL Listed Wet Location

Item Number

SKU RAS10

R SERIES

"Making the Desirable Affordable"

Note: All finishes on outdoor lighting must be properly maintained and treated. Therefore, we suggest cleaning with a regular application of finish preserving & restoring products such as Regipol.

DATE: LOCATION:
TYPE: PROJECT:
CATALOG #:

ity of IES distributions for
at and campus parking lots
to target zone illumination with
ght trespass issues

ng bridges and overpasses
gency sensing, NX Distributed
DN



WISCAPE



RELATED PRODUCTS

Airo Cimarion LED Ratio Family

ELECTRICAL (CONTINUED)

- Ambient operating temperature -40°C to 40°C
- Drivers have greater than 90% power factor and less than 20% THD
- LED drivers have output power over-voltage, over-current protection and short circuit protection with auto recovery
- Field replaceable surge protection device provides 20kA protection meeting ANSI/IEEE C62.41.2 Category C High and Surge Location Category C3. Automatically takes fixture offline for protection when device is compromised

CONTROLS

- Photo control, occupancy sensor and wireless available for complete on/off and dimming control
- 7-pin ANSI C136.41-2013 photocontrol receptacle option available for twist lock photocontrols or wireless control modules (control accessories sold separately)
- 0-10 V Dimming Drivers are standard and dimming leads are extended out of the luminaire unless control options require connection to the dimming leads. Must specify if wiring leads are to be greater than the 6" standard
- SiteSync™ wireless control system is available via 7-pin See ordering information and details at: www.hubbellighting.com/sitesync
- NX Distributed Intelligence™ available with in fixture wireless control module, features dimming and occupancy sensor
- WISCAPE™ available with in fixture wireless control module, features dimming and occupancy sensor via 7 pin

CERTIFICATIONS

- DLC® (DesignLights Consortium Qualified), with some Premium Qualified configurations. Please refer to the DLC website for specific product qualifications at www.designlights.org
- Listed to UL1596 and CSA C22.2 #250.0.24 for wet locations and 40°C ambient temperatures
- 3S rated for ANSI C136.31 high vibration applications
- Fixture is IP65 rated
- Meets IBA recommendations using 3K CCT configuration at 0 degrees of tilt
- This product qualifies as a "designated country construction material" per FAR 52.225-11 Buy American-Construction Materials under Trade Agreements effective 04/23/2020. See Buy American Solutions

WARRANTY

- 5 year limited warranty
- See [HLI Standard Warranty](#) for additional information

KEY DATA	
Lumen Range	3,000-48,000
Wattage Range	25-340
Efficacy Range (LPW)	118-155
Fixture Projected Life (Hours)	L70>60K
Weights lbs. (kg)	13.5-24 (6.1-10.9)

Outdoor Lighting, a division of Hubbell Lighting, Inc. Specifications subject to change without notice.
Hubbell Lighting, Inc. 29657 / Tel: 866/678-8000 / Website: www.hubbell.com



Alternative Compliance

Section 11-6-3



Base treatment of building

Summary

Findings

Staff is seeking your review and recommendation on the following:

- ✓ Proposed building and landscape architecture
- ✓ Alternative compliance for base treatment

Staff welcomes any feedback



DESIGN REVIEW BOARD

November 8, 2022