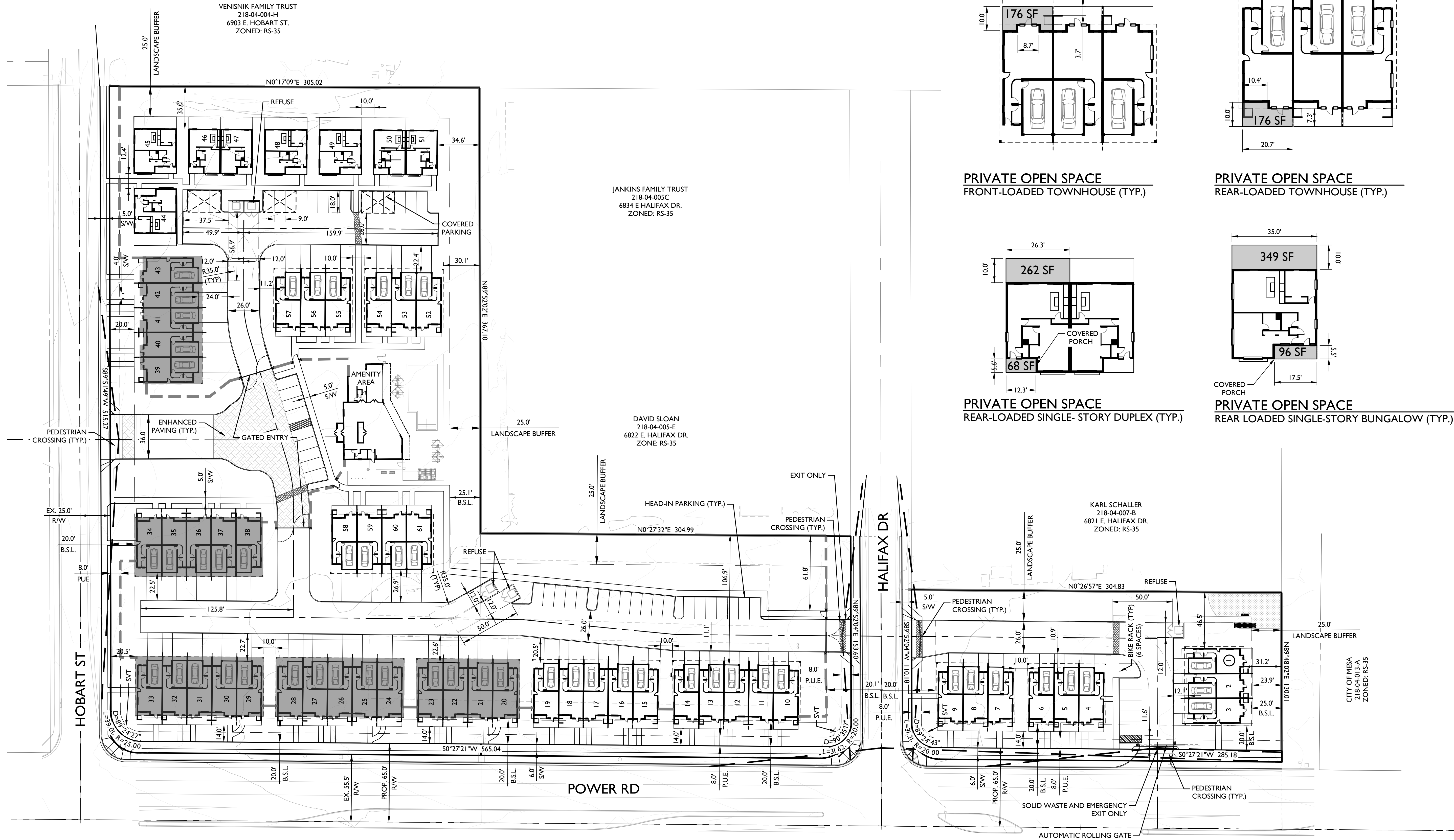
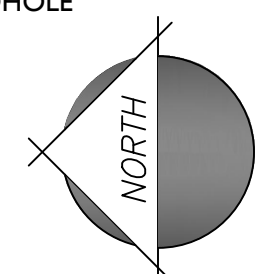


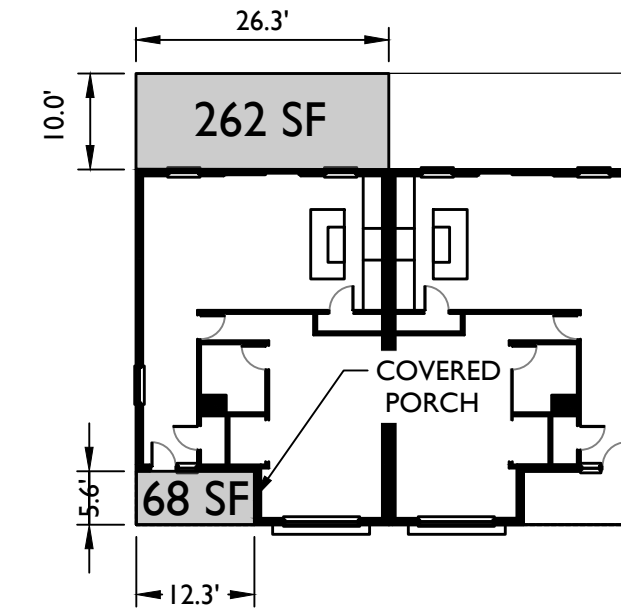
LEGEND

- SET 1/2" REBAR LS#41076
- ▲ FOUND 1/2" REBAR
- NOTHING FOUND/NOTHING SET
- BRASS CAP
- FOUND PK NAIL
- · · · · EXISTING CHAIN LINK FENCE
- EXISTING WOOD FENCE
- BCHH BRASS CAP IN HANDHOLE
- ROW RIGHT OF WAY
- 3-STORY BUILDING

40 0 40 80
scale: 1" = 40'
feet

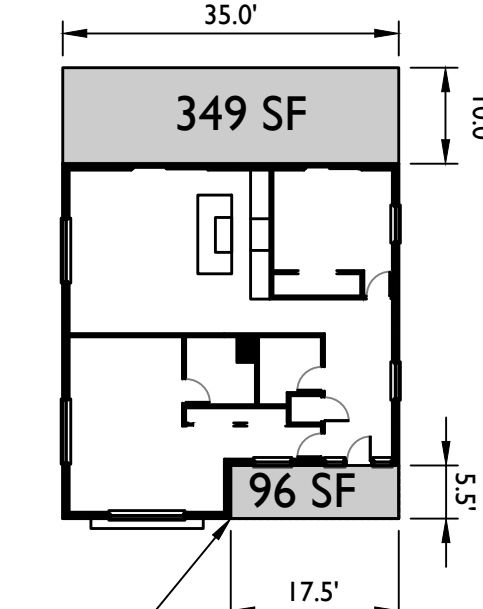


PRIVATE OPEN SPACE
FRONT-LOADED TOWNHOUSE (TYP.)



PRIVATE OPEN SPACE
REAR-LOADED SINGLE-STORY DUPLEX (TYP.)

PRIVATE OPEN SPACE
REAR-LOADED TOWNHOUSE (TYP.)



PRIVATE OPEN SPACE
REAR LOADED SINGLE-STORY BUNGALOW (TYP.)

COVERED PORCH

BARE DWIGHT W TR
141-64-018-A
BK. 59 PG.12 MCR
ZONED: RS-9

BARE DWIGHT W TR
141-64-017-A
BK. 59 PG.12 MCR
ZONED: RS-9

BARE DWIGHT W TR
141-64-017-A
BK. 59 PG.12 MCR
ZONED: RS-9

NOTE: ALL PEDESTRIAN CROSSINGS SHALL BE RAISED A MINIMUM OF 3" AND MADE DISTINCT BY USE OF TEXTURED PAVING AND CONTRASTING COLOR.

1130 N. Alma School Road, Suite120
Mesa, AZ 85201
T:480.503.2250 | F:480.503.2258
www.epsgroupinc.com

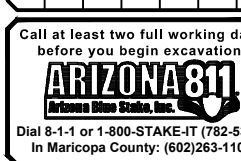


The Jackson
Mesa, Arizona

FINAL SITE PLAN

Project:

Revisions:



Designer: TS
Drawn by: STAFF







Preliminary
Not For
Construction
Or
Recording

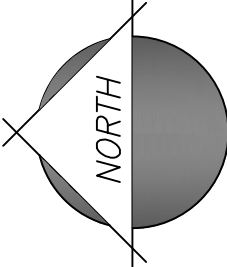
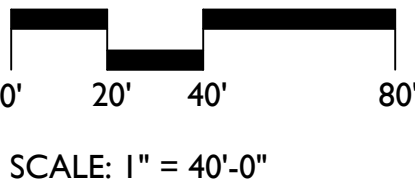
Job No.
21-0327.1

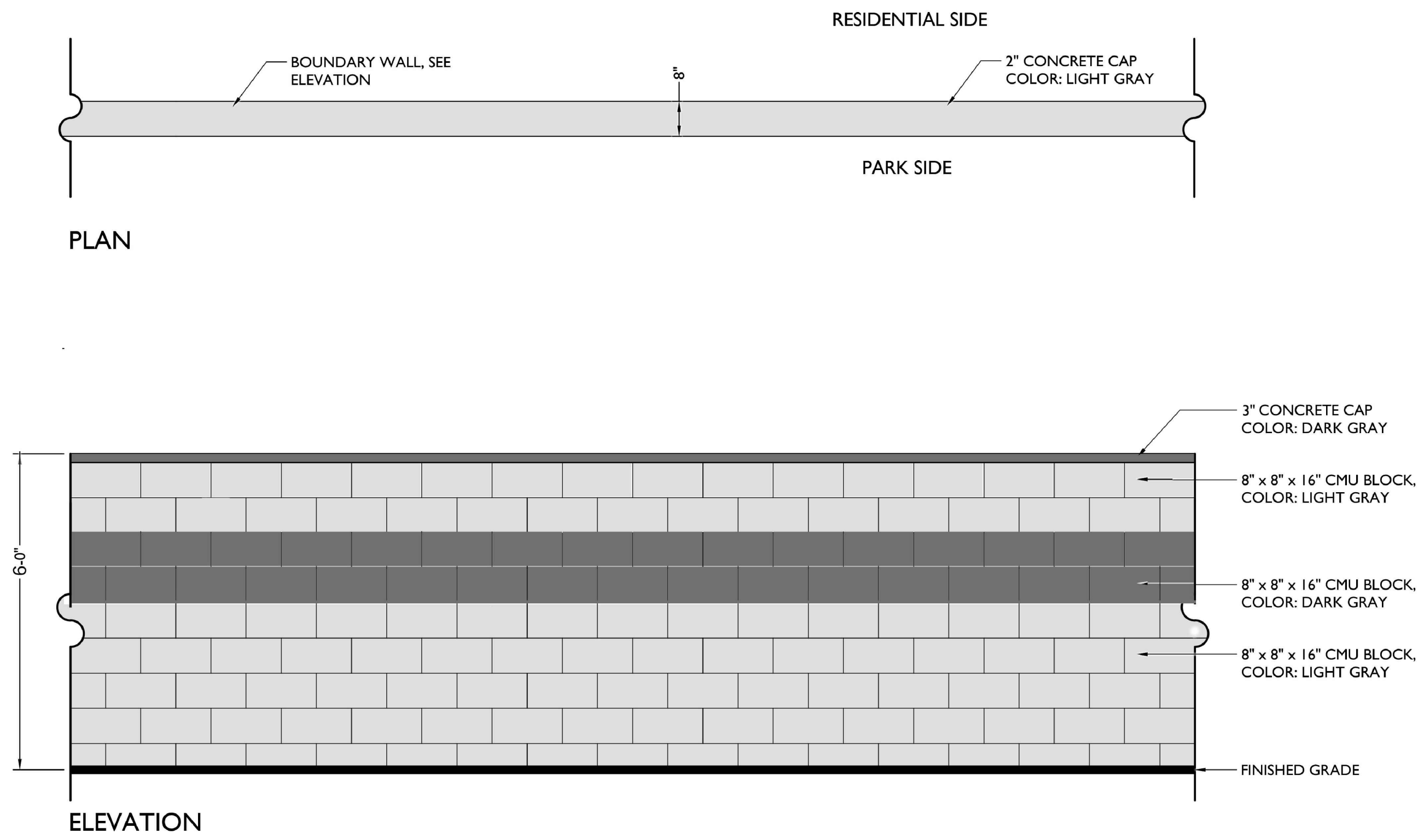
SP01

Sheet No.
2
of 02

WALLS AND SIGNAGE LEGEND

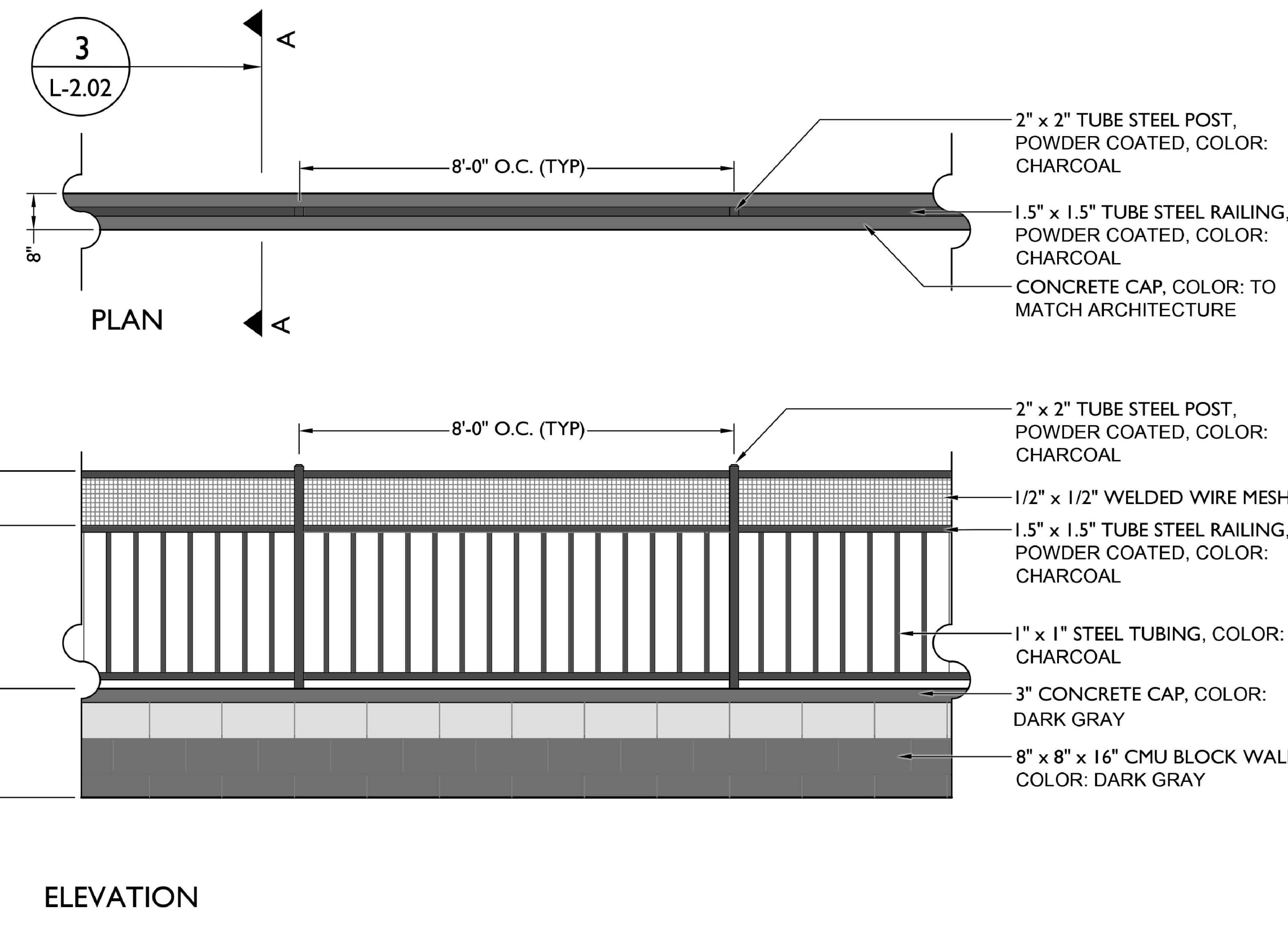
SYMBOL	ITEM
	6' CMU PERIMETER WALL, SEE DETAIL 1 ON SHEET L-2.02
	6' VIEW FENCE, SEE DETAILS 2 AND 3 ON SHEET L-2.02
	3'-6" PRIVATE YARD WALL SEE DETAILS 3 ON SHEET L-2.03
	6' TRASH ENCLOSURE WALL, SEE DETAIL 4 ON SHEET L-2.02
	MONUMENT SIGN
	MAILBOX





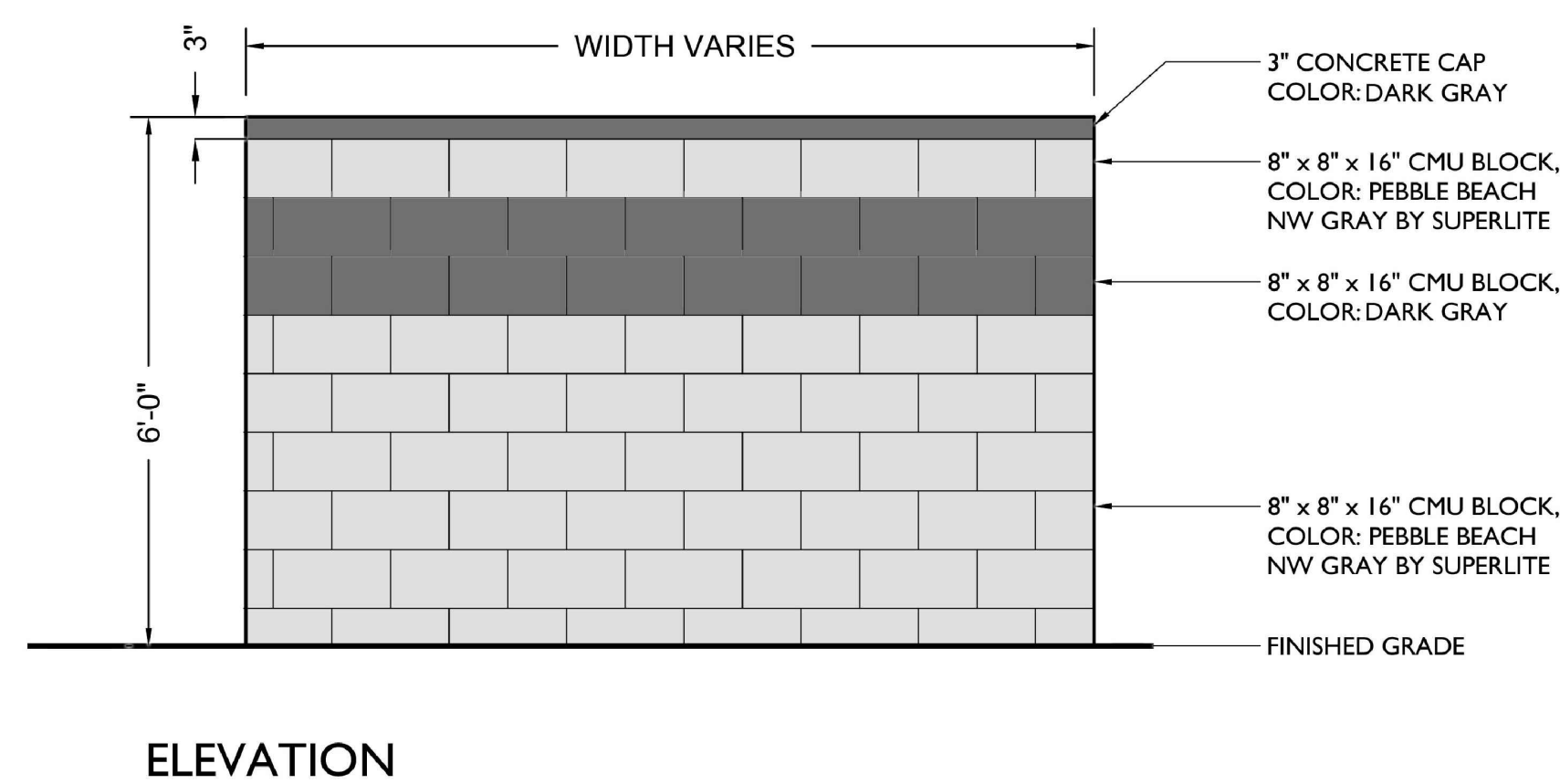
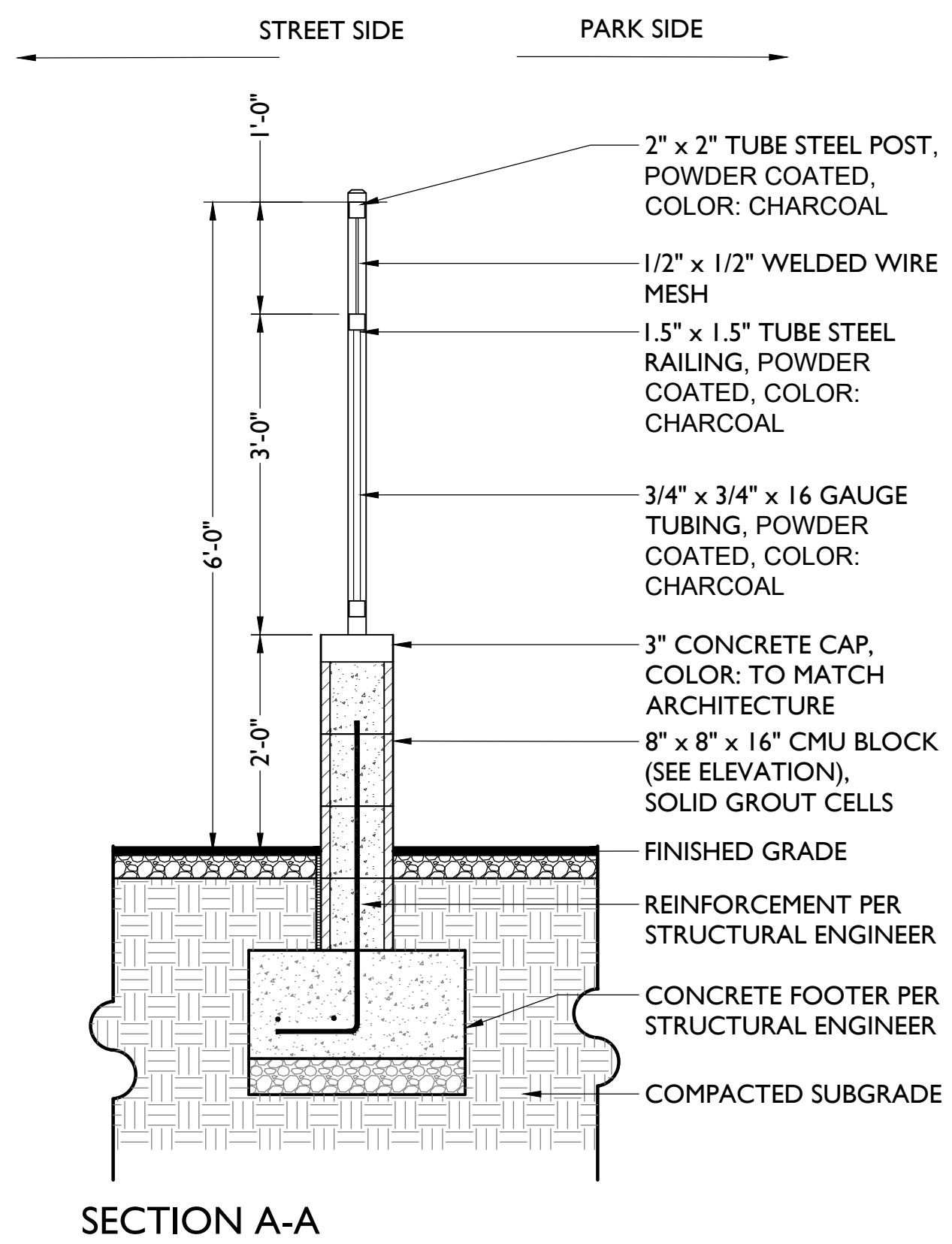
1 6' CMU PERIMETER WALL

Scale: 1/2" = 1'-0"



2 6' VIEW FENCE

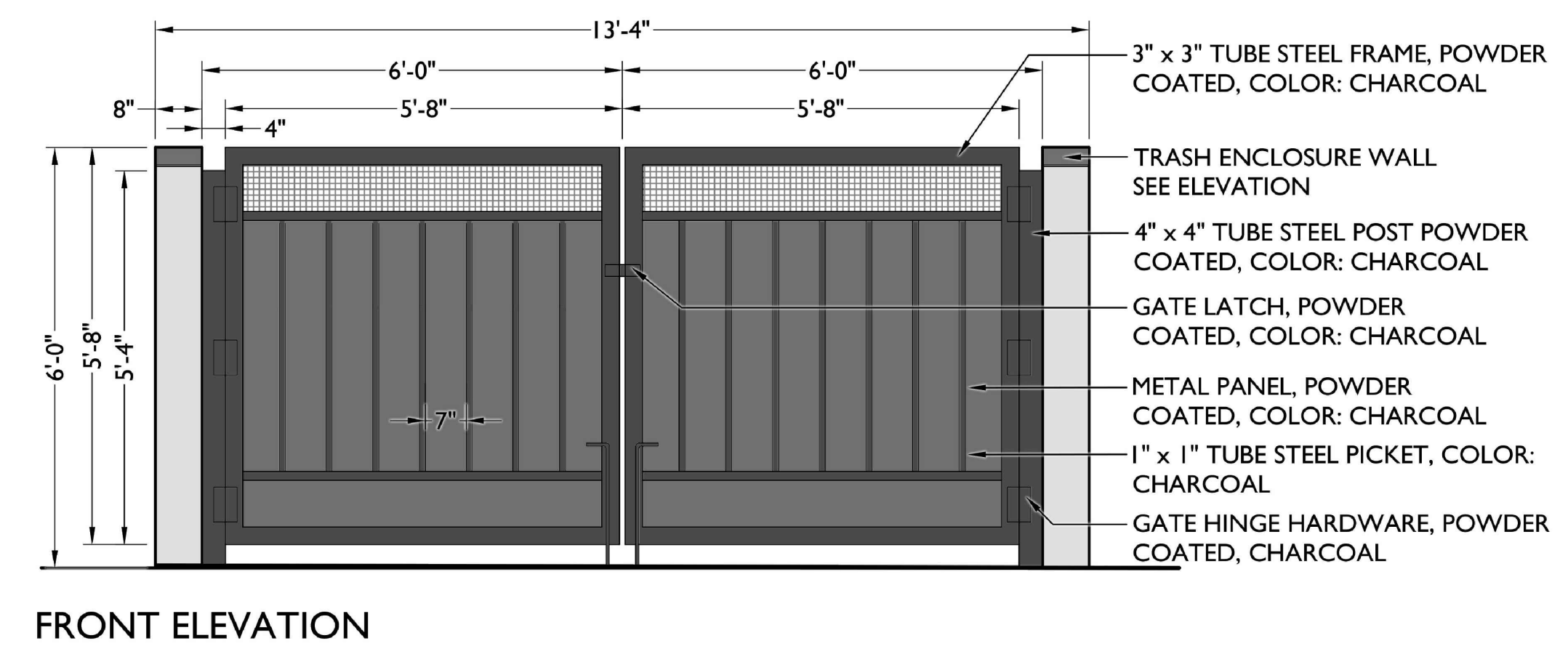
Scale: 1/2" = 1'-0"



4 6' TRASH ENCLOSURE WALL & PRIMETER WALL

Scale: 1/2" = 1'-0"

- GENERAL NOTES:
- SEE MANUFACTURER'S RECOMMENDATIONS FOR RAIL INSTALLATION.
 - VERIFY RAIL DIMENSIONS WITH MANUFACTURER'S SPECIFICATIONS AND SHOP DRAWINGS.



5 6' TRASH ENCLOSURE GATE

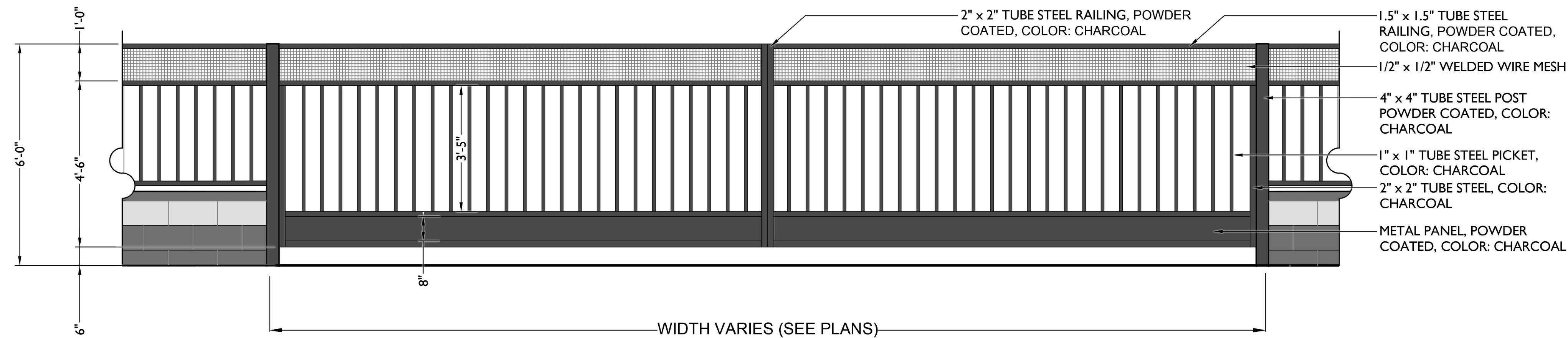
Scale: 1/2" = 1'-0"

3 6' VIEW FENCE

Scale: 3/4" = 1'-0"

GENERAL NOTES:

- 1. SEE MANUFACTURER'S RECOMMENDATIONS FOR GATE INSTALLATION.
- 2. VERIFY GATE DIMENSIONS WITH MANUFACTURER'S SPECIFICATIONS.
- 3. MANUFACTURER TO SIZE POSTS AND STRUCTURAL INFORMATION BASED ON WEIGHT OF GATE AFTER FABRICATION.



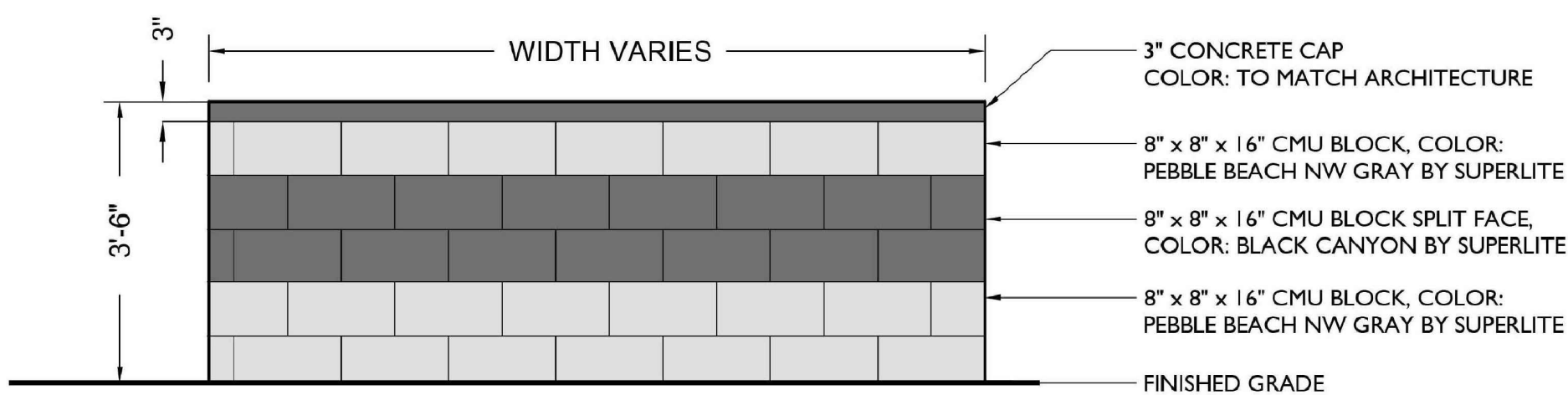
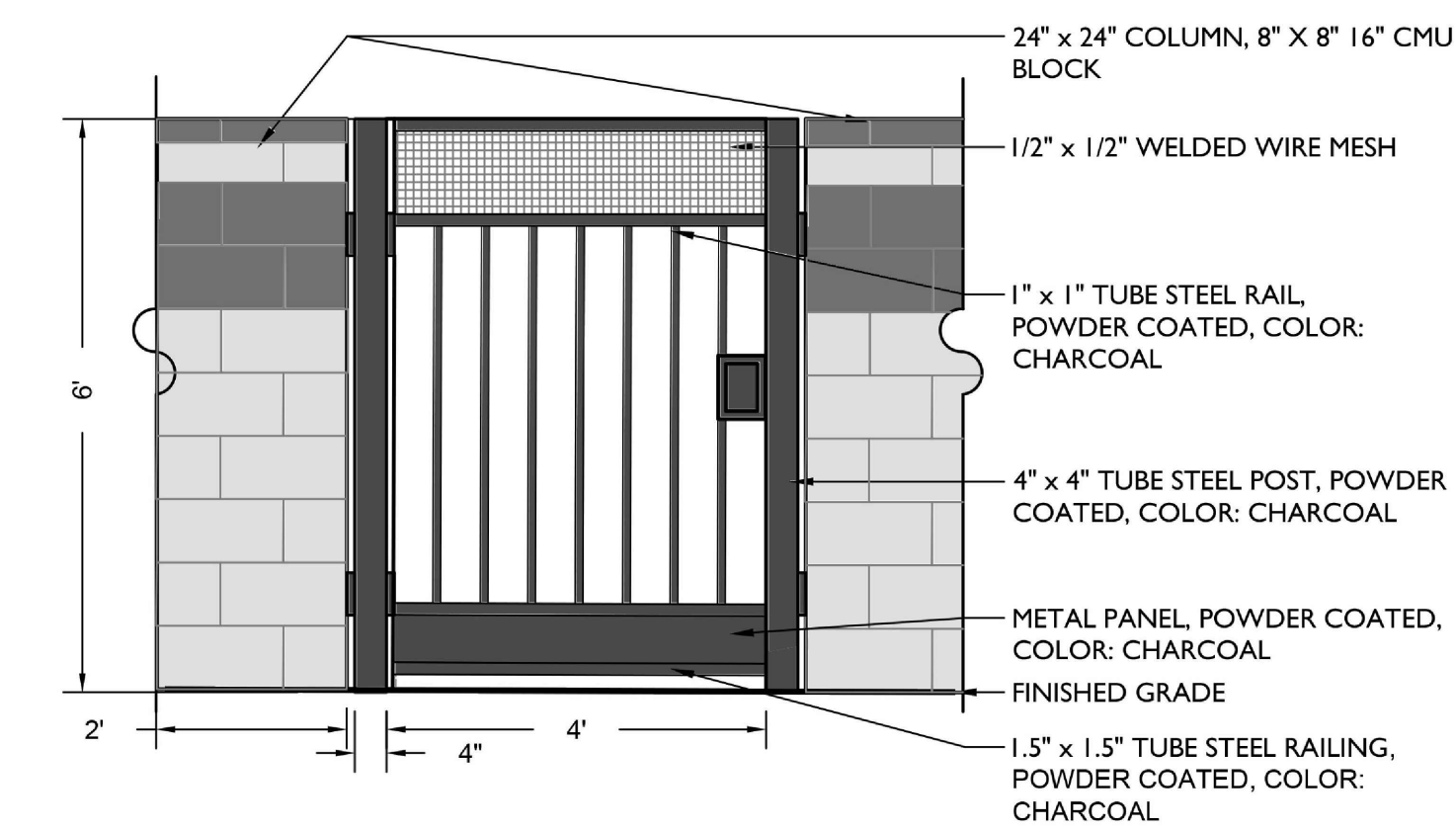
ELEVATION

1 VEHICULAR GATE

Scale: 1/2" = 1'-0"

2 PEDESTRIAN GATE

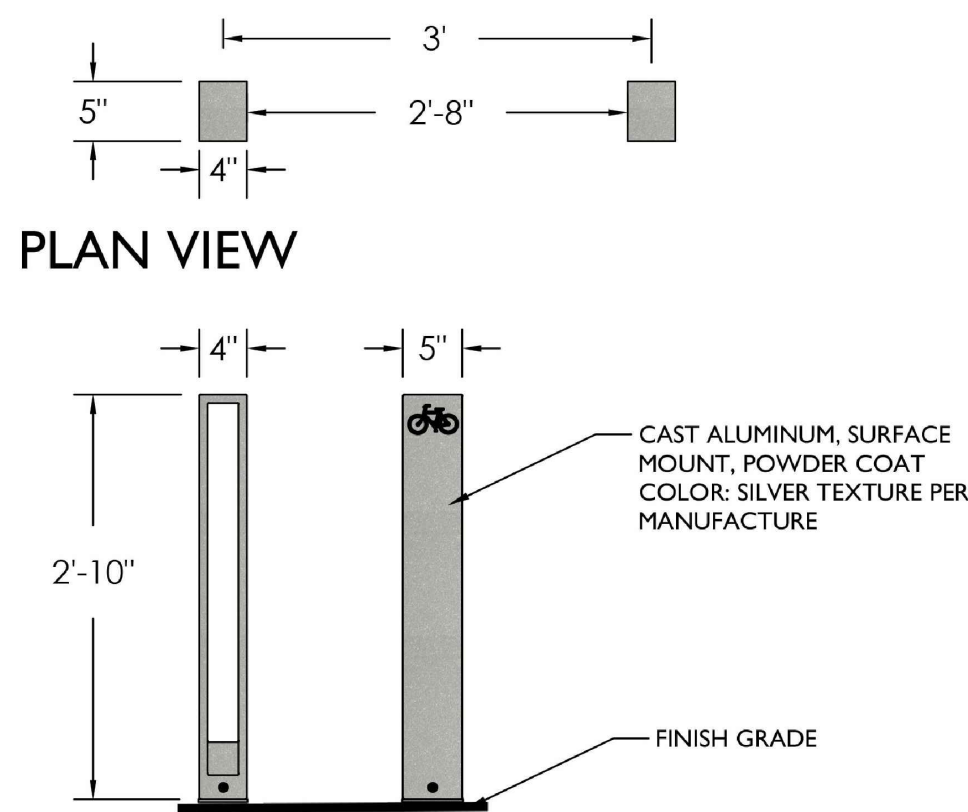
Scale: 1/2" = 1'-0"



ELEVATION

3 3'-6" - PRIVATE YARD WALL

Scale: 1/2" = 1'-0"



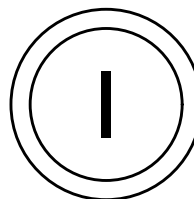
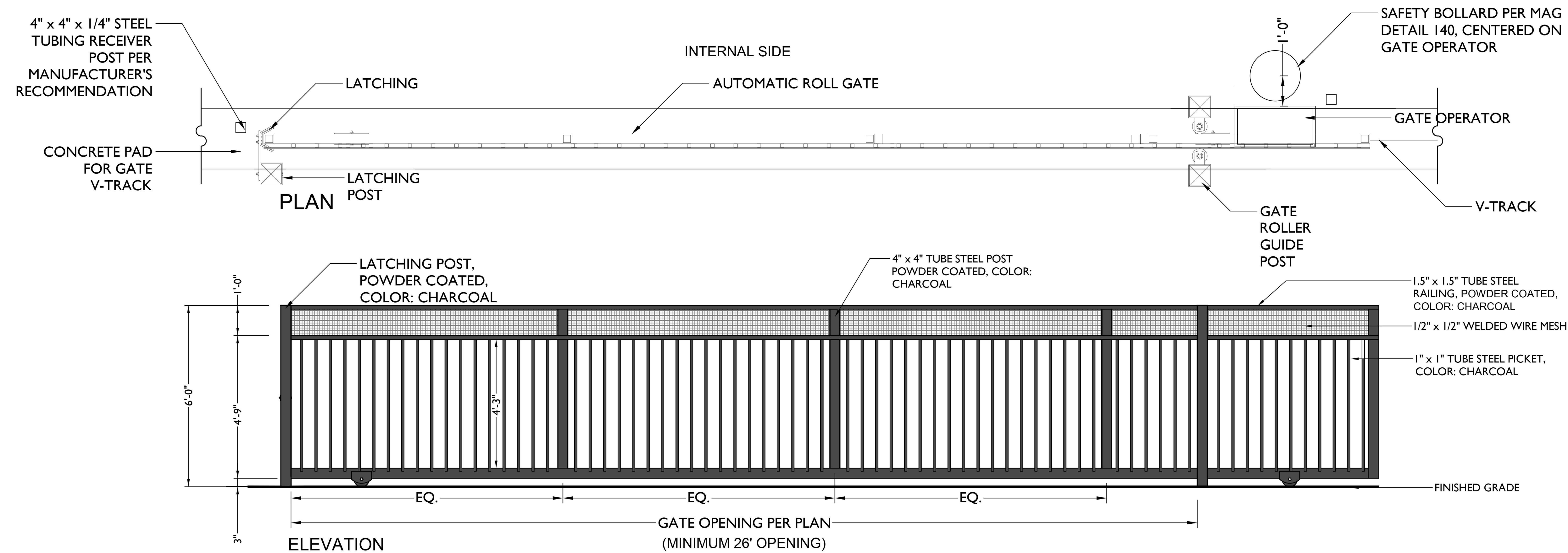
ELEVATION

4 CAPITOL BIKE RACK

Scale: 3/4" = 1'-0"

GENERAL NOTES:

1. CONTRACTOR TO SUBMIT SHOP DRAWINGS FOR APPROVAL PRIOR TO CONSTRUCTION. INSTALL SLIDING GATE PER MANUFACTURERS RECOMMENDATIONS.
2. VERIFY GATE DIMENSIONS WITH MANUFACTURER'S SPECIFICATIONS.
3. MANUFACTURER TO SIZE POSTS AND STRUCTURAL INFORMATION BASED ON WEIGHT OF GATE AFTER FABRICATION.

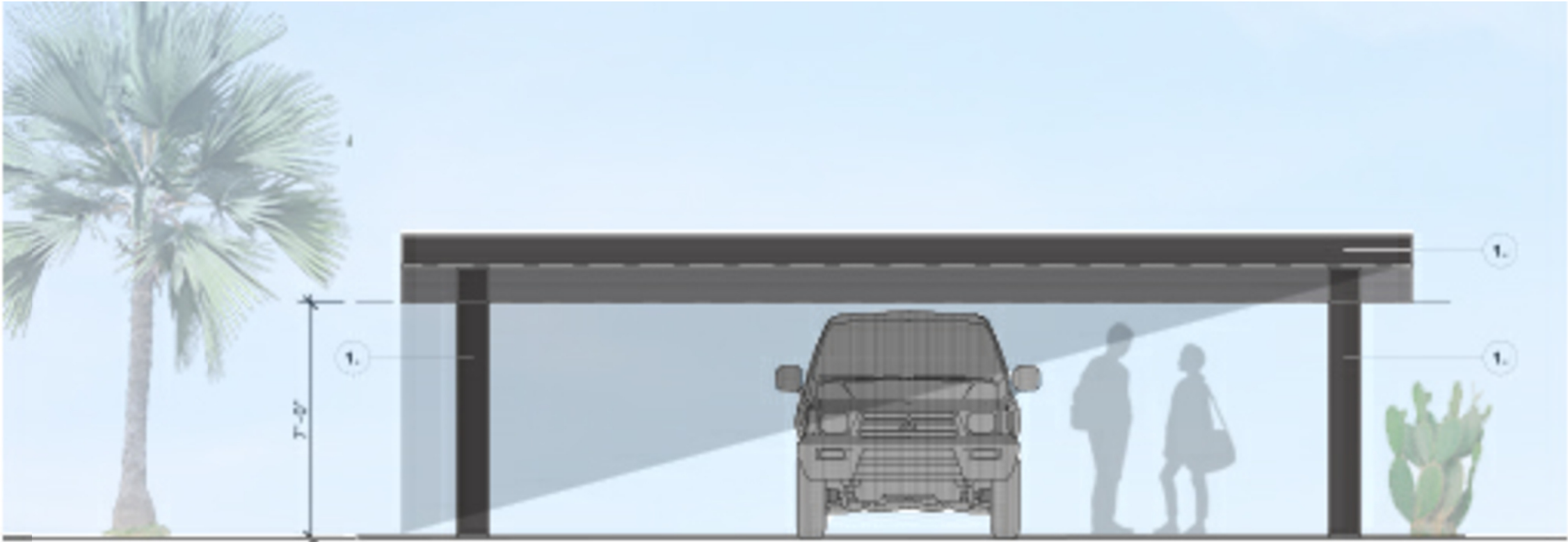


AUTOMATIC ROLLING GATE FOR SOLID WASTE & EMERGENCY EXIT

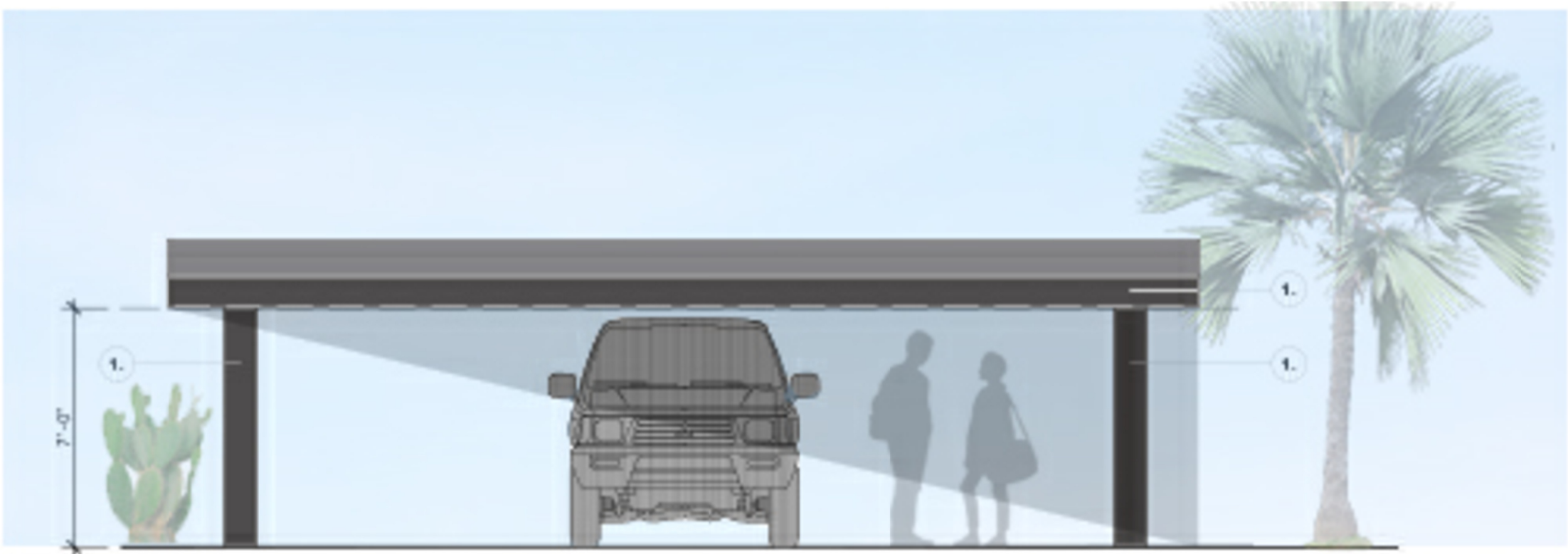
Scale: 1/2" = 1'-0"

MATERIAL KEY

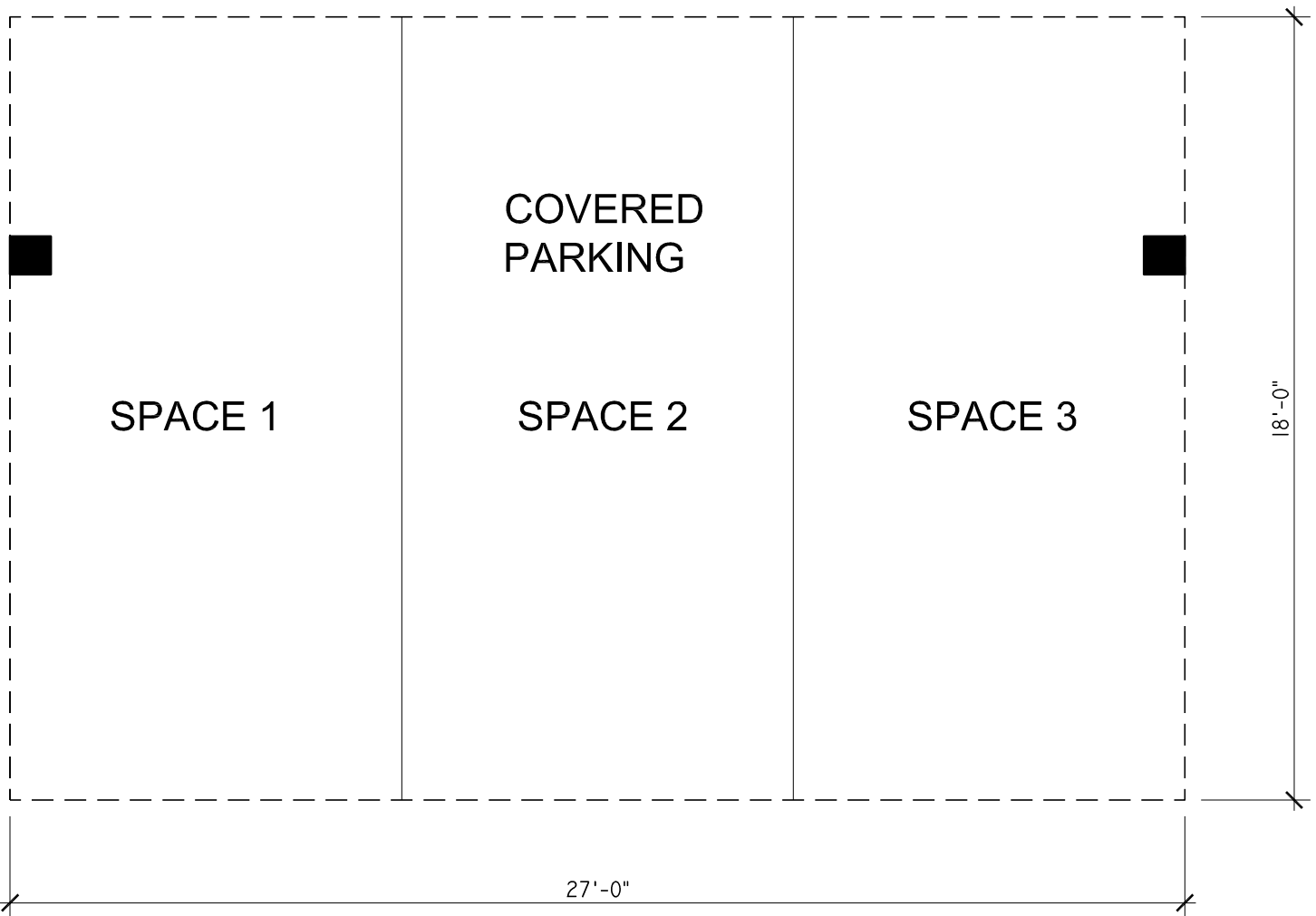
1. STEEL FRAME,
COLOR - DARK GREY



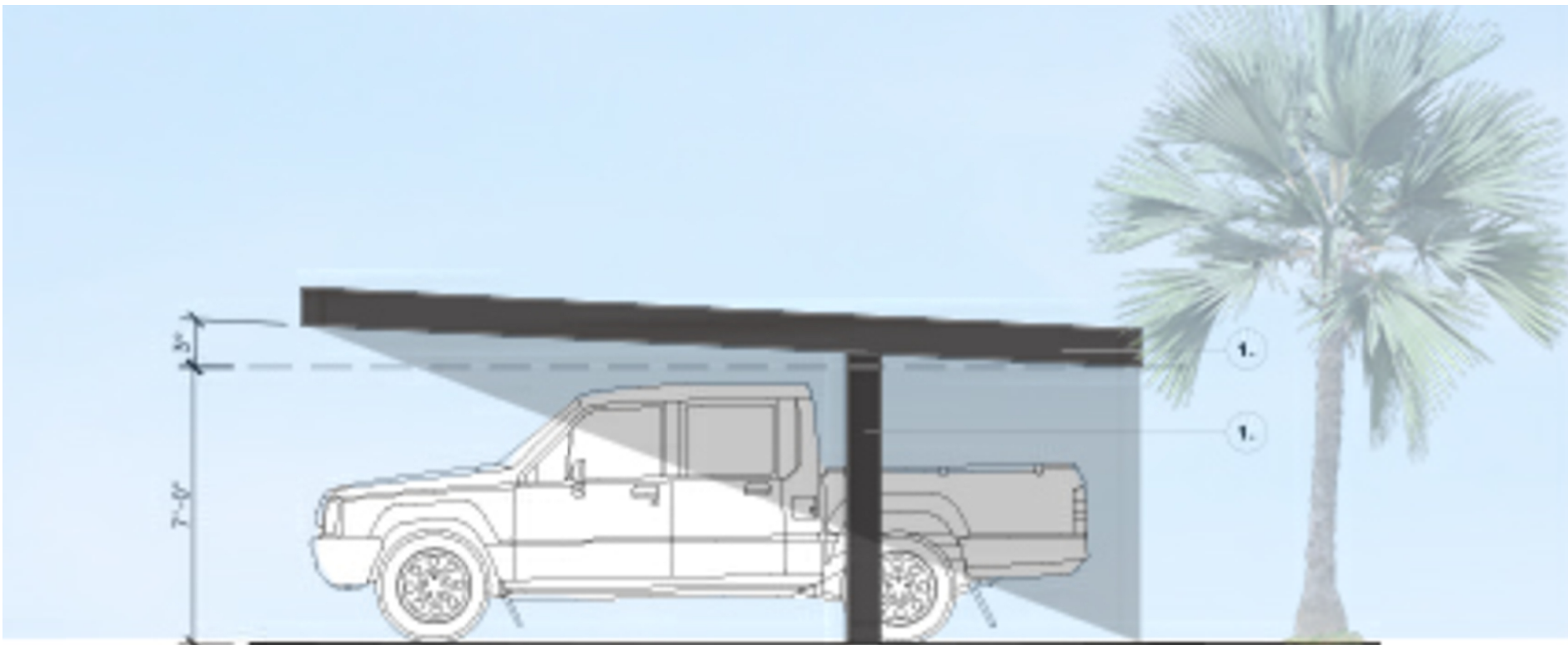
FRONT ELEVATION
Scale 1/4



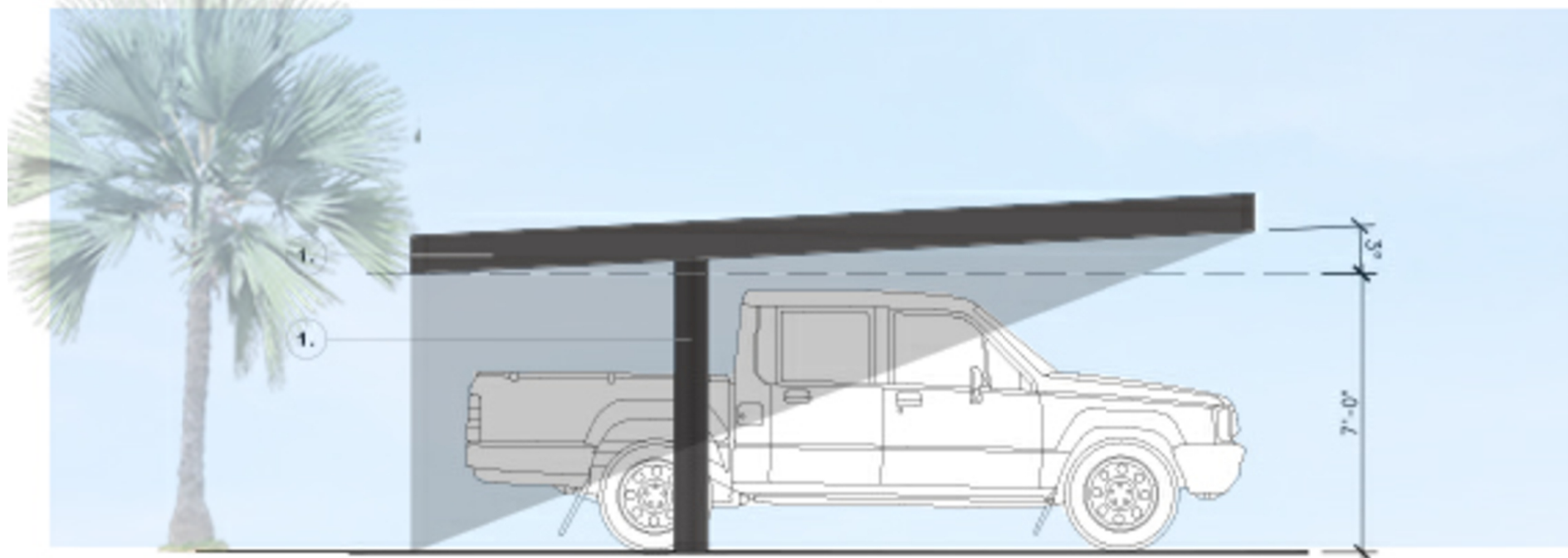
REAR ELEVATION
Scale 1/4



FIRST FLOOR PLAN
Scale 1/4



SIDE ELEVATION 1
Scale 1/4



SIDE ELEVATION 2
Scale 1/4



The Jackson

D - 006 Parking Cover

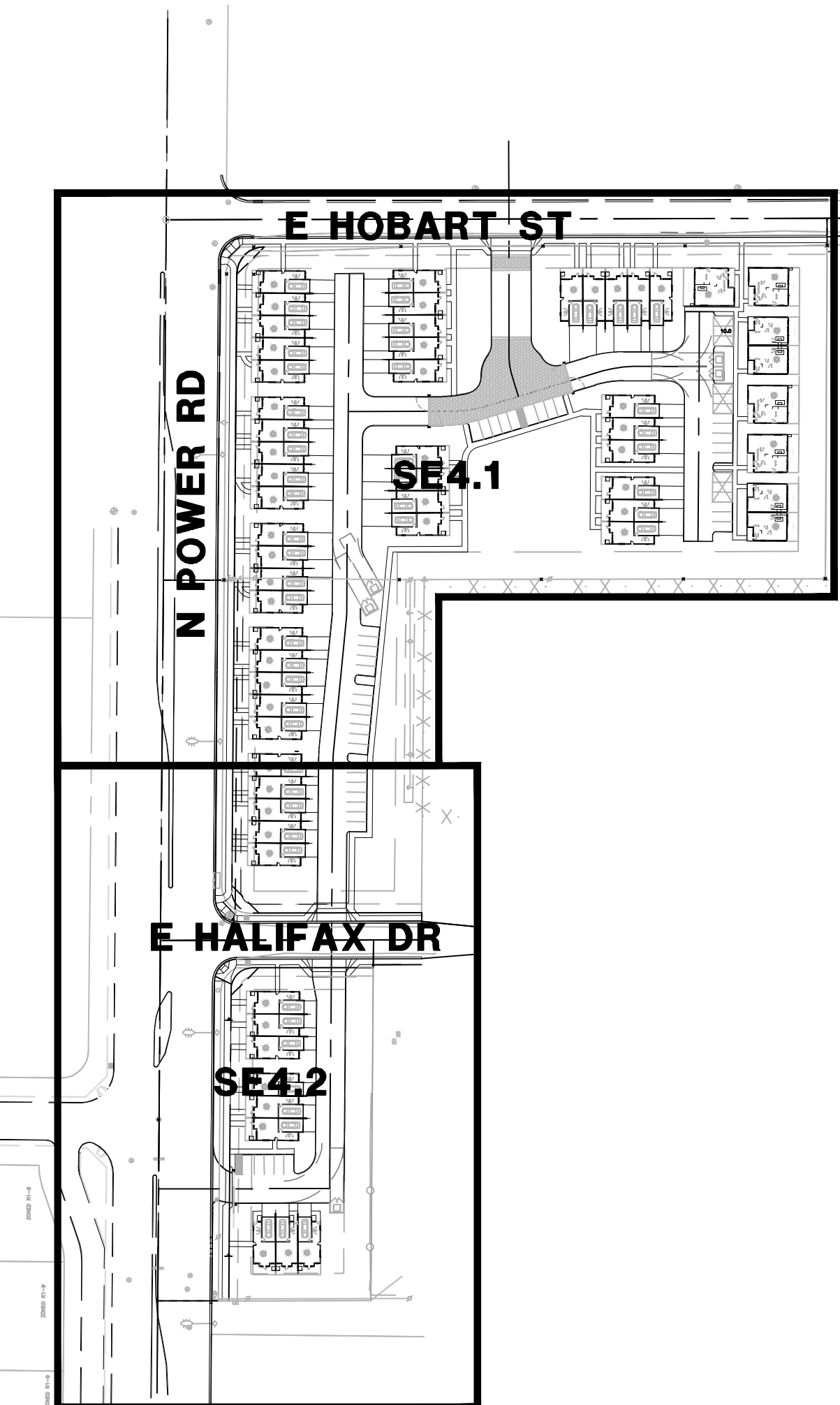
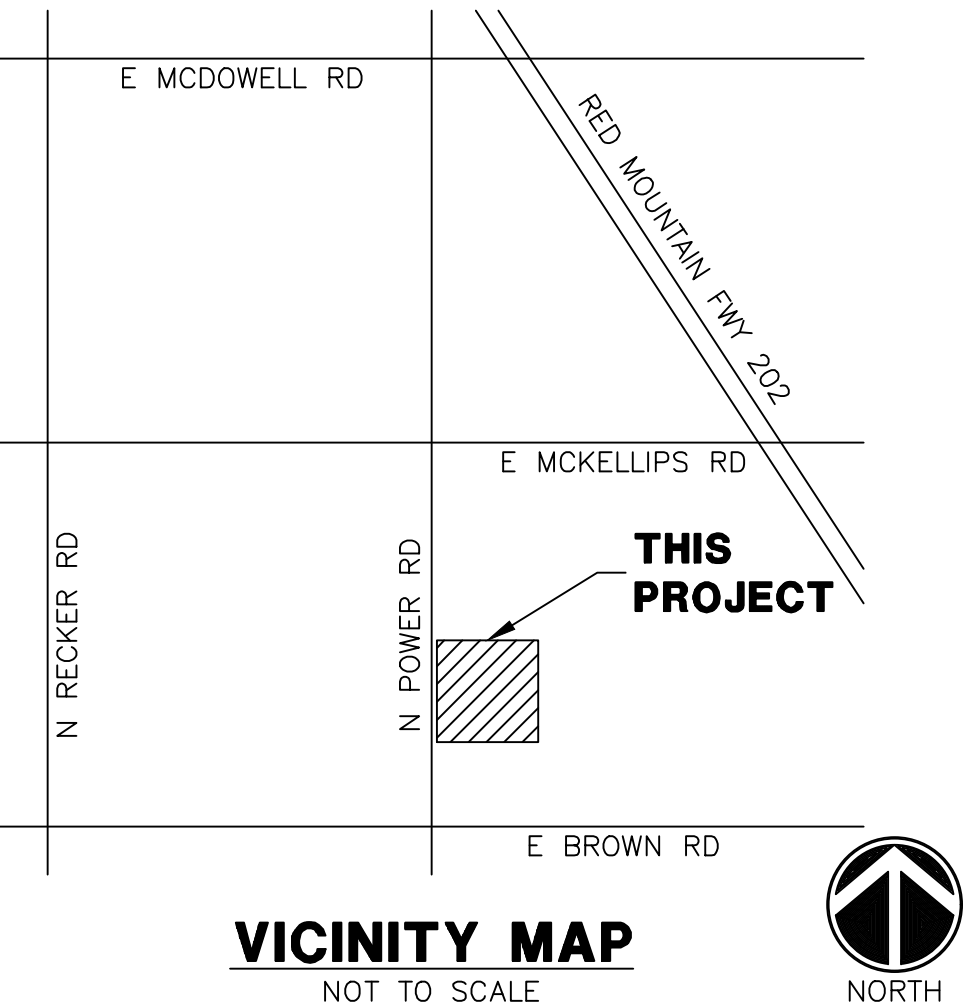
Project number
Date
Drawn by
3654 N. Power Rd Ste. 164
Mesa, Arizona 85215
P 800 839 6027
F 800 839 1426
info@staarchitecture.com

THE JACKSON SITE ELECTRICAL MESA, ARIZONA

GENERAL ELECTRICAL NOTES

1. ELECTRICAL WORK SHALL COMPLY WITH THE NATIONAL ELECTRIC CODE (LATEST EDITION), FEDERAL, STATE AND LOCAL JURISDICTION CODES.
2. ALL WORK SHALL BE DONE IN A NEAT, WORKMANLIKE, FINISHED AND SAFE MANNER, ACCORDING TO THE LATEST PUBLISHED NATIONAL ELECTRICAL CONTRACTORS ASSOCIATION STANDARDS OF INSTALLATION, UNDER COMPETENT SUPERVISION.
3. VISIT THE SITE PRIOR TO BIDDING TO BECOME FAMILIAR WITH EXISTING CONDITIONS AND ALL OTHER FACTORS WHICH MAY AFFECT THE EXECUTION OF THIS WORK. INCLUDE ALL RELATED COSTS IN THE INITIAL BID PROPOSAL.
4. CONTRACTOR IS RESPONSIBLE FOR VERIFYING LOCATIONS OF ALL EXISTING UTILITIES AND AVOIDING DAMAGE TO SAME. CONTRACTOR TO CALL 811 FOR BLUE STAKE. FOR ALL MUNICIPAL OR PRIVATELY OWNED UTILITIES EXISTING WITHIN LIMITS OF WORK OF PROJECT, CONTRACTOR TO PRIVATELY LOCATE UTILITIES. IRRIGATION LINES LESS THAN 2" WILL NOT TYPICALLY BE MARKED AND CAUTION SHOULD BE USED TO AVOID DAMAGE. CONTRACTOR SHALL BE RESPONSIBLE FOR DAMAGE TO ALL UTILITIES CAUSED AS A RESULT OF CONTRACT WORK, ALL DAMAGES TO BE REPAIRED IN KIND.
5. CONTRACTOR SHALL BE RESPONSIBLE FOR DAMAGE TO EXISTING WALKS, WALLS, DRIVES, CURBS, ETC. DAMAGES SHALL BE REPAIRED BY THE CONTRACTOR TO THE SATISFACTION OF THE OWNER AT NO ADDITIONAL COST TO THE OWNER.
6. PROPER PROTECTION OF THE CONSTRUCTION AREA FOR SAFETY SHALL BE THE RESPONSIBILITY OF THE CONTRACTOR. COVER ALL TRENCHES AT THE END OF EACH WORK DAY. BARRICADES SHALL BE INSTALLED AS DIRECTED BY THE OWNER OR THE PROJECT INSPECTOR. THE SITE AND ALL WORK SHALL CONFORM TO OSHA REQUIREMENTS.
7. ALL EXISTING LANDSCAPE, HARDSCAPE AND SPRINKLER SYSTEMS DAMAGED OR DISTURBED DURING THE CONSTRUCTION OF THIS PROJECT BY THE CONTRACTOR SHALL BE REPLACED IN KIND.
8. CONTRACTOR SHALL PAY FOR PERMITS AND INSPECTIONS AS MAY BE REQUIRED AND PROVIDE A CERTIFICATE OF INSPECTION TO THE OWNER.
9. PROTECT ALL MATERIAL AND EQUIPMENT INSTALLED AGAINST DAMAGE BY OTHER TRADES, WEATHER CONDITIONS OR ANY OTHER CAUSES. EQUIPMENT FOUND DAMAGED OR IN OTHER THAN NEW CONDITION WILL BE REJECTED AS DEFECTIVE. ALL COMPONENTS SHALL BE FREE OF DUST, GRIT AND FOREIGN MATERIALS, AND LEFT AS NEW BEFORE FINAL ACCEPTANCE OF WORK.
10. LEAVE THE SITE CLEAN, REMOVE ALL DEBRIS, EMPTY CARTONS, TOOLS, CONDUIT, WIRE, SCRAPS AND ALL MISCELLANEOUS SPARE EQUIPMENT AND MATERIALS USED IN THE WORK DURING CONSTRUCTION.
11. ALL UNDERGROUND CONDUIT SHALL BE SCHEDULE 40 PVC, BURIED 24" MINIMUM BELOW FINISHED GRADE, UNLESS SPECIFICALLY NOTED OTHERWISE ON PLANS OR IN DETAILS.
12. PROVIDE EMT INDOOR AND GRS OUTDOOR FOR ABOVE GROUND CONDUIT. WHERE METALLIC CONDUITS COME IN CONTACT WITH DIRT, THEY SHALL BE HALF LAP WRAPPED WITH SCOTCH 50 TAPE TO 12" AFG. FITTINGS SHALL BE STEEL, THREADED TYPE WITH INSULATED THROATS. SECURELY ATTACH ALL SURFACE MOUNTED CONDUIT EVERY 10 FEET AND WITHIN 3 FEET OF EACH JUNCTION BOX, PER NEC ARTICLE 344.30.
13. MINIMUM CONDUIT SIZE SHALL BE 3/4" UNLESS SPECIFICALLY NOTED OTHERWISE ON PLANS OR IN DETAILS.
14. ALL FEEDERS AND BRANCH CIRCUIT WIRE SHALL BE COPPER TYPE XHHW (75 DEGREE C) FOR BELOW GRADE INSTALLATIONS (AND CONDUIT RISERS) AND THHN/THWN (75 DEGREE C) FOR ABOVE GRADE INSTALLATIONS. MINIMUM SIZE SHALL BE #12 AWG, UNLESS SPECIFICALLY NOTED OTHERWISE ON PLANS OR IN DETAILS. ALL WIRING SHALL BE IN CONDUIT. FOR NEW WIRING IN COMMERCIAL APPLICATIONS, THE USE OF TYPES NMC, NMB, (ROMEX) CABLES IS NOT PERMITTED.
15. A SEPARATE GREEN INSULATED EQUIPMENT GROUNDING CONDUCTOR (BOND) SHALL BE INSTALLED WITHIN EACH RACEWAY, INCLUDING WITHIN EMT CONDUIT. THIS CONDUCTOR SHALL BE SIZED PER NEC CODE. WITHIN EMT CONDUIT, THIS CONDUCTOR SHALL BE SIZED PER NEC TABLE 250.122.
16. WHEN A PANEL IS SUPPLIED BY A FEEDER OR BRANCH CIRCUIT, ANY INSTALLED GROUNDING CONDUCTOR SHALL NOT BE CONNECTED TO THE EQUIPMENT GROUNDING CONDUCTOR (GEC) OR TO THE GROUNDING ELECTRODE(S) PER NEC ARTICLE 250.32(b).
17. BOND ALL ENCLOSURES PER NEC ARTICLE 250.96.
18. CONTRACTOR SHALL PROVIDE ALL LABOR, MATERIAL, ETC. NECESSARY FOR A COMPLETE AND WORKABLE ELECTRICAL SYSTEM WHETHER OR NOT THESE ITEMS ARE SPECIFICALLY NOTED ON THESE DRAWINGS. INCIDENTAL ITEMS NOT INDICATED ON THE DRAWINGS, NOR MENTIONED IN SPECIFICATIONS THAT CAN BE LEGITIMATELY AND REASONABLY INFERRED TO BELONG TO THE WORK DESCRIBED OR BE NECESSARY IN GOOD PRACTICE TO PROVIDE A COMPLETE SYSTEM, SHALL BE FURNISHED AND INSTALLED AS THOUGH ITEMIZED HERE IN EVERY DETAIL.
19. CONTRACTOR IS RESPONSIBLE FOR AND SHALL PROVIDE ALL LABOR, MATERIAL, TRENCHING, CONDUIT, TRANSFORMER PAD AND OTHER REQUIRED EQUIPMENT PER UTILITY COMPANY PLANS AND SPECIFICATIONS NECESSARY FOR A COMPLETE UNDERGROUND CONDUIT SYSTEM FROM THE UTILITY POINT OF SERVICE TO THE UTILITY CO. TRANSFORMER AND FROM THE UTILITY CO. TRANSFORMER TO THE ELECTRICAL SERVICE ENTRANCE SECTION.
20. ALL TRENCHING, CONDUITS, ETC. SHALL BE ROUTED AND INSTALLED IN SUCH A MANNER THAT WILL NOT DAMAGE EXISTING FACILITIES. SHOULD DAMAGE OCCUR, IT WILL BE THE CONTRACTORS RESPONSIBILITY TO REPAIR DAMAGE TO THE SATISFACTION OF THE OWNER OR INSPECTOR.
21. ALL CONDUIT RUNS SHOWN ON THIS PLAN ARE SCHEMATIC IN NATURE. THE CONTRACTOR SHALL MAKE SURE THAT ALL CONDUIT, ETC. FALLS WITHIN THE CONSTRUCTION AREA/RIGHT OF WAY. (THIS INCLUDES MAINTAINING ALL REQUIRED CLEARANCES.)
22. WHEN CROSSING PATHWAYS OR SIDEWALKS, CONTRACTOR SHALL BORE UNDER EXISTING CONCRETE WALKS AND SAWCUT ASPHALT WALKS. ASPHALT WALKS SHALL BE REPLACED IN KIND.
23. CONTRACTOR SHALL GUARANTEE WORK INSTALLED UNDER THE CONTRACT TO BE FREE FROM DEFECTIVE WORKMANSHIP AND MATERIALS, USUAL WEAR EXCEPTED, AND SHOULD ANY SUCH DEFECTS DEVELOP WITHIN A PERIOD OF ONE YEAR AFTER ACCEPTANCE OF THE PROJECT BY THE OWNER, THE CONTRACTOR SHALL REPAIR AND/OR REPLACE ANY DEFECTIVE ITEMS AND DAMAGE RESULTING FROM FAILURE OF THESE ITEMS, AT NO EXPENSE WHATSOEVER TO THE OWNER.
24. CONTRACTOR SHALL IDENTIFY SERVICE ENTRANCE SECTION MAIN SERVICE DISCONNECT(S) WITH 3/32-INCH THICK LAMINATED PHENOLIC TYPE NAMEPLATES WITH 1/4-INCH MINIMUM HEIGHT LETTERS. NAMEPLATE TO BE BLACK MATTE FINISH SURFACE WITH WHITE LETTER ENGRAVING. ATTACH NAMEPLATE TO THE OUTSIDE PANEL FACE WITH TWO STAINLESS STEEL SELF-TAPPING SCREWS. NAMEPLATE SHALL READ "SERVICE DISCONNECT" PER NEC ARTICLE 230.70(b).
25. ALL CIRCUITS SHALL BE LEGIBLY IDENTIFIED AT THE PANEL, JUNCTION BOXES AND AT ALL EQUIPMENT IN A PERMANENT MANNER (I.E. ETCHED PLATES, CONDUCTOR TAG, PERMANENT MARKER, ETC.). THE LABELING SHALL INCLUDE PANEL CIRCUIT NUMBER, "TO" AND "FROM" IDENTIFICATION, AND MARKED "SPARE" WHERE APPLICABLE.
26. CONTRACTOR SHALL TEST ELECTRICAL SYSTEM FOR SHORT CIRCUITS AND MEGGER TEST FEEDER CIRCUIT WIRING. PROVIDE CERTIFIED TEST RESULTS FOR MEGGER TEST TO OWNER UPON COMPLETION OF PROJECT.

- ALL CONDUIT SHOWING SHALL BE CONCEALED WHEN POSSIBLE. WHEN NOT POSSIBLE, CONDUIT MAY BE SURFACE MOUNTED WITH PERMISSION OF THE OWNER OR OWNER'S REPRESENTATIVE.
- CONTRACTOR SHALL COORDINATE ALL EQUIPMENT CONNECTIONS WITH EQUIPMENT SUPPLIER PRIOR TO ROUGH-IN. PROVIDE ADDITIONAL FUSED DISCONNECT SWITCHES AND CONTROLS IF OVERCURRENT PROTECTION OR CONTROLS IS NOT INTEGRAL WITH UNITS.
- ALL EQUIPMENT SHALL BE FUSE SIZED PER MANUFACTURERS RECOMMENDATIONS AND BEAR U.L. APPROVAL. COORDINATE WITH ENGINEER/OWNER.
- ELECTRICAL DEVICES, DISCONNECT SWITCHES, ETC., SHALL BE SUPPORTED INDEPENDENT OF AND ISOLATED FROM EQUIPMENT VIBRATIONS.
- ALL OUTDOOR ELECTRICAL EQUIPMENT SHALL BE NEMA-3R OR NEMA-4 ENCLOSURES.
- ALL POLE LIGHTS SHALL BE PROVIDED WITH A TWO POLE FUSE HOLDER BUSSMANN #HEX OR A SINGLE POLE FUSE HOLDER BUSSMANN #HEB OR EQUAL FOR INLINE FUSING, PROVIDE 5 AMP FUSING IN FUSEHOLDER.
- MATERIALS SHALL BE NEW AND OF THE BEST QUALITY WITH MANUFACTURER'S NAME PRINTED THEREON. MATERIALS SHALL BE MANUFACTURED IN ACCORDANCE WITH NEMA, ANSI, UNDERWRITER'S LABORATORY OR OTHER APPLICABLE STANDARDS AND RATED FOR HEAVY DUTY SERVICE.
- ALL WIRING DEVICES SHALL BE SPECIFICATION GRADE. ALL 15 AND 20 AMP, 125 AND 250 VOLT, NONLOCKING RECEPTACLES INSTALLED OUTDOORS SHALL BE LISTED WEATHER-RESISTANT TYPE. RECEPTACLE COVERS IN WET LOCATIONS SHALL BE EXTRA DUTY PER NEC 406.9(B). ALL WEATHERPROOF WHILE IN-USE RECEPTACLE COVERS SHALL BE METAL.
- SELECTION OF MATERIALS SHALL BE IN STRICT ACCORDANCE WITH THE DRAWINGS AND/OR SPECIFICATIONS. THE USE OF MANUFACTURER'S NAME, MODEL, AND NUMBER IS INTENDED TO ESTABLISH STYLE, QUALITY, APPEARANCE, USEFULNESS AND BID PRICE. CONTRACTOR SHALL SUBMIT TO THE OWNER OR OWNER'S REPRESENTATIVE FOR REVIEW AND APPROVAL (PRIOR TO ORDERING MATERIALS) COPIES OF EQUIPMENT SHOP DRAWINGS AS FOLLOWS: LIGHT FIXTURES, POLES, POLE BASES, SERVICE ENTRANCE SECTION, ELECTRICAL EQUIPMENT, DISCONNECT SWITCHES, TIME CLOCKS AND OTHER CONTROLS, LIGHTING CONTACTORS AND PULL BOXES. AT THE TIME OF EACH SUBMITTAL, THE CONTRACTOR SHALL DEFINE AND DELINEATE IN WRITING ANY DEVIATIONS FROM THE CONTRACT DOCUMENTS. THE REVIEW WILL BE ONLY FOR CONFORMANCE WITH THE DESIGN CONCEPT OF THE WORK AND FOR COMPLIANCE WITH THE INFORMATION CONTAINED IN THE CONTRACT DOCUMENTS. THE REVIEW OF A SPECIFIED ITEM AS SUCH, WILL NOT INCLUDE REVIEW OF THE ASSEMBLY IN WHICH THE ITEM FUNCTIONS. REVIEW BY THE OWNER OR OWNER'S REPRESENTATIVE WILL NOT RELIEVE THE CONTRACTOR FROM RESPONSIBILITY FOR ANY ERRORS OR OMISSIONS IN THE SUBMITTALS NOR FROM HIS RESPONSIBILITY FOR COMPLYING WITH THE CONTRACT DOCUMENTS.
- THE SUBMITTALS SHALL BE NEATLY GROUPED AND ORGANIZED. PERTINENT INFORMATION SHALL BE HIGHLIGHTED, AND THE SPECIFIC PRODUCT SHALL BE IDENTIFIED. ALL SUBMITTALS SHALL BE COMPLETE, AND PRESENTED IN ONE PACKAGE. THE SUBMITTAL SHALL INCLUDE A COMPLETE LIST OF THE EQUIPMENT AND MATERIALS, INCLUDING THE MANUFACTURER'S NAME, PRODUCT SPECIFICATION, DESCRIPTIVE DATA, TECHNICAL LITERATURE, PERFORMANCE CHARTS, CATALOG CUTS, INSTALLATION INSTRUCTIONS, AND SPARE PART RECOMMENDATIONS FOR EACH DIFFERENT ITEM OF THE EQUIPMENT SPECIFIED.



KEY MAP

NO SCALE

WRIGHT ENGINEERING
PROJECT NO:
21320

DESIGN BY: JGW
DRAWN BY: JGW
CHECKED BY:

WRIGHT
engineering corporation
ELECTRICAL ENGINEERING AND DESIGN
165 EAST CHILTON DRIVE • CHANDLER, ARIZONA 85225
PHONE 480.497.5829 • FAX 480.497.5807
www.wrightengineering.us

PROJECT: TITLE

**THE JACKSON
N POWER RD & E BROWN RD
SITE ELECTRICAL COVER SHEET**

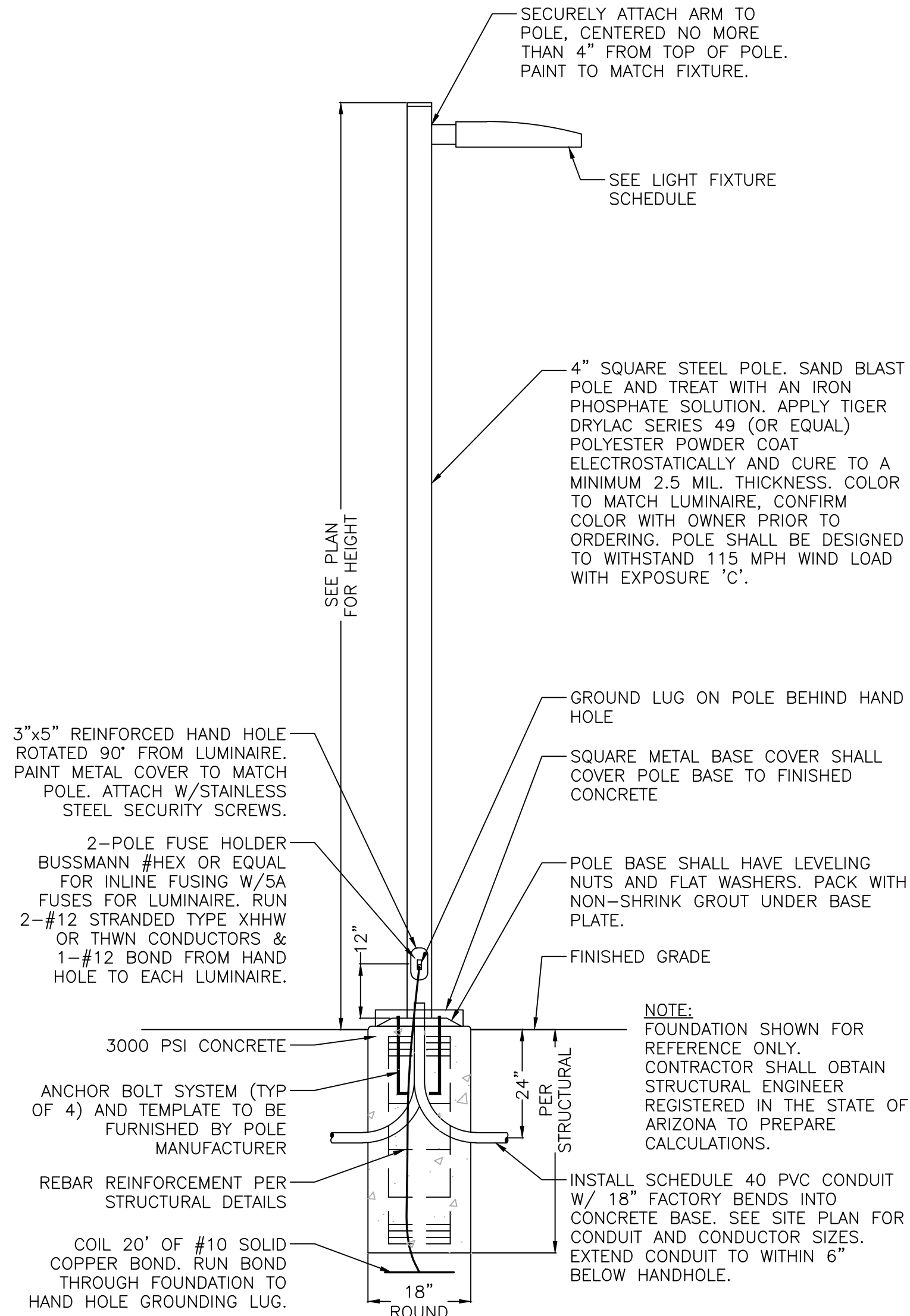
NO.	DATE	SUBMITTALS/REVISIONS (DESCRIPTIONS)
1	5/26/22	30% PLAN SUBMITTAL
2	7/22/22	30% REDLINES
3	8/22/22	30% REDLINES
4	9/26/22	DRB SUBMITTAL

PRELIMINARY
NOT FOR
CONSTRUCTION

DRAWING NO:

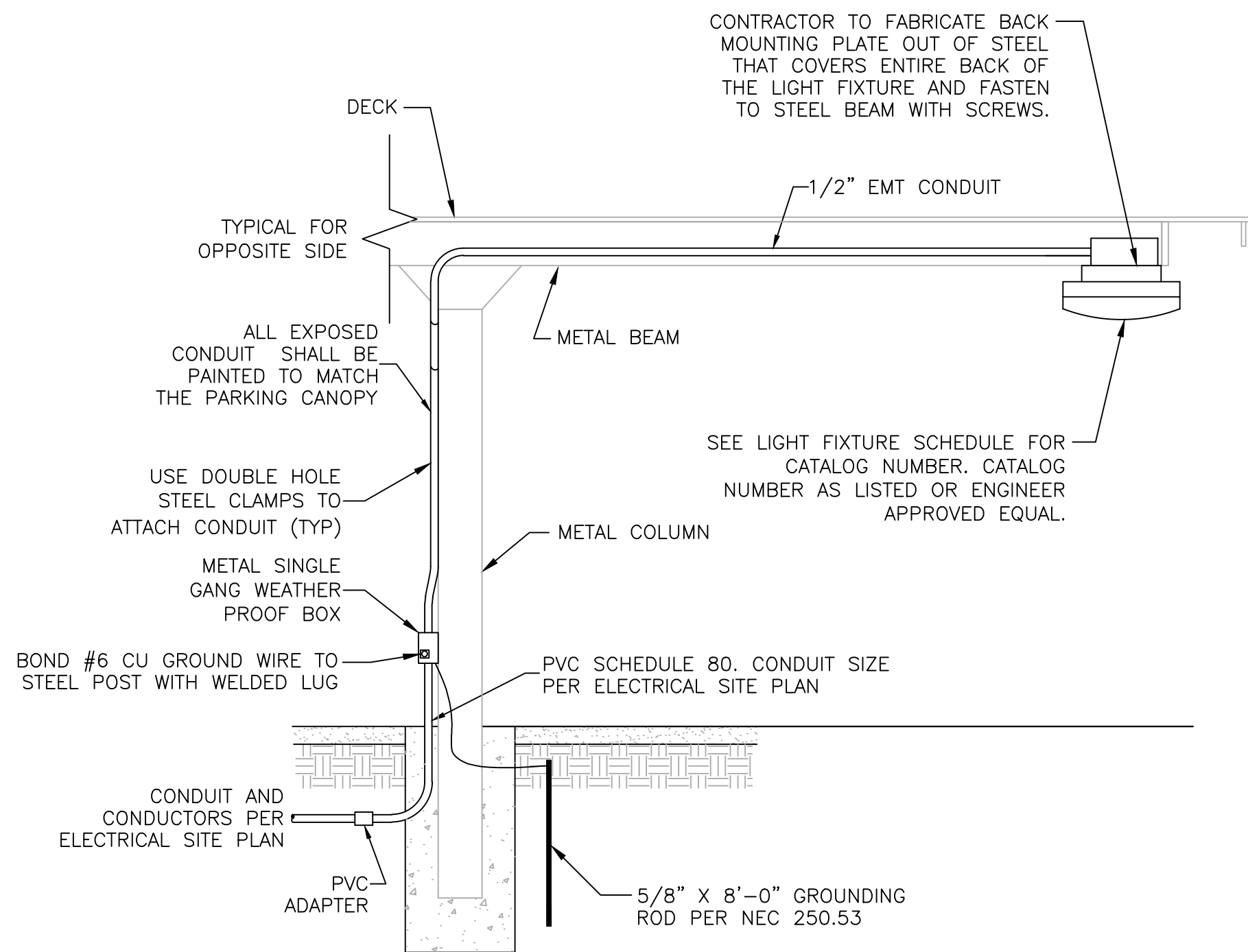
SE1.
OF 4

THESE DRAWINGS AND SPECIFICATIONS ARE THE SOLE PROPERTY OF WRIGHT ENGINEERING CORPORATION AND MAY NOT BE REPRODUCED OR MODIFIED FOR ANY USE WITHOUT THE EXPRESS WRITTEN PERMISSION OF WRIGHT ENGINEERING CORPORATION.
H:\2021\21320-The Jackson SE\21320-SE-The Jackson.dwg



1 FLUSH FOUNDATION AREA LIGHT DETAIL

NO SCALE



3 PARKING STRUCTURE LIGHT INSTALLATION DETAIL

NO SCALE

Project

Catalog #

Type

Prepared by

Notes

Date



Streetworks

GLAN Galleon II

Area / Site Luminaire

Product Features

- Light Architect™

Interactive Menu

- Ordering Information [page 2](#)
- Mounting Details [page 3](#)
- Optical Distributions [page 4](#)
- Product Specifications [page 5](#)
- Energy and Performance Data [page 6](#)
- Control Options [page 10](#)

Product Certifications

- ETL
- DLC
- 30 VIB
- IP66
- UL
- YEAR
- SAA

Quick Facts

- Lumen packages range from 3,300 - 73,500 (33W - 552W)
- 16 optical distributions
- Efficacy up to 159 lumens per watt
- Options to meet Buy American and other domestic preference requirements

Dimensional Details

Standard Arm

Number of Light Fixtures	Width "A"	Housing Length "B"	Weight with Standard or 0.5" Arm	CPH with Standard or 0.5" Arm
1-4	14"	22"	29 lb	0.95
5-6	22"	22"	39 lb	0.95
7-9	22"	28-1/8"	48 lb	1.1

Notes:

- For arm extension requirements and additional line art, see Mounting Details section.
- See Certified for 3000 CCT and warmer only.

Notes:

- For arm extension requirements and additional line art, see Mounting Details section.
- See Certified for 3000 CCT and warmer only.

Notes:

- For arm extension requirements and additional line art, see Mounting Details section.
- See Certified for 3000 CCT and warmer only.

PSS00077EN page 1

February 3, 2022 10:20 AM

Project

Catalog #

Type

Prepared by

Notes

Date



Fail-Safe

HVSL2 | HVSL2-SQ | LD4 LED

2" Nominal Width
Vandal Resistant Linear LED
Steel Housing, Polycarbonate Lens

Typical Applications

Starwalks • Schools • Hospitals • Corridors • Dormitories • Public restrooms • Common areas • Transit stations

Product Certification

- ETL
- UL
- YEAR
- SAA

Interactive Menu

- Order Information [page 2](#)
- Product Specifications [page 3](#)
- Nominal Input Watts/Delivered Lumens [page 4](#)
- Product Warranty

Top Product Features

- Narrow 2.5" architectural width
- High Impact Polycarbonate Lens
- Damp Location Standard, Wet Location Optional
- Available in a variety of paint finishes
- Optional NSF Rating
- Up to 4100 Lumens in 4ft length
- Efficacy up to 106 lm/W
- Options to meet Buy American Act requirements

Dimensional and Mounting Details

STRAIGHT SIDE/SQUARE HVSL2-SQ

STANDARD HVSL2

Notes:

- For arm extension requirements and additional line art, see Mounting Details section.
- See Certified for 3000 CCT and warmer only.

Notes:

- For arm extension requirements and additional line art, see Mounting Details section.
- See Certified for 3000 CCT and warmer only.

PSS19210EN page 1

October 10, 2021 10:01 AM

LIGHT FIXTURE SCHEDULE											
SYMBOL	LETTER ID	MANUFACTURER	CATALOG NUMBER	FINISH COLOR	VOLTS	LAMP	LUMENS (MIN)	CCT	MOUNTING HEIGHT	DETAIL	NOTES
	A	COOPER LIGHTING	GLAN-SA1C-730-U-T3-BZ-HSS	BRONZE	120	57W LED	4,757	3000K	15'-0"	PARKING LOT LIGHT SEE DETAIL 1 SHEET SE3.1	
	B	COOPER LIGHTING	BTR6-A3-730-U-T3-42-BZ	BRONZE	120	17W LED	1,482	3000K	3'-6"	PATHWAY BOLLARD SEE DETAIL 2 SHEET SE3.1	
	C	COOPER LIGHTING	HVSL2-4-LD4-STD-30-UNV-O-EDC1-BZ	BRONZE	120	32.7W LED	3,662	3000K	10'-0"	PARKING STRUCTURE LIGHT SEE DETAIL 3 SHEET SE3.1	

Project


Catalog #

Type

Prepared by

Notes

Date



McGraw-Edison

BRT6 Bollard

Round LED Pedestrian Luminaire

Interactive Menu

- Ordering Information [page 2](#)
- Product Specifications [page 2](#)
- Optical Distributions [page 1](#)
- Energy and Performance Data [page 3](#)

Product Certifications

- ETL
- 30 VIB
- IP66
- IK10
- UL
- YEAR
- SAA

Quick Facts

- 4 Optical Distributions
- Available in 30", 36", and 42"
- Lumen packages range from 560 - 4400 (5W - 49W)
- Efficacy up to 122 lumens per watt
- Zero uplight on all configurations

Dimensional Details

Side View

GFI and USB Options

SM2 Option

Top View

CBP Option

Height	Weight
30"	7.25 (3.94kg)
36"	8.75 (3.94kg)
42"	10.25 (4.74kg)

* Base model without options or controls

Notes:

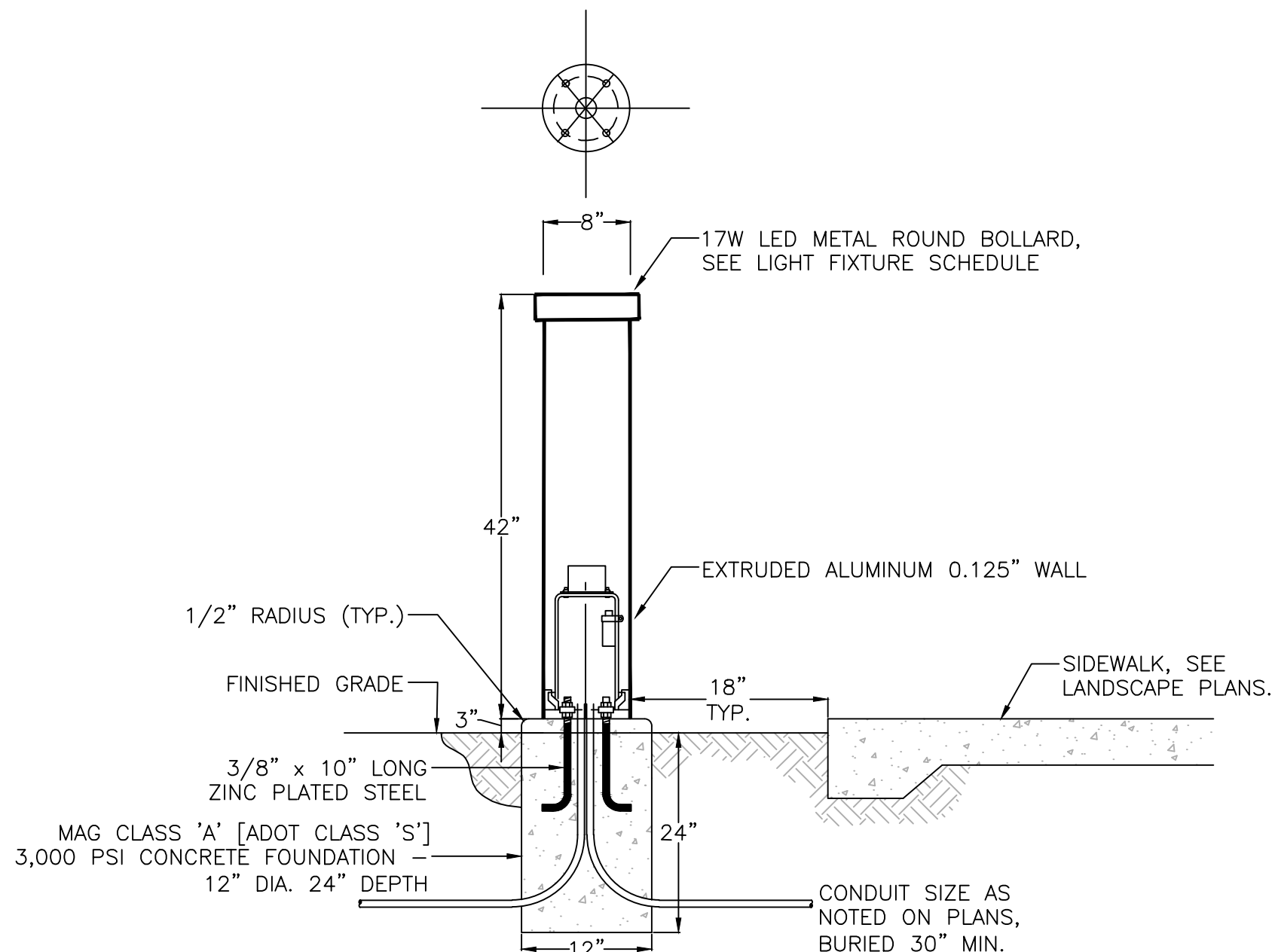
- For arm extension requirements and additional line art, see Mounting Details section.
- See Certified for 3000 CCT and warmer only.

Notes:

- For arm extension requirements and additional line art, see Mounting Details section.
- See Certified for 3000 CCT and warmer only.

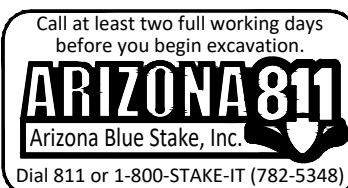
PSS00077EN page 1

April 14, 2022 2:47 PM



2 BOLLARD LIGHT DETAIL

NO SCALE



WRIGHT ENGINEERING
PROJECT NO:
21320
DESIGN BY: JGW
DRAWN BY: JGW
CHECKED BY:

WRIGHT
engineering corporation
ELECTRICAL ENGINEERING AND DESIGN
165 EAST CHILTON DRIVE • CHANDLER, ARIZONA 85225
PHONE 480.497.5829 • FAX 480.497.5807
www.wrightengineering.us

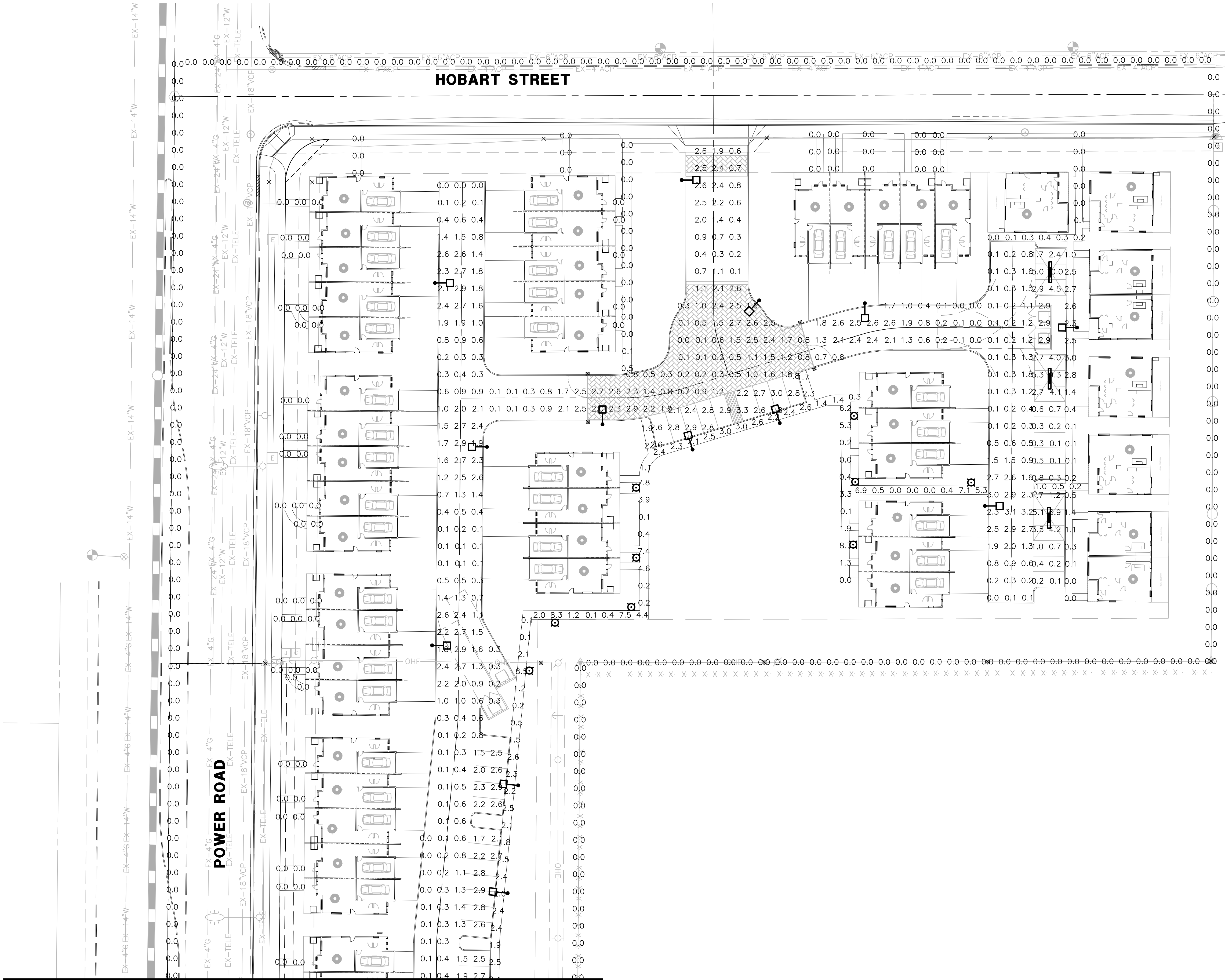
PROJECT: TITLE:
MESA, ARIZONA
THE JACKSON
N POWER RD & E BROWN RD
SITE ELECTRICAL DETAILS

NO.	DATE	SUBMITTALS/REVISIONS (DESCRIPTIONS)
1	5/26/22	30% PLAN SUBMITTAL
2	7/22/22	30% REDLINES
3	8/22/22	30% REDLINES
4	9/26/22	DRB SUBMITTAL

PRELIMINARY
NOT FOR
CONSTRUCTION

DRAWING NO:
SE3.1
OF 4

THESE DRAWINGS AND SPECIFICATIONS ARE THE SOLE PROPERTY OF WRIGHT ENGINEERING CORPORATION AND MAY NOT BE REPRODUCED OR MODIFIED FOR ANY USE WITHOUT THE EXPRESS WRITTEN PERMISSION OF WRIGHT ENGINEERING CORPORATION.
H:\2021\21320-The Jackson SE\21320-SE-The Jackson.dwg



MATCHLINE SEE SHEET SE4.2

PHOTOMETRIC RESULTS

Parking Lot
89 points
HORIZONTAL FOOTCANDLES
Average 2.4
Maximum 10.0
Minimum 0.1
Avg:Min 23.81
Max:Min 100.00
Coef Var 0.70

Refuse Area
7 points
HORIZONTAL FOOTCANDLES
Average 1.4
Maximum 2.9
Minimum 0.2
Avg:Min 6.93
Max:Min 14.50
Coef Var 0.95

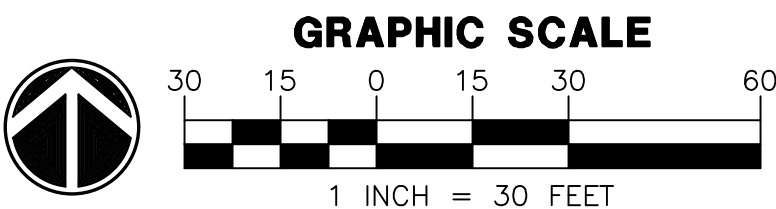
Private Drives
407 points
HORIZONTAL FOOTCANDLES
Average 1.1
Maximum 3.2
Minimum 0.0
Avg:Min N/A
Max:Min N/A
Coef Var 0.82

Pathways
258 points
HORIZONTAL FOOTCANDLES
Average 0.9
Maximum 8.7
Minimum 0.0
Avg:Min N/A
Max:Min N/A
Coef Var 1.84

Spill Light
354 points
HORIZONTAL FOOTCANDLES
Average 0.0
Maximum 0.0
Minimum 0.0
Avg:Min N/A
Max:Min N/A
Coef Var 0.00

PHOTOMETRIC LEGEND

- Pathway Bollard
candela file 'BRT6-A3-730-U-T3-XX-BK.ies'
8 lamp(s) per luminaire, photometry is absolute
Light Loss Factor = 0.910, watts per luminaire = 17
mounting height= 3.5 ft
number locations= 9, number luminaires= 9
kw all locations= 0.2
- Street Light
candela file 'GLAN-SA1C-730-U-T3-HSS_4757 lumens.ies'
16 lamp(s) per luminaire, photometry is absolute
Light Loss Factor = 0.910, watts per luminaire = 108
mounting height= 15 ft
number locations= 19, number luminaires= 19
kw all locations= 2.1
- Parking Structure Light
candela file 'HVS12-4-LD4-STD-30-UNV-O-EDD.ies'
1 lamp(s) per luminaire, photometry is absolute
Light Loss Factor = 0.910, watts per luminaire = 33
number locations= 3, number luminaires= 3
kw all locations= 0.1
Occurrences: 3 at mounting height 0 ft



MESA, ARIZONA

THE JACKSON

N POWER RD & E BROWN RD

PHOTOMETRIC ANALYSIS

NO. DATE SUBMITTALS/REVISIONS (DESCRIPTIONS)

NO.	DATE	SUBMITTALS/REVISIONS (DESCRIPTIONS)
1	5/26/22	30% PLAN SUBMITTAL
2	7/22/22	30% REDLINES
3	8/22/22	30% REDLINES
4	9/26/22	DRB SUBMITTAL

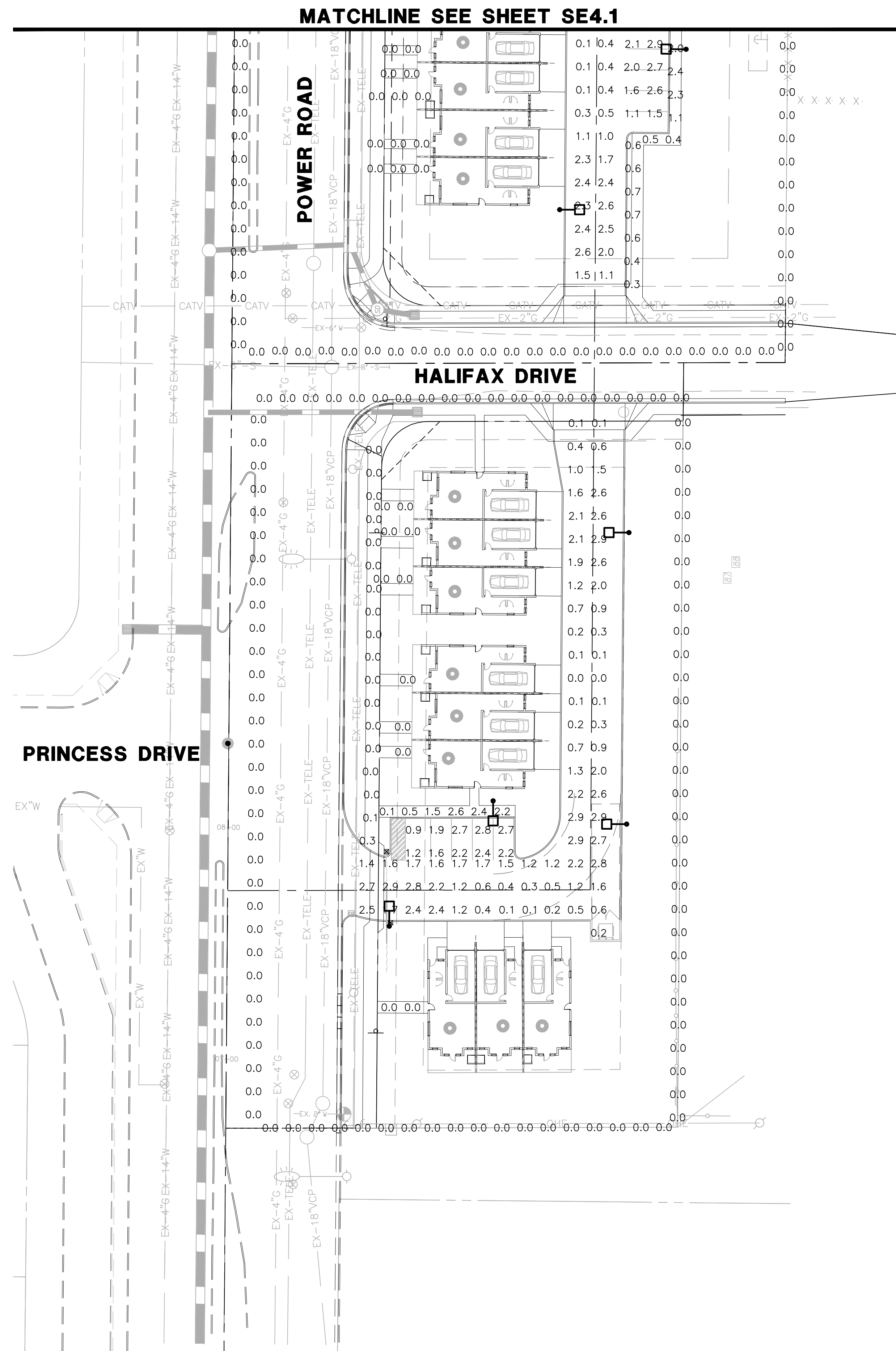
PRELIMINARY
NOT FOR
CONSTRUCTION

DRAWING NO:
SE4.1
OF 4

WRIGHT ENGINEERING
PROJECT NO:
21320
DESIGN BY: JGW
DRAWN BY: JGW
CHECKED BY:

WRIGHT
engineering corporation
ELECTRICAL ENGINEERING AND DESIGN
165 EAST CHILTON DRIVE • CHANDLER, ARIZONA 85225
PHONE 480.497.5829 • FAX 480.497.5807
www.wrightengineering.us

THESE DRAWINGS AND SPECIFICATIONS ARE THE SOLE PROPERTY OF WRIGHT ENGINEERING CORPORATION AND MAY NOT BE REPRODUCED OR MODIFIED FOR ANY USE WITHOUT THE EXPRESS WRITTEN PERMISSION OF WRIGHT ENGINEERING CORPORATION.



PHOTOMETRIC RESULTS

Parking Lot	
89 points	
HORIZONTAL	FOOTCANDLES
Average	2.4
Maximum	10.0
Minimum	0.1
Avg:Min	23.81
Max:Min	100.00
Coef Var	0.70


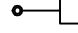

Refuse Area	
7 points	
HORIZONTAL	FOOTCANDLES
Average	1.4
Maximum	2.9
Minimum	0.2
Avg:Min	6.93
Max:Min	14.50
Coef Var	0.95

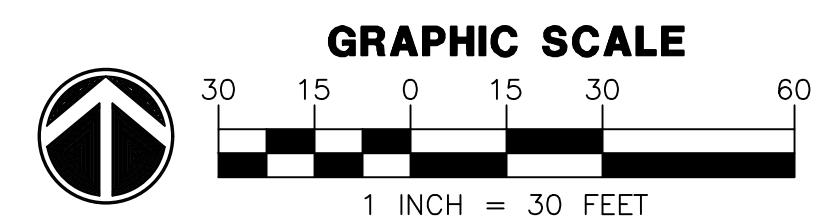
Private Drives	
407 points	
HORIZONTAL	FOOTCANDLES
Average	1.1
Maximum	3.2
Minimum	0.0
Avg:Min	N/A
Max:Min	N/A
Coef Var	0.82

Pathways	
258 points	
HORIZONTAL	FOOTCANDLES
Average	0.9
Maximum	8.7
Minimum	0.0
Avg:Min	N/A
Max:Min	N/A
Coef Var	1.84

Spill Light	
354 points	
HORIZONTAL	FOOTCANDLES
Average	0.0
Maximum	0.0
Minimum	0.0
Avg:Min	N/A
Max:Min	N/A
Coef Var	0.00

PHOTOMETRIC LEGEND

- 
Pathway Bollard
 candelabra file "BRT6-A3-730-U-T3-XX-BK.ies"
 8 lamp(s) per luminaire, photometry is absolute
 Light Loss Factor = 0.910, watts per luminaire = 17
 mounting height= 3.5 ft
 number locations= 9, number luminaires= 9
 kw all locations= 0.2
- 
Street Light
 candelabra file "GLAN-SA1C-730-U-T3-HSS_4757 lumens.ies"
 16 lamp(s) per luminaire, photometry is absolute
 Light Loss Factor = 0.910, watts per luminaire = 108
 mounting height= 15 ft
 number locations= 19, number luminaires= 19
 kw all locations= 2.1
- 
Parking Structure Light
 candelabra file "HVS2L-4-LD4-STD-30-UNV-0-EDD.ies"
 1 lamp(s) per luminaire, photometry is absolute
 Light Loss Factor = 0.910, watts per luminaire = 33
 number locations= 3, number luminaires= 3
 kw all locations= 0.1
 Occurrences: 3 at mounting height 0 ft



Call at least two full working days
before you begin excavation.

ARIZONA 811

Arizona Blue Stake, Inc.

Dial 811 or 1-800-STAKE-IT (782-5348)

WRIGHT ENGINEERING
PROJECT NO:
21320
DESIGN BY: JGW
DRAWN BY: JGW
CHECKED BY:

WRIGHT
engineering corporation
ELECTRICAL ENGINEERING AND DESIGN
165 EAST CHILTON DRIVE • CHANDLER, ARIZONA 85225
PHONE 480.497.5829 • FAX 480.497.5807
www.wrightengineering.us

PROJECT: TITLE:

MESA, ARIZONA
THE JACKSON
N POWER RD & E BROWN RD
PHOTOMETRIC ANALYSIS

NO.	DATE	SUBMITTALS/REVIEWS (DESCRIPTIONS)
1	5/26/22	30% PLAN SUBMITTAL
2	7/22/22	30% REDLINES
3	8/22/22	30% REDLINES
4	9/26/22	DRB SUBMITTAL

PRELIMINARY
NOT FOR
CONSTRUCTION

DRAWING NO:
SE4.2
OF 4