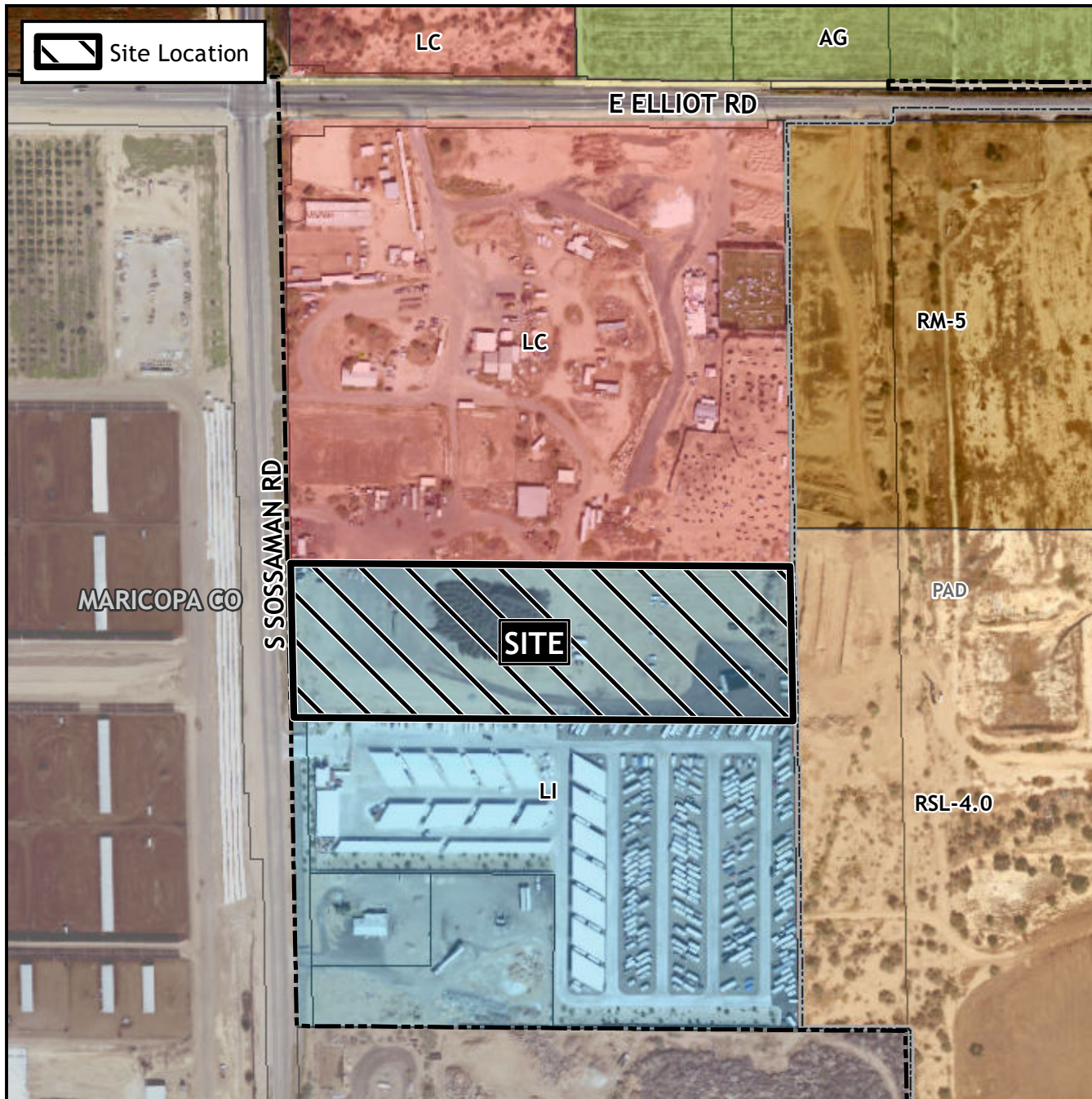


Planning and Zoning Vicinity Map: ZON22-00682



Case Details

CASE:

ZON22-00682

PRE-PLAT : ☐

SITE / ADDRESS:

District 6. Within the 3700 to 3900 blocks of South Sossaman Road (east side). Located south of Elliot Road on the east side of Sossaman Road. (20± acres).

REQUEST:

Rezoning from Light Industrial (LI) to Light Industrial with a Planned Area Development overlay (LI-PAD), Council Use Permit (CUP), and Site Plan Review. This request will allow for the expansion of an existing mini-storage facility with boat and recreational vehicle storage.

