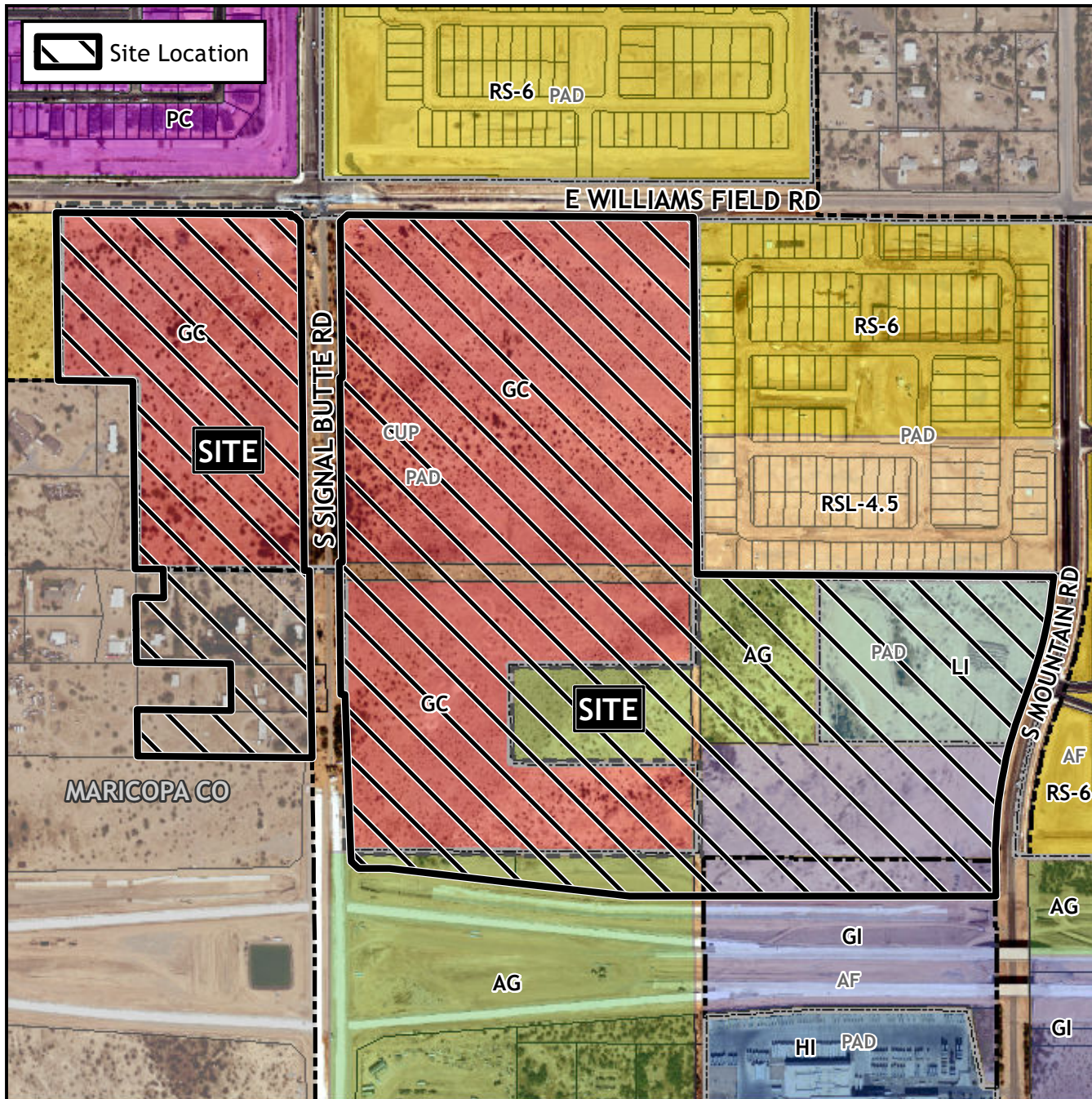


Planning and Zoning Vicinity Map: ZON22-00267



Case Details

CASE:

PRE-PLAT : ☐

ZON22-00267

SITE / ADDRESS:

District 6. Within the 10600 and 11000 blocks of East Williams Field Road (south side) and within the 6200 and 6300 blocks of South Signal Butte Road (both sides). Located south of Williams Field Road on both sides of Signal Butte Road. (122± acres).

REQUEST:

Rezone from Agriculture (AG), Light Industrial with a Planned Area Development overlay (LI-PAD), General Commercial with a Planned Area Development overlay and Council Use Permit (GC-PAD-CUP), and General Industrial (GI) to General Commercial with a Planned Area Development overlay and Council Use Permit (GC-PAD-CUP), and Light Industrial with a Planned Area Development overlay and Council Use Permit (LI-PAD-CUP). (125± acres). This request will allow for the future development of an auto mall, large commercial development, and a multiple residence development.

