



DESIGN REVIEW BOARD

September 13, 2022



DRB22-00721



Request

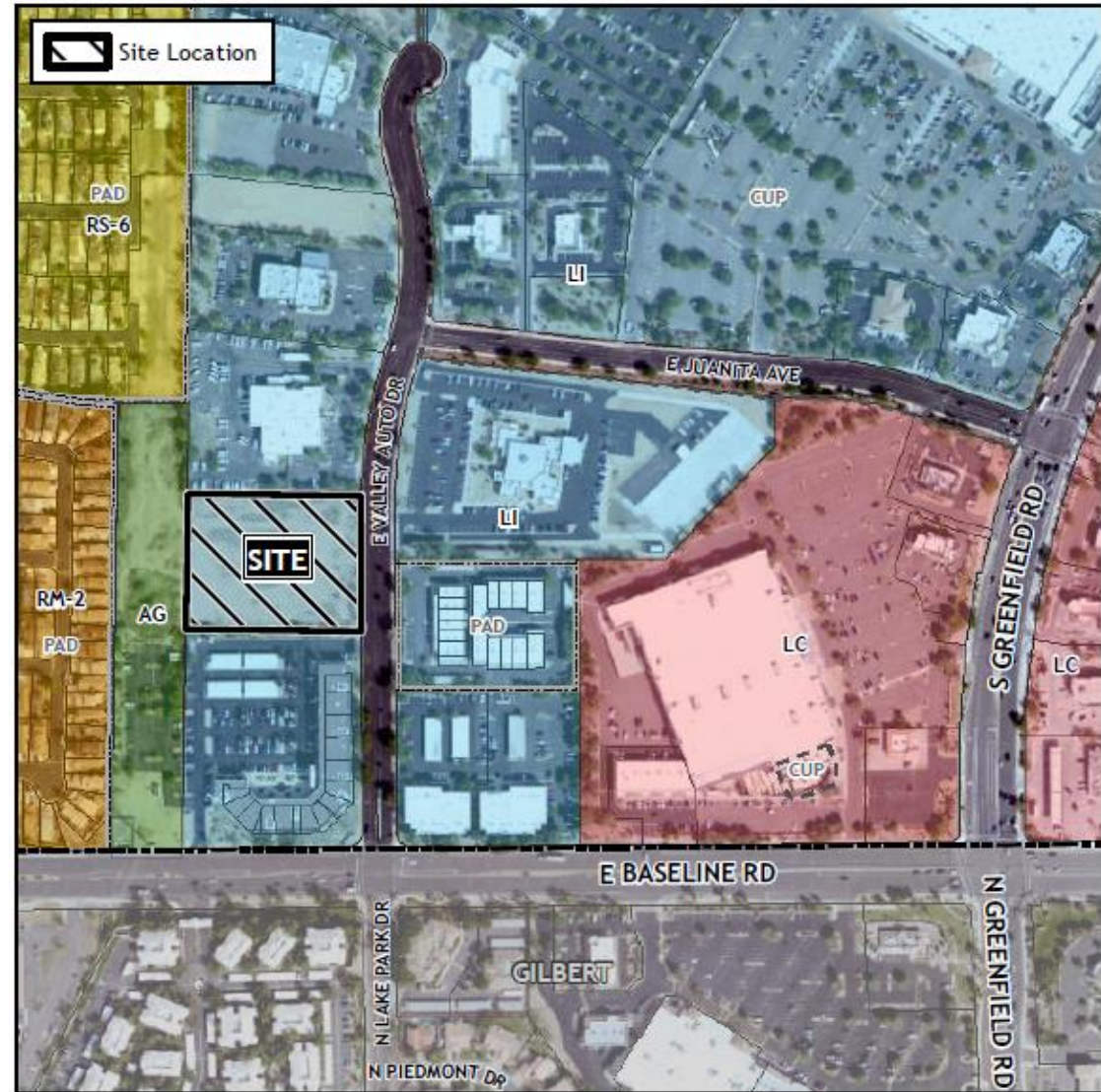
- Design Review

Purpose

- To allow for an industrial development

Location

- West of Greenfield Road
- North of Baseline Road



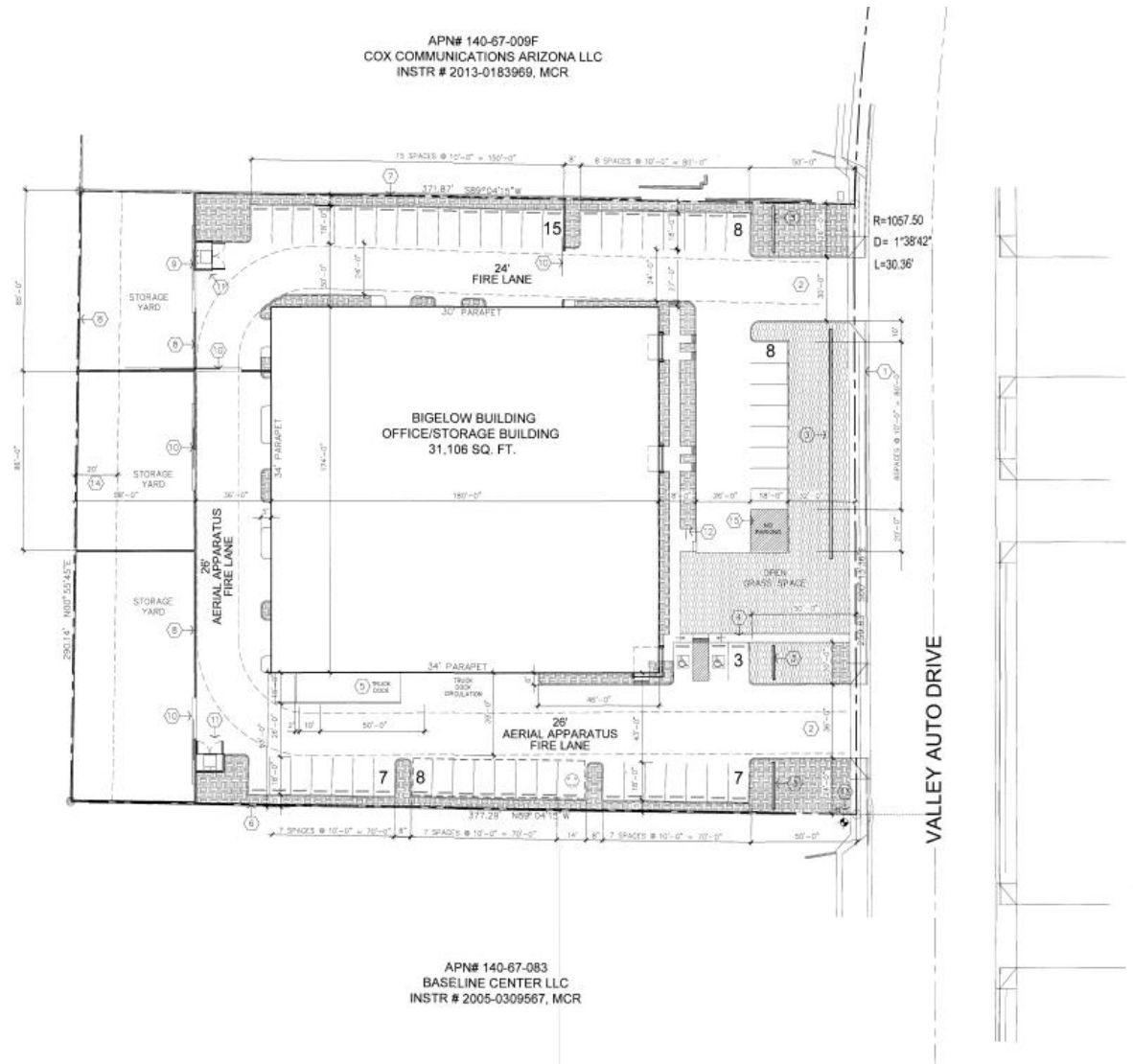
Site Photo

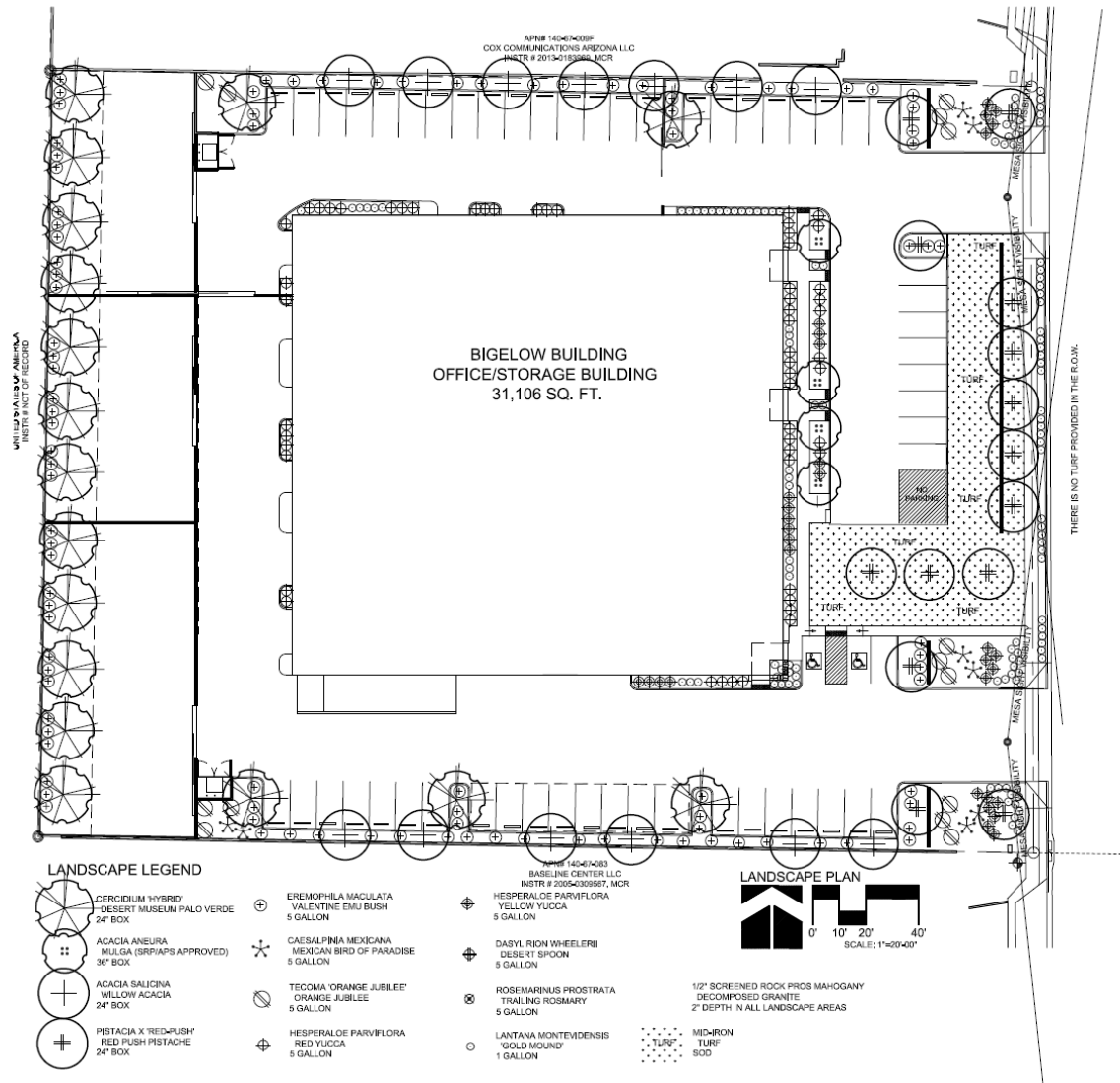


Looking west towards the site from Valley Auto Drive

Site Plan

- One 31,106 s.f. office warehouse building
- 3 contractor storage yards
- Building height: 36 feet
- Access from Valley Auto Drive

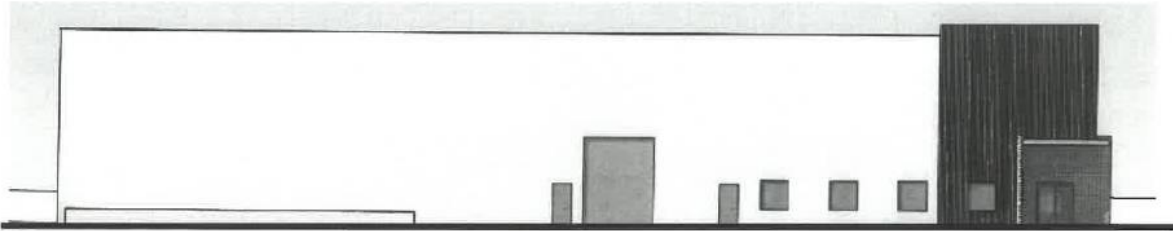




Landscape Plan

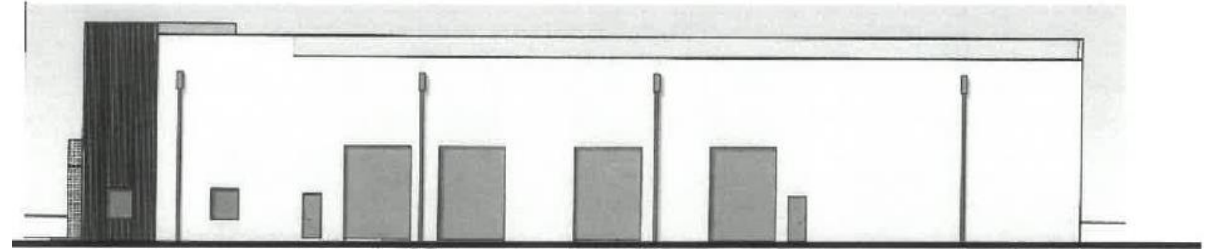
- Desert Museum
- Mulga
- Willow Acacia
- Red Push Pistache

Elevations



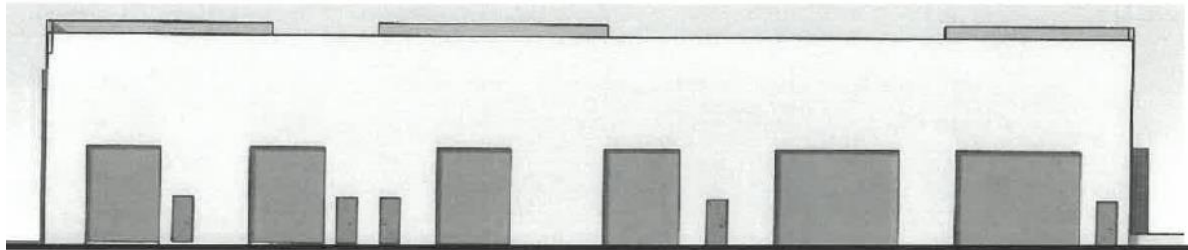
SOUTH ELEVATION

SCALE: 3/32"=1'-0"



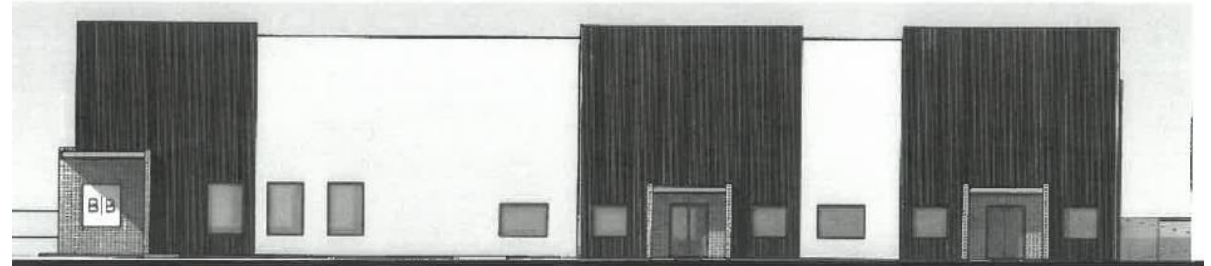
NORTH ELEVATION

SCALE: 3/32"=1'-0"



WEST ELEVATION

SCALE: 3/32"=1'-0"



EAST ELEVATION

Renderings



Renderings



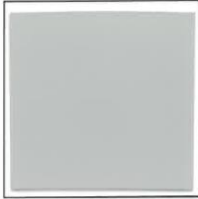
Renderings



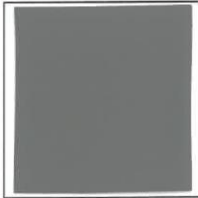
Renderings



FINISH/COLOR SCHEME



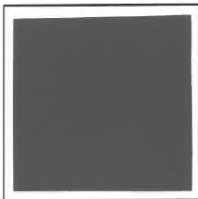
BASE CONCRETE PANEL:
DUNN EDWARDS
COLOR: DE 6367



ACCENT CONCRETE PANEL:
DUNN EDWARDS
COLOR: DE 6369



BRICK
RED W/ WHITE VAINING



METALS
DUNN EDWARDS
COLOR: DE 6370



project:

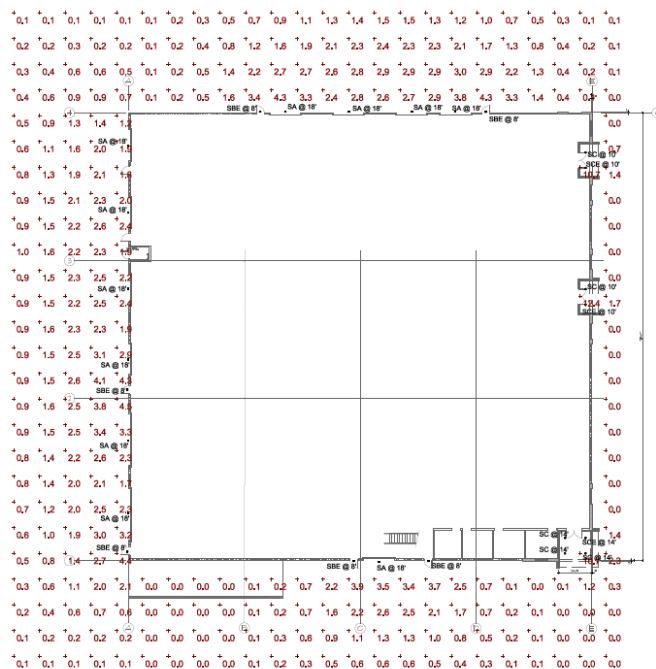
BIGELOW
OFFICE BUILDING
4114 EAST VALLY AUTO DR.
MESA, ARIZONA

job no: 22124





date: 5-26-22

Color and Materials

Lighting


PHOTOMETRIC SITE PLAN
 SCALE: 1"=20'-0"

Statistics						
Description	Symbol	Avg	Max	Min	Max/Min	Avg/Min
Enthalpy Balance	+	1.3 %	13.4 %	0.0 %	N/A	N/A

Schedule										
Symbol	Label	Quantity	Manufacturer	Catalog Number	Description	Lamp	Fluoresce	Lumen Per Lamp	Light Loss Factor	Wattage
	SA	11	Lighting	HOUSER LED P3 30K BICHI TFM MVLGT JF4000	HOUSER LED M3 TFM P3 PERFORMANCE PACKAGE, 3000K, B000, TFM, JF4000	LED - 3000K	HOUSER_LED_P3_30K_BICHI_TFM_JF4000	4000	0.81	45,000
	SBE	6	Lighting	HOUSER LED P3 30K BICHI TFM MVLGT JF4000 (P/N)	HOUSER LED M3 TFM P3 PERFORMANCE PACKAGE, 3000K, B000, TFM, JF4000	LED - 3000K	HOUSER_LED_P3_30K_BICHI_TFM_JF4000	4000	0.81	18,000
	SC	5	Lighting	L2M 3070 LOMAR LBS MVLGT E270	IN-L2M 3000K, 1000LM, CLEAR, REBAR-IP6500K REFLECTOR, CHSD	LED - 3000K	L2M_30_70_LOMAR_LBS_MVLGT_E270	936	0.81	10,644
	SCE	3	Lighting	L2M 3070 LOMAR LBS MVLGT E270 EL	IN-L2M 3000K, 1000LM, CLEAR, REBAR-IP6500K REFLECTOR, CHSD W/REBAR	LED - 3000K	L2M_30_70_LOMAR_LBS_MVLGT_E270_EL	936	0.81	10,644



FEATURES & SPECIFICATIONS

[illegible]

ORDERING INFORMATION Lead times will

Lead times will vary depending on options selected. Consult with your sales representative.

/SCE



LDN6

6" Open and WallWash LED
Non-IC
New Construction Downlights



L306						
Series	Color temperature	Lenses	Aperture/Trim Color		Finish	Weight
L306 E* round	217 2700K	35 3000 lumens	336 Dwelllight	40 Clear	L35 Semi-operational	MAF01 1040x-eu1
	350 3000K	40 3500 lumens	336 Whiteflex	40 White	L35 Full operational	MAF02 1040x-eu2
	350 3000K	18 3000 lumens		40 White	L35 Specular	377 270V
	350 3000K	15 3000 lumens		40* Black		347* 270V

[illegible]

ACCESSIBLE LIGHT ET SÉCURITÉ CATHODIQUE

- Notes:**
- 1 Overall height/width based on latest package; refer to dimensional drawings.
 - 2 Not available with flashes.
 - 3 Not available with emergency options.
 - 4 Must specify voltage: 120V or 277V.
 - 5 Available with/without (W) intercom only.
 - 6 12.5" of aluminum depth or top access required for battery pack maintenance.
 - 7 Specify voltage. For use with generator supply (100watts, 900 watts, emergency load fixed and nonfixed).
 - 8 Verify battery 90% light level. Must be specified with 900W/120V or 900W/277V. Only available with 12/10 and 12/10 drivers.

9 Not available with CPAP5002, NP540E1R, NP560HP, NP580 or V100

DOWNLIGHTING

LONG



WDGE2 LED
Architectural Wall Sconce
Precision Refractive Optic



Specifications

Depth (D1):	7"
Depth (D2):	1.5"
Height:	9"
Width:	11.5"
Weight:	13.5 lbs



MGE LED Family Overview

Camera	Status	Near (m/ft)	CUT-Off (°)	Status	Sensitivity (m/ft) (°) (°)								
					0°	1°	2°	3°	4°	5°	6°	7°	
W063 LED	Visual Comfort	4W		--	750	1,300	2,000	--	--	--	--	--	--
W062 LED	Visual Comfort	10W	10W	Standard / Night	--	1,200	2,000	3,000	4,500	6,800	--	--	--
W062 LED	Precision Reductive	10W	10W	Standard / Night	200	1,200	2,000	3,200	4,300	--	--	--	--
W063 LED	Precision Reductive	15W	10W	Standard / Night	--	7,500	8,500	10,800	12,000	--	--	--	--
W064 LED	Precision Reductive	--	--	Standard / Night	--	12,800	16,000	30,000	38,000	12,800	21,800	--	--

Ordering Information

EXAMPLE: WIDGE3 LED P3 40K 80CRI VE M9VOLT SRM DDBX

Seed &	Package	Seeds/Temperature	Days	Days/Barrels	Voltage	Shredding
W6R2 LEO	P01	27K 2200R	2000P	715	150V Short	SHIPPED/Included
	P11	30K 2000R	4000R	720	150V 1000R	SHIPPED/Included
	P21	40K 4000R	10P Limited	730	150V 1000R	SHIPPED/Included
	P31	50K 500R	10P Limited	740	150V 1000R	SHIPPED/Included
	P41	50K 500R	10P Limited	740	150V 1000R	SHIPPED/Included

Standard Sensor Controls		Finish
E1806	Emergency light backup. Certified in CA to 20 MAC205 (70W, 57C, mini)	000003 Dark bronze
E2006	Emergency light backup. Certified in CA to 20 MAC205 (70W, 57C, mini)	000004 Black
FE*	PhotoCell, Button Type	000005 Natural aluminum
004*	0-10V dimming with prelit outside fixture for use with an external controller, ordered separately	000006 White
005	Rotates control arm for back box P88041. Total of 4-way points	000007 Sandstone
006		000008 Redwood dark lacquer
		000009 Redwood black
		000010 Redwood natural aluminum
		000011 Redwood white
		000012 Redwood sandstone



COMMERCIAL OUTDOORS

Dee Lithonia Way • Conyers, Georgia 30012 • Phone: 1-800-705-5ERF (7376) • www.lithonia.com
© 2010-2011 Acuity Brands Lighting, Inc. All rights reserved.

WIDEZ LE
Rys. DODATK.

Alternative Compliance

11-7-3

Parapet detailing

No more than 50% of façade may be covered in one material

Summary

Findings

- ✓ Staff is seeking your review and recommendation on the following:
 - Alternative Compliance for materials and parapets
 - Staff welcomes any feedback



DESIGN REVIEW BOARD

September 13, 2022