

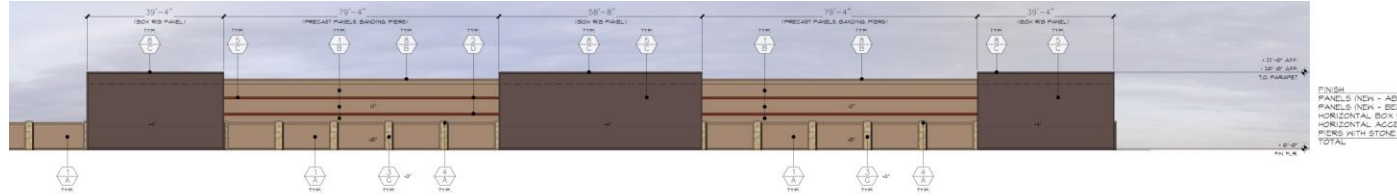


DESIGN REVIEW BOARD

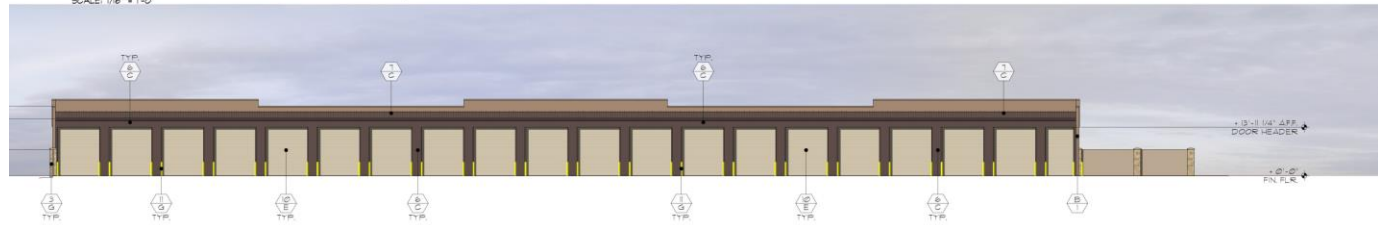
September 13, 2022



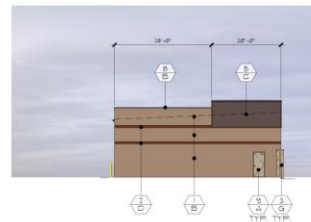
DRB22-00683



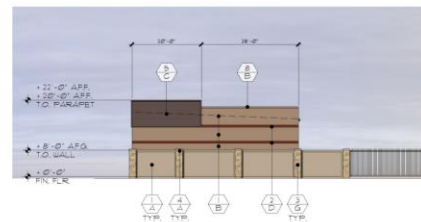
BUILDING 'C' - WEST SIDE ELEVATION
SCALE: 1/8" = 1'-0"



BUILDING 'C' - EAST SIDE ELEVATION
SCALE: 1/8" = 1'-0"



BLDG. 'C' - NORTH SIDE ELEV.
SCALE: 1/8" = 1'-0"



BLDG. 'C' - SOUTH SIDE ELEV.
SCALE: 1/8" = 1'-0"

Request

- Design Review

Purpose

- Expansion of an existing boat/RV storage facility

Location

- South of Elliot Road
- East of Sossaman Road
- West of Hawes Crossing
- North of the existing Happy Wife RV/boat storage facility



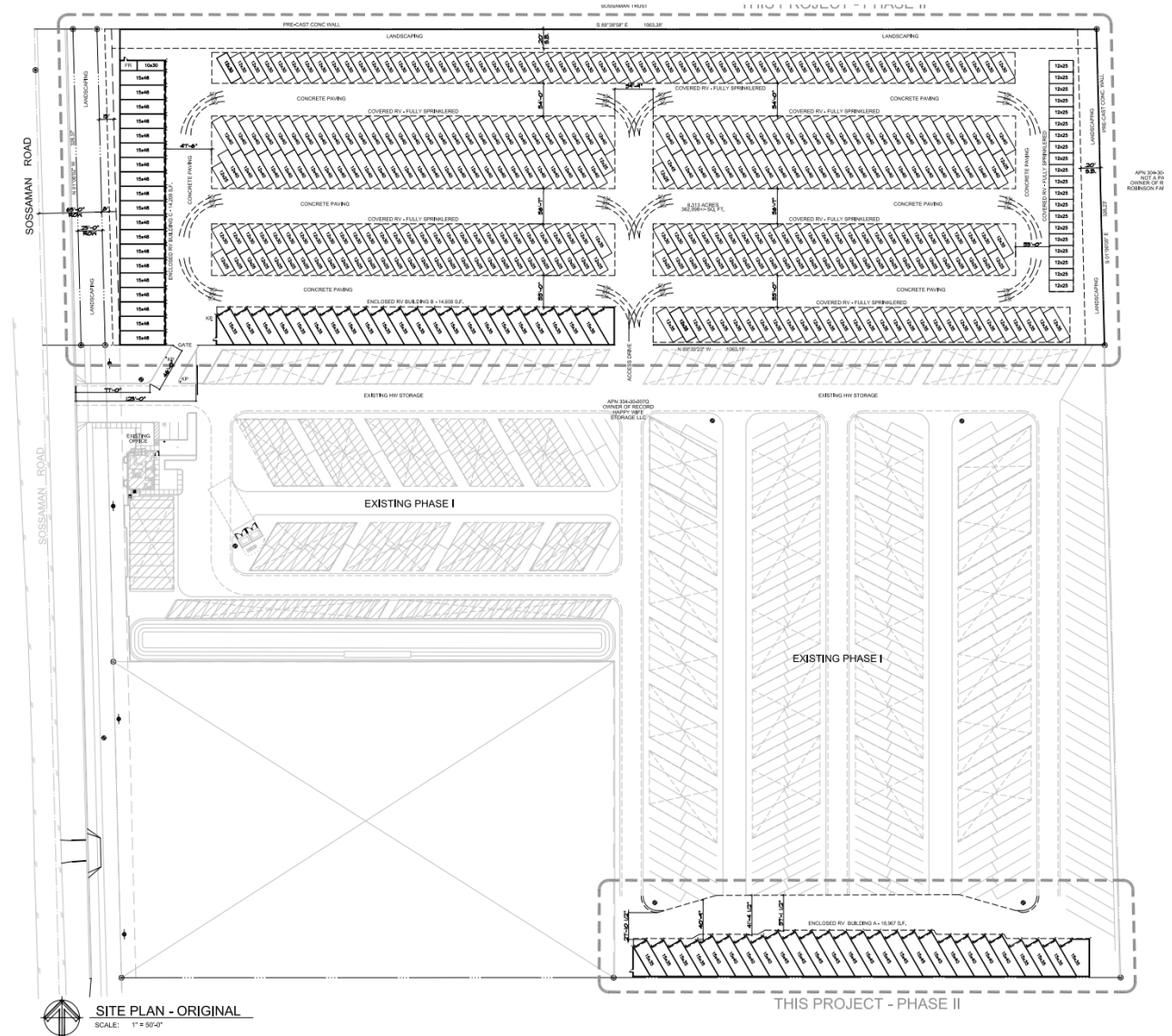
Site Photo



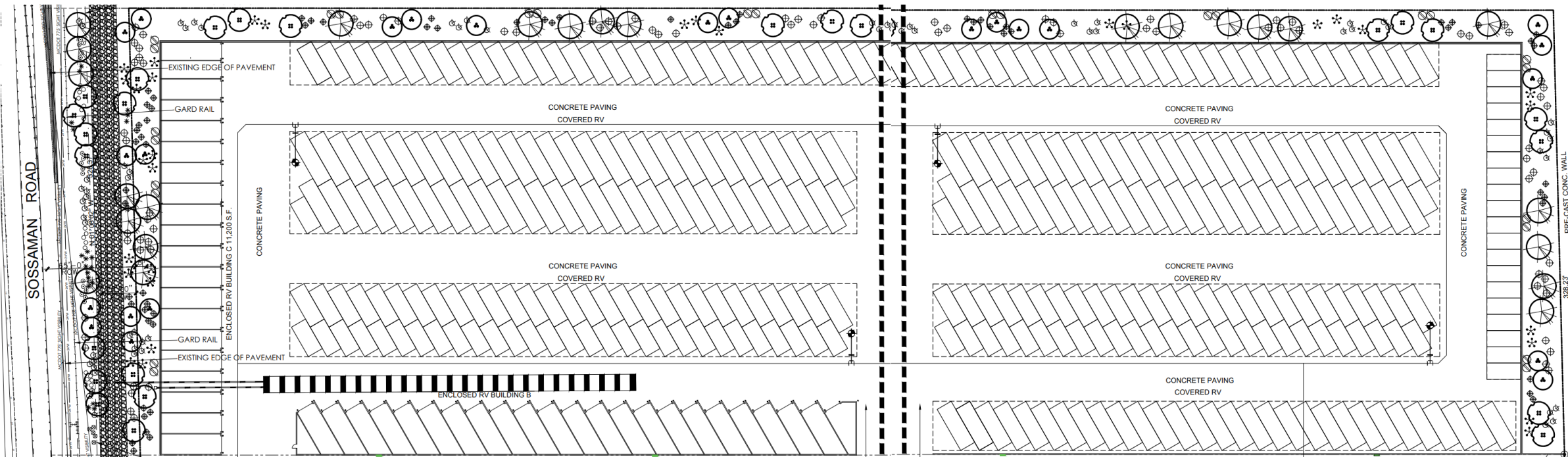
Looking east from Sossaman

Site Plan

- Three new storage buildings totaling 47,833 square feet
- New canopy structures totaling 179,302 square feet
- Utilize existing driveway on Sossaman Road
- 4 parking spaces provided



Landscape Plan



LANDSCAPE LEGEND TREES

- CHILOPSIS LINEARIS
DESERT WILLOW
36" BOX (10)
- PROSOPIS VELUTINA
NATIVE MESQUITE
24" BOX (7)
- CAESALPINIA CACALACO
CASCALOTE
15 GALLON (7)

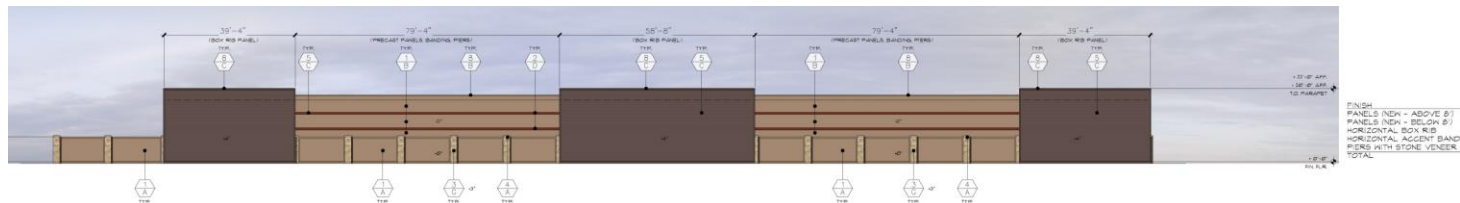
SHRUBS

- LARREA TRIDENTATA
CREOSOTE BUSH
5 GALLON (10)
- DASYLIRION WHEELERII
DESERT SPOON
5 GALLON (24)
- SIMMONSIA CHINENSIS
JOJOBA
5 GALLON (96)

GROUND COVER

- ERICAMERIA LARCIFOUA
TERPENTINE BUSH
1 GALLON (99)
- BAILEYA MULTIRADIATA
DESERT MARIGOLD
1 GALLON (143)
- SPHAERALCEA AMBIGUA
DESERT GLOBE MALLOW
1 GALLON (77)
- MELAMPODIUM LEUCANTHUM
BLACKFOOT DAISY
1 GALLON (141)

Elevations



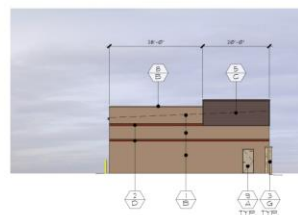
BUILDING 'C' - WEST SIDE ELEVATION

SCALE: 1/8" = 1'-0"



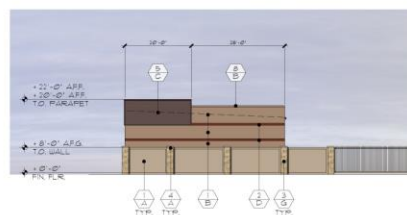
BUILDING 'C' - EAST SIDE ELEVATION

SCALE: 1/8" = 1'-0"



BLDG. 'C' - NORTH SIDE ELEV.

SCALE: 1/8" = 1'-0"



BLDG. 'C' - SOUTH SIDE ELEV.

SCALE: 1/8" = 1'-0"

MATERIAL SCHEDULE



MATERIALS

1. SMOOTH FINISHED, PRE-CAST CONCRETE PANEL
2. SCORED/FORMED CONCRETE FINISHED PANEL
3. PRE-CAST CONCRETE PIER
4. PRE-CAST CONCRETE PIER CAP
5. McELROY METAL MEGA RIB PANEL (HORIZ.)
6. McELROY METAL MULTI-COR PANEL (VERT.)
7. 'McELROY METAL' STANDING SEAM METAL ROOF PANELS
8. METAL PARAPET COPING
9. 3'W x 7'H H.M. DOOR AND FRAME
10. 'JANUS' STEEL COILING OVERHEAD DOOR
11. CONCRETE-FILLED STEEL BOLLARD

COLORS

- A. ANTLER VELVET, SW9111, 205-C3
- B. DOUBLE LATTE, SW9108, 204
- C. TUDOR BROWN (McELROY METAL)
- D. ROYCROFT COPPER RED, SW2039, 312
- E. LIGHT STONE (JANUS)
- F. CLEAR ANODIZED (ARCADIA)
- G. STONE VENEER (EXISTING or MATCH EXISTING)
- H. VIN-L-STRIPE YELLOW (DUNN EDWARDS)

ALL PAINTS TO BE SHERWIN WILLIAMS OR EQUAL.

Colors and Materials



**ANTLER VELVET SW911, 205-C3
SHERWIN WILLIAMS**



**DOUBLE LATTE SW9108, 204
SHERWIN WILLIAMS**



**TUDOR BROWN
McELROY METAL**



**ROYCROFT COPPER RED SW2839, 312
SHERWIN WILLIAMS**



**LIGHT STONE
JANUS**



**DUNN EDWARDS
VIN-L-STRIPE YELLOW**



Lighting

E-WFG Series

LED Full Cutoff Architectural Wall Pack
Replaces up to 250W MH



Alternative Compliance

11-7-3

Facades shall incorporate 3 different materials

No more than 50% of façade may be covered in one material

Summary

Findings

- ✓ Staff is seeking your review and recommendation on the following:
 - Alternative compliance for materials
- Staff welcomes any feedback



DESIGN REVIEW BOARD

September 13, 2022