



DESIGN REVIEW BOARD

September 13, 2022



DRB22-00679



Request

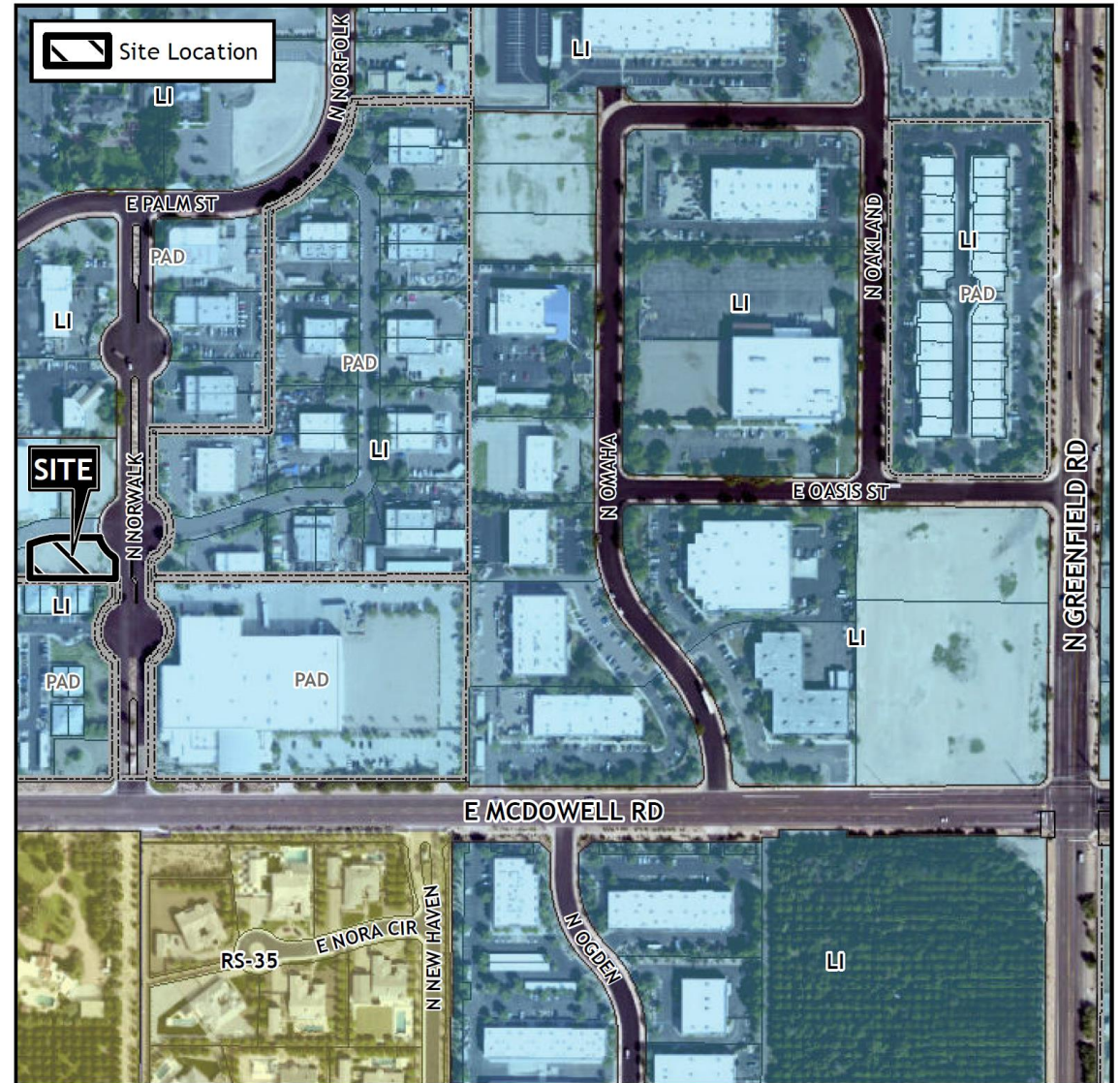
- Design Review

Purpose

- To allow for an industrial building

Location

- North of McDowell Road
- West of Greenfield Road



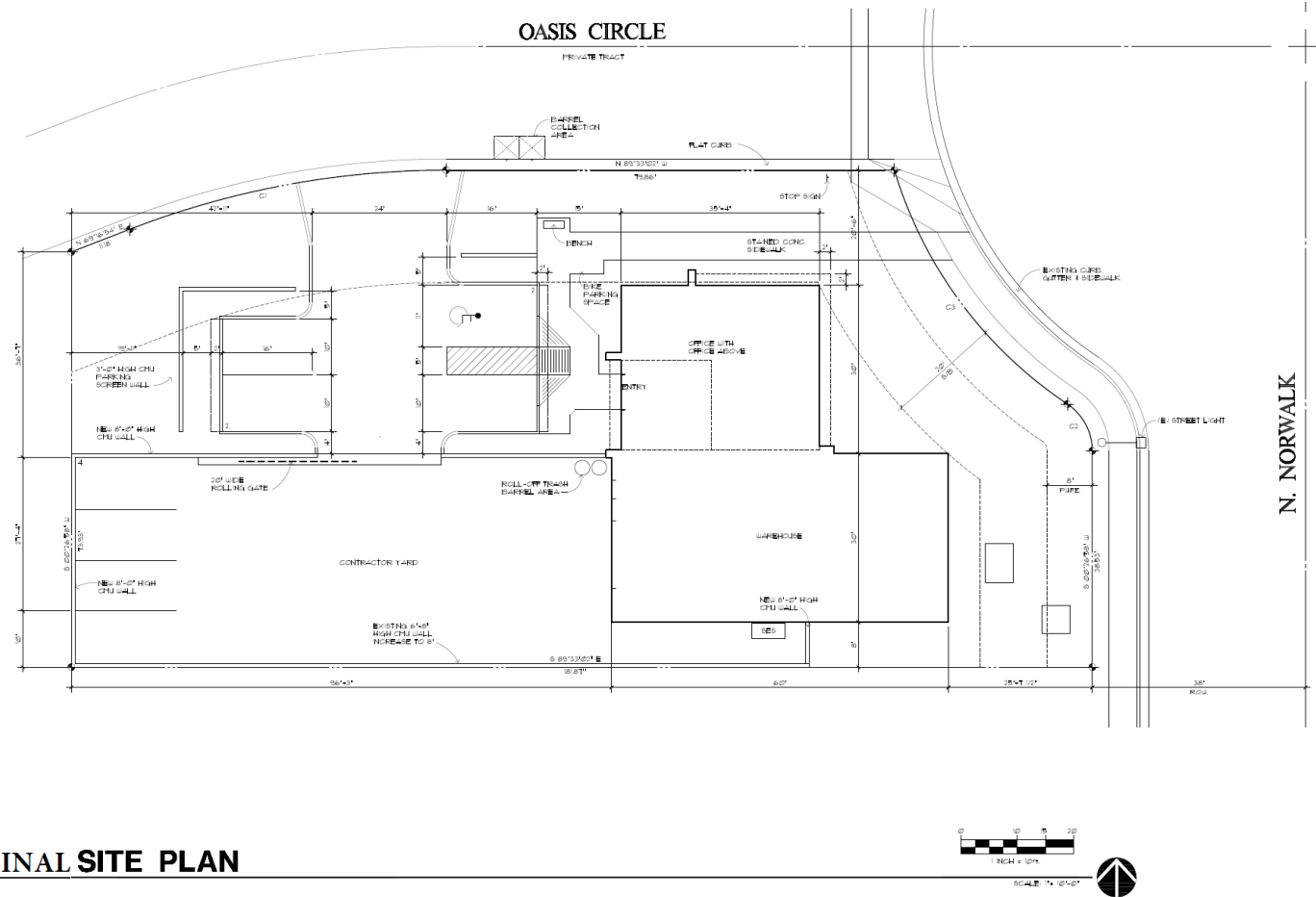
Site Photo



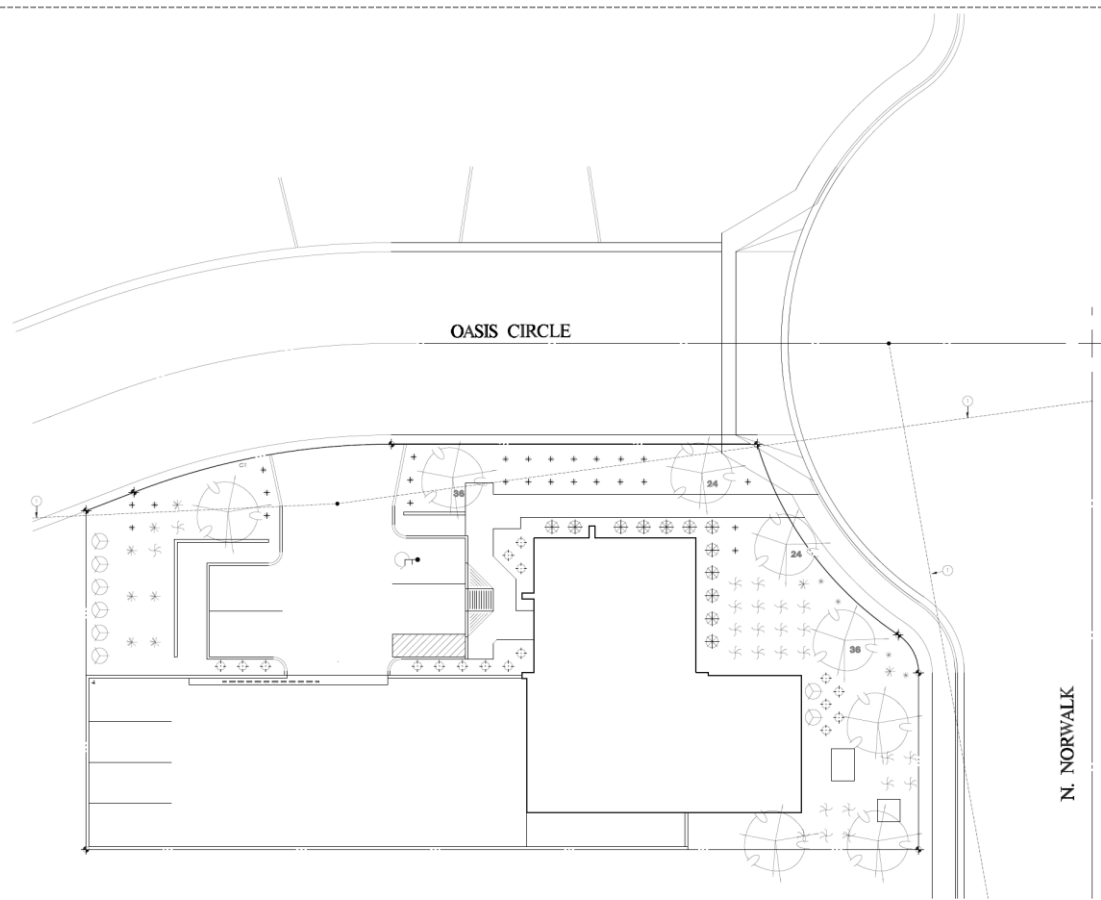
View of subject property from Norwalk

Site Plan

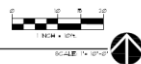
- 3,360 SF building
- 786 SF of office on second floor
- Single driveway from Oasis Circle
- 7 parking spaces required per MZO - 8 spaces provided



Landscape Plan



FINAL LANDSCAPE PLAN



PLANT LEGEND

SYMBOL	COMMON NAME	BOTANICAL NAME	SIZE	QNT	AREA		
TREES							
	PALO BREA	<i>Parkinsonia praecox</i>	36" BOX 24" BOX 15 GAL	2 2 4	100 100 100	200 200 400	

SHRUBS / GROUND COVER AND ACCENTS

	OCOTILLO	<i>Fouquieria splendens</i>	5 GAL	9	25	225	
	RED YUCCA	<i>Hesperaloe parvifolia</i>	5 GAL	25	25	625	
	BLUE ELF ALOE	<i>Aloe 'Blue Elf'</i>	5 GAL	17	5	85	
	SMOOTH AGAVE	<i>Agave desmettiana</i>	5 GAL	12	10	120	
	GOLDEN BARREL CACTUS	<i>Echinocactus grusonii</i>	1 GAL	30	5	150	
	SILVER CLOUD SAGE	<i>Leucophyllum candidum</i>	5 GAL	9	25	225	

TOTAL AREA 2255 SF

Elevations



WEST ELEVATION

SCALE: 3/16" = 1'-0"



SOUTH ELEVATION

SCALE: 3/16" = 1'-0"



EAST ELEVATION

SCALE: 3/16" = 1'-0"



NORTH ELEVATION

SCALE: 3/16" = 1'-0"

MATERIAL/COLOR SCHEDULE:

① 8X8X16 REGULAR CMU	SHERWIN WILLIAMS SW 6797 - JAY BLUE
② 8X8X16 REGULAR CMU	SUPERLITE BLOCK COLOR: LIGHT GRAY
③ 8X8X16 SCORED BLOCK CMU	SUPERLITE BLOCK COLOR: LIGHT GRAY
④ HORIZONTAL METAL SIDING	AEP SPAN NU-WAVE CORRUGATED METAL SIDING COLOR: ZINCALUME PLUS
⑤ VERTICAL METAL PANELS	AEP SPAN FLAT SHEET WALL PANEL COLOR: DARK BRONZE
⑥ ALUMINUM WINDOWS/STOREFRONT	COLOR: BRONZE ANNOXIDIZED
⑦ METAL CAP FLASHING	COLOR: ZINCALUME PLUS
⑧ DECORATIVE METAL PANELS	SHERWIN WILLIAMS SW 6797 - JAY BLUE
⑨ MANDOOR/OVERHEAD DOOR	SHERWIN WILLIAMS SW 6797 - JAY BLUE
⑩ GATE	SHERWIN WILLIAMS SW 6797 - JAY BLUE

Rendering





Rendering



Color and Materials

OFFICE WAREHOUSE BUILDING – COLOR SAMPLES 3959 E OASIS CIRCLE MESA, ARIZONA

<u>ITEM</u>	<u>COLOR</u>	<u>SAMPLE</u>
1 – METAL ROOF & AWNINGS	AEP SPAN STANDING SEAM ZINCALUME PLUS	
2 – REGULAR CMU	GRAY	
3 – SCORED CMU	GRAY	

4 – HORIZONTAL
METAL SIDING

AEP SPAN
NU-WAVE CORRUGATED
ZINCALUME PLUS



5 - VERTICAL
METAL PANELS

AEP SPAN
FLAT SHEET WALL PANEL
DARK BRONZE



6 – ACCENT

SHERWIN-WILLIAMS
SW 6797 JAY BLUE



Lighting



LFR-6RDS

LITEFRAME 6" ROUND SHALLOW DOWNLIGHT

FEATURES

- 6" LED shallow downlight delivering 1000-3000 lumens
- Direct Install from below ceiling for New Construction or Remodel applications
- Optional housing accessories available
- Four beam distributions
- 2700K-5000K, 80+ and 90+ CRI (2 SDCM)
- Dimming protocols include 0-10V, Phase (Forward/Reverse), DALI, DMX, Lutron 2-wire Forward Phase, and EcoSystem
- NX Distributed Intelligence™ wired and wireless controls capability available



DATE: _____ LOCATION: _____
TYPE: _____ PROJECT: _____
CATALOG #: _____

LITEFRAME
2.0



RELATED PRODUCTS

[LFR-6RD](#)
[LFR-6RW](#)

[LFR-6RA](#)
[LiteFrame Family](#)

SERVICE PROGRAMS



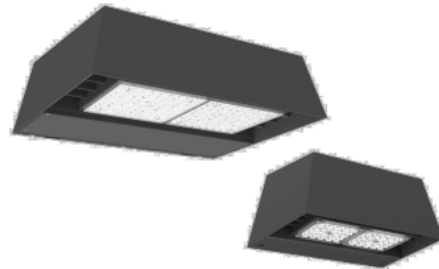
RATIO Wall

RWL1/RWL2 LED WALLPACK

FEATURES

- Low profile LED wall luminaire with a variety of IES distributions for lighting applications such as retail, commercial and industrial building mount
- Featuring Micro Strike Optics which maximizes target zone illumination with minimal losses at the house-side, reducing light trespass issues
- Visual comfort standard
- Control options including photo control, occupancy sensing, NX Distributed Intelligence™, Wiscap and 7-Pin with networked controls
- Battery Backup options available for emergency code compliance
- Quick-mount adapter allows easy installation/maintenance
- 347V and 480V versions for industrial applications and Canada
- Stock versions available in 3500lm and 5500lm configurations at 4000K

CATALOG #: _____



RELATED PRODUCTS



CUSO

SLIM LED AC/EMERGENCY OUTDOOR LIGHT

FEATURES

- Includes self-diagnostic/self-test feature to monitor proper operation
- Quick installation
- Universal 120-277VAC input, 60Hz.
- Includes long-life 7.2V Nickel Cadmium battery for UL recognized 90 minute operation
- Full re-charge within 24 hours
- Provided with water-proof test switch and AC-On indicator
- 0°C to 50°C Standard Model, -25°C to 50°C with optional heater
- UL924 and Wet Location Listed

DATE: _____ LOCATION: _____
TYPE: _____ PROJECT: _____
CATALOG #: _____

tradeSELECT™



RELATED PRODUCTS

Summary

Findings

- ✓ Staff is seeking your review and recommendation on the proposed building and landscape design
 - Staff welcomes any feedback



DESIGN REVIEW BOARD

September 13, 2022