

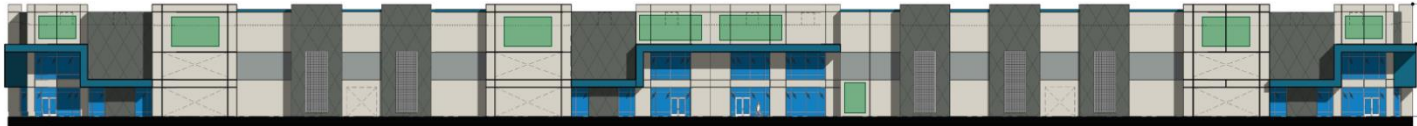


DESIGN REVIEW BOARD

September 13, 2022

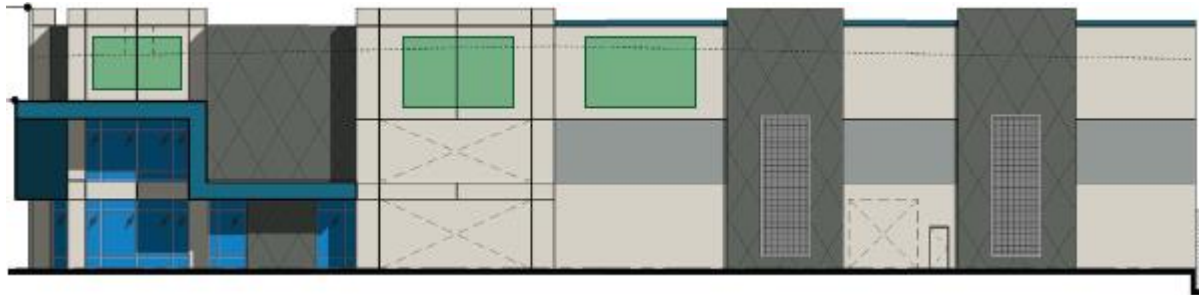


DRB22-00673



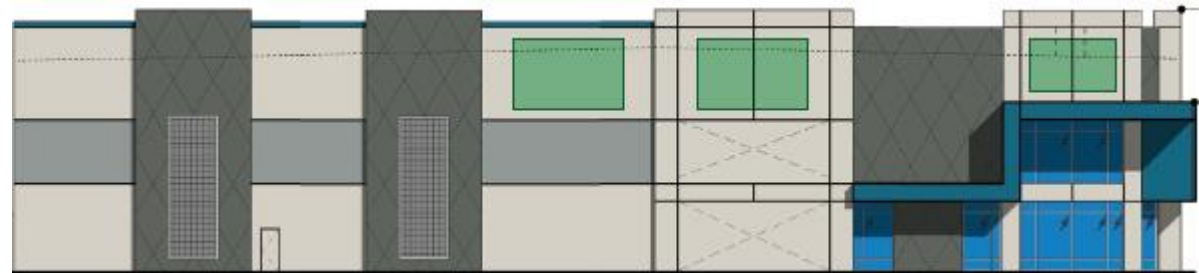
Request

- Design Review



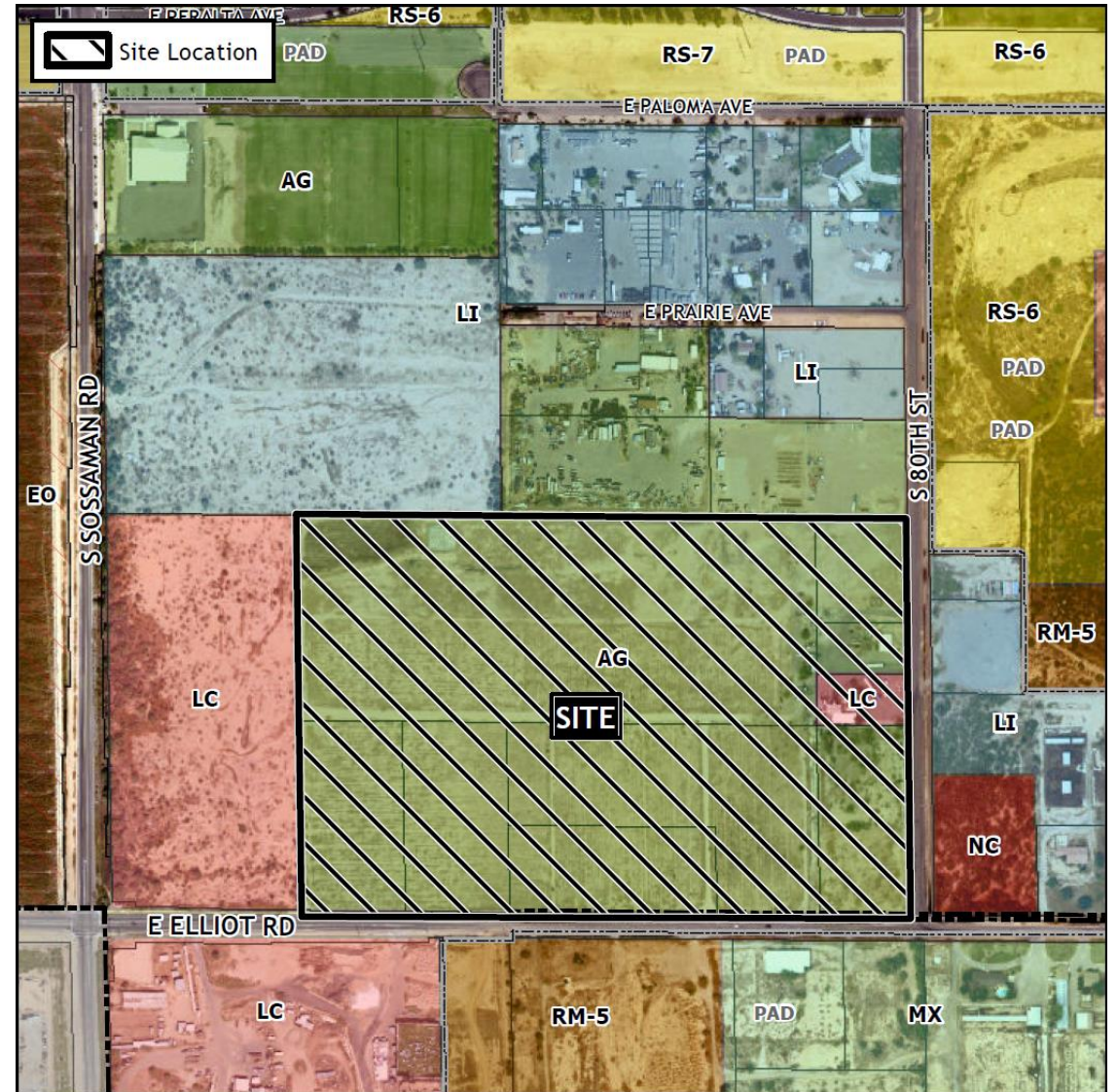
Purpose

- To allow for the development of an industrial building



Location

- North of Elliot Road
- East of Sossaman Road

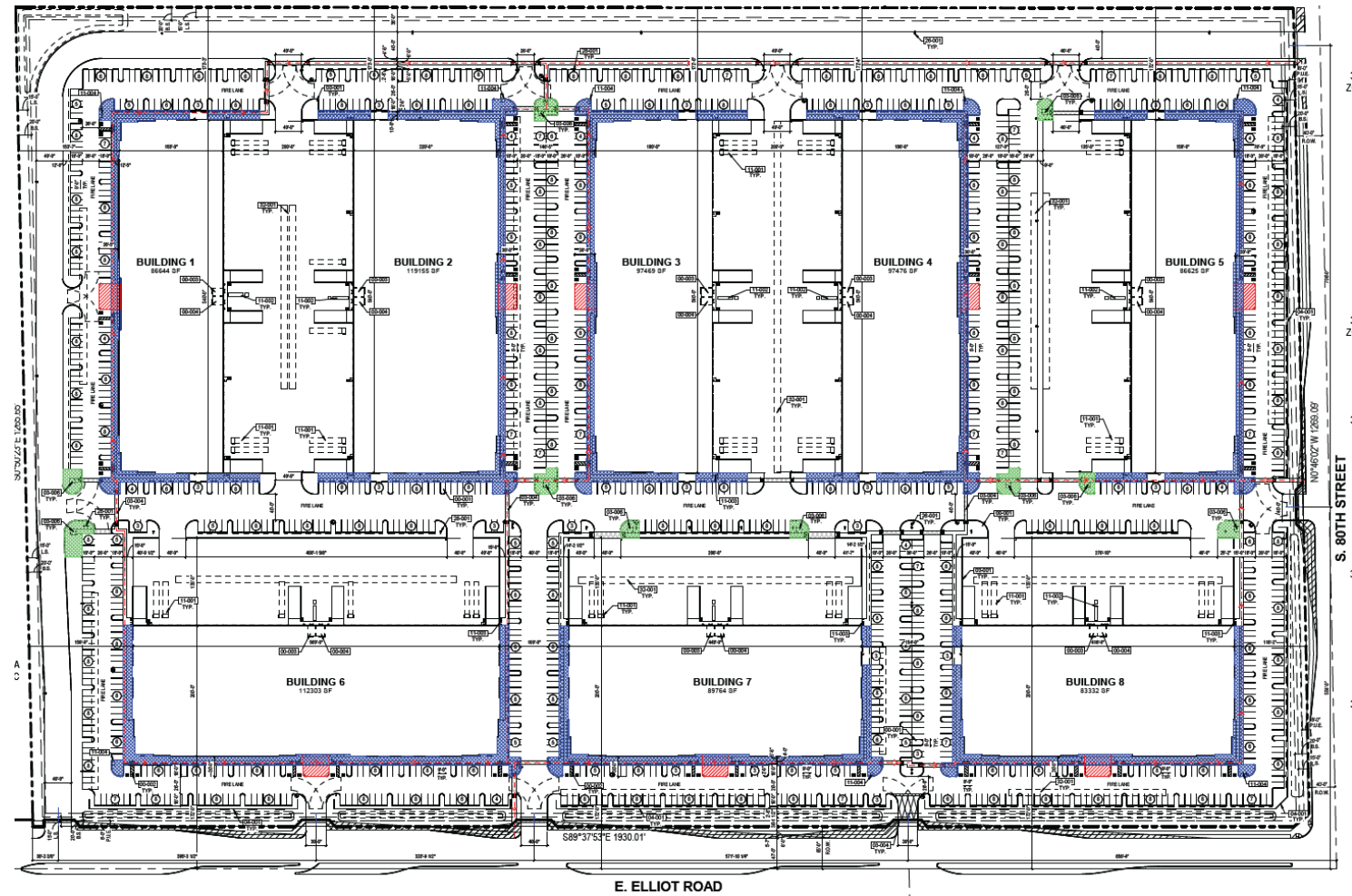


Site Photo

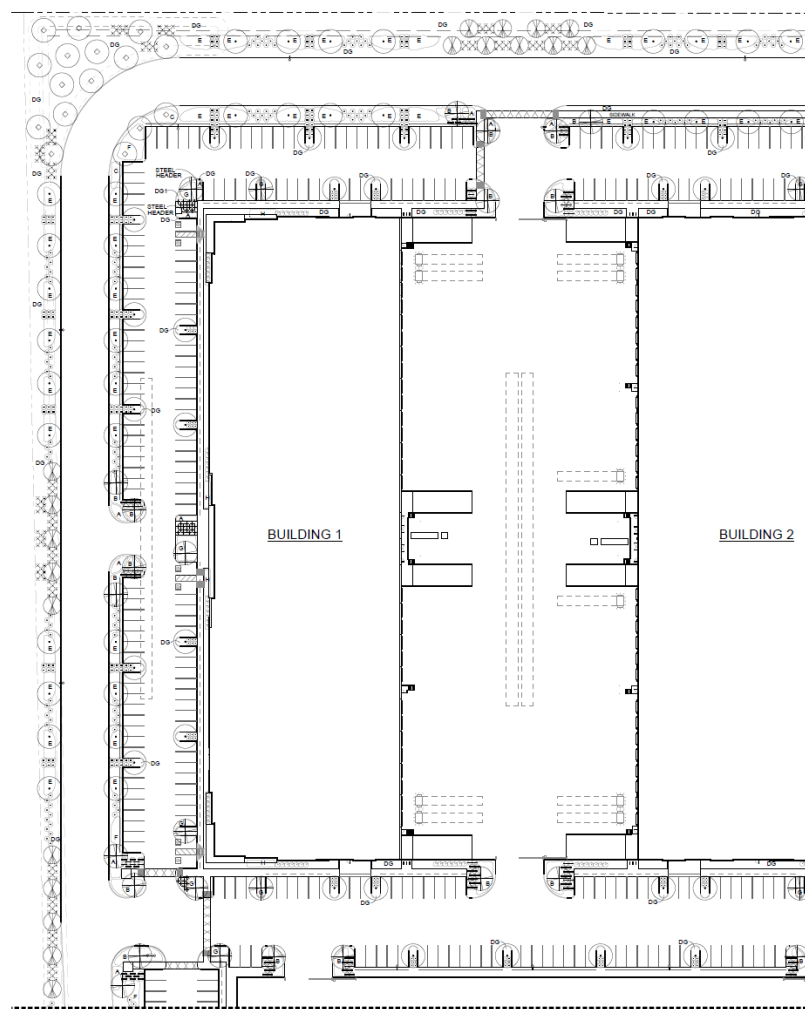


Looking north towards the site from Elliot Road

Site Plan



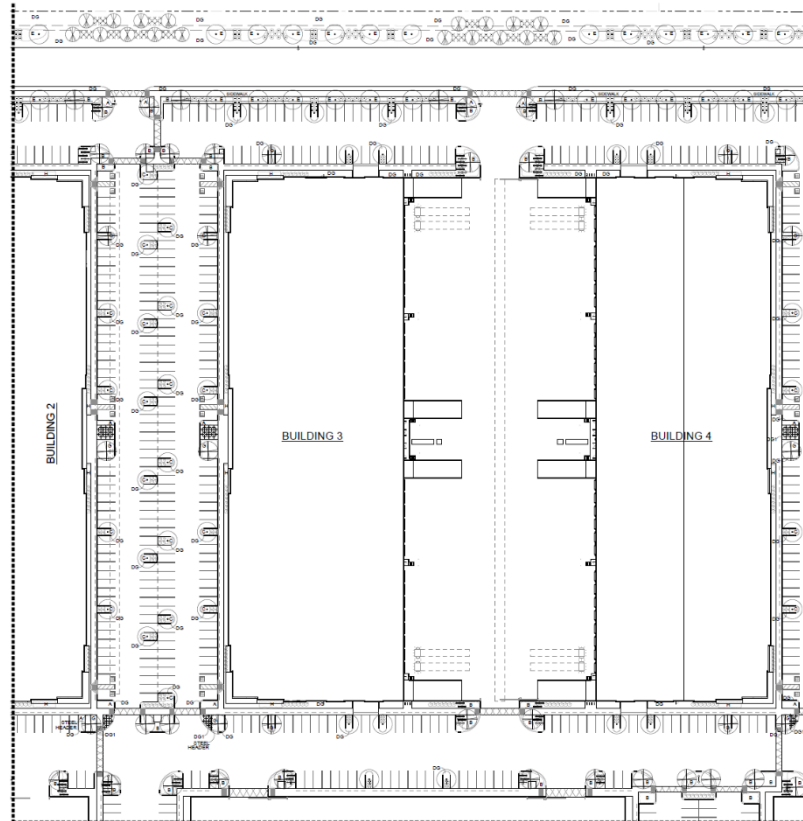
Landscape Plan



PROPOSED PLANT PALETTE

TREES		SIZE/COMMENT/QT
PROSOPIS 'COOPERI'	COOPERI MESQUITE	36" BOX / 148 QTY / LOW BREAKING / MATCHED
ACACIA FARNESIANA	SWEET ACACIA	36" BOX / 22 QTY / LOW BREAKING / MATCHED
CERCIDIUM PRAECOX 'AZT #5'	AZT HYBRID PALO BREA	24" BOX / 37 QTY / LOW BREAKING / MATCHED
ULMUS PARVIFOLIA	EVERGREEN ELM	24" BOX / 320 QTY / LOW BREAKING / MATCHED
EBENOPSIS EBANO	TEXAS EBONY	24" BOX / 46 QTY / LOW BREAKING / MATCHED
SHRUBS		SIZE/COMMENT/QT
HESPERALOE PARVIFLORA	RED YUCCA	5 GAL, 211 QTY
OLEA EUROPAEA 'LITTLE OLLIE'	DWARF OLIVE	5 GAL, 312 QTY
RUELLIA PENINSULARIS	BAJA RUELLIA	5 GAL, 581 QTY
SIMMONDSIA CHINENSIS	JOJOBA	5 GAL, 681 QTY
LEUCOPHYLLUM ZYGOPHYLLUM	CIMARRON SAGE	5 GAL, 764 QTY
LEUCOPHYLLUM LANGMANIAE	RIO BRAVO SAGE	5 GAL, 613 QTY
MUHLENBERGIA RIGIDA	NASHVILLE GRASS	5 GAL, 477 QTY
GROUNDCOVERS		SIZE/COMMENT/QT
A	LANTANA 'NEW GOLD'	1 GAL @ 3' O.C., 519 QTY
B	EREMOPHILA GLABRA 'MIDNEW GOLD'	1 GAL @ 4' O.C., 1,379 QTY
C	CHRYSACTINIA MEXICANA	1 GAL @ 3' O.C., 617 QTY
D	ERICAMERIA LARICIFOLIA 'AGUIRRE'	1 GAL @ 4' O.C., 454 QTY
E	ACACIA REDOLENS 'DESERT CARPET'	1 GAL @ 5' O.C., 1,603 QTY
F	BOUTELOUA 'BLONDE AMBITION'	1 GAL @ 3' O.C., 361 QTY
G	EREMOPHILA CARNOSA	1 GAL @ 4' O.C., 454 QTY
H	RUELLIA BRITTONIANA	1 GAL @ 3' O.C., 590 QTY
INERT MATERIAL		
DG	DECOMPOSED GRANITE	1/2" SCREENED, 2" DEPTH, TYP.
DG1	DECOMPOSED GRANITE	1/2" MINUS, 2" DEPTH, TYP.

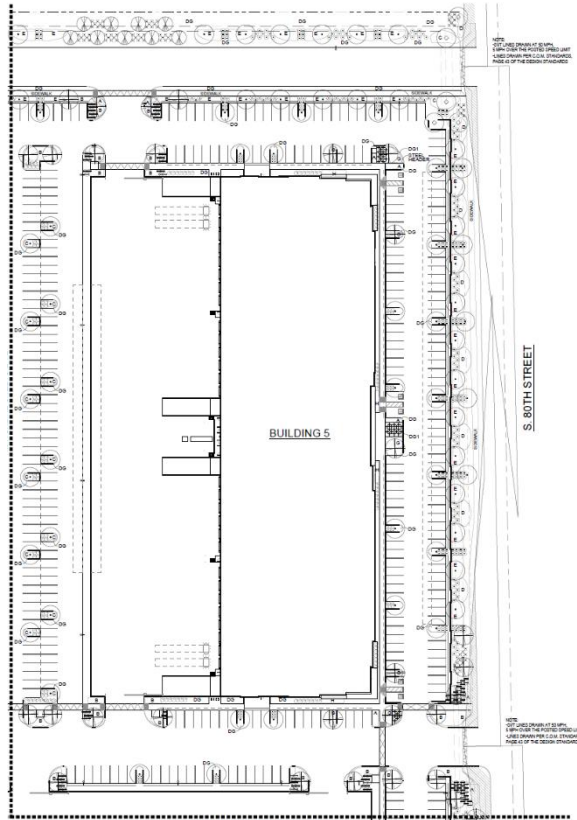
Landscape Plan



PROPOSED PLANT PALETTE

TREES		SIZE/COMMENT/QTY
	PROSOPIS 'COOPERI' COOPERI MESQUITE	36" BOX / 148 QTY / LOW BREAKING / MATCHED
	ACACIA FARNESIANA SWEET ACACIA	36" BOX / 22 QTY / LOW BREAKING / MATCHED
	CERCIDIUM PRAECOX 'AZT #5' AZT HYBRID PALO BREA	24" BOX / 37 QTY / LOW BREAKING / MATCHED
	ULMUS PARVIFOLIA EVERGREEN ELM	24" BOX / 320 QTY / LOW BREAKING / MATCHED
	EBENOPSIS EBANO TEXAS EBONY	24" BOX / 46 QTY / LOW BREAKING / MATCHED
SHRUBS		SIZE/COMMENT/QTY
+	HESPERALOE PARVIFLORA RED YUCCA	5 GAL, 211 QTY
o	OLEA EUROPAEA 'LITTLE OLLIE' DWARF OLIVE	5 GAL, 312 QTY
⊖	RUELLIA PENINSULARIS BAJA RUELLIA	5 GAL, 581 QTY
⊙	SIMMONDSIA CHINENSIS JOJOBA	5 GAL, 581 QTY
⊙	LEUCOPHYLLUM ZYGOPHYLLUM CIMARRON SAGE	5 GAL, 754 QTY
⊙	LEUCOPHYLLUM LANGMANIAE RIO BRAVO SAGE	5 GAL, 513 QTY
x	MUHLENBERGIA RIGIDA NASHVILLE GRASS	5 GAL, 477 QTY
GROUNDCOVERS		SIZE/COMMENT/QTY
A	LANTANA 'NEW GOLD' TRAILING YELLOW LANTANA	1 GAL @ 3' O.C., 519 QTY
B	EREMOPHILA GLABRA 'MIDNEW GOLD' OUTBACK SUNRISE EMU	1 GAL @ 4' O.C., 1,379 QTY
C	CHRYSACTINIA MEXICANA DAMIANITA	1 GAL @ 3' O.C., 617 QTY
D	ERICAMERIA LARICIFOLIA 'AGUIRRE' TURPENTINE BUSH	1 GAL @ 4' O.C., 454 QTY
E	ACACIA REDOLENS 'DESERT CARPET' TRAILING ACACIA	1 GAL @ 5' O.C., 1,603 QTY
F	BOUTELOUA 'BLONDE AMBITION' BLONDE AMBITION GRAMA	1 GAL @ 3' O.C., 361 QTY
G	EREMOPHILA CARNOSA WINTER BLAZE EMU	1 GAL @ 4' O.C., 454 QTY
H	RUELLIA BRITTONIANA MEXICAN PETUNIA	1 GAL @ 3' O.C., 590 QTY
INERT MATERIAL		
DG	DECOMPOSED GRANITE ROCK PROS - ROSE	1/2" SCREENED, 2" DEPTH, TYP.
DG1	DECOMPOSED GRANITE ROCK PROS - MOHOGANY	1/2" MINUS, 2" DEPTH, TYP.

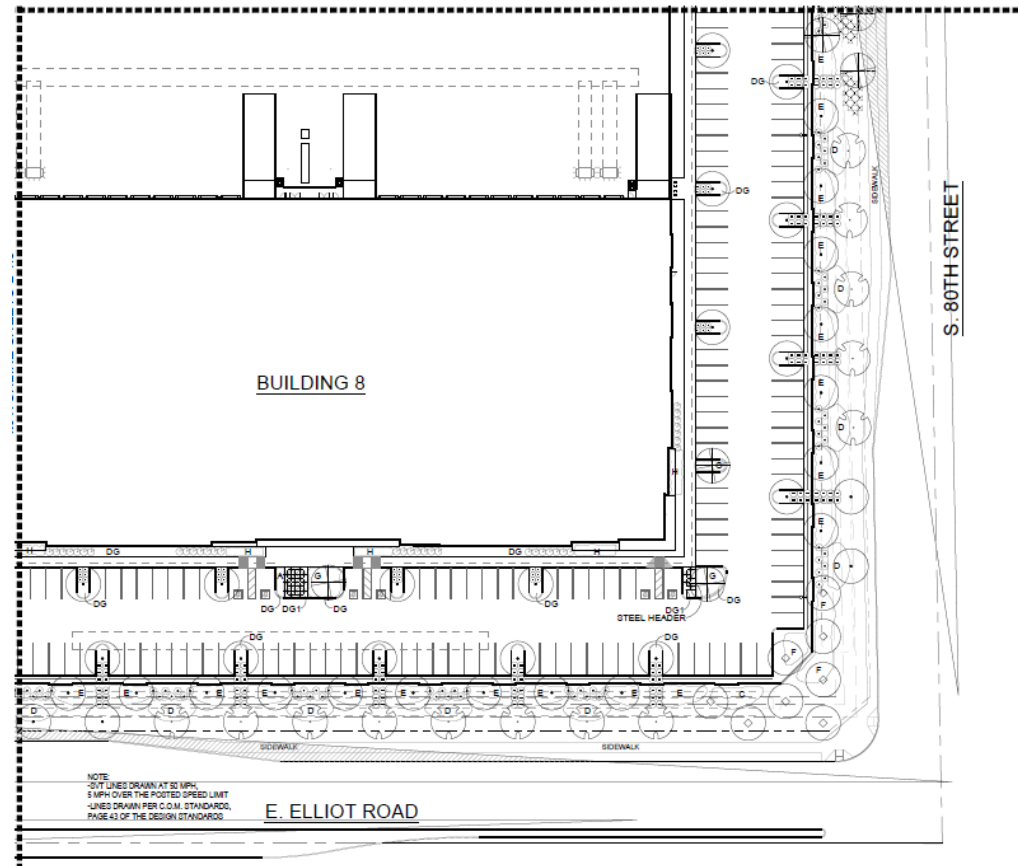
Landscape Plan



PROPOSED PLANT PALETTE

TREES		SIZE/COMMENT/QTY
	PROSOPIS 'COOPERI' COOPERI MESQUITE	36" BOX / 148 QTY / LOW BREAKING / MATCHED
	ACACIA FARNESIANA SWEET ACACIA	36" BOX / 22 QTY / LOW BREAKING / MATCHED
	CERCIDIUM PRAECOX 'AZT #5' AZT HYBRID PALO BREA	24" BOX / 37 QTY / LOW BREAKING / MATCHED
	ULMUS PARVIFOLIA EVERGREEN ELM	24" BOX / 320 QTY / LOW BREAKING / MATCHED
	EBENOPSIS EBANO TEXAS EBONY	24" BOX / 46 QTY / LOW BREAKING / MATCHED
SHRUBS		SIZE/COMMENT/QTY
	HESPERALOE PARVIFLORA RED YUCCA	5 GAL, 211 QTY
	OLEA EUROPAEA 'LITTLE OLLIE' DWARF OLIVE	5 GAL, 312 QTY
	RUPELLIA PENINSULARIS BAJA RUELLIA	5 GAL, 581 QTY
	SIMMONDSIA CHINENSIS JOJOBA	5 GAL, 681 QTY
	LEUCOPHYLLUM ZYGOPHYLLUM CIMARRON SAGE	5 GAL, 764 QTY
	LEUCOPHYLLUM LANGMANIAE RIO BRAVO SAGE	5 GAL, 613 QTY
	MUHLENBERGIA RIGIDA NASHVILLE GRASS	5 GAL, 477 QTY
GROUNDCOVERS		SIZE/COMMENT/QTY
	LANTANA 'NEW GOLD' TRAILING YELLOW LANTANA	1 GAL @ 3' O.C., 519 QTY
	EREMOPHILA GLABRA 'MIDNEW GOLD' OUTBACK SUNRISE EMU	1 GAL @ 4' O.C., 1,379 QTY
	CHRYSANTHEMUM MEXICANUM DAMIANITA	1 GAL @ 3' O.C., 617 QTY
	ERICACEAE LARICIFOLIA 'AGUIRRE' TURPENTINE BUSH	1 GAL @ 4' O.C., 454 QTY
	ACACIA REDOLENS 'DESERT CARPET' TRAILING ACACIA	1 GAL @ 5' O.C., 1,603 QTY
	BOUTELOUA 'BLONDE AMBITION' BLONDE AMBITION GRAMA	1 GAL @ 3' O.C., 361 QTY
	EREMOPHILA CARNOSA WINTER BLAZE EMU	1 GAL @ 4' O.C., 454 QTY
	RUPELLIA BRITTONIANA MEXICAN PETUNIA	1 GAL @ 3' O.C., 590 QTY
INERT MATERIAL		
DG	DECOMPOSED GRANITE ROCK PROS - ROSE	1/2" SCREENED, 2" DEPTH, TYP.
DG1	DECOMPOSED GRANITE ROCK PROS - MOHOGANY	1/2" MINUS, 2" DEPTH, TYP.

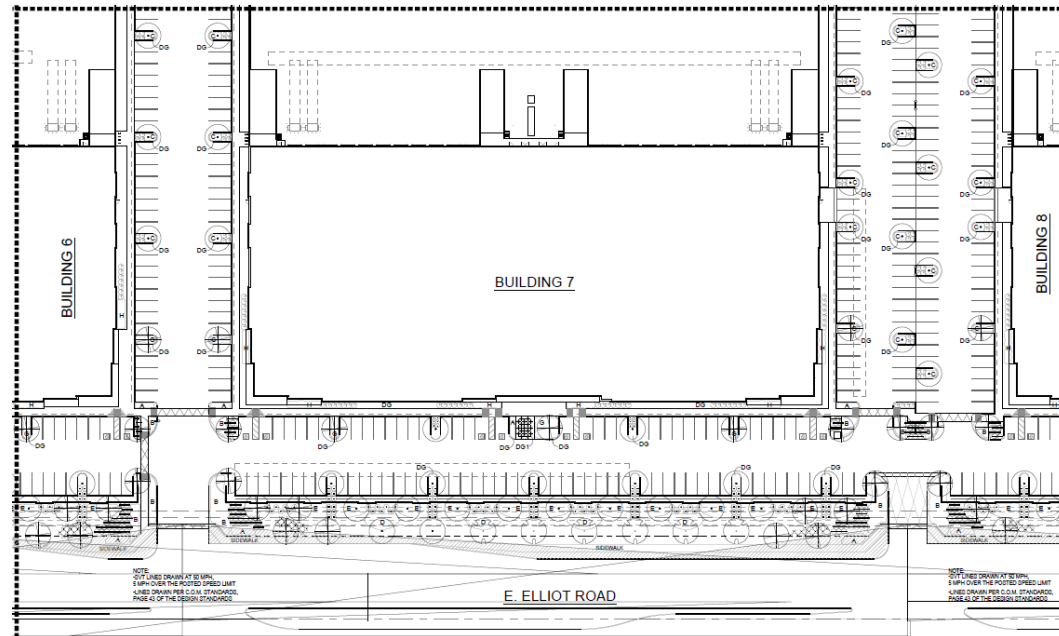
Landscape Plan



PROPOSED PLANT PALETTE

TREES	SIZE/COMMENT/QTY
PROSOPIS 'COOPERI' COOPERI MESQUITE	36" BOX / 148 QTY / LOW BREAKING / MATCHED
ACACIA FARNESIANA SWEET ACACIA	36" BOX / 22 QTY / LOW BREAKING / MATCHED
CERCIDIUM PRAECOX 'AZT #5' AZT HYBRID PALO BREA	24" BOX / 37 QTY / LOW BREAKING / MATCHED
ULMUS PARVIFOLIA EVERGREEN ELM	24" BOX / 320 QTY / LOW BREAKING / MATCHED
EBENOPSIS EBANO TEXAS EBONY	24" BOX / 46 QTY / LOW BREAKING / MATCHED
SHRUBS	SIZE/COMMENT/QTY
HESPERALOE PARVIFLORA RED YUCCA	5 GAL, 211 QTY
OLEA EUROPAEA 'LITTLE OLLIE' DWARF OLIVE	5 GAL, 312 QTY
RUELLIA PENINSULARIS BAJA RUELLIA	5 GAL, 581 QTY
SIMMONDSIA CHINENSIS JOJOBA	5 GAL, 581 QTY
LEUCOPHYLLUM ZYGOPHYLLUM CIMARRON SAGE	5 GAL, 754 QTY
LEUCOPHYLLUM LANGMANIAE RIO BRAVO SAGE	5 GAL, 513 QTY
MUHLENBERGIA RIGIDA NASHVILLE GRASS	5 GAL, 477 QTY
GROUNDCOVERS	SIZE/COMMENT/QTY
A LANTANA 'NEW GOLD' TRAILING YELLOW LANTANA	1 GAL @ 3' O.C., 519 QTY
B EREMOPHILA GLABRA 'MIDNEW GOLD' OUTBACK SUNRISE EMU	1 GAL @ 4' O.C., 1,379 QTY
C CHRYSACTINIA MEXICANA DAMIANITA	1 GAL @ 3' O.C., 617 QTY
D ERICAMERIA LARICIFOLIA 'AGUIRRE' TURPENTINE BUSH	1 GAL @ 4' O.C., 454 QTY
E ACACIA REDOLENS 'DESERT CARPET' TRAILING ACACIA	1 GAL @ 5' O.C., 1,603 QTY
F BOUTELOUA 'BLONDE AMBITION' BLONDE AMBITION GRAMA	1 GAL @ 3' O.C., 361 QTY
G EREMOPHILA CARNOSA WINTER BLAZE EMU	1 GAL @ 4' O.C., 454 QTY
H RUELLIA BRITTONIANA MEXICAN PETUNIA	1 GAL @ 3' O.C., 590 QTY
INERT MATERIAL	SIZE/COMMENT/QTY
DG DECOMPOSED GRANITE ROCK PROS - ROSE	1/2" SCREENED, 2" DEPTH, TYP.
DG1 DECOMPOSED GRANITE ROCK PROS - MOHOGANY	1/2" MINUS, 2" DEPTH, TYP.

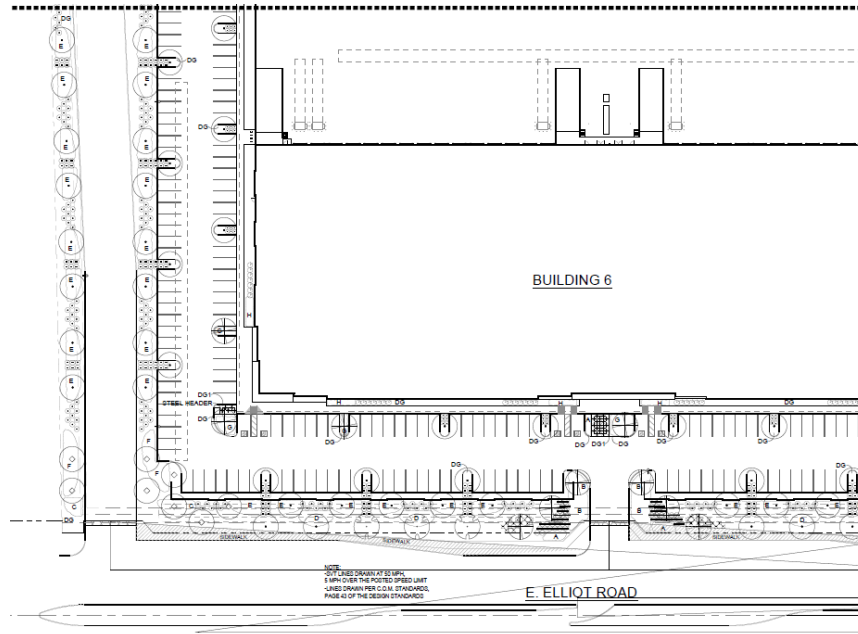
Landscape Plan



PROPOSED PLANT PALETTE

TREES		SIZE/COMMENT/QTY
	PROSOPIS 'COOPERI' COOPERI MESQUITE	36" BOX / 148 QTY / LOW BREAKING / MATCHED
	ACACIA FARNESIANA SWEET ACACIA	36" BOX / 22 QTY / LOW BREAKING / MATCHED
	CERCIDIUM PRAECOX 'AZT #5' AZT HYBRID PALO BREA	24" BOX / 37 QTY / LOW BREAKING / MATCHED
	ULMUS PARVIFOLIA EVERGREEN ELM	24" BOX / 320 QTY / LOW BREAKING / MATCHED
	EBENOPSIS EBANO TEXAS EBONY	24" BOX / 46 QTY / LOW BREAKING / MATCHED
SHRUBS		SIZE/COMMENT/QTY
+	HESPERALOE PARVIFLORA RED YUCCA	5 GAL, 211 QTY
o	OLEA EUROPAEA 'LITTLE OLLIE' DWARF OLIVE	5 GAL, 312 QTY
⊖	RUPELLIA PENINSULARIS BAJA RUELLIA	5 GAL, 581 QTY
⊙	SIMMONDSIA CHINENSIS JOJOBA	5 GAL, 581 QTY
⊕	LEUCOPHYLLUM ZYGOPHYLLUM CIMARRON SAGE	5 GAL, 754 QTY
⊗	LEUCOPHYLLUM LANGMANIAE RIO BRAVO SAGE	5 GAL, 513 QTY
x	MUHLENBERGIA RIGIDA NASHVILLE GRASS	5 GAL, 477 QTY
GROUNDCOVERS		SIZE/COMMENT/QTY
A	LANTANA 'NEW GOLD' TRAILING YELLOW LANTANA	1 GAL @ 3' O.C., 519 QTY
B	EREMOPHILA GLABRA 'MISNEW GOLD' OUTBACK SUNRISE EMU	1 GAL @ 4' O.C., 1,379 QTY
C	CHRYSANTHEMUM MEXICANA DAMIANITA	1 GAL @ 3' O.C., 617 QTY
D	ERICAMERIA LARICIFOLIA 'AGUIRRE' TURPENTINE BUSH	1 GAL @ 4' O.C., 454 QTY
E	ACACIA REDOLENS 'DESERT CARPET' TRAILING ACACIA	1 GAL @ 5' O.C., 1,603 QTY
F	BOUTELOUA 'BLONDE AMBITION' BLONDE AMBITION GRAMA	1 GAL @ 3' O.C., 361 QTY
G	EREMOPHILA CARNOSA WINTER BLAZE EMU	1 GAL @ 4' O.C., 454 QTY
H	RUPELLIA BRITTONIANA MEXICAN PETUNIA	1 GAL @ 3' O.C., 590 QTY
INERT MATERIAL		
DS	DECOMPOSED GRANITE ROCK PROS - ROSE	1/2" SCREENED, 2" DEPTH, TYP.
DS1	DECOMPOSED GRANITE ROCK PROS - MOHOGANY	1/2" MINUS, 2" DEPTH, TYP.

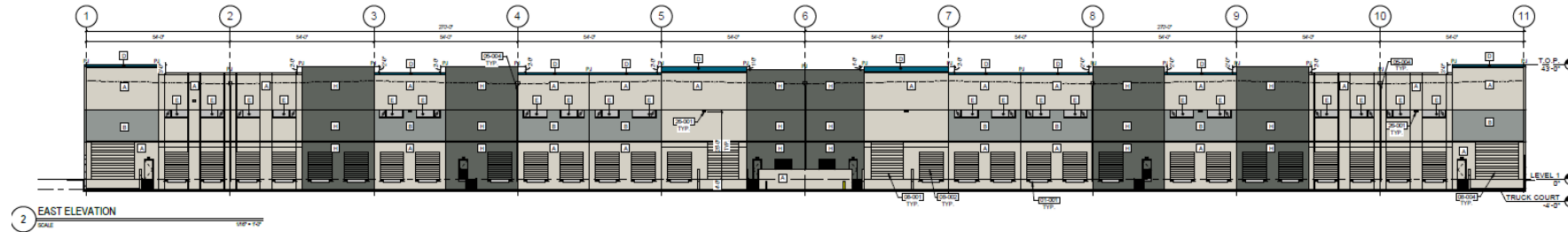
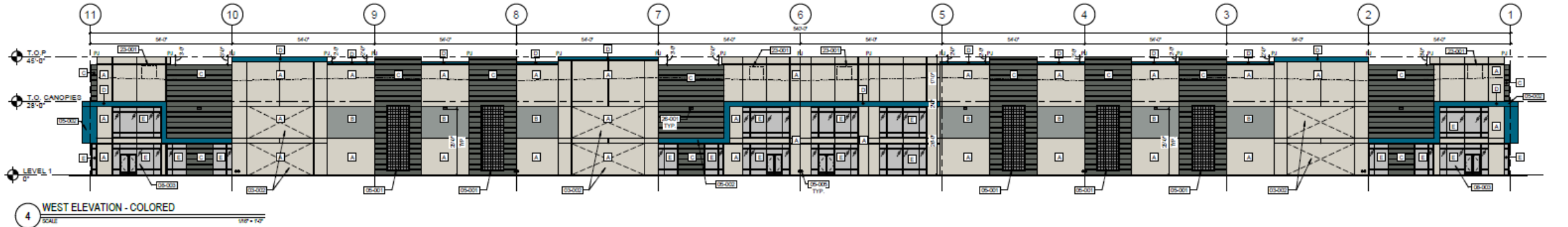
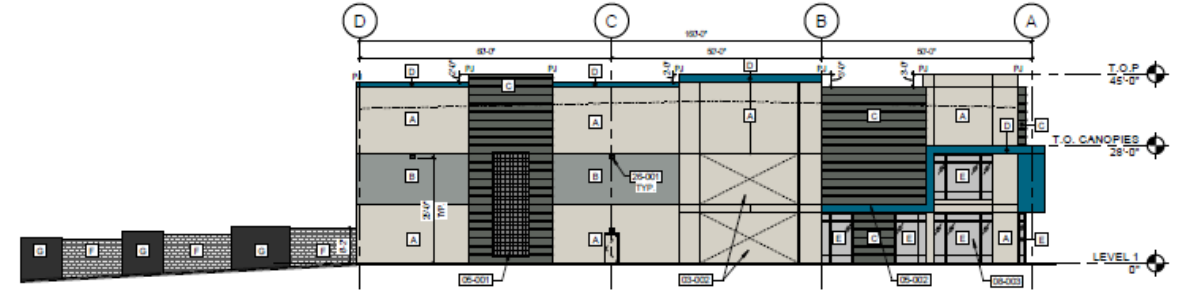
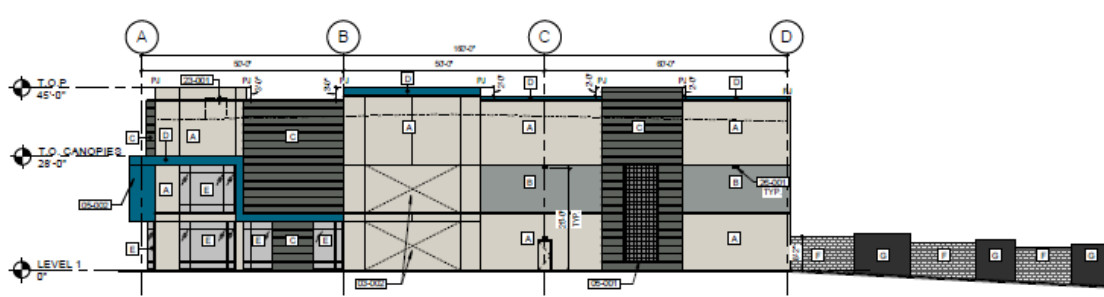
Landscape Plan



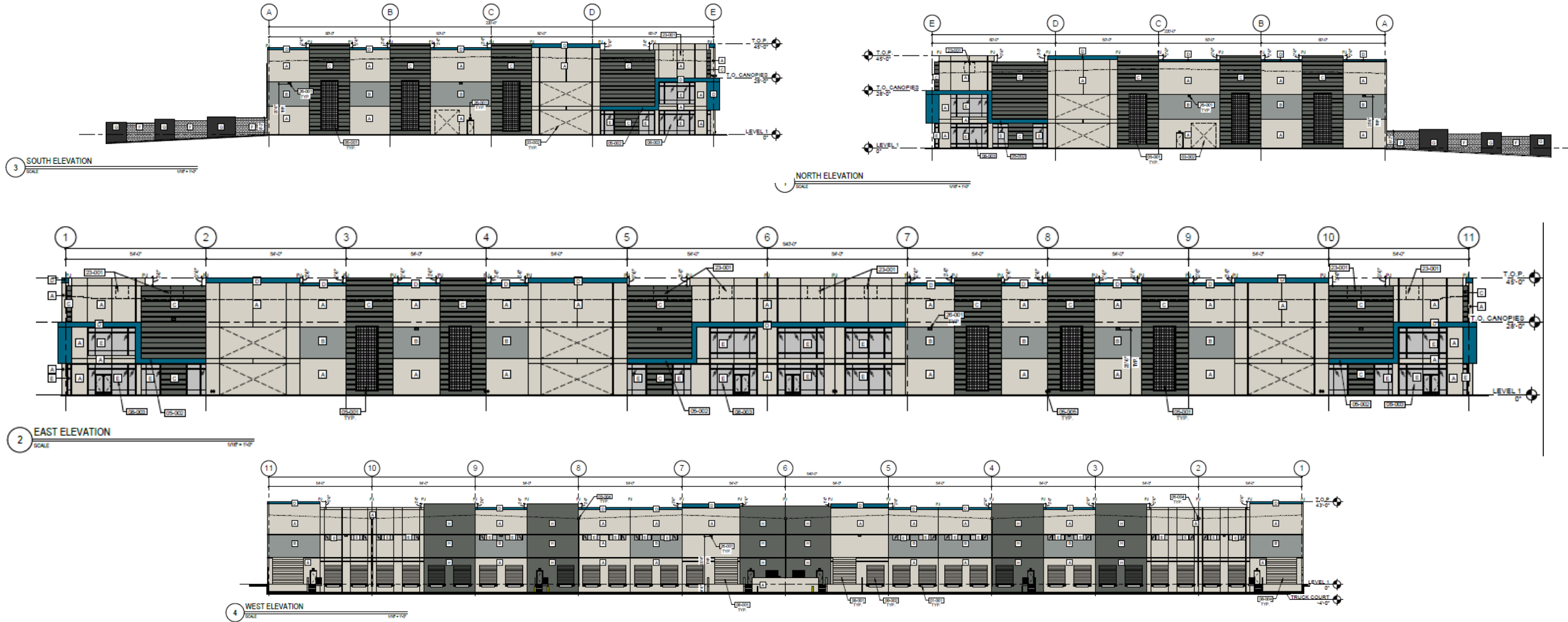
PROPOSED PLANT PALETTE

TREES		SIZE/COMMENT/QTY
PROSOPIS 'COOPERI'	COOPERI MESQUITE	36" BOX / 148 QTY / LOW BREAKING / MATCHED
ACACIA FARNESIANA	SWEET ACACIA	36" BOX / 22 QTY / LOW BREAKING / MATCHED
CERCIDIUM PRAECOX 'AZT #5'	AZT HYBRID PALO BREA	24" BOX / 37 QTY / LOW BREAKING / MATCHED
ULMUS PARVIFOLIA	EVERGREEN ELM	24" BOX / 320 QTY / LOW BREAKING / MATCHED
EBENOPSIS EBANO	TEXAS EBONY	24" BOX / 46 QTY / LOW BREAKING / MATCHED
SHRUBS		SIZE/COMMENT/QTY
HESPERALOE PARVIFLORA	RED YUCCA	5 GAL, 211 QTY
OLEA EUROPAEA 'LITTLE OLLIE'	DIWARF OLIVE	5 GAL, 312 QTY
RUPELLIA PENINSULARIS	BAJA RUELLIA	5 GAL, 581 QTY
SIMMONDSIA CHINENSIS	JOJOBA	5 GAL, 581 QTY
LEUCOPHYLLUM ZYGOPHYLLUM	CIMARRON SAGE	5 GAL, 754 QTY
LEUCOPHYLLUM LANGMANIAE	RIO BRAVO SAGE	5 GAL, 513 QTY
MUHLENBERGIA RIGIDA	NASHVILLE GRASS	5 GAL, 477 QTY
GROUNDCOVERS		SIZE/COMMENT/QTY
LANTANA 'NEW GOLD'	TRAILING YELLOW LANTANA	1 GAL @ 3' O.C., 519 QTY
EREMOPHILA GLABRA 'MIDNEW GOLD'	OUTBACK SUNRISE EMU	1 GAL @ 4' O.C., 1,379 QTY
CHRYSACTINIA MEXICANA	DAMIANITA	1 GAL @ 3' O.C., 617 QTY
ERICAMERIA LARICIFOLIA 'AGUIRRE'	TURPENTINE BUSH	1 GAL @ 4' O.C., 454 QTY
ACACIA REDOLENS 'DESERT CARPET'	TRAILING ACACIA	1 GAL @ 5' O.C., 1,603 QTY
BOUTELOUA 'BLONDE AMBITION'	BLONDE AMBITION GRAMA	1 GAL @ 3' O.C., 361 QTY
EREMOPHILA CARNOSA	WINTER BLAZE EMU	1 GAL @ 4' O.C., 454 QTY
RUPELLIA BRITTONIANA	MEXICAN PETUNIA	1 GAL @ 3' O.C., 590 QTY
INERT MATERIAL		
DG	DECOMPOSED GRANITE ROCK PROS - ROSE	1/2" SCREENED, 2" DEPTH, TYP.
DG1	DECOMPOSED GRANITE ROCK PROS - MOHOGANY	1/2" MINUS, 2" DEPTH, TYP.

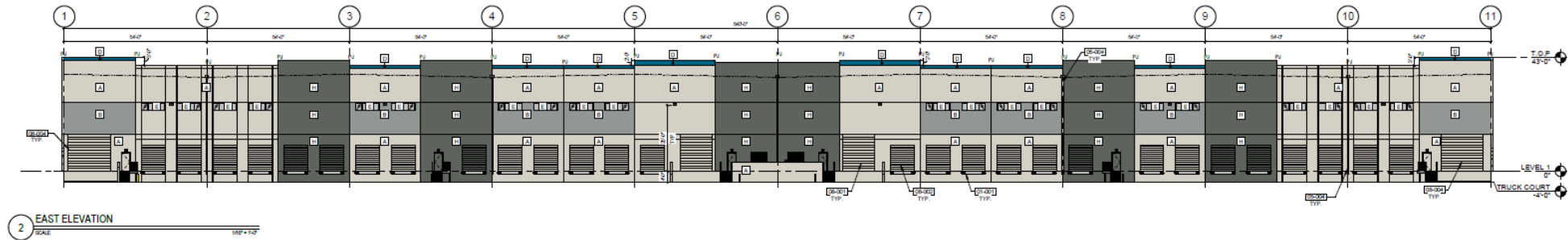
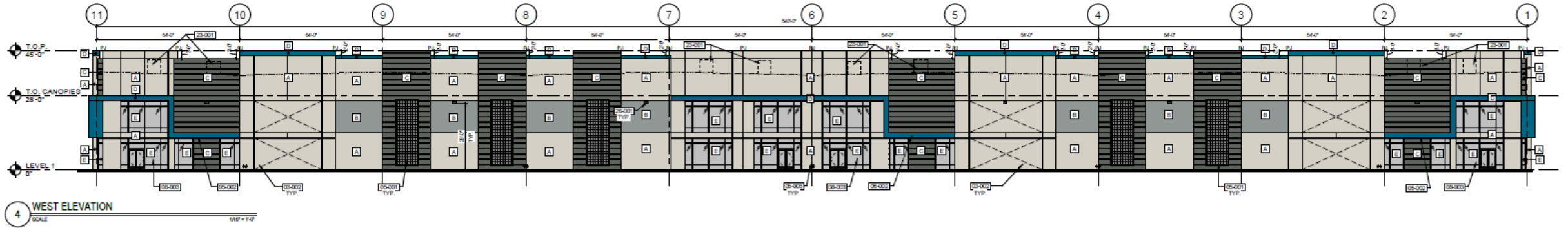
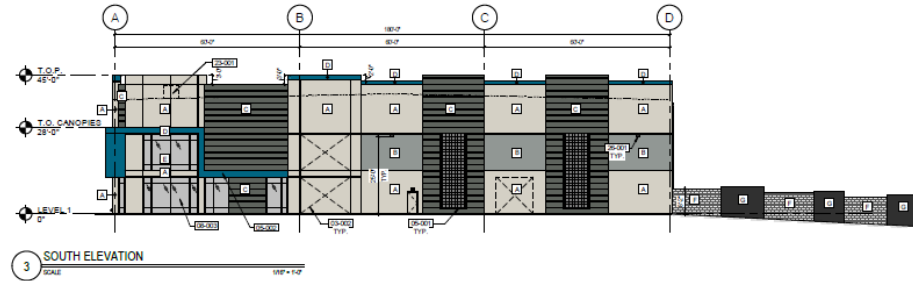
Building Elevations – Building 1



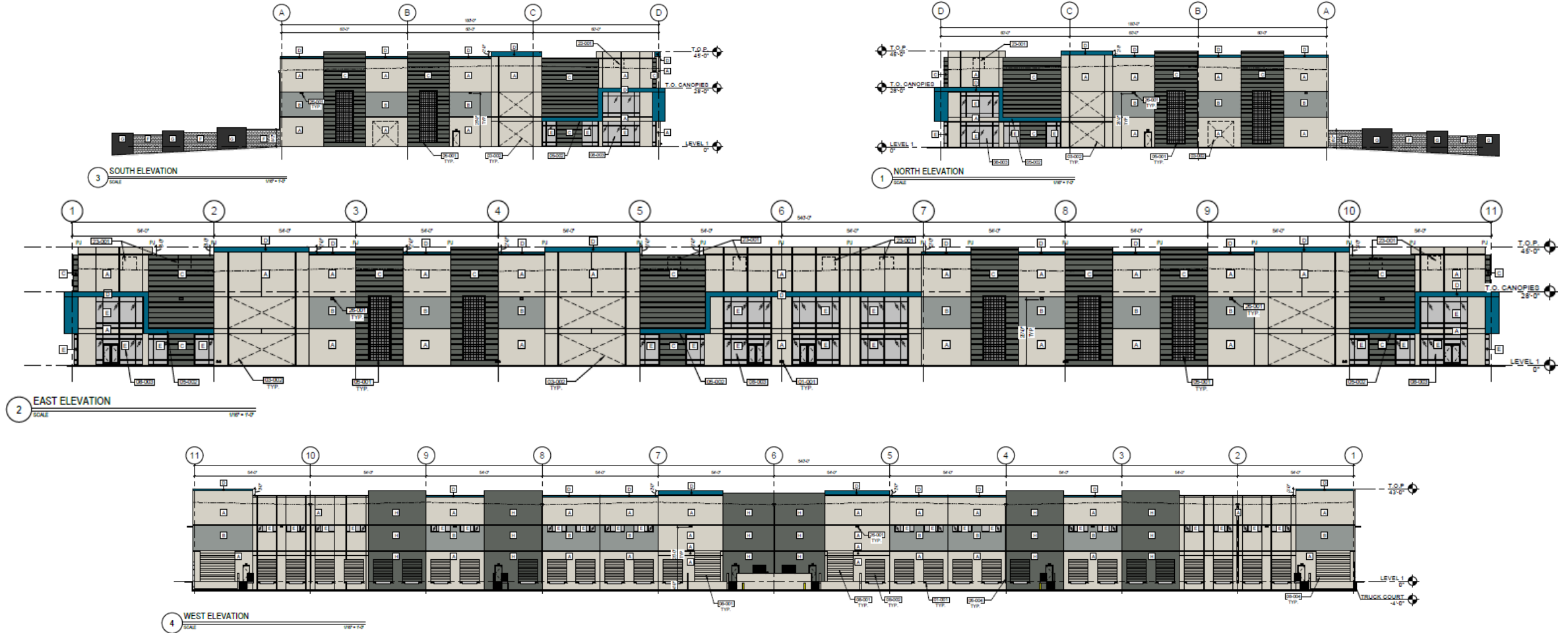
Building Elevations – Building 2



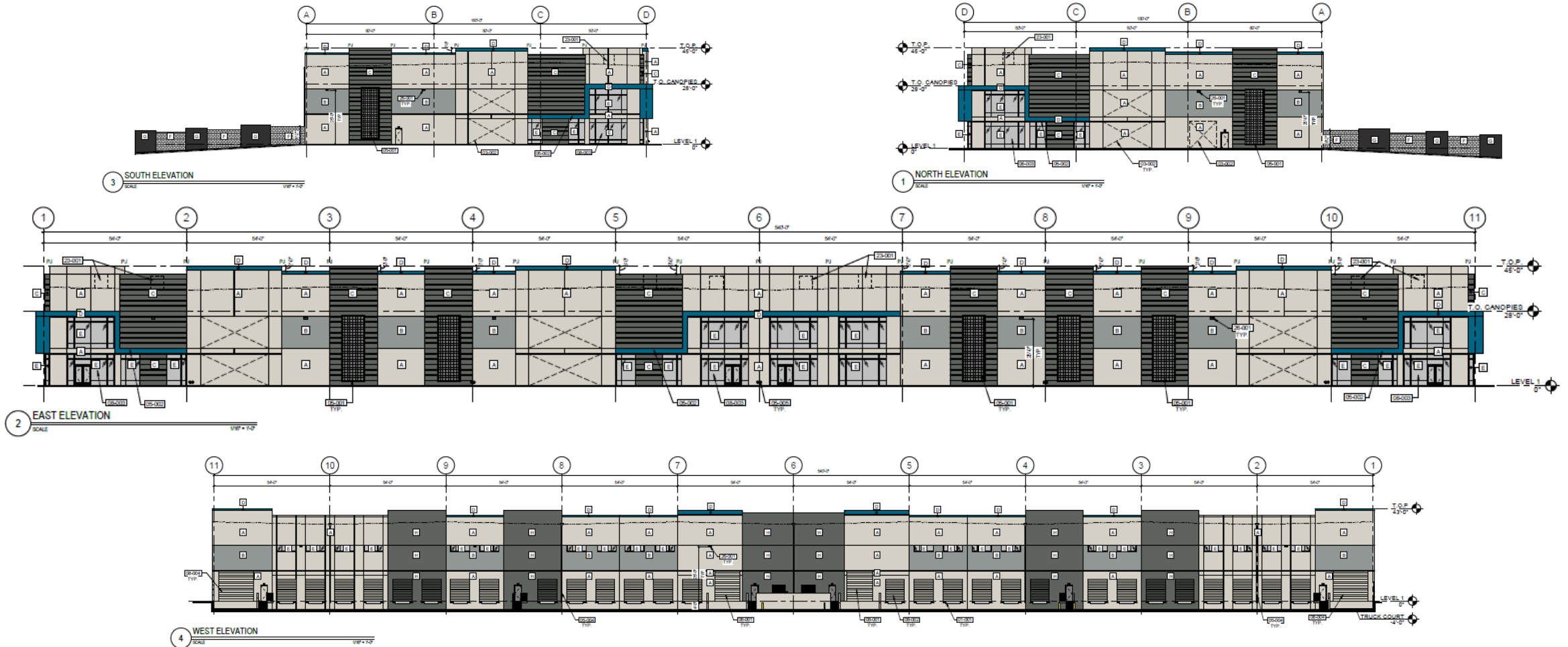
Building Elevations – Building 3



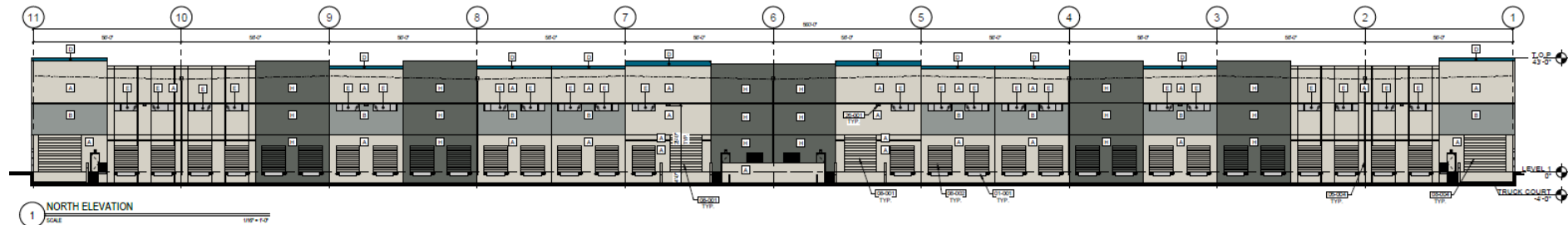
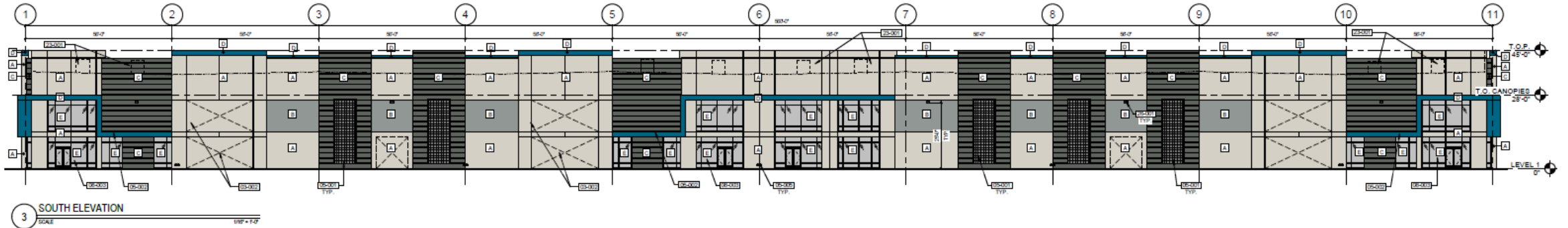
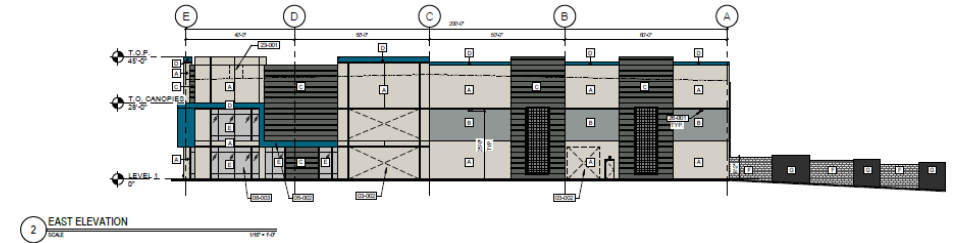
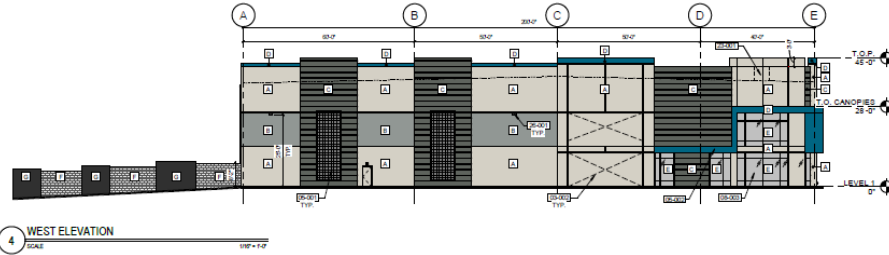
Building Elevations – Building 4



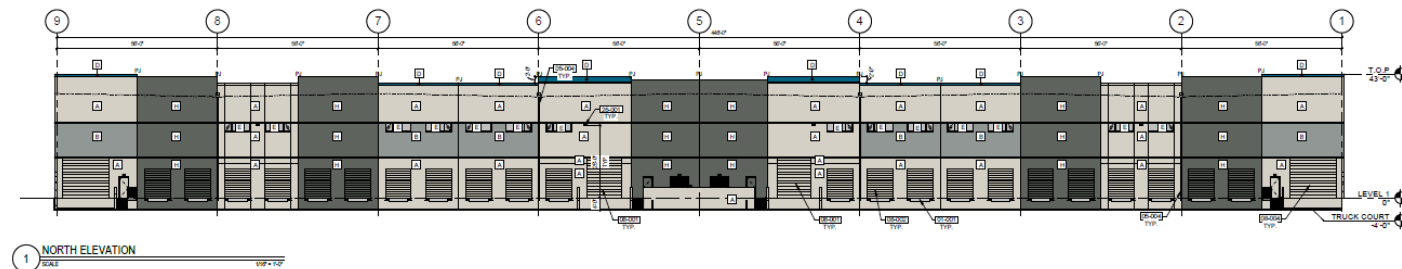
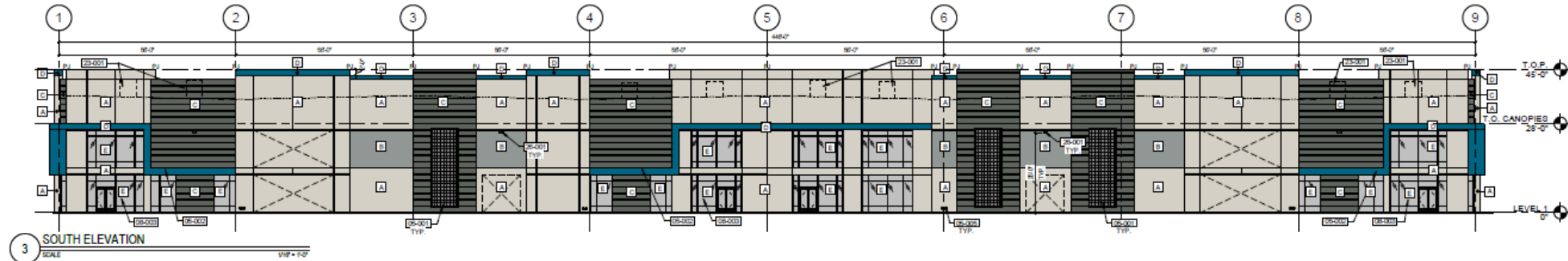
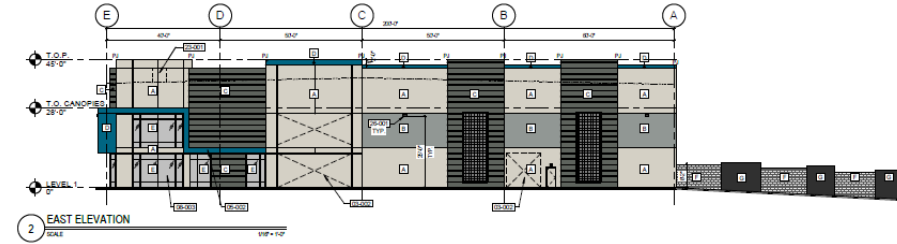
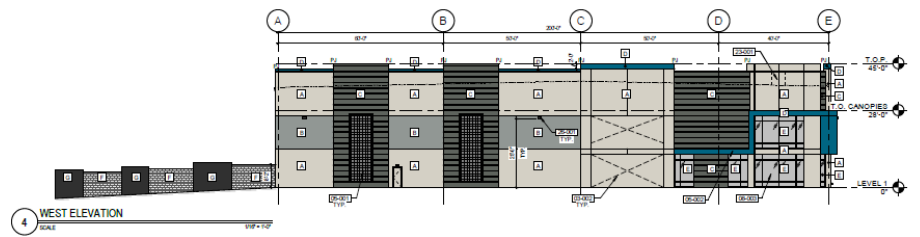
Building Elevations – Building 5



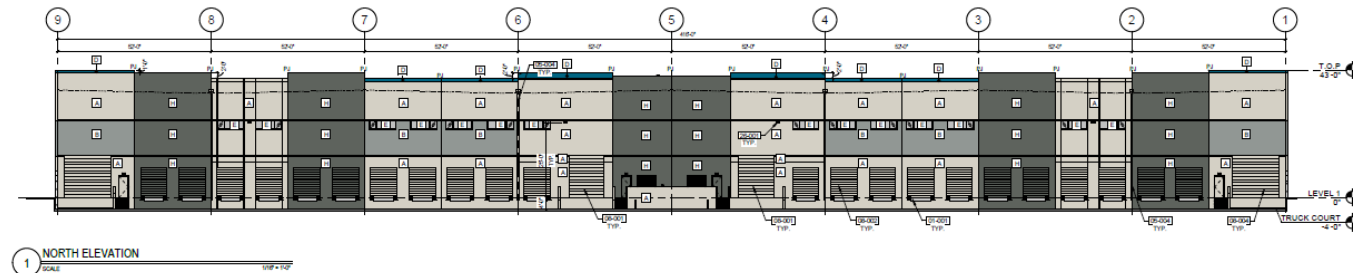
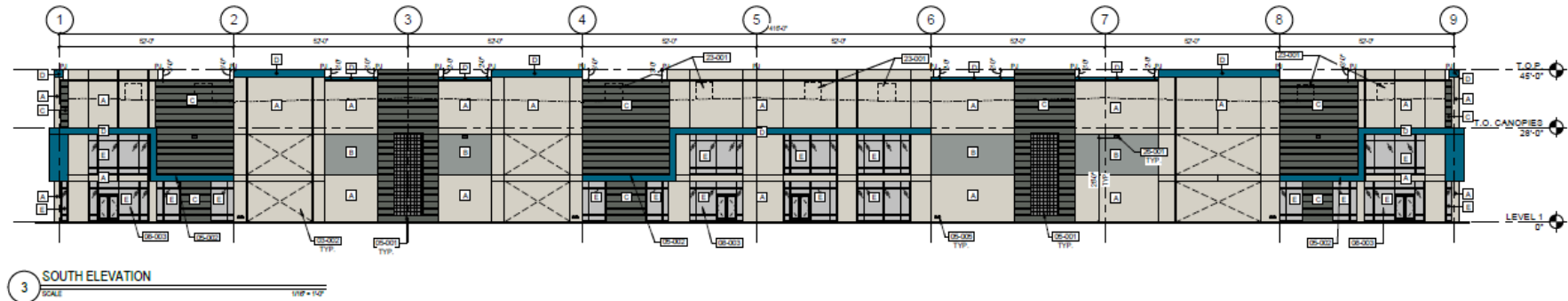
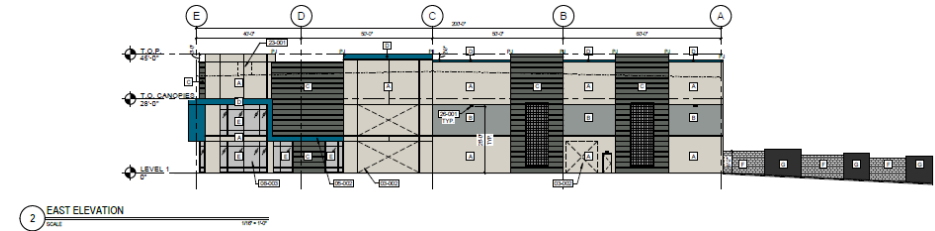
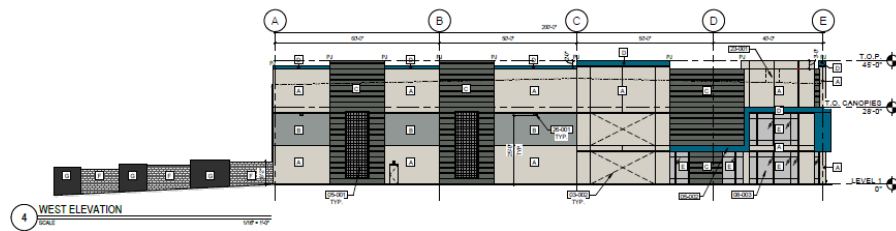
Building Elevations – Building 6



Building Elevations – Building 7



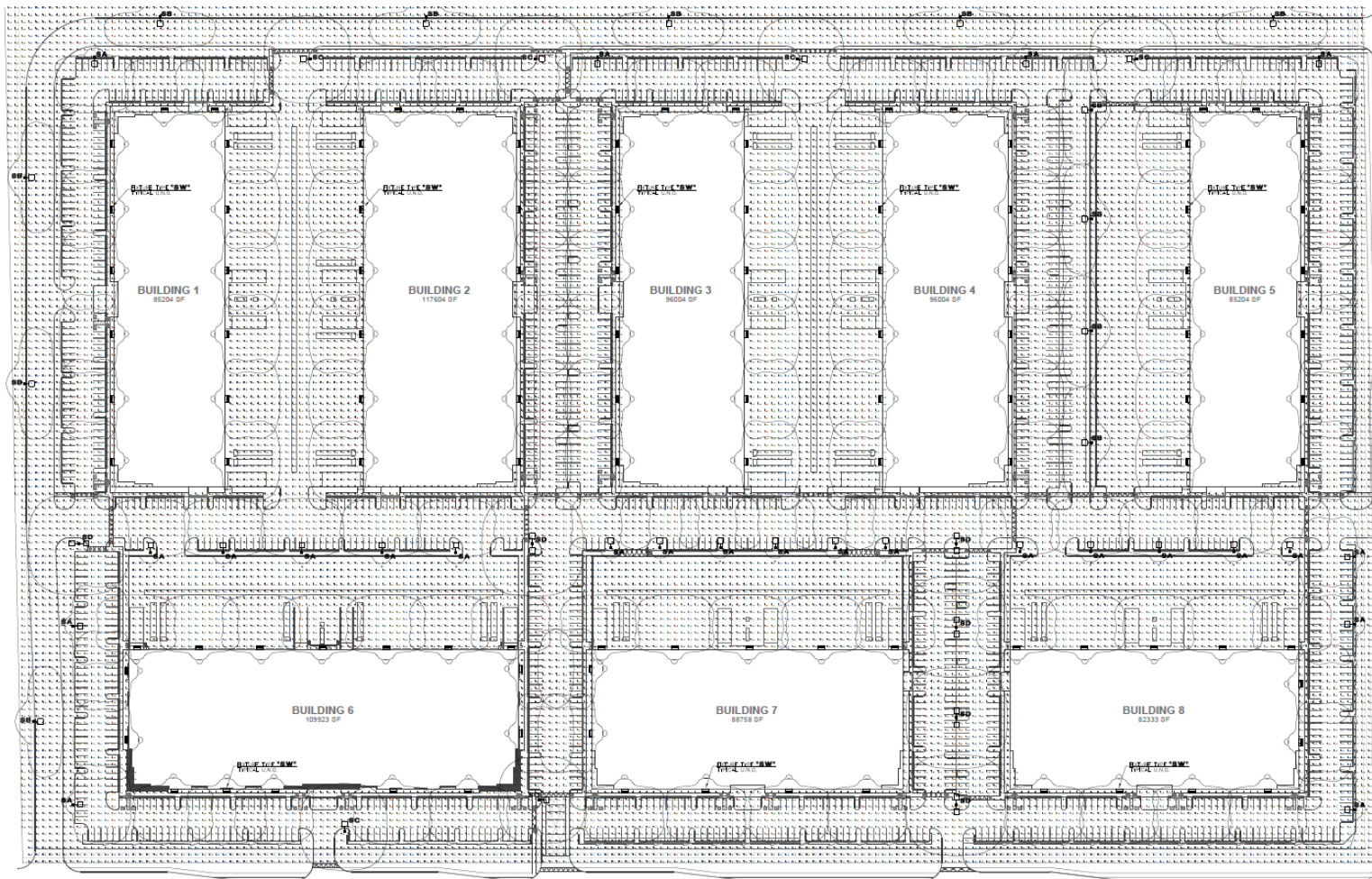
Building Elevations – Building 8



Colors and Materials



Lighting



VIPER Area/Site

VIPER LUMINAIRE

FEATURES

- Low profile LED area/site luminaire with a variety of IES distributions for lighting applications such as auto dealerships, retail, commercial, and campus parking lots.
- Featuring two different optical technologies, Strike and Micro Strike Optics, which provide the best distribution patterns for retrofit or new construction.
- Rated for high vibration applications including bridges and overpasses. All sizes are rated for 15G.
- Control options including photo control, occupancy sensing, NK Distributed Intelligence™, vSCAPE, and 3-Phi with networked controls.
- New customizable lumen output feature allows for the voltage and lumen output to be customized in the factory to meet whatever specification requirements may exist.
- Field interchangeable mounting provides additional flexibility after the fixture has shipped.



CONTROL TECHNOLOGY

NK DISTRIBUTED INTELLIGENCE™

vSCAPE

SPECIFICATIONS

CONSTRUCTION

- One coat powder coating with hidden vertical heat fins are optional for heat dissipation while keeping a clean smooth outer surface.
- Corrosion resistant, die-cast aluminum housing with 1000-hour powder coat paint finish.
- External hardware is corrosion resistant.
- Optics: Micro Strike Optics (95, 105, 480 or 720 LED counts) provide uniformity in applications and come standard with mid-gloss LEDs which evenly illuminate the entire luminaire surface area to provide a low glare appearance. Catalog logic found on page 2.
- Strike Optics (95, 105, 480 or 720 LED counts) provide field or class 200 sub-automated maximum pole spacing in new applications with high powered LEDs. Strike optics are field in place with a polycarbonate lens to mimic the appearance of the Micro Strike Optics so both solutions can be combined in the same application. Catalog logic found on page 3.
- Both optics maximize targeted zone illumination with minimal losses at the house-top, reducing light trespass issues. Additional backlight control shields and house side shields can be added for further reduction of illumination behind the pole.
- One-piece silicone gasket ensures a weatherproof seal.
- Zero up-light at 0 degrees of tilt.
- Field replaceable optics.

INSTALLATION

- Mounting patterns for each arm can be found on page 11.
- Optional universal mounting block for ease of installation during retrofit applications. Available as an option (MSQ) or accessory for square and round poles.
- All mounting hardware included.

INSTALLATION (CONTINUED)

- Enclosed arm fixture available for 2-3/8" OD lumen.
- For products with EPA less than 1 mounted to a pole greater than 20K, a vibration damper is field standard.

ELECTRICAL

- Universal 120-277 VAC or 347-480 VAC input voltage, 50/60 Hz.
- Ambient operating temperature -40°C to 40°C.
- Drivers have greater than 90% power factor and less than 20% THD.
- LED drivers have output power over-voltage, over-current protection and short circuit protection with auto recovery.
- Field replaceable surge protection device provides 20kA protection meeting ANSI/IEEE C82.41.3 Category C High and Surge Protection Category C3. Automatically takes future advance for protection where device is compromised.

CONTROLS

- Photo control, occupancy sensor programmable controls, and Zigbee wireless controls available for complete on/off and dimming control.
- Please consult brand or sales representative when combining control and electrical options as some combinations may not operate as anticipated depending on your application.
- Five ANSI C82.41.3-2010 photovoltaic compatible options available: for field top, photocell or wireless control modules (some accessories sold separately).
- 0-10V Dimming Drivers are standard and dimming leads are extended out of the luminaire unless control options require connection to the dimming leads. Must specify dimming leads are to be greater than the 6" standard.

PICTURE TYPES: "SA", "SB", "SC", "SD", "SE", "SW"

DATE: LOCATION:
TYPE: PROJECT:
CATALOG #:

MICROSTRIKE STRIKE



CONTROLS (CONTINUED)

- NK Distributed Intelligence™ available with in fixture wireless control module, features dimming and occupancy sensor.
- vSCAPE available with in fixture wireless control module, features dimming and occupancy sensor. Also available in 5-pin configuration.
- CERTIFICATIONS: Meets the qualifications for DLC Premium.
- Listed to UL9840 and CSA C22.2 #598-24 for wet locations and 40°C ambient temperatures.
- 1.5 G rated for ANSI C82.31 high-vibration applications.
- Fixture is IP65 rated.
- Meets DA recommendations using 3K OCT over 100 ft at 0 degrees of tilt.
- This product qualifies as a "designated recycling construction material" per FAR 27.220-8 Buy American Construction Materials and Trade Agreements effective 04/23/2020. See Buy American Solutions.

WARRANTY

- 5 year warranty.
- See HLI Commercial and Industrial Outdoor Lighting Website for additional information.

KEY DATA	
Lumen Range	5,000-80,000
Voltage Range	36-480
Efficiency Range (lm/W)	92-105
Weight (kg)	6.7-30.8 (15-68.5)

Page 102/103 - 06/2023
VIPA VAPER & VAPER

© 2023 Beacon Products a division of Hubbell Lighting, Inc. Specifications subject to change without notice.
300 Main Street, Danvers, MA 01923 | 800.445.4455 | 978.750.4455 | www.beaconproducts.com

HUBBELL
Lighting

Alternative Compliance

11-7-3

Publicly visible facades (i.e., viewed from rights-of-way or private property), may not have blank, uninterrupted wall lengths exceeding 50-feet

Facades shall incorporate 3 different materials

No more than 50% of façade may be covered in one material

Summary

Findings

- ✓ Staff is seeking your review and recommendation on the following:
 - Alternative Compliance for materials, vertical modulation, and parapet detailing
- Staff welcomes any feedback



DESIGN REVIEW BOARD

September 13, 2022