



7330 EAST EARLL DRIVE #A
SCOTTSDALE, ARIZONA 85251
PHONE: 480-990-2120
FAX: 480-990-2130

ARCHITECTURE
PLANNING INTERIORS

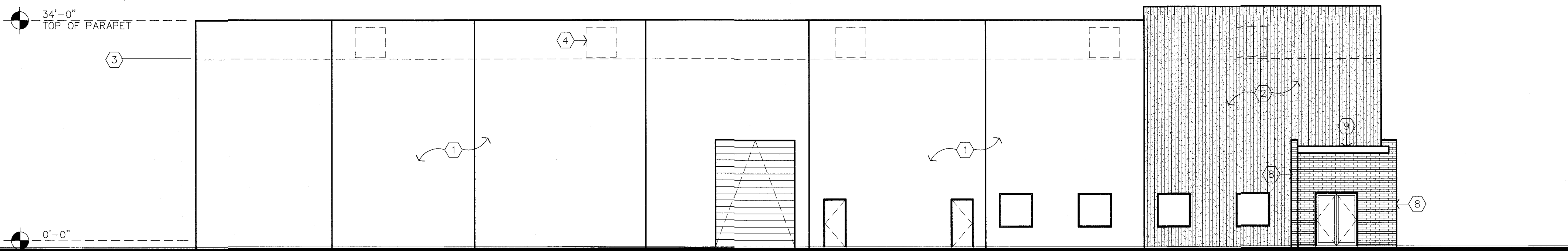
OWNERSHIP OF DOCUMENTS
THESE DRAWINGS AND SPECIFICATIONS ARE INSTRUMENTS
OF SERVICE AND SHALL REMAIN THE PROPERTY OF
ALMOND ADG. WHETHER THE PROJECT FOR WHICH
THEY WERE PREPARED IS COMPLETED OR NOT. THESE
DOCUMENTS ARE NOT TO BE REPRODUCED, ASSIGNED OR
LOANED IN ANY MANNER WITHOUT THE WRITTEN
CONSENT OF ALMOND ADG. ANY REPRODUCTION OR
EXTENSION TO THIS PROJECT EXCEPT BY AGREEMENT IN
WRITING, VIOLATION OF THIS IS A DIRECT VIOLATION OF
STATE AND FEDERAL COPYRIGHT INFRINGEMENT LAWS.
©2022 ALMOND ADG
ALL RIGHTS RESERVED
NO LIABILITY IS ASSUMED FOR ANY DEVIATIONS
FROM THESE DOCUMENTS.

FINISH LEGEND

- BASE CONCRETE PANEL:
SMOOTH TEXTURE
DUNN EDWARDS DE 6367
% OF FRONT WALL: 2,370 S.F. (37.3%)
- ACCENT CONCRETE PANEL:
VERTICAL FRACTURED FINIS
"SYMONS" 1" FRACTURED FORM LINER
DUNN EDWARDS DE 6369
% OF FRONT WALL: 3,025 S.F. (47.5%)
- USED BRICK
RED W/ WHITE STREAKS
% OF FRONT WALL: 570 S.F. (9%)
- METAL CANOPIES:
DUNN EDWARDS DE 6370
- STOREFRONT
MILL FINISH
% OF FRONT WALL: 2392 S.F. (6.2%)

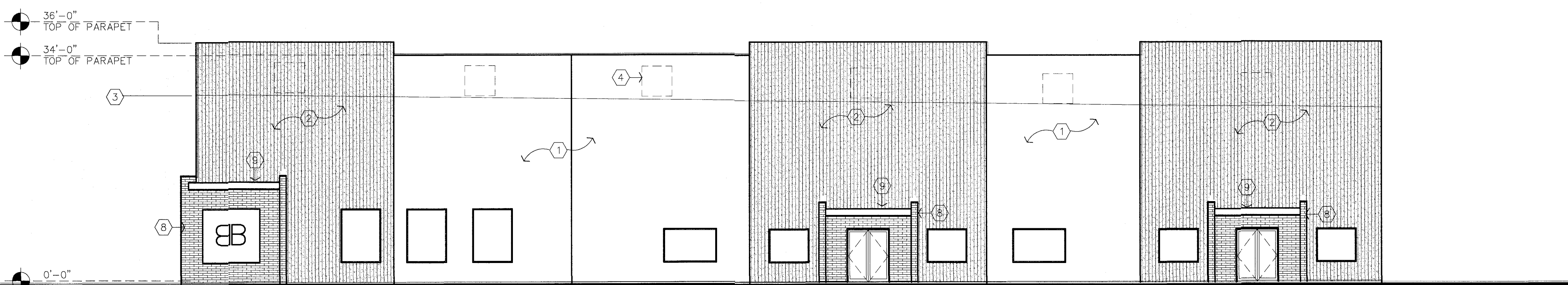
KEY NOTES

- 8" THICK CONCRETE PANEL. SMOOTH TEXTURE. PAINT.
- 10" THICK CONCRETE PANEL. 2" POP-OUT ON EXTERIOR SIDE. FRACTURED FINIS. PAINT.
- LINE OF ROOF BEYOND.
- A/C EQUIPMENT BEYOND. FULLY SCREENED.
-
- ROOF DRAIN SCUPPER AND DOWN LEADER. PAINT.
- RECESSED TRUCK DOCK.
- BRICK VENEER.
- METAL CANOPY. PAINT.



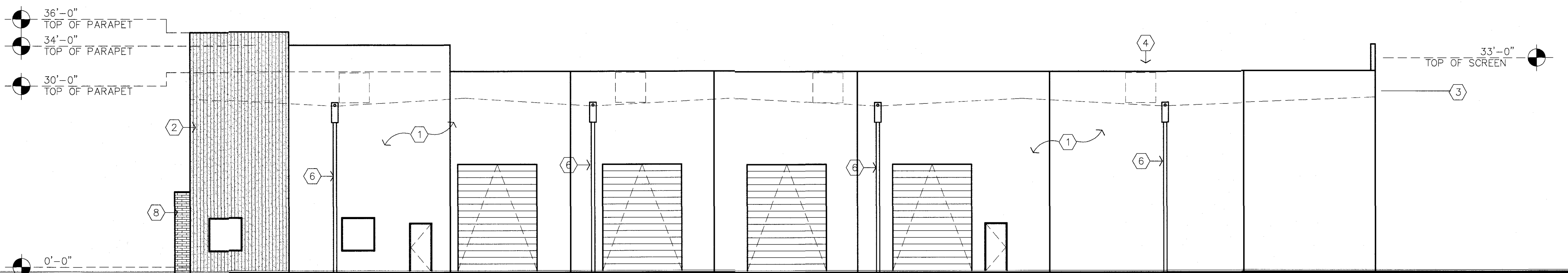
SOUTH ELEVATION

SCALE: 3/32"=1'-0"



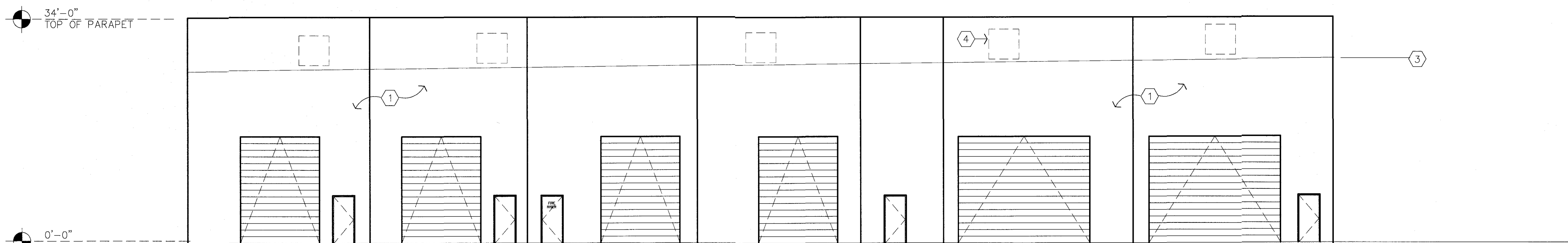
WEST ELEVATION

SCALE: 3/32"=1'-0"



NORTH ELEVATION

SCALE: 3/32"=1'-0"



EAST ELEVATION

SCALE: 3/32"=1'-0"

DO NOT SCALE DRAWINGS

ELEVATIONS

OFFICE/WAREHOUSE
4114 EAST VALLEY AUTO DRIVE
MESA, ARIZONA 85206

job no: 22124
date: 6-30-22
revisions:

sheet A8.1