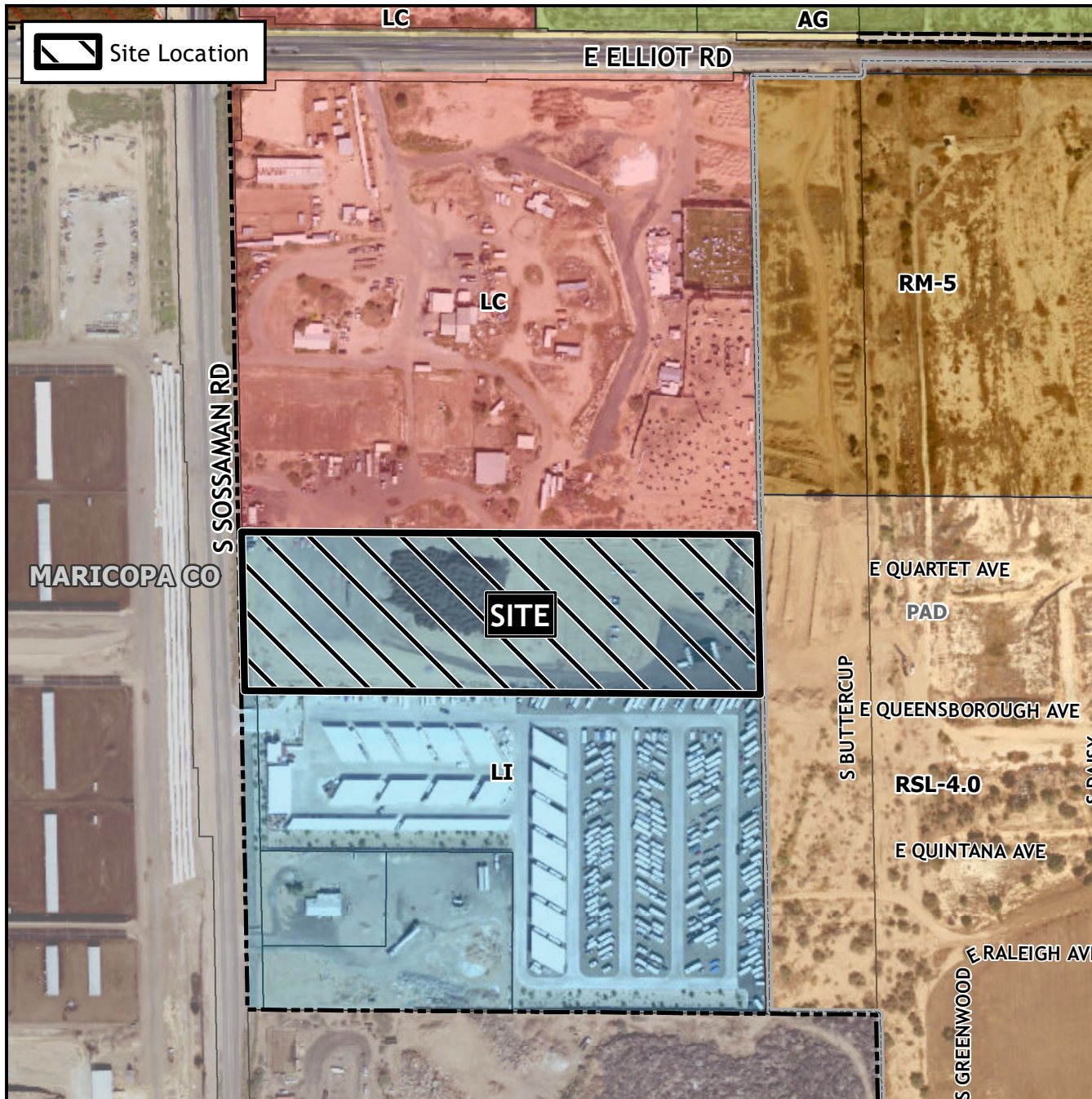


# Design Review Vicinity Map: DRB22-00683



## Case Details

### Case:

DRB22-00683

### Site / Address:

District 6. Within the 3700 to 3900 blocks of South Sossaman Road (east side). Located south of Elliot Road on the east side of Sossaman Road. (20± acres).

### Request:

Design Review to expand an existing mini-storage facility with boat and recreational vehicle storage.

