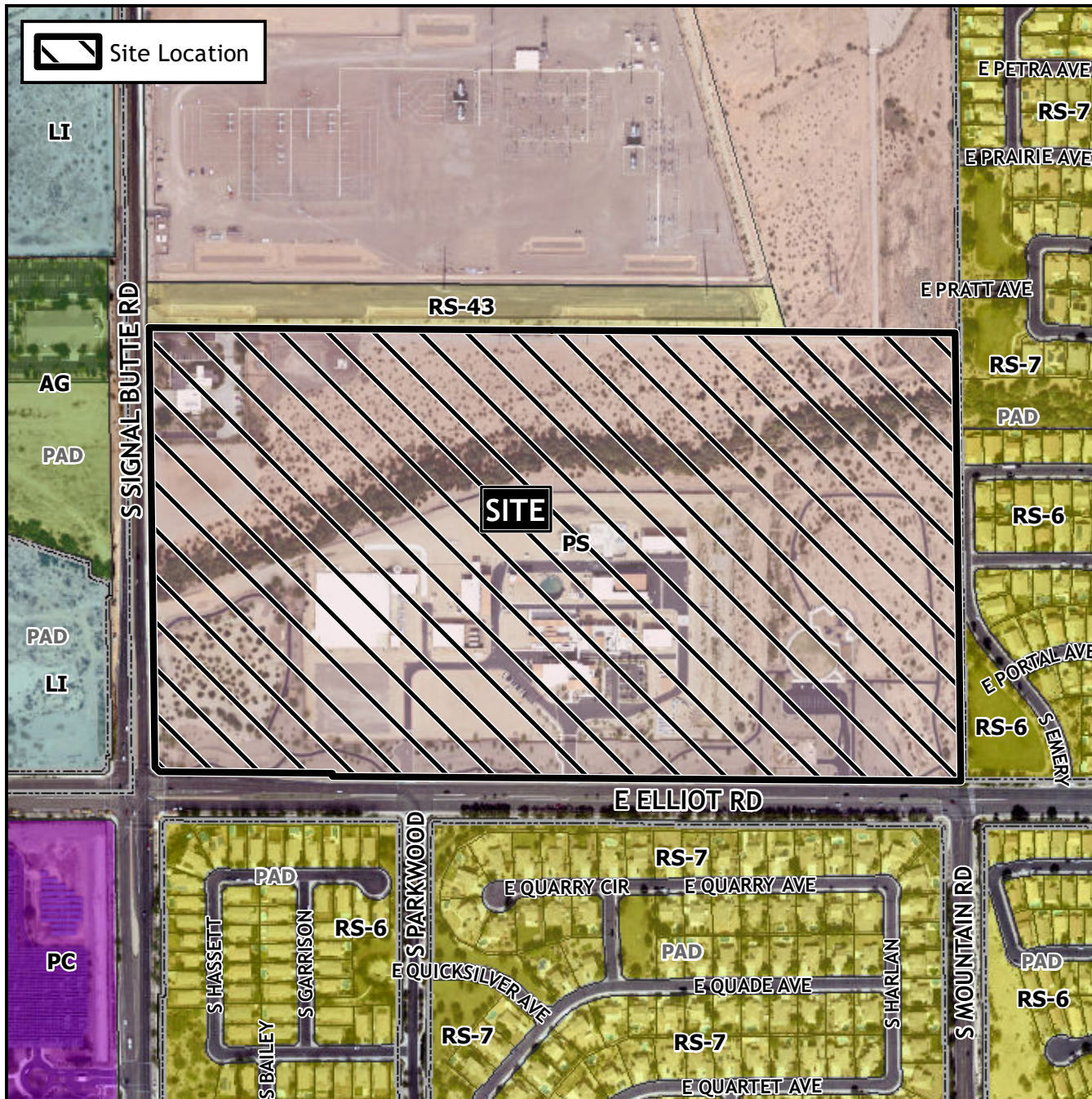


Design Review Vicinity Map: DRB22-00685

Case Details



Case:

DRB22-00685

Site / Address:

District 6. Within the 10900 to 11000 block of East Elliot Road (north side), and within the 3500 block of South Signal Butte Road (east side). Located north of Elliot Road and east of Signal Butte Rd (84± acres).

Request:

Design Review for an expansion of a water treatment facility.

