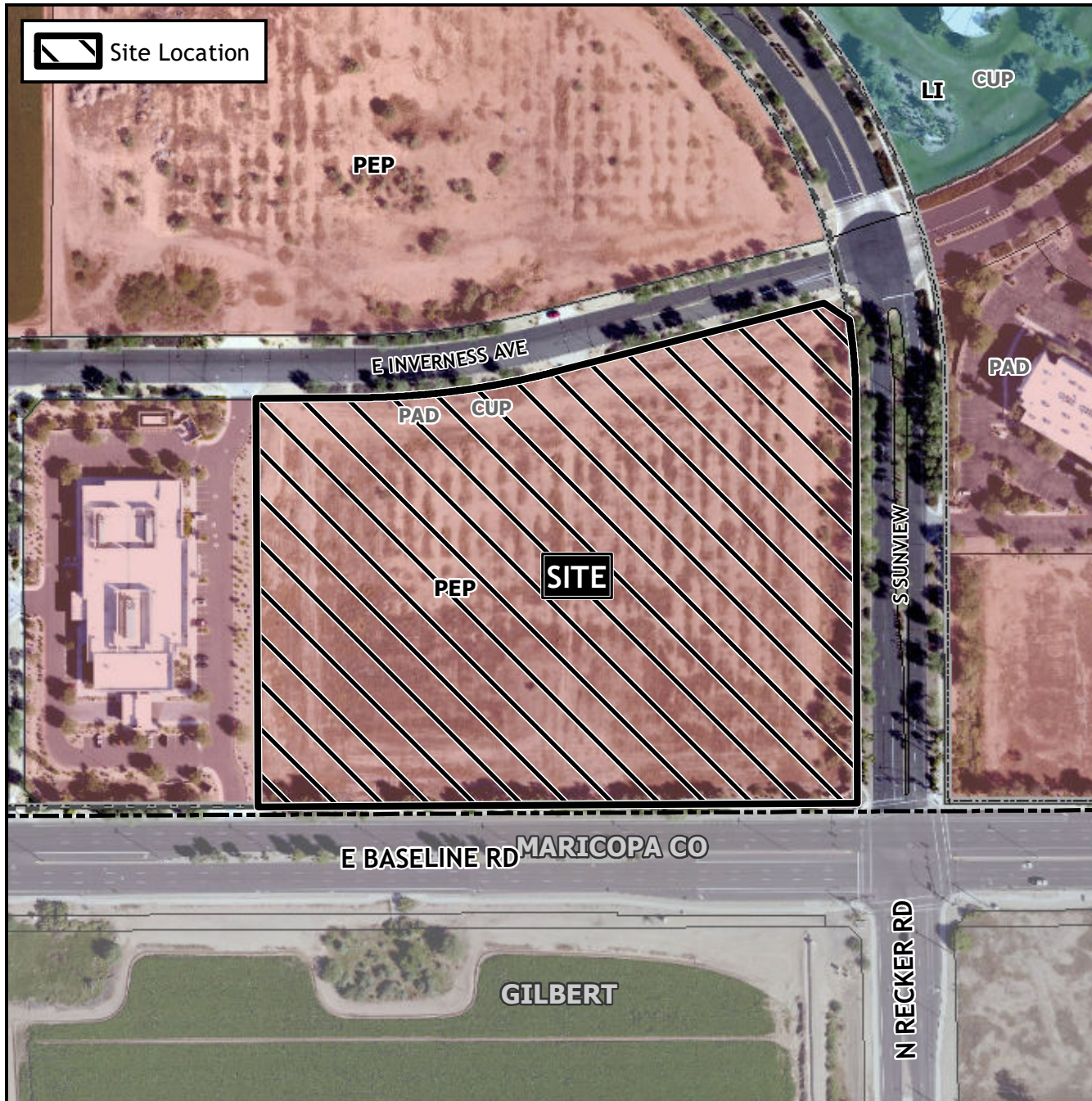


## Design Review Vicinity Map: DRB22-00644

## Case Details



### Case:

DRB22-00644

### Site / Address:

District 2. Within the 5700 to 5900 blocks of East Baseline Road (north side), within the 1800 to 1900 blocks of South Sunview (west side), and within the 5700 to 5900 blocks of East Inverness Avenue (south side). Located west of Recker Road on the north side of Baseline Road. (10± acres).

### Request:

Design Review for a multiple residence development.

