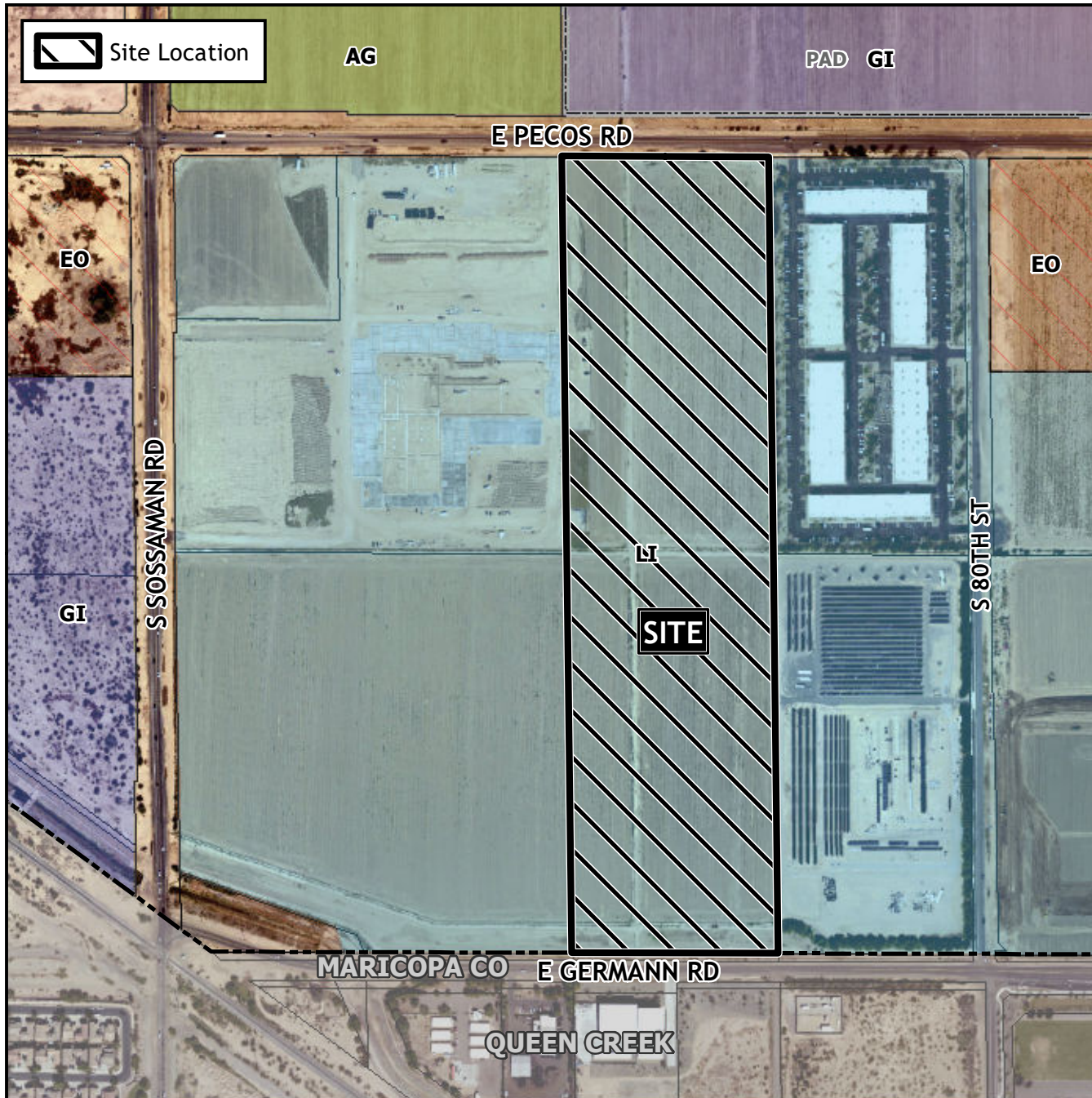


## Design Review Vicinity Map: DRB22-00438



## Case Details

### Case:

DRB22-00438

### Site / Address:

District 6. Within the 7800 to 7900 blocks of East Pecos Road (south side) and within the 7800 to 7900 blocks of East Germann Road (north side). Located east of Sossaman Road on the south side of Pecos Road. (40.2± acres).

### Request:

Design Review for an industrial development.

