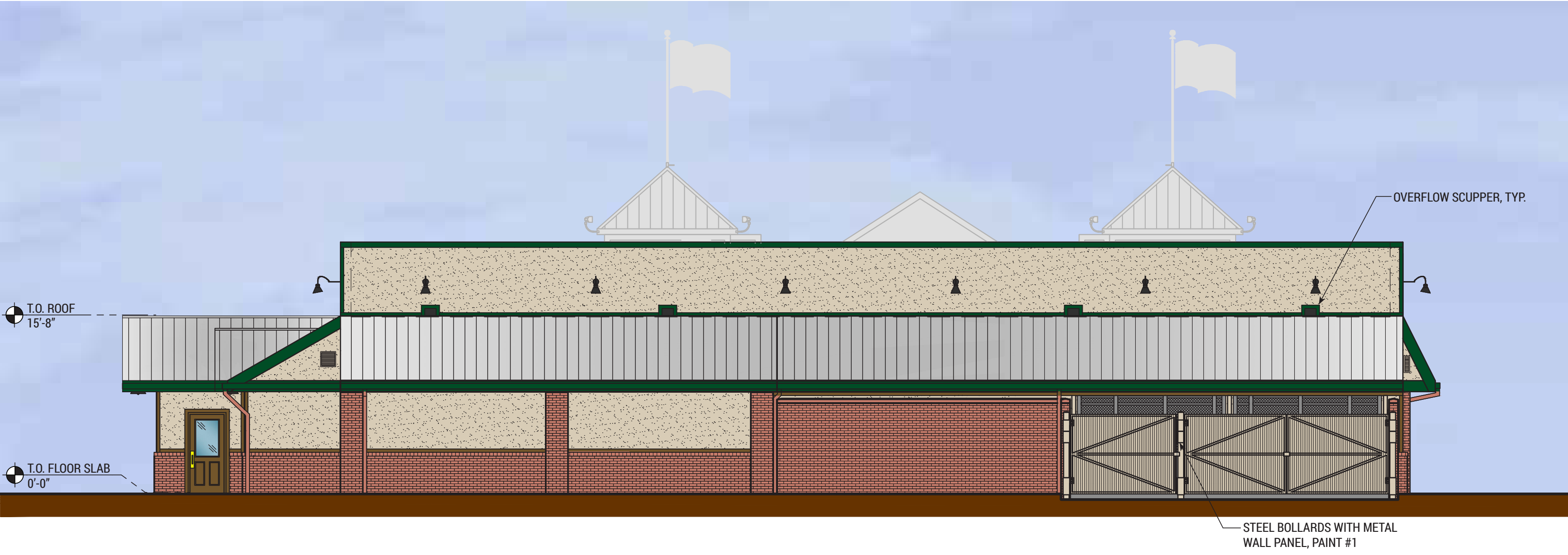


RIGHT ELEVATION (SOUTH)



REAR ELEVATION (EAST)



LEFT ELEVATION (NORTH)



FRONT ELEVATION (WEST)

EXTERIOR FINISH SCHEDULE	
FIBER CEMENT BOARD DOOR & WINDOW TRIM	ALLURA, TEXTURED WOODGRAIN, COLOR: "SUMMER WHEAT"
STUCCO, DUMPSTER GATES & BOLLARDS	PAINT #1: SHERWIN WILLIAMS PAINTS, STUCCO SW 7569
FRONT ENTRANCE DOORS	METAL DOORS (FAUX WOOD) CECO DOORS, "MADERA" (CS-6 "NUTMEG" FINISH)
FASCIA, TRIM, METAL FLASHING, & GUTTERS	PAINT #2: SHERWIN WILLIAMS PAINTS, GREEN CUSTOM COLOR
SHUTTERS	WHOLESALE MILLWORK, HIGH DENSITY POLYURETHANE, PAINT TO MATCH FIBER CEMENT COLOR, CUSTOM COLOR
DOWNSPOUTS, METAL DOORS & FRAMES	PAINT #3: SHERWIN WILLIAMS PAINTS, ROJO DUST SW 9006
BRICK VENEER	GENERAL SHALE, BAYSTONE VELOUR
METAL ROOF	METAL SALES, 5V-CRIMP, GALVALUME

DISCLAIMER NOTE:
THE COLORS DEPICTED ON THESE ELEVATIONS ARE FOR GRAPHIC REPRESENTATION PURPOSES ONLY.
PLEASE REFER TO MATERIAL BOARD FOR ACTUAL SAMPLE OF COLORS AND TEXTURES