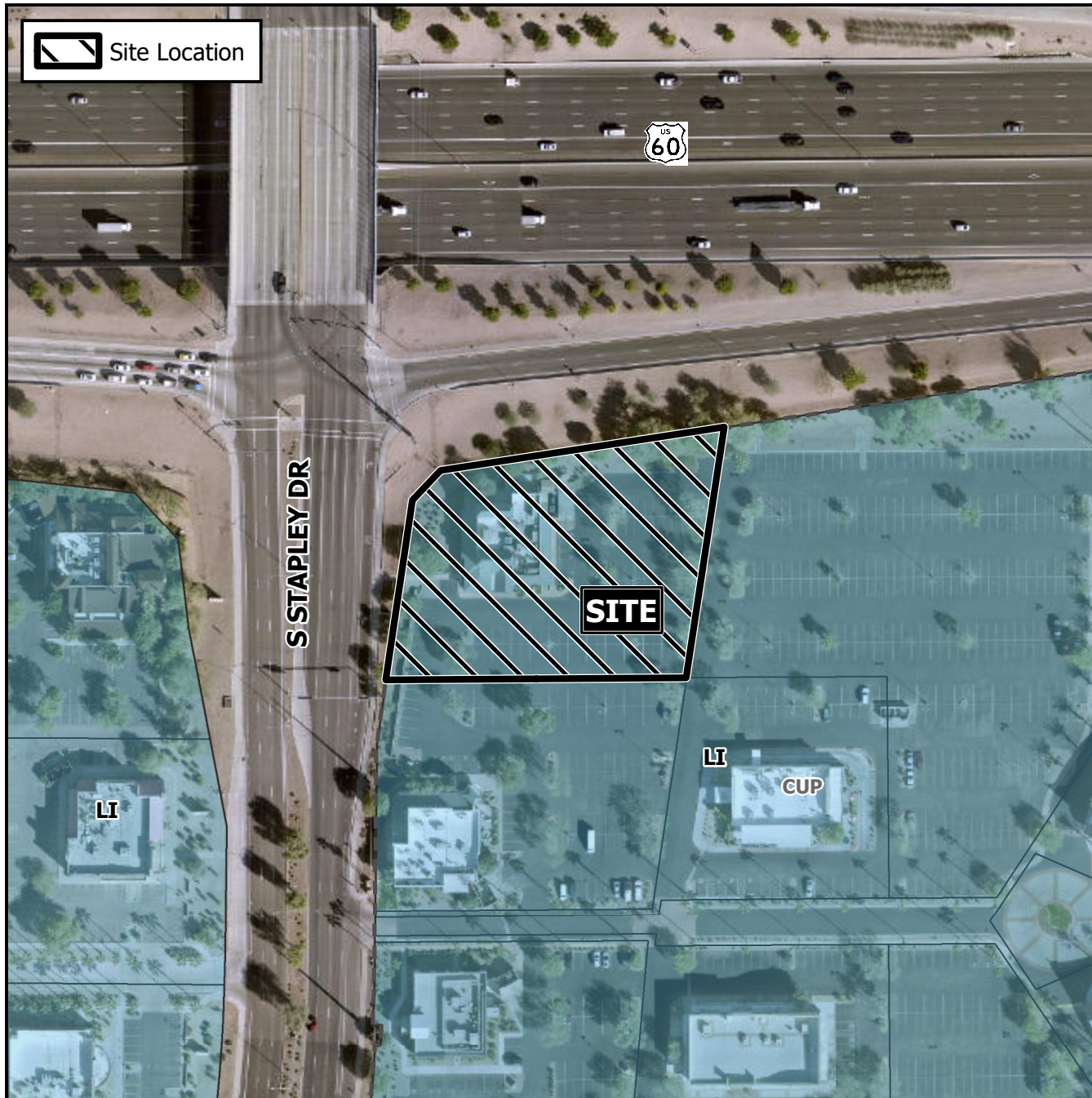


# Design Review Vicinity Map: DRB22-00044

## Case Details



### Case:

DRB22-00044

### Site / Address:

District 4. Within the 1600 block of South Stapley Drive (east side). Located south of the US 60 Superstition Freeway on the east side of Stapley Drive. (1.5± acres).

### Request:

Design Review for a restaurant.

