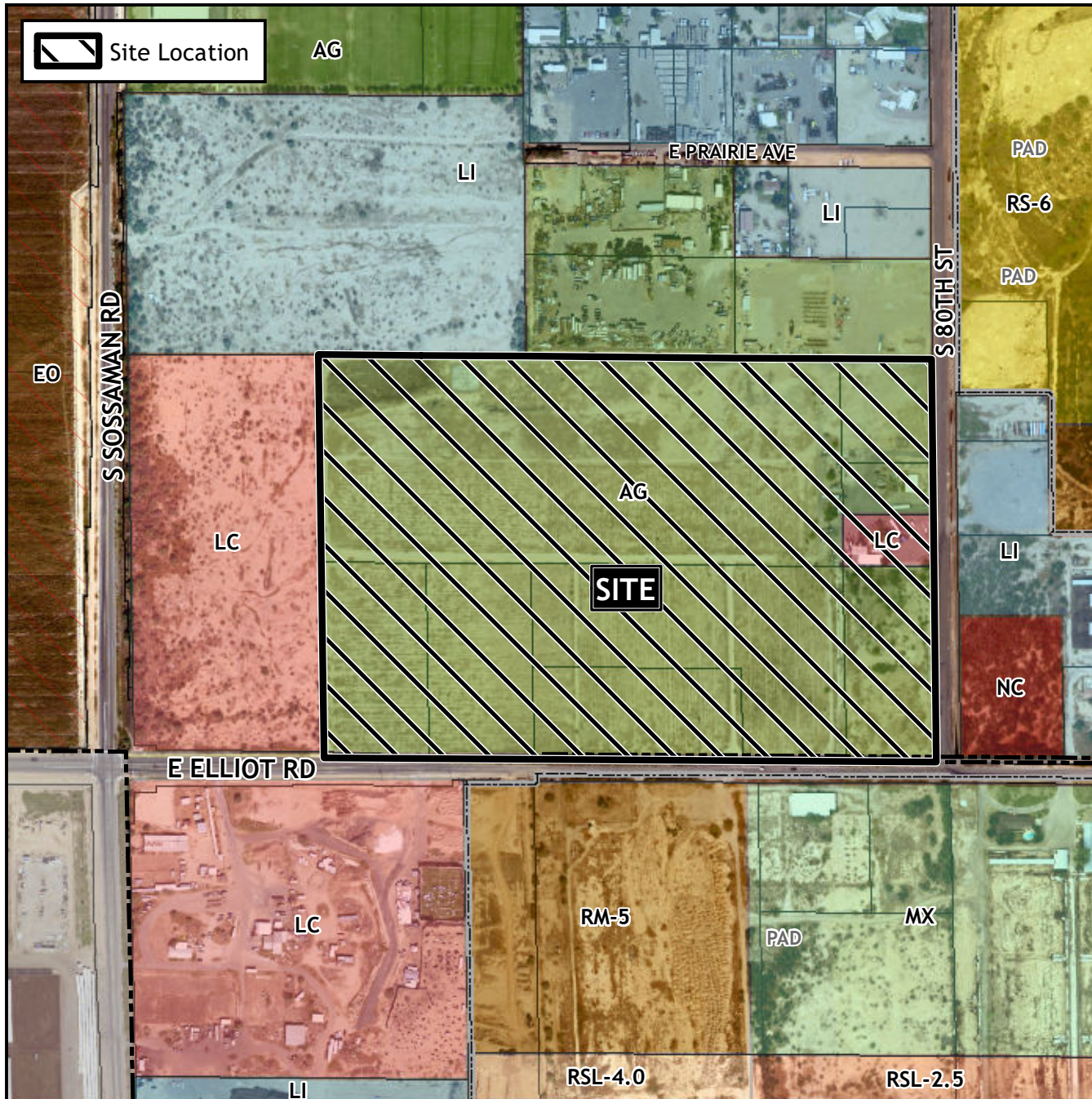


Planning and Zoning Vicinity Map: ZON22-00607



Case Details

CASE:

ZON22-00607

PRE-PLAT : ☒

SITE / ADDRESS:

District 6. Within the 7600 to 8000 blocks of East Elliot Road (north side) and within the 3300 to 3600 blocks of South 80th Street (west side). Located east of Sossaman Road and north of Elliot Road. (58+ acres).

REQUEST:

Rezone from Agriculture (AG), Limited Commercial (LC) and Single Residence 43 (RS-43) to Light Industrial with a Planned Area Development Overlay (LI-PAD) and Site Plan Review. This request will allow for an industrial development.

