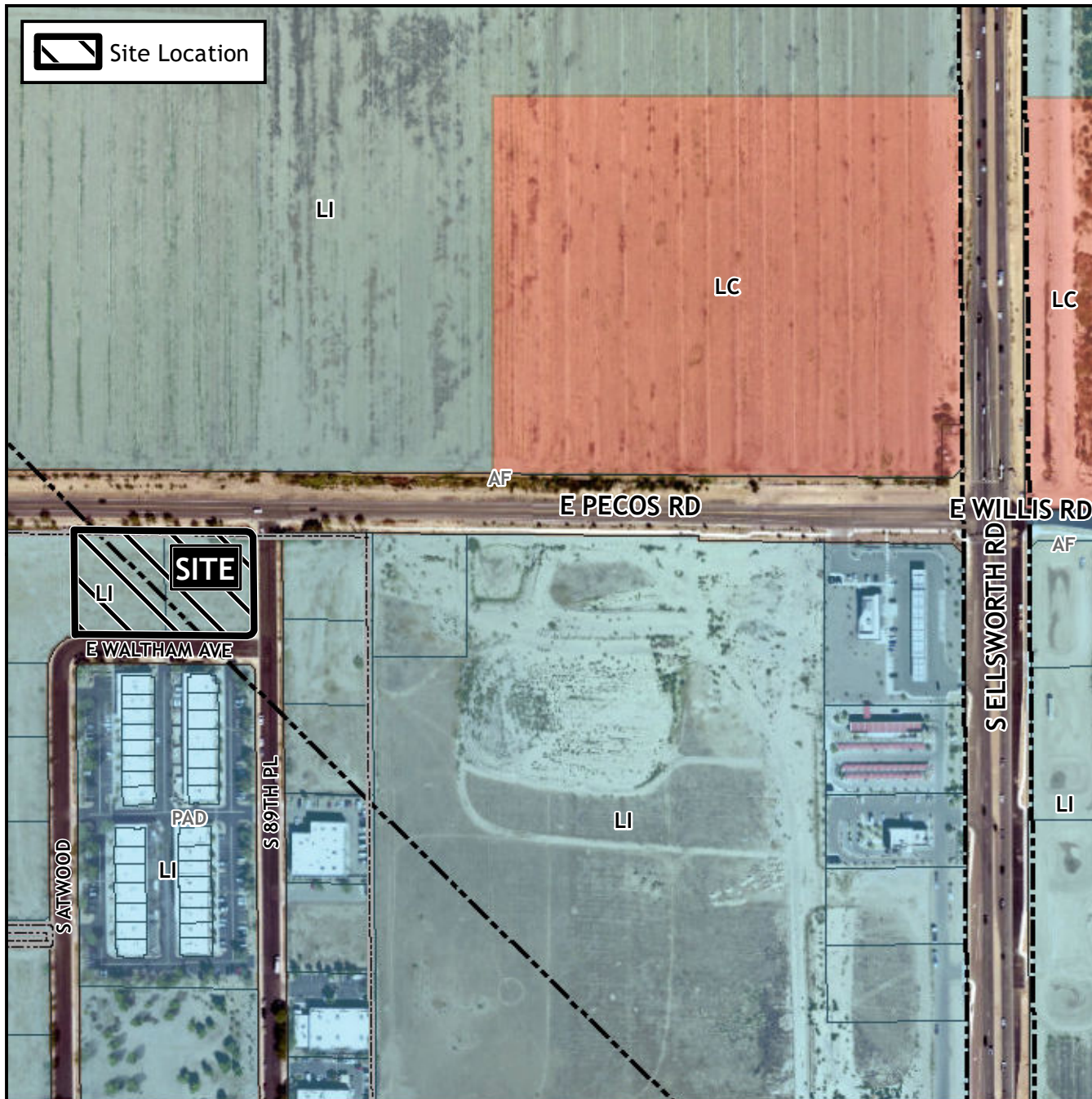


Planning and Zoning Vicinity Map: ZON21-00995



Case Details

CASE:

ZON21-00995

PRE-PLAT : ☐

SITE / ADDRESS:

District 6. Within the 8900 block of East Pecos Road (south side), within the 7200 block of South 89th Place (west side), and within the 8900 block of East Waltham Avenue (north side). Located west of Ellsworth Road on the south side of Pecos Road (2± acres).

REQUEST:

Rezone from Light Industrial with a Planned Area Development Overlay (LI-PAD) to Light Industrial with a Planned Area Development Overlay and Bonus Intensity Zone Overlay (LI-PAD-BIZ), and Site Plan Review. This request will allow for an industrial development.

