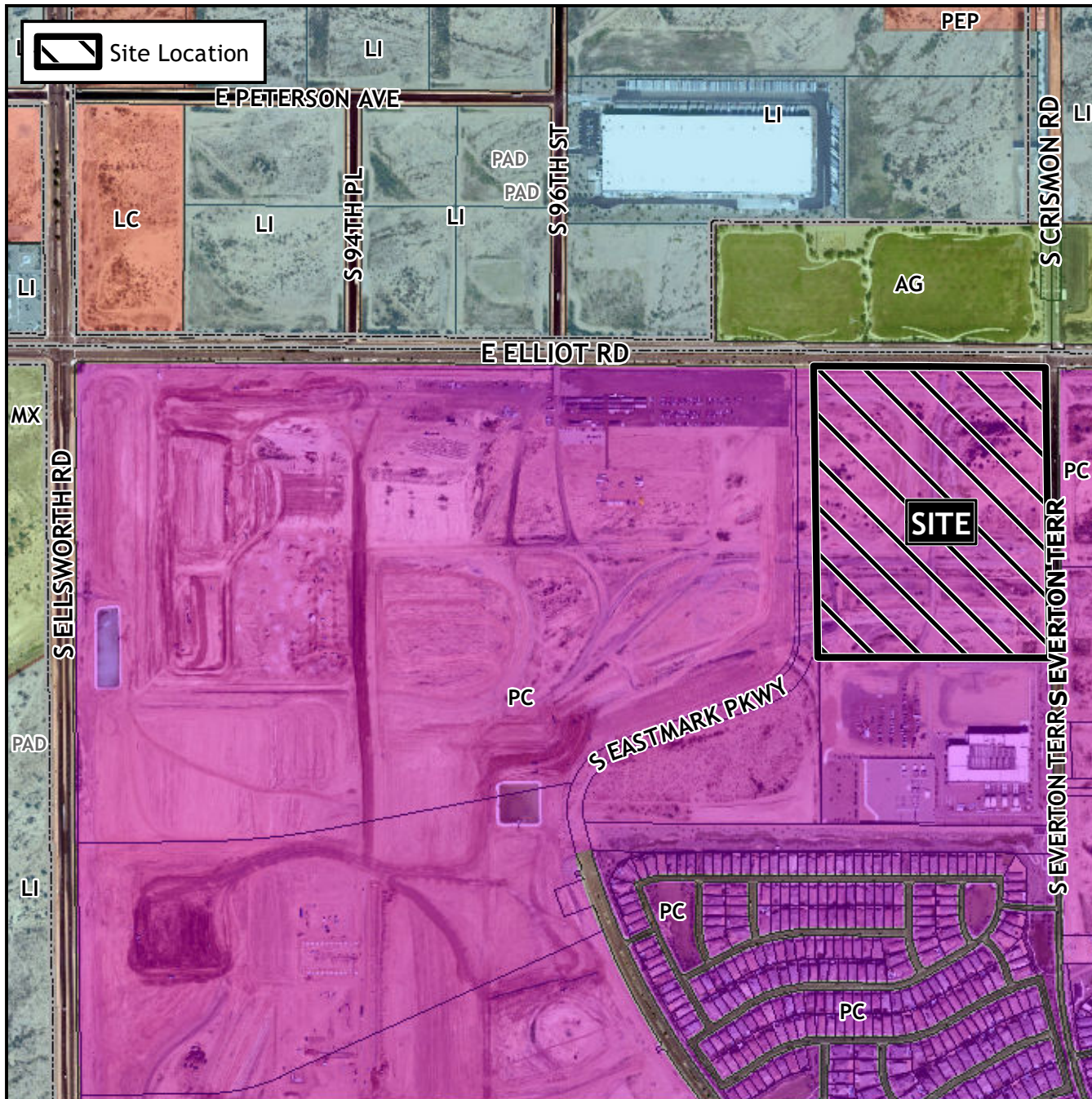


Planning and Zoning Vicinity Map: ZON22-00603



Case Details

CASE:

ZON22-00603

PRE-PLAT : ☐

SITE / ADDRESS:

District 6. Within the 9800 to 10000 blocks of East Elliot Road (south side), within the 3600 to 3900 blocks of South Everton Terrace (west side), and within the 3600 to 3900 blocks of South Eastmark Parkway (east side). Located east of Ellsworth Road on the south side of Elliot Road. (44± acres).

REQUEST:

Site Plan Review. This request will allow for an industrial development.

