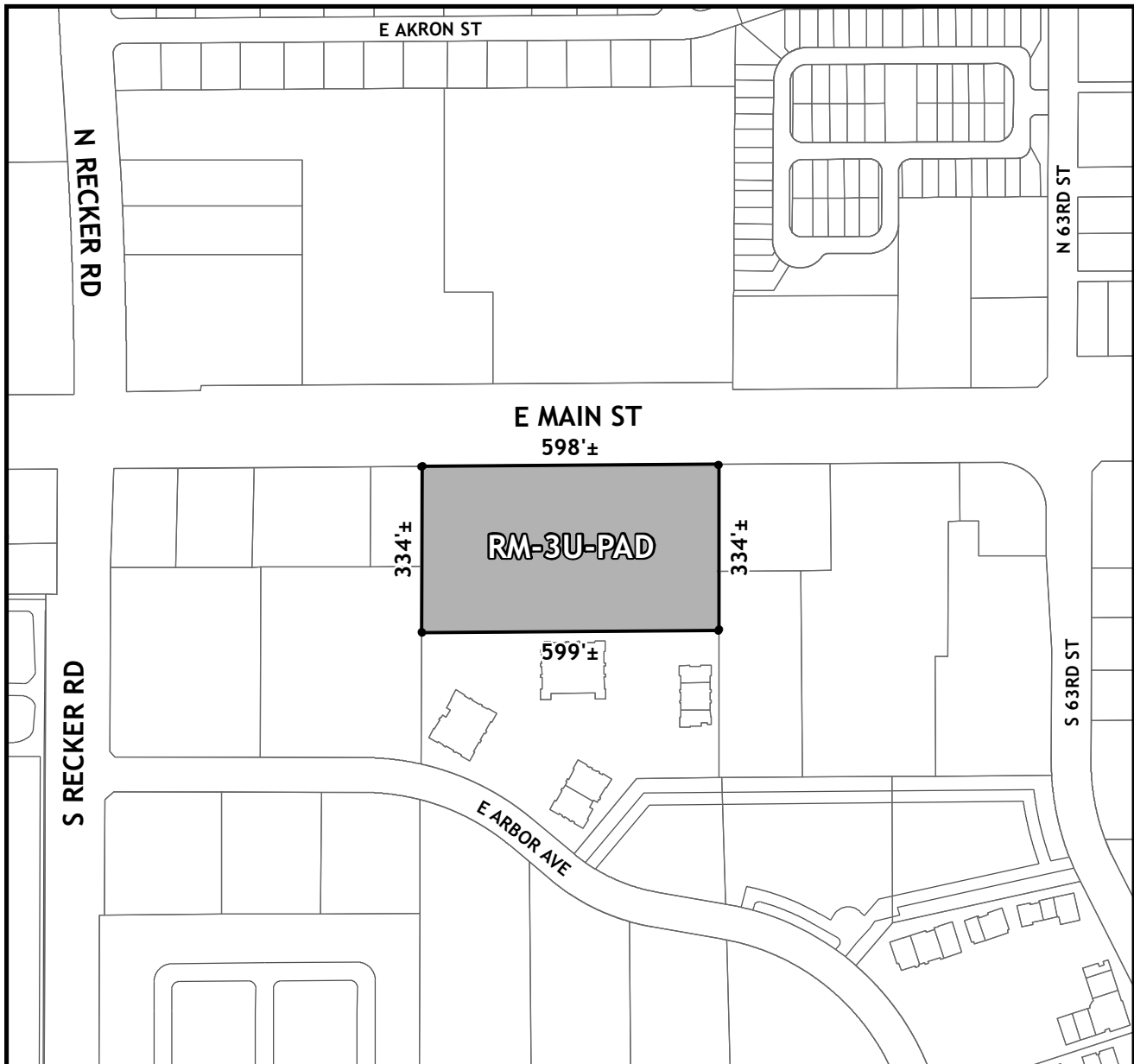




OFFICIAL SUPPLEMENTARY ZONING MAP AMENDING THE CITY OF MESA ZONING MAP



CASE: ZON21-00966

ACREAGE: 4.5±

REQUEST: Rezone from Limited Commercial (LC) to Multiple Residence 3 with a 'U' designation and a Planned Area Development overlay (RM-3U-PAD) and Site Plan Review.

ORDINANCE: _____

Please be advised that the attached zoning changes were approved by the Mesa City Council on _____, 2022 by Ordinance # _____. If you have any questions concerning these changes, contact the City of Mesa Planning Division at 480-644-2385.

ATTEST: _____ DATE: _____

MAYOR

CITY CLERK