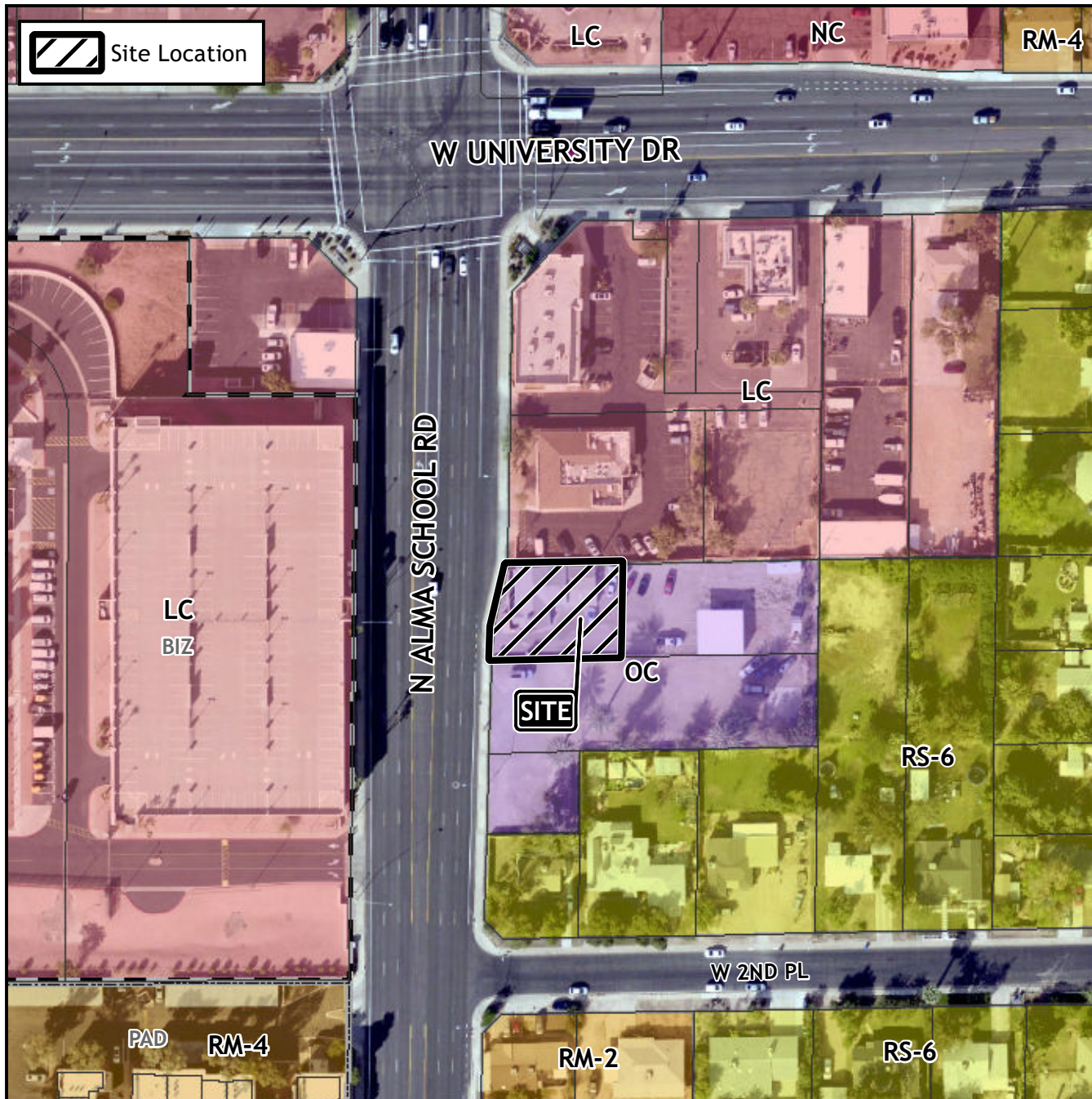


Board of Adjustment Vicinity Map: BOA22-00764



Case Details

Case:

BOA22-00764

Site / Address:

District 4. 325 North Alma School Road.
Located east of Alma School Road and
south of University Drive.

Request:

Requesting a Substantial Conformance
Improvement Permit (SCIP) to allow for
the enlargement of a legal
nonconforming commercial structure
within the Office Commercial (OC)
Zoning District.

