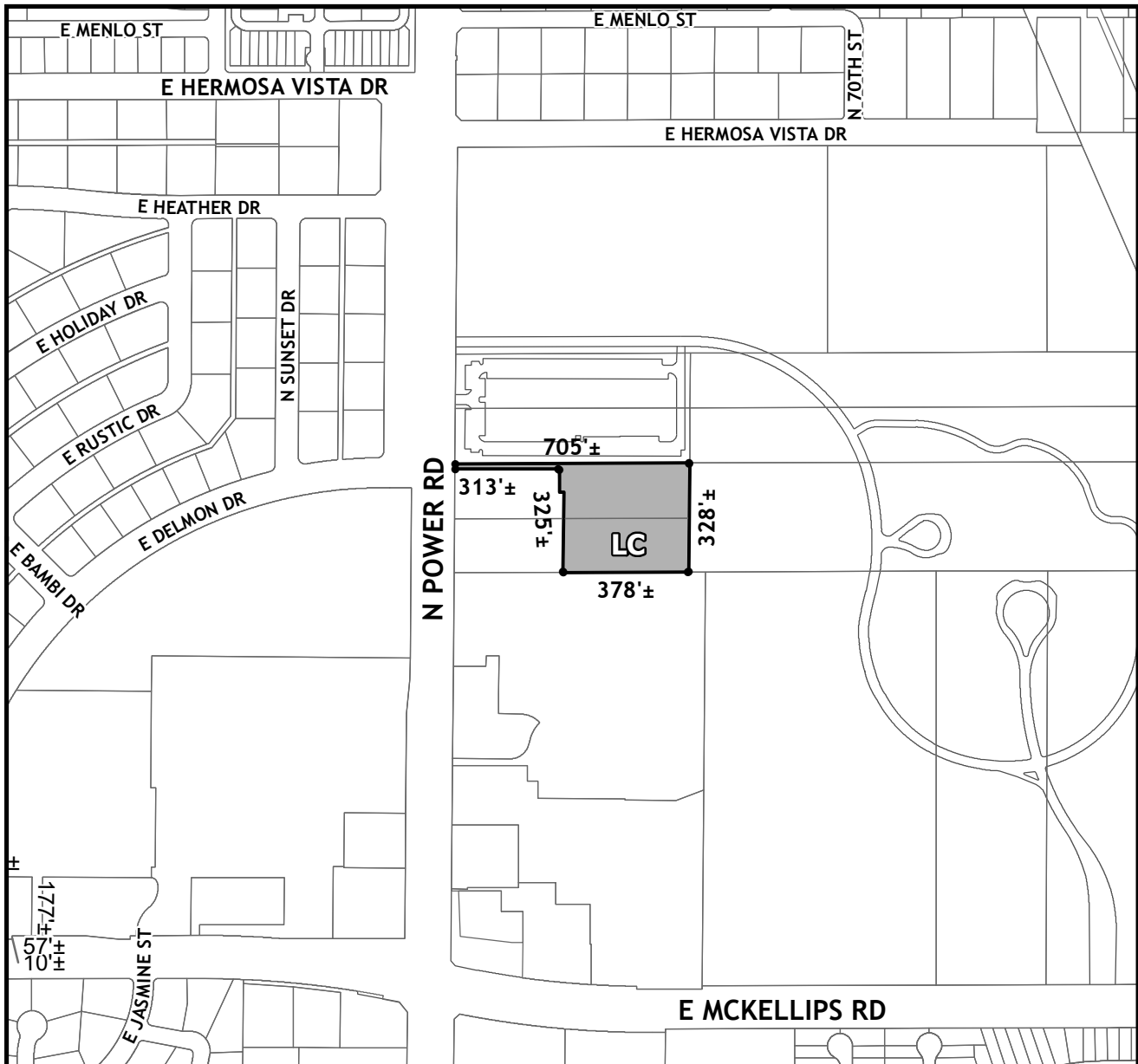




OFFICIAL SUPPLEMENTARY ZONING MAP AMENDING THE CITY OF MESA ZONING MAP



CASE: ZON22-00388

ACREAGE: 2.6±

REQUEST: Rezone from Residential 35 (RS-35) to Limited Commercial (LC).

ORDINANCE: _____

Please be advised that the attached zoning changes were approved by the Mesa City Council on _____, 2022 by Ordinance # _____. If you have any questions concerning these changes, contact the City of Mesa Planning Division at 480-644-2385.

ATTEST: _____ DATE: _____

MAYOR

CITY CLERK