



# DESIGN REVIEW BOARD

August 9, 2022



**DRB22-00579**



## Request

---

- Design Review

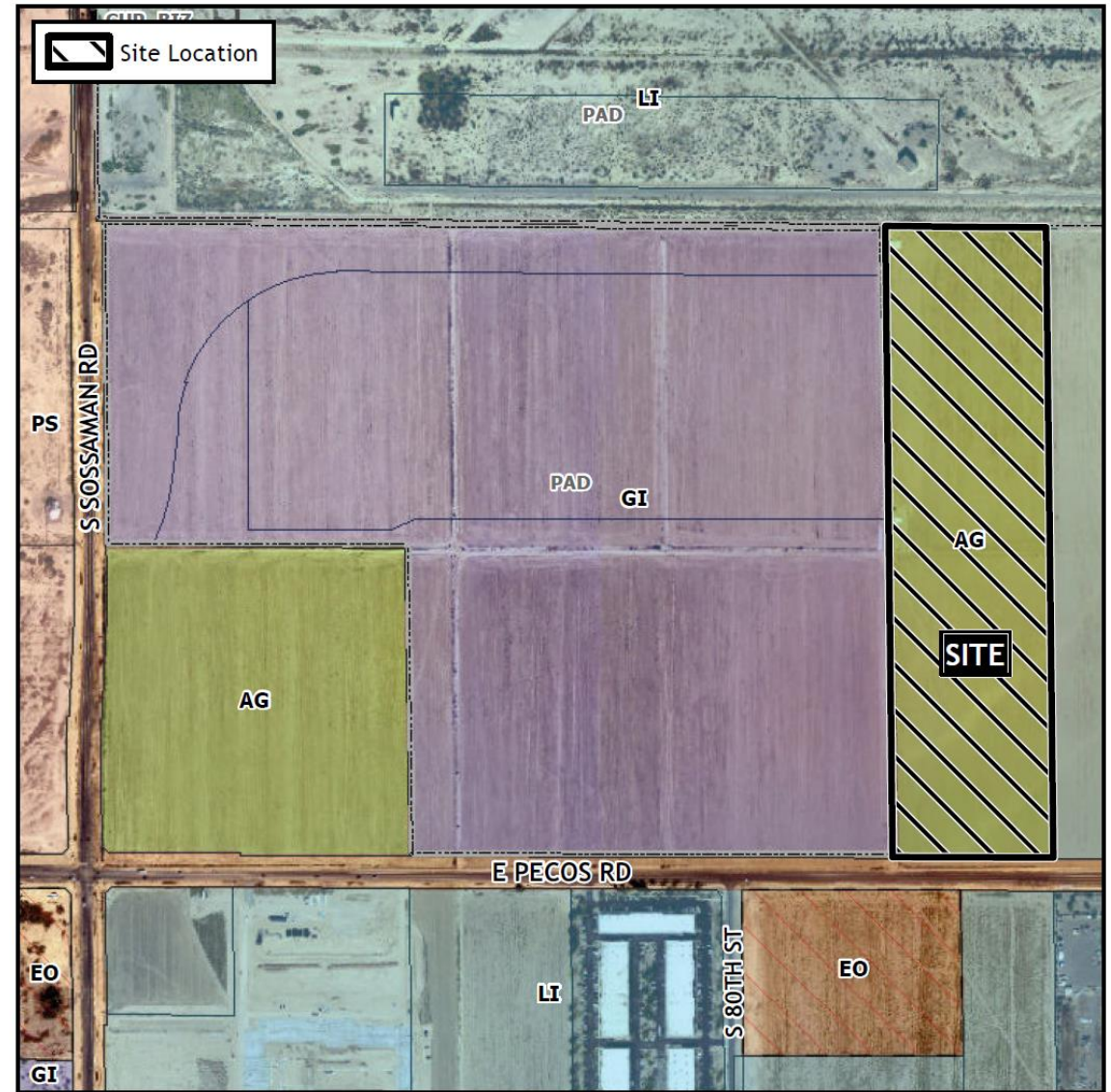
## Purpose

---

- To allow for an industrial development

# Location

- North of Pecos Road
- East of Sossaman Road





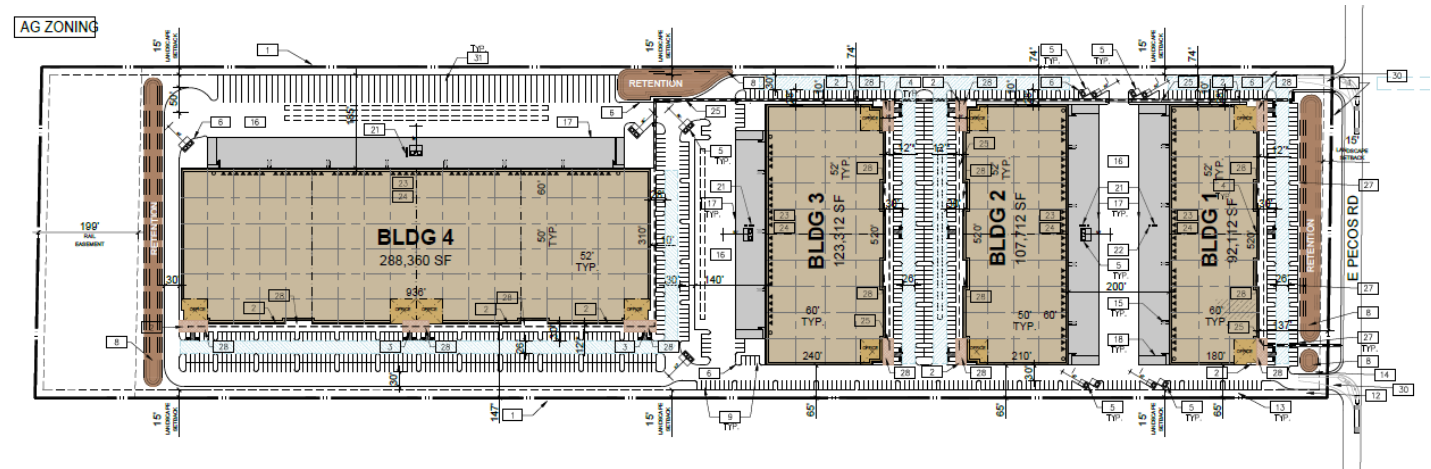
# Site Photo



Looking north towards the site from Pecos Road







# Site Plan

- Four industrial buildings
- Range from 92,112 to 288,360 square feet. 611,496 total square footage.





# Landscape Plan



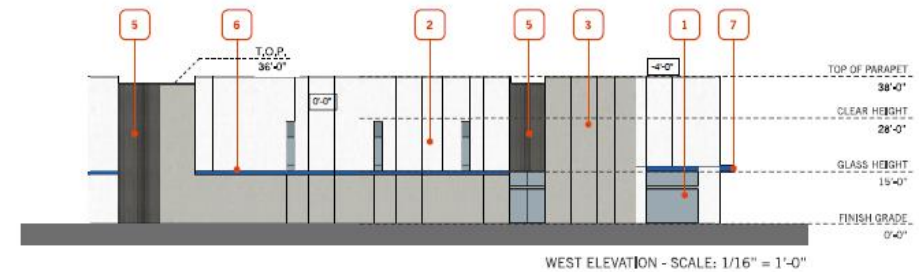
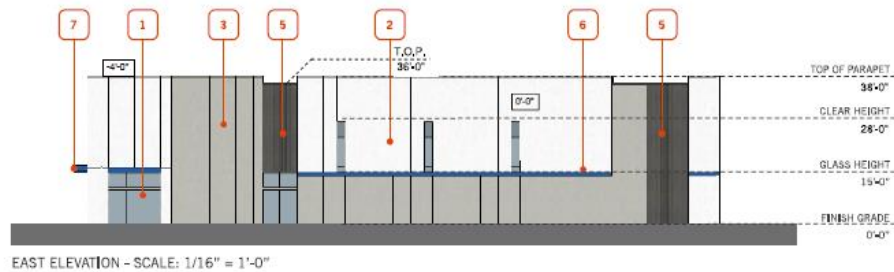
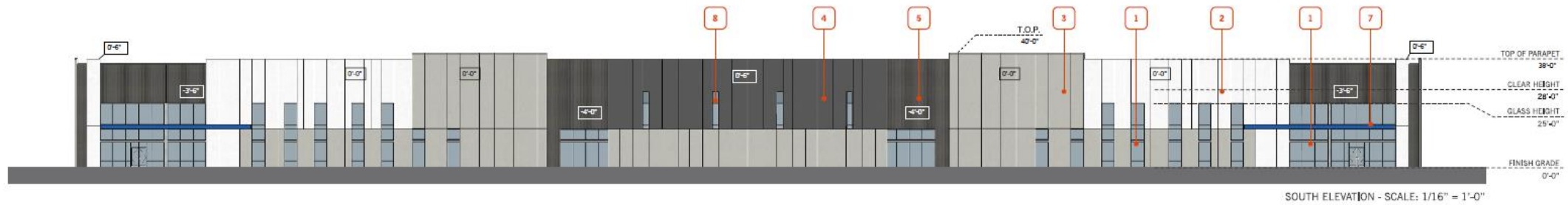
SYMBOL	BOTANICAL NAME	SIZE	QTY	COMMENTS
TREES:	COMMON NAME			
	<i>Cercidium</i> x 'Desert Museum'	15 gal	45	MULTI-TRUNK
	Desert Museum Palo Verde	24" box	45	
	<i>Chitalpa tashkentensis</i>	15 gal	17	STANDARD
	Chitalpa	24" box	18	
	<i>Pistachia chinensis</i> 'Red Push'	15 gal	7	MULTI-TRUNK
	Red Push Pistache	24" box	14	
		36" box	7	
	<i>Prosopis glandulosa</i>	15 gal	27	STANDARD
	Texas Honey Mesquite	24" box	27	
	<i>Quercus virginiana</i>	24" box	103	STANDARD
	Southern Live Oak	36" box	13	
	<i>Ulmus parvifolia</i>	15 gal	31	STANDARD
	Evergreen Elm	24" box	31	

## ACCENT TREES:

	<i>Caesalpinia mexicana</i>	24" box	36	STANDARD
	Mexican Bird of Paradise	36" box	4	
	<i>Sophora secundiflora</i>	24" box	32	STANDARD
	Texas Mountain Laurel	36" box	4	



# Elevations



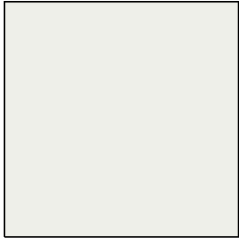
Building 1



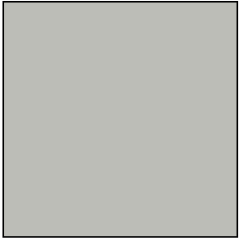
# Renderings



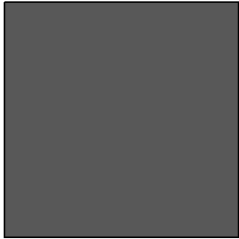
# Color and Materials



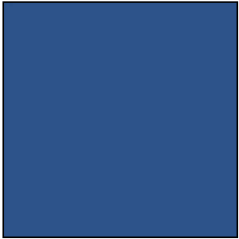
SHERWIN WILLIAMS  
SW 7006  
EXTRA WHITE



SHERWIN WILLIAMS  
SW 7064  
ARGOS



SHERWIN WILLIAMS  
SW 7674  
PEPPERCORN



SHERWIN WILLIAMS  
SW 6967  
FRANK BLUE

MATERIALS BOARD

PECOS GATEWAY INDUSTRIAL  
MESA, ARIZONA - PHX21-0142-00

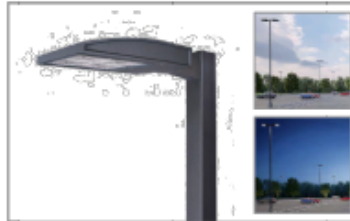
WARE MALCOMB

PHX21-0149-00  
05.17.2022

SHEET  
MB01

# Lighting

Project	Catalog #	Type	\$1, S2, S3, S4, S5
Prepared by	Notes	Date	



## McGraw-Edison GALN Galleon II

Area / Site Luminaire

Product Features



### Interactive Menu

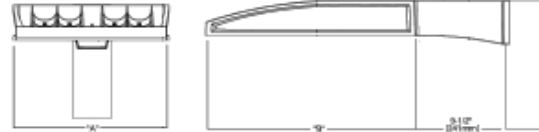
- Ordering Information page 2
- Mounting Details page 3
- Optical Distributions page 5
- Product Specifications page 5
- Energy and Performance Data page 5
- Control Options page 10

### Quick Facts

- Lumen packages range from 3,300 - 73,500 (33W - 552W)
- 16 optical distributions
- Efficacy up to 159 lumens per watt

### Dimensional Details

#### Standard Arm



Number of Light Sockets	Width "A"	Mounting Length "B"	Height with Standard or QM Arm	QMA with Standard or QM Arm
1-4	18"	22"	29 lb	0.95
5-6	22"	22"	39 lb	0.95
7-9	22"	28-1/8"	48 lb	1.1

NOTES:  
1. For arm selection requirements and additional line sizes, see Mounting Details section.

NOTES:  
1. For arm selection requirements and additional line sizes, see Mounting Details section.  
2. See Catalog 20000-001 and website only. Distribution pending.

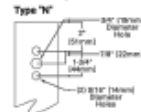
### Product Certifications



### Connected Systems

- WaveLink Lite
- WaveLink

#### Pole Drilling Patterns

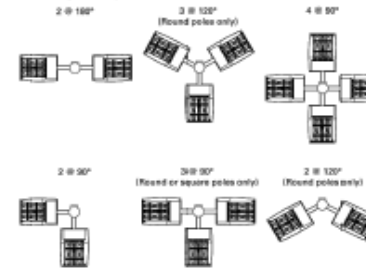


## McGraw-Edison

## GALN Galleon II

### Mounting Details

#### Pole Configuration Options



#### Quick Mount Arm (QMA) \*



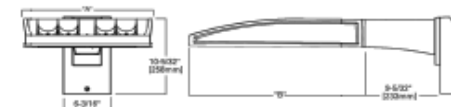
#### Upsew Arm (UP) \*



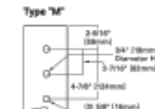
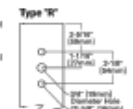
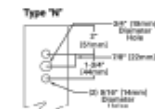
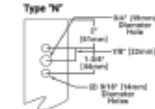
#### Fixed Arm, Fixed (MA)



#### Wall Mount, Fixed (WM)



#### Pole Drilling Patterns



# Alternative Compliance

11-7-3

Parapet detailing

No more than 50% of façade may be covered in one material



# Summary

## Findings

- ✓ Staff is seeking your review and recommendation on the following:
  - Alternative Compliance for materials and modulation
  - Staff welcomes any feedback



# DESIGN REVIEW BOARD

August 9, 2022