



DESIGN REVIEW BOARD

August 9, 2022



DRB22-00534



Request

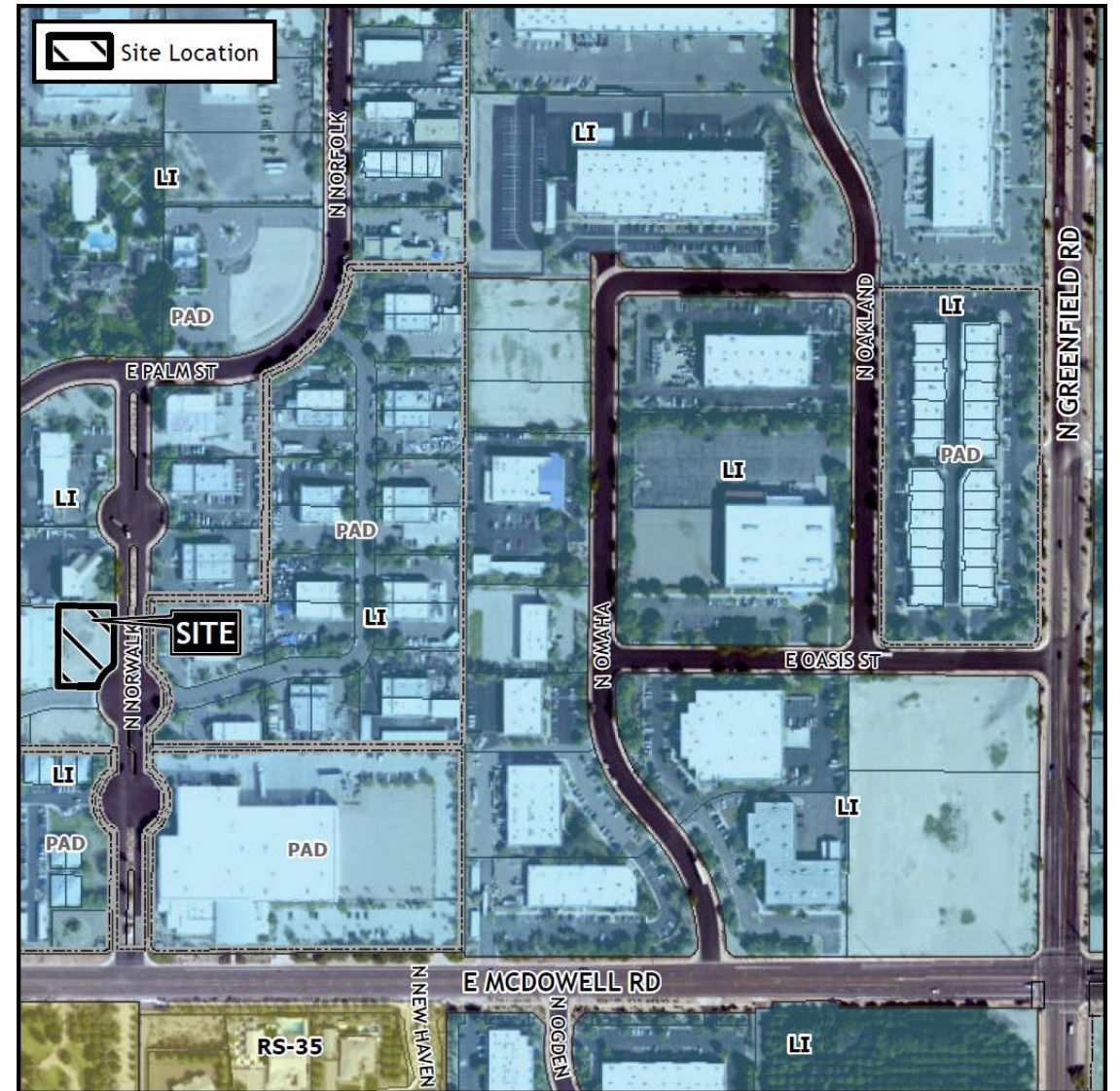
- Design Review

Purpose

- To allow for the development of an industrial building

Location

- North of McDowell Road
- West of Greenfield Road

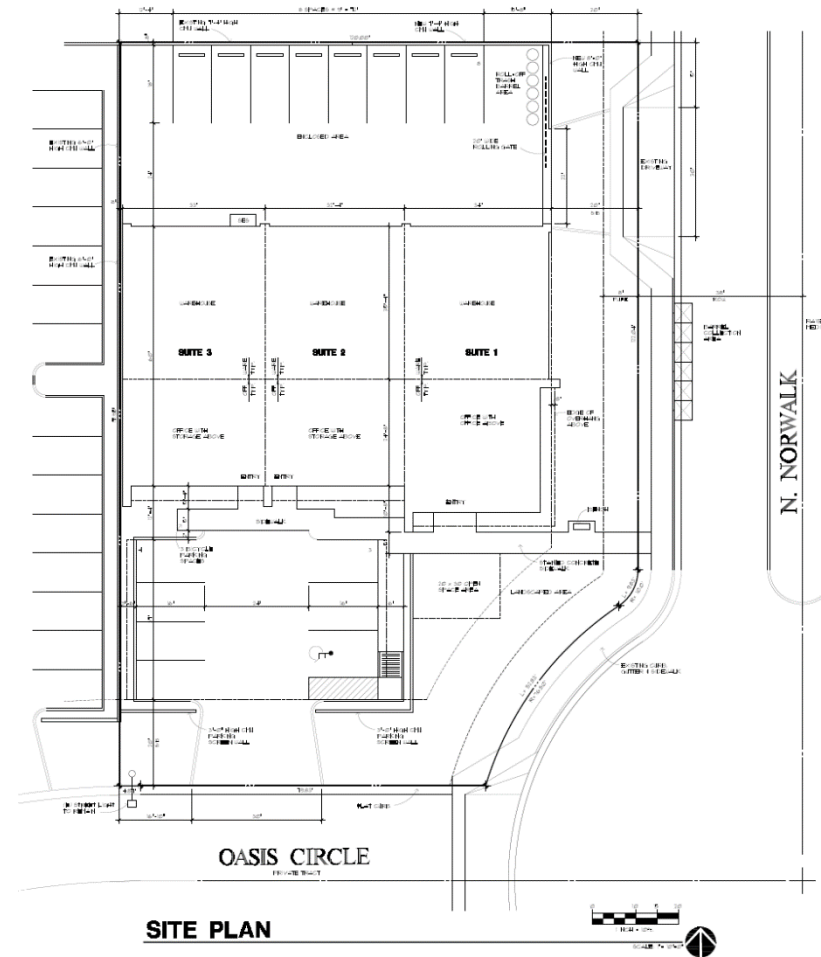


Site Photo

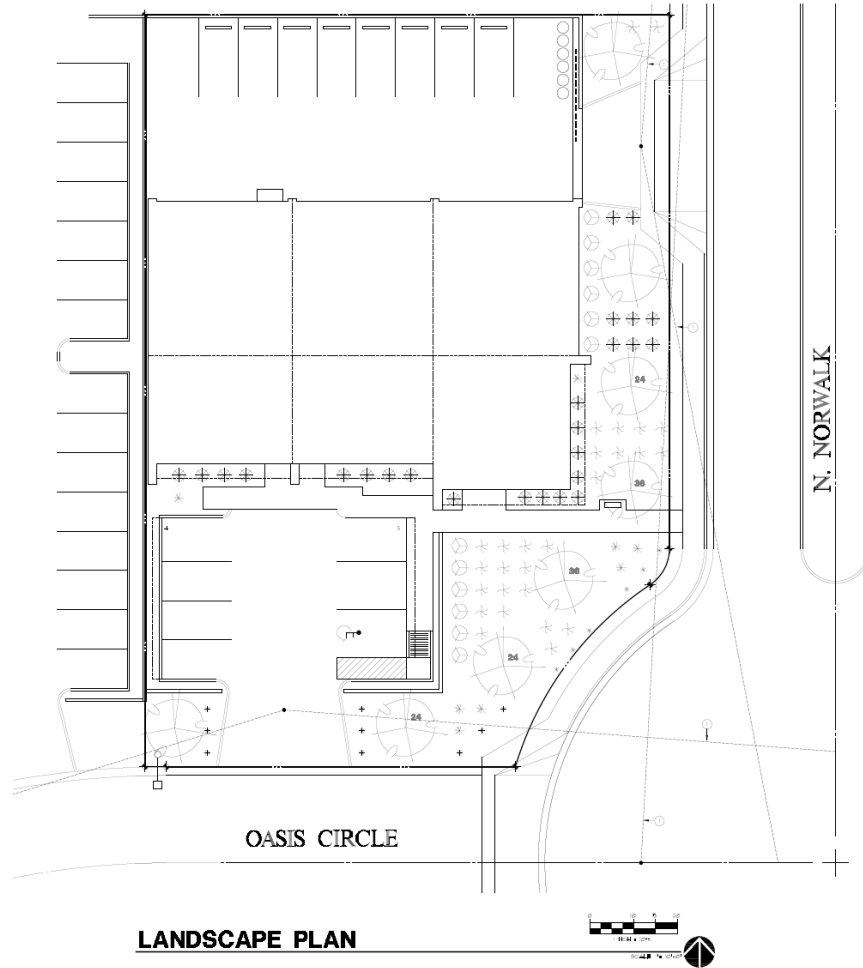


Looking northwest towards the site from Norwalk

Site Plan



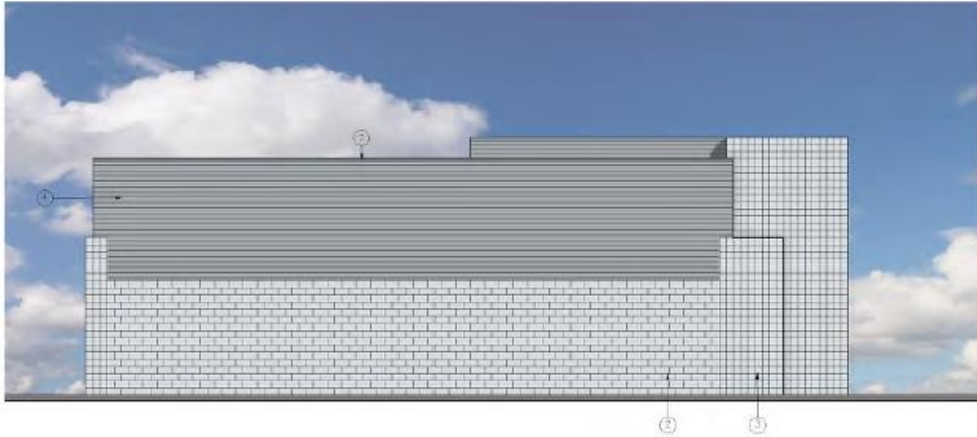
Landscape Plan



PLANT LEGEND

| SYMBOL | COMMON NAME: | BOTANICAL NAME | SIZE | QNT | AREA | | |
|-----------------------------------|-------------------------|---|------------------------------|-------------|-------------------|-------------------|--|
| TREES | | | | | | | |
| | PALO BREA | Perkinsia praecox | 36' BOX 24' BOX 15 GAL | 2 3 3 | 100 100 100 | 200 300 300 | |
| SHRUBS / GROUND COVER AND ACCENTS | | | | | | | |
| | OCOTILLO | Fouquieria spendens | 5 GAL. | 8 | 25 | 200 | |
| | RED YUCCA | Hesperaloe parvifolia | 5 GAL. | 27 | 25 | 675 | |
| | SMOOTH AGAVE | Agave desmettiana | 5 GAL. | 25 | 10 | 250 | |
| | GOLDEN BARREL CACTUS | Echinocactus grusonii | 1 GAL. | 15 | 5 | 75 | |
| | SILVER CLOUD SAGE | Leucophyllum candidum | 5 GAL. | 12 | 25 | 300 | |
| TOTAL AREA | | | | | 2300 SF | | |
| 'ALL' PLANTING BEDS | | INORGANIC GROUND COVER TO BE: MIN. 2" DECOMPOSED GRANITE 3/4" SCREENED. COLOR TO BE: 'SADDLEBACK BROWN' | | | | | |

Building Elevations



WEST ELEVATION

SCALE: 3/16" = 1'-0"



SOUTH ELEVATION

SCALE: 3/16" = 1'-0"

FACADE MATERIAL CALCULATIONS

| SYMBOL | MATERIAL | WEST ELEVATION | | SOUTH ELEVATION | | NORTH ELEVATION | | EAST ELEVATION | |
|--------|-------------------------|----------------|---------|-----------------|---------|-----------------|---------|----------------|---------|
| | | AREA | PERCENT | AREA | PERCENT | AREA | PERCENT | AREA | PERCENT |
| ② | REGULAR CMU | 612 SF | 44 | 536 SF | 25 | 524 SF | 25 | 502 SF | 33 |
| ③ | SCORED CMU | 117 SF | 08 | 107 SF | 05 | 117 SF | 06 | 77 SF | 05 |
| ④ | HORIZONTAL METAL SIDING | 669 SF | 48 | 675 SF | 31 | 857 SF | 41 | 565 SF | 37 |
| ⑤ | VERTICAL METAL PANELS | | | 292 SF | 13 | | | 107 SF | 07 |
| ⑥/⑨ | STOREFRONT/DOORS | | | 570 SF | 26 | 570 SF | 28 | 266 SF | 18 |
| | | 1398 SF | 100 | 2180 SF | 100 | 2068 SF | 100 | 1517 SF | 100 |

MATERIAL/COLOR SCHEDULE:

| | |
|-------------------------------|---|
| ① METAL ROOF | AEP SPAN STANDING SEAM METAL ROOF PANELS COLOR: ZINCALUME PLUS |
| ② 8X8X16 REGULAR CMU | SUPERLITE BLOCK COLOR: GRAY |
| ③ 8X8X16 SCORED BLOCK CMU | SUPERLITE BLOCK COLOR: GRAY |
| ④ HORIZONTAL METAL SIDING | AEP SPAN NL-WAVE CORRUGATED METAL SIDING COLOR: ZINCALUME PLUS |
| ⑤ VERTICAL METAL PANELS | AEP SPAN FLAT SHEET WALL PANEL COLOR: DARK BRONZE |
| ⑥ ALUMINUM WINDOWS/STOREFRONT | COLOR: BRONZE ANNOXIDIZED |
| ⑦ METAL CAP FLASHING | COLOR: ZINCALUME PLUS |
| ⑧ GUTTER/DOWNSPOUT | COLOR: ZINCALUME PLUS |
| ⑨ MANDOR/OVERHEAD DOOR | SHERWIN WILLIAMS SW 6868 - REAL RED |
| ⑩ S.E.S./GATE | SHERWIN WILLIAMS SW 6868 - REAL RED |




Building Elevations



| FACADE MATERIAL CALCULATIONS | | | | | | | | | |
|------------------------------|-------------------------|----------------|---------|-----------------|---------|-----------------|---------|----------------|---------|
| | | WEST ELEVATION | | SOUTH ELEVATION | | NORTH ELEVATION | | EAST ELEVATION | |
| SYMBOL | MATERIAL | AREA | PERCENT | AREA | PERCENT | AREA | PERCENT | AREA | PERCENT |
| ② | REGULAR CMU | 612 SF | 44 | 536 SF | 25 | 524 SF | 25 | 502 SF | 33 |
| ③ | SCORED CMU | 117 SF | 08 | 107 SF | 05 | 117 SF | 06 | 77 SF | 05 |
| ④ | HORIZONTAL METAL SIDING | 669 SF | 48 | 675 SF | 31 | 857 SF | 41 | 565 SF | 37 |
| ⑤ | VERTICAL METAL PANELS | | | 292 SF | 13 | | | 107 SF | 07 |
| ⑥/⑨ | STOREFRONT/DOORS | | | 570 SF | 26 | 570 SF | 28 | 266 SF | 18 |
| | | | | | | | | | |
| | | 1398 SF | 100 | 2180 SF | 100 | 2068 SF | 100 | 1517 SF | 100 |

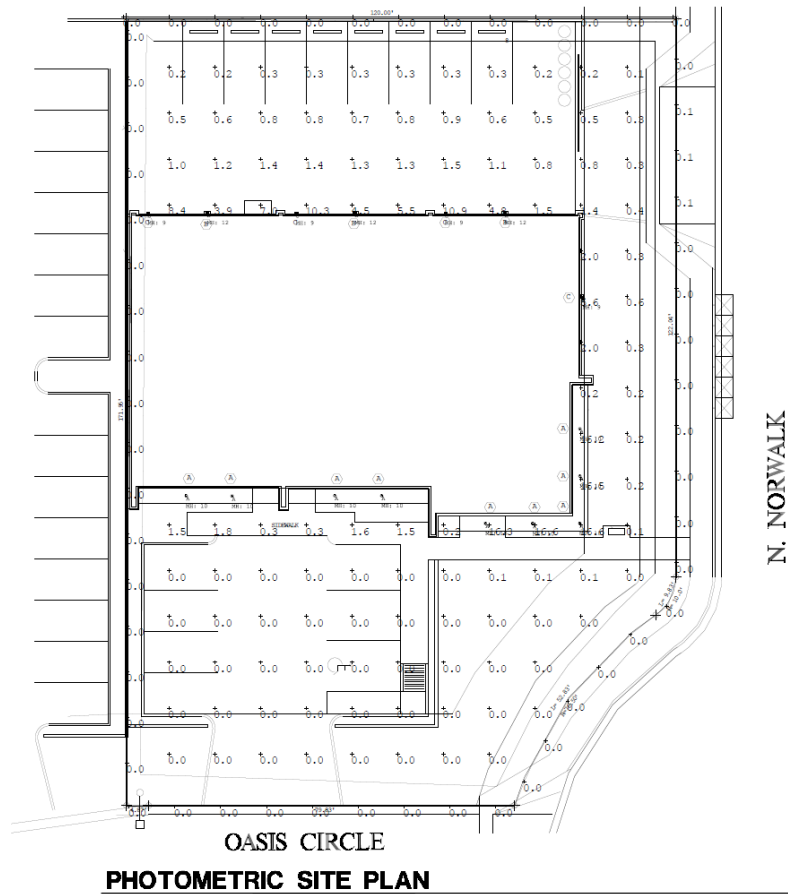
| MATERIAL/COLOR SCHEDULE: | |
|-------------------------------|---|
| ① METAL ROOF | AEP SPAN STANDING SEAM METAL ROOF PANELS COLOR: ZINCALUME PLUS |
| ② 8X8X16 REGULAR CMU | SUPERLITE BLOCK COLOR: GRAY |
| ③ 8X8X16 SCORED BLOCK CMU | SUPERLITE BLOCK COLOR: GRAY |
| ④ HORIZONTAL METAL SIDING | AEP SPAN NL-WAVE CORRUGATED METAL SIDING COLOR: ZINCALUME PLUS |
| ⑤ VERTICAL METAL PANELS | AEP SPAN FLAT SHEET WALL PANEL COLOR: DARK BRONZE |
| ⑥ ALUMINUM WINDOWS/STOREFRONT | COLOR: BRONZE ANNOXIDIZED |
| ⑦ METAL CAP FLASHING | COLOR: ZINCALUME PLUS |
| ⑧ GUTTER/DOWNSPOUT | COLOR: ZINCALUME PLUS |
| ⑨ MANDOR/OVERHEAD DOOR | SHERWIN WILLIAMS SW 6868 - REAL RED |
| ⑩ S.E.S./GATE | SHERWIN WILLIAMS SW 6868 - REAL RED |

Colors and Materials

| <u>ITEM</u> | <u>COLOR</u> | <u>SAMPLE</u> |
|-----------------------------|---|--|
| 1 – METAL ROOF & AWNINGS | AEP SPAN STANDING SEAM ZINCALUME PLUS |  |
| 2 – REGULAR CMU | GRAY |  |
| 3 – SCORED CMU | GRAY |  |

| | | |
|--------------------------------|--|--|
| 4 – HORIZONTAL METAL SIDING | AEP SPAN NU-WAVE CORRUGATED ZINCALUME PLUS |  |
| 5 - VERTICAL METAL PANELS | AEP SPAN FLAT SHEET WALL PANEL DARK BRONZE |  |
| 6 – DOORS/GATE | SHERWIN-WILLIAMS SW 6868 REAL RED |  |

Lighting



prescolite

LFR-6RDS

LITERATURE #1900 SHALLOON DOWNSHIFT

DATE _____ LOCATION _____
TYPE _____ PROJECT _____
CATALOG # _____

LITE CRANK
2.0

RELATED PRODUCTS

- LFR 600
- LFR 600A
- LFR 600B
- LFR 600C
- LFR 600D
- LFR 600E
- LFR 600F
- LFR 600G
- LFR 600H
- LFR 600I
- LFR 600J
- LFR 600K
- LFR 600L
- LFR 600M
- LFR 600N
- LFR 600O
- LFR 600P
- LFR 600Q
- LFR 600R
- LFR 600S
- LFR 600T
- LFR 600U
- LFR 600V
- LFR 600W
- LFR 600X
- LFR 600Y
- LFR 600Z
- LFR 600AA
- LFR 600AB
- LFR 600AC
- LFR 600AD
- LFR 600AE
- LFR 600AF
- LFR 600AG
- LFR 600AH
- LFR 600AI
- LFR 600AJ
- LFR 600AK
- LFR 600AL
- LFR 600AM
- LFR 600AN
- LFR 600AO
- LFR 600AP
- LFR 600AQ
- LFR 600AR
- LFR 600AS
- LFR 600AT
- LFR 600AU
- LFR 600AV
- LFR 600AW
- LFR 600AX
- LFR 600AY
- LFR 600AZ
- LFR 600BA
- LFR 600BB
- LFR 600BC
- LFR 600BD
- LFR 600BE
- LFR 600BF
- LFR 600BG
- LFR 600BH
- LFR 600BI
- LFR 600BJ
- LFR 600BK
- LFR 600BL
- LFR 600BM
- LFR 600BN
- LFR 600BO
- LFR 600BP
- LFR 600BQ
- LFR 600BR
- LFR 600BS
- LFR 600BT
- LFR 600BU
- LFR 600BV
- LFR 600BW
- LFR 600BX
- LFR 600BY
- LFR 600BZ
- LFR 600CA
- LFR 600CB
- LFR 600CC
- LFR 600CD
- LFR 600CE
- LFR 600CF
- LFR 600CG
- LFR 600CH
- LFR 600CI
- LFR 600CJ
- LFR 600CK
- LFR 600CL
- LFR 600CM
- LFR 600CN
- LFR 600CO
- LFR 600CP
- LFR 600CQ
- LFR 600CR
- LFR 600CS
- LFR 600CT
- LFR 600CU
- LFR 600CV
- LFR 600CW
- LFR 600CX
- LFR 600CY
- LFR 600CZ
- LFR 600DA
- LFR 600DB
- LFR 600DC
- LFR 600DD
- LFR 600DE
- LFR 600DF
- LFR 600DG
- LFR 600DH
- LFR 600DI
- LFR 600DJ
- LFR 600DK
- LFR 600DL
- LFR 600DM
- LFR 600DN
- LFR 600DO
- LFR 600DP
- LFR 600DQ
- LFR 600DR
- LFR 600DS
- LFR 600DT
- LFR 600DU
- LFR 600DV
- LFR 600DW
- LFR 600DX
- LFR 600DY
- LFR 600DZ
- LFR 600EA
- LFR 600EB
- LFR 600EC
- LFR 600ED
- LFR 600EE
- LFR 600EF
- LFR 600EG
- LFR 600EH
- LFR 600EI
- LFR 600EJ
- LFR 600EK
- LFR 600EL
- LFR 600EM
- LFR 600EN
- LFR 600EO
- LFR 600EP
- LFR 600EQ
- LFR 600ER
- LFR 600ES
- LFR 600ET
- LFR 600EU
- LFR 600EV
- LFR 600EW
- LFR 600EX
- LFR 600EY
- LFR 600EZ
- LFR 600FA
- LFR 600FB
- LFR 600FC
- LFR 600FD
- LFR 600FE
- LFR 600FF
- LFR 600FG
- LFR 600FH
- LFR 600FI
- LFR 600FJ
- LFR 600FK
- LFR 600FL
- LFR 600FM
- LFR 600FN
- LFR 600FO
- LFR 600FP
- LFR 600FQ
- LFR 600FR
- LFR 600FS
- LFR 600FT
- LFR 600FU
- LFR 600FV
- LFR 600FW
- LFR 600FX
- LFR 600FY
- LFR 600FZ
- LFR 600GA
- LFR 600GB
- LFR 600GC
- LFR 600GD
- LFR 600GE
- LFR 600GF
- LFR 600GG
- LFR 600GH
- LFR 600GI
- LFR 600GJ
- LFR 600GK
- LFR 600GL
- LFR 600GM
- LFR 600GN
- LFR 600GO
- LFR 600GP
- LFR 600GQ
- LFR 600GR
- LFR 600GS
- LFR 600GT
- LFR 600GU
- LFR 600GV
- LFR 600GW
- LFR 600GX
- LFR 600GY
- LFR 600GZ
- LFR 600HA
- LFR 600HB
- LFR 600HC
- LFR 600HD
- LFR 600HE
- LFR 600HF
- LFR 600HG
- LFR 600HH
- LFR 600HI
- LFR 600HJ
- LFR 600HK
- LFR 600HL
- LFR 600HM
- LFR 600HN
- LFR 600HO
- LFR 600HP
- LFR 600HQ
- LFR 600HR
- LFR 600HS
- LFR 600HT
- LFR 600HU
- LFR 600HV
- LFR 600HW
- LFR 600HX
- LFR 600HY
- LFR 600HZ
- LFR 600IA
- LFR 600IB
- LFR 600IC
- LFR 600ID
- LFR 600IE
- LFR 600IF
- LFR 600IG
- LFR 600IH
- LFR 600II
- LFR 600IJ
- LFR 600IK
- LFR 600IL
- LFR 600IM
- LFR 600IN
- LFR 600IO
- LFR 600IP
- LFR 600IQ
- LFR 600IR
- LFR 600IS
- LFR 600IT
- LFR 600IU
- LFR 600IV
- LFR 600IW
- LFR 600IX
- LFR 60

[illegible][illegible]

CAN LIGHT AT SOFFIT AREAS - FIXTURE A

WALL LIGHT - FIXTURE B

SECURITY LIGHT - FIXTURE C

Alternative Compliance

Publicly visible facades (i.e., viewed from rights-of-way or private property), may not have blank, uninterrupted wall lengths exceeding 50-feet without including at least two (2) of the following: change in plane, change in texture or masonry pattern, windows, trellis with vines, or an equivalent element that subdivides the wall into human scale proportions.

Facades shall incorporate 3 different materials

No more than 50% of façade may be covered in one material

Summary

Findings

- ✓ Staff is seeking your review and recommendation on the following:
 - Alternative Compliance for materials, vertical modulation, and parapet detailing
- Staff welcomes any feedback



DESIGN REVIEW BOARD

August 9, 2022