



DESIGN REVIEW BOARD

August 9, 2022



DRB22-00594



Request

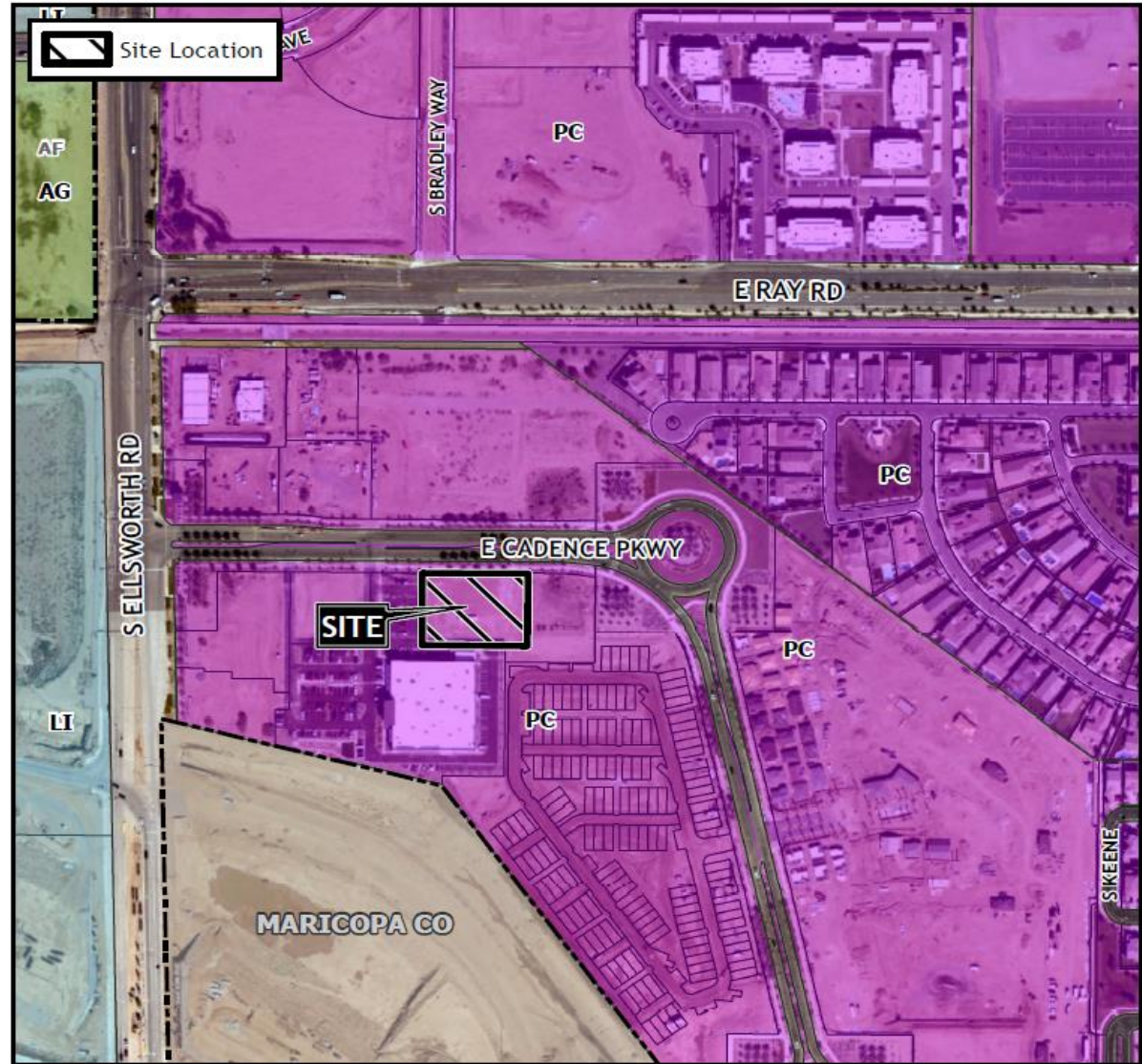
- Design Review

Purpose

- Development of a Children's Clinic

Location

- East of Ellsworth Road
- South of Ray Road



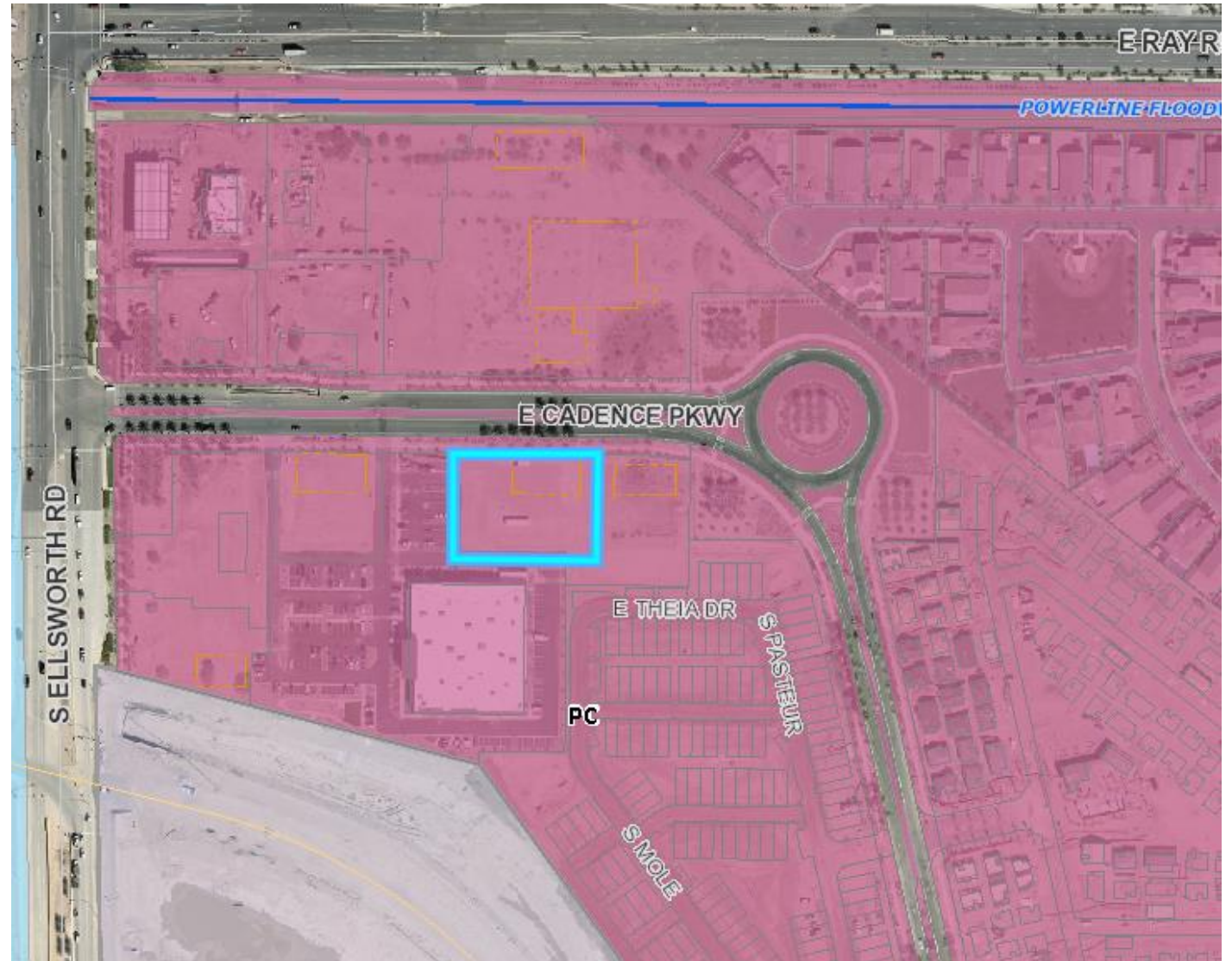
Site Photo



Looking south from Cadence Parkway

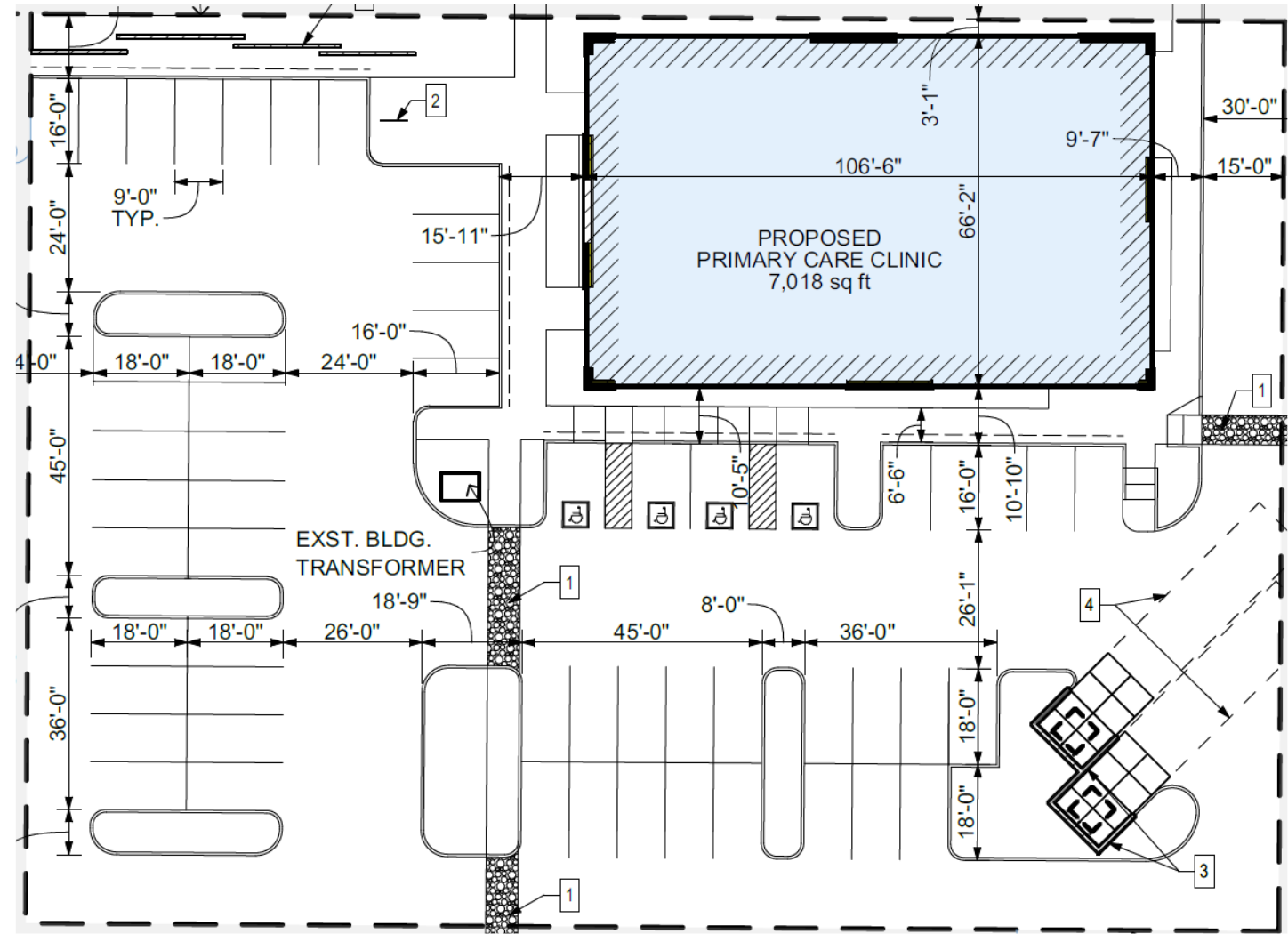
Zoning

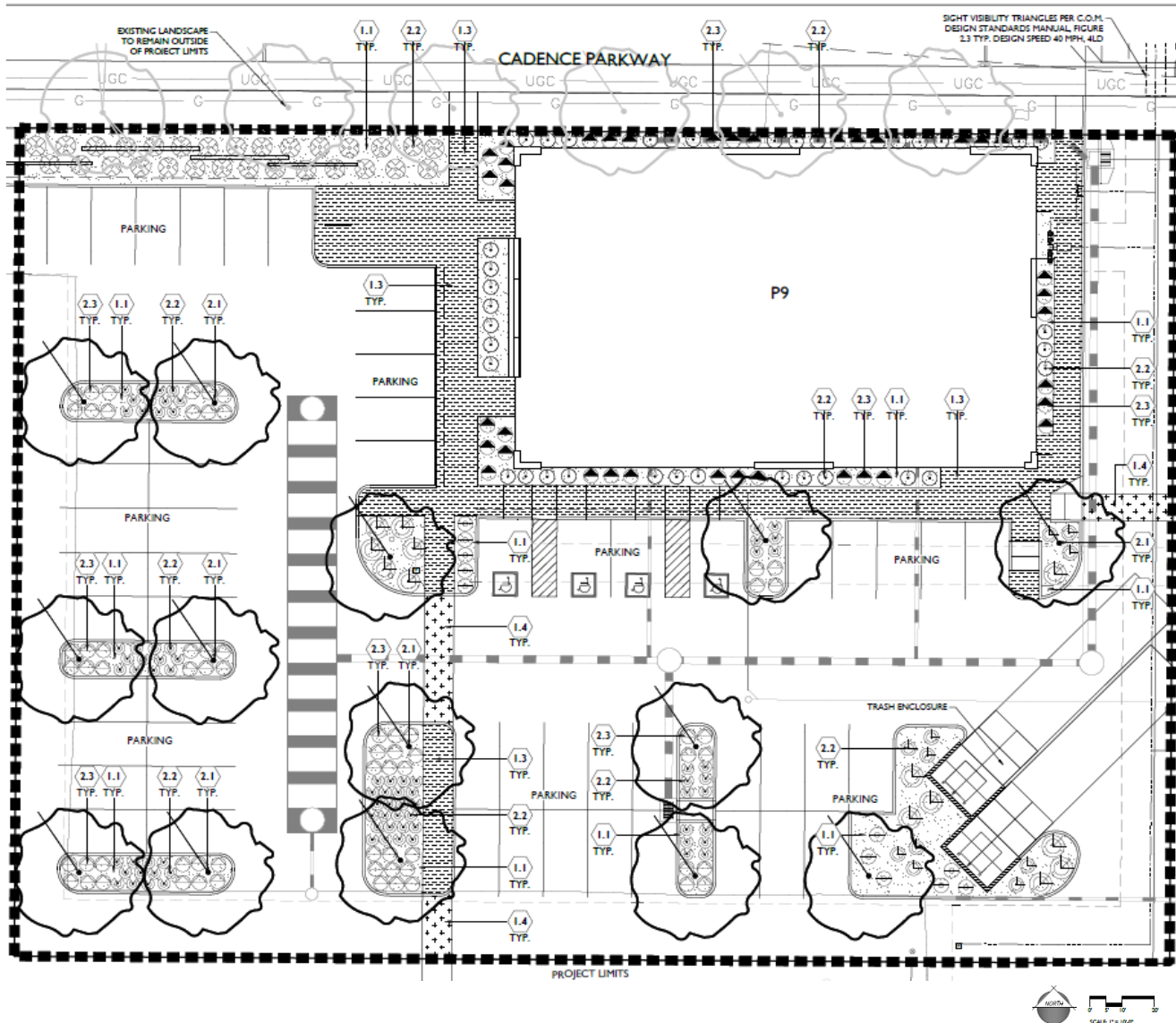
- Planned Community (PC)
- Within Community Commercial (CC) Land Use Group
- Use is consistent with the existing zoning



Site Plan

- 7,018 SF building
- Vehicle access from East Cadence Parkway
- Parking spaces provided on site

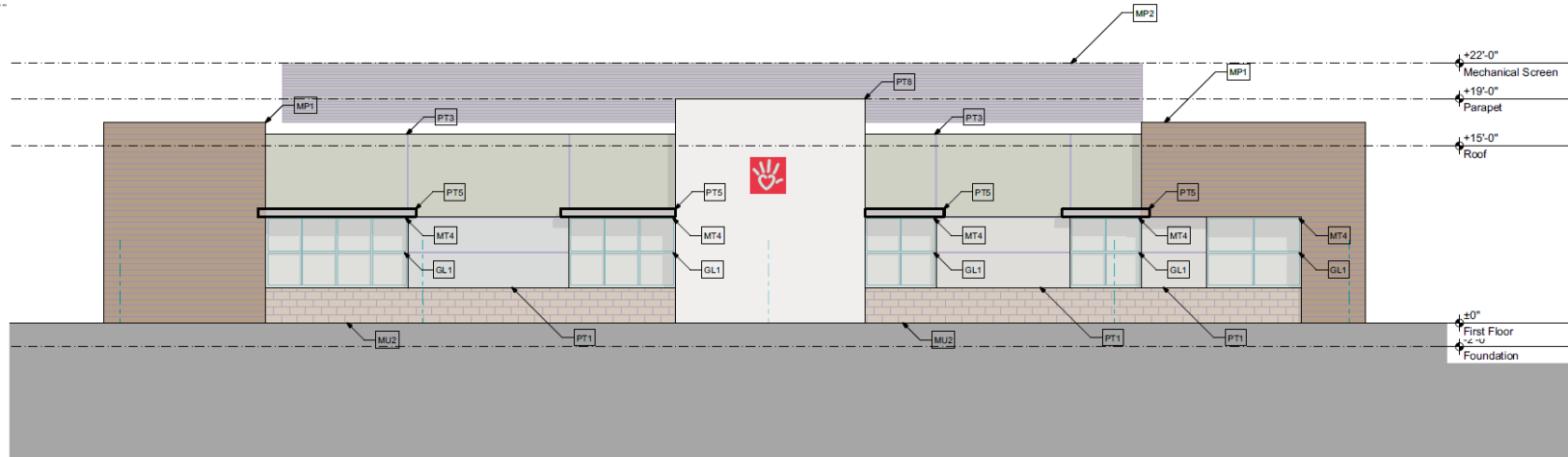




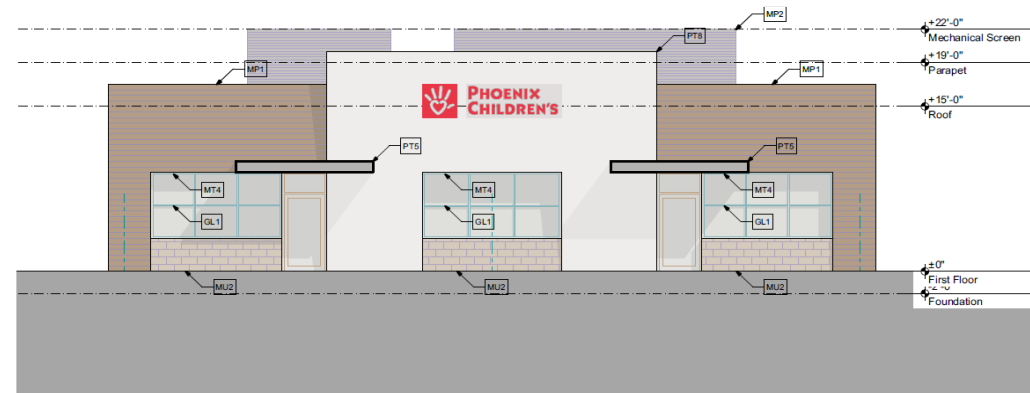
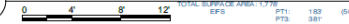
Landscape Plan

- Trees include red push pistache
- Shrubs and accents include octopus agave, bottlebrush, valentine bush, blue bells, gopher plant and rose

Elevations



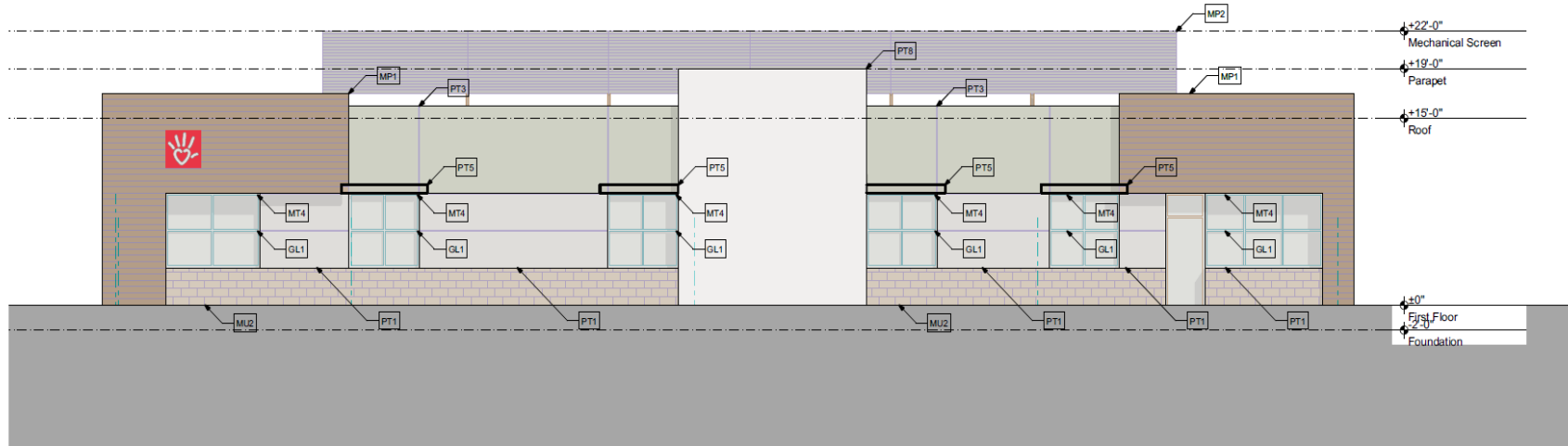
3 N2 NORTH COLOR ELEVATION



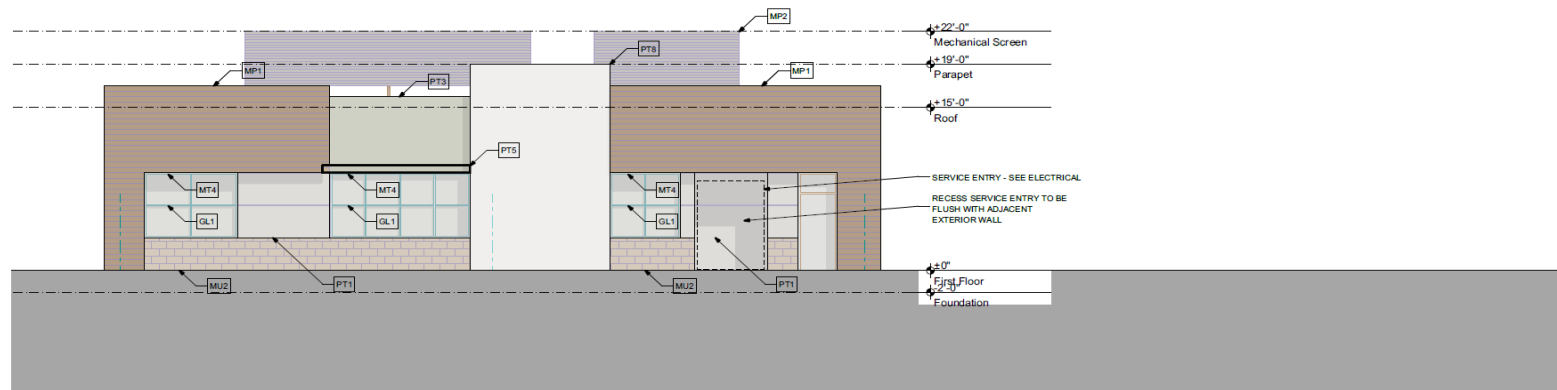
4 W2 WEST COLOR ELEVATION



Elevations



3 S2 SOUTH COLOR ELEVATION



4 E1 EAST COLOR ELEVATION

Renderings



Northeast



Northwest



Southeast

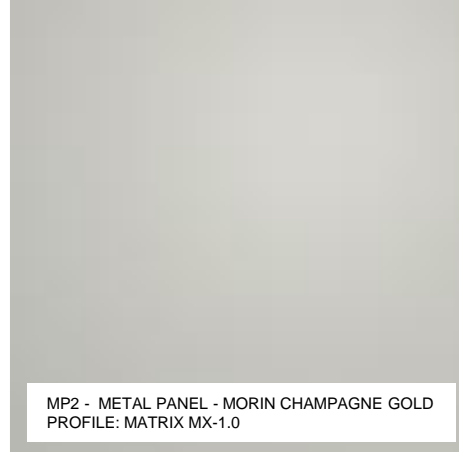


Southwest

Materials Board



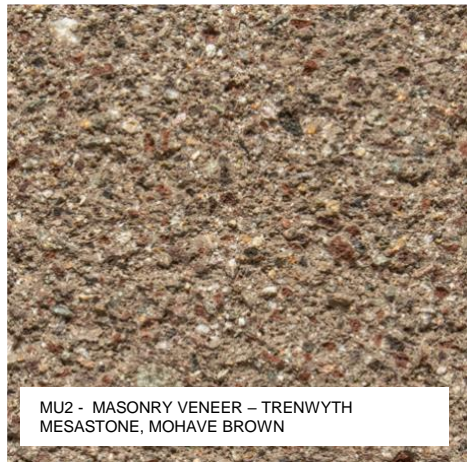
MP2 - METAL PANEL - MORIN CHAMPAGNE GOLD
PROFILE: MATRIX MX-1.0



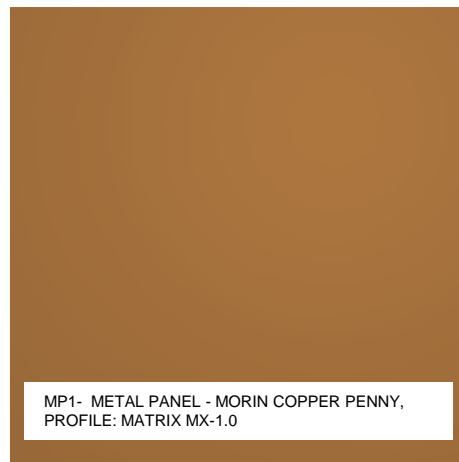
PT3 - EIFS/STUCCO - DE 6250, FAIRBANK GREEN



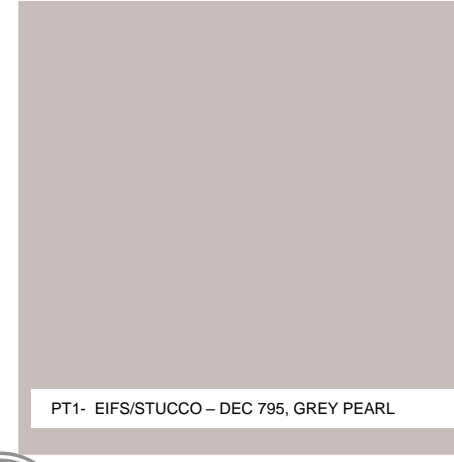
MP2 - INSULATED GLASS (IGU) - VITRO,
SOLARBAN 70



MU2 - MASONRY VENEER - TRENWYTH
MESASTONE, MOHAVE BROWN



MP1- METAL PANEL - MORIN COPPER PENNY,
PROFILE: MATRIX MX-1.0



PT1- EIFS/STUCCO - DEC 795, GREY PEARL



MT4 - ALUMINIUM STOREFRONT - ARCADIA,
DARK BRONZE

Lighting

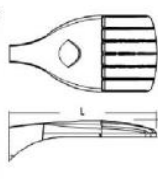


D-Series Size 0 LED Area Luminaire



Specifications

| | |
|---------------|---------------------------------------------|
| EPA: | 0.95 ft ² (0.09 m ²) |
| Length: | 26" (660 mm) |
| Width: | 13" (330 mm) |
| Height: | 5" (127 mm) |
| Height: | 7" (178 mm) |
| Weight (max): | 16 lbs (7.3 kg) |



Introduction

The modern styling of the D-Series is striking yet unobtrusive - making a bold, progressive statement even as it blends seamlessly with its environment. The D-Series distills the benefits of the latest in LED technology into a high performance, high efficacy, long-life luminaire. The outstanding photometric performance results in sites with excellent uniformity, greater pole spacing and lower power density. It is ideal for replacing up to 400W metal halide with typical energy savings of 70% and expected service life of over 100,000 hours.

Ordering Information

| Series | LEDs | Color Temperature | Beam Spread | Beam Angle | Beam Diameter | Beam Length | Beam Area | Beam Volume | Beam Weight |
|--------|------|-------------------|-------------|------------|---------------|-------------|-----------|-------------|-------------|
| DS001 | 100 | 10000K | 120° | 120° | 120° | 120° | 120° | 120° | 120° |
| DS002 | 200 | 10000K | 120° | 120° | 120° | 120° | 120° | 120° | 120° |
| DS003 | 300 | 10000K | 120° | 120° | 120° | 120° | 120° | 120° | 120° |
| DS004 | 400 | 10000K | 120° | 120° | 120° | 120° | 120° | 120° | 120° |
| DS005 | 500 | 10000K | 120° | 120° | 120° | 120° | 120° | 120° | 120° |
| DS006 | 600 | 10000K | 120° | 120° | 120° | 120° | 120° | 120° | 120° |
| DS007 | 700 | 10000K | 120° | 120° | 120° | 120° | 120° | 120° | 120° |
| DS008 | 800 | 10000K | 120° | 120° | 120° | 120° | 120° | 120° | 120° |
| DS009 | 900 | 10000K | 120° | 120° | 120° | 120° | 120° | 120° | 120° |
| DS010 | 1000 | 10000K | 120° | 120° | 120° | 120° | 120° | 120° | 120° |

| Control Options | Other Options | Finish |
|-----------------|---------------|--------|
| DS001 | DS001 | DS001 |
| DS002 | DS002 | DS002 |
| DS003 | DS003 | DS003 |
| DS004 | DS004 | DS004 |
| DS005 | DS005 | DS005 |
| DS006 | DS006 | DS006 |
| DS007 | DS007 | DS007 |
| DS008 | DS008 | DS008 |
| DS009 | DS009 | DS009 |
| DS010 | DS010 | DS010 |

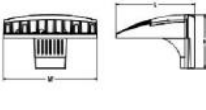


D-Series Pole Mount LED Area Luminaire



Specifications

| | |
|---------|--------------------------------------------|
| EPA: | 0.8 ft ² (0.07 m ²) |
| Length: | 13-24" (330-610 mm) |
| Width: | 11-15" (279-381 mm) |
| Height: | 8" (203 mm) |
| Weight: | 16.03 lbs (7.27 kg) |



Introduction

The D-Series Pole Mount Luminaire is a stylish, fully integrated LED solution for area and site applications. It features a sleek, modern design and is carefully engineered to provide long-lasting, energy-efficient lighting with a variety of optical and control options for customized performance. With an expected service life of over 20 years of nighttime use and up to 74% in energy savings over comparable 250W metal halide luminaires, the D-Series Pole Mount is a reliable, low-maintenance lighting solution that produces sites that are exceptionally illuminated.

Ordering Information

| Series | LEDs | Beam Spread | Beam Angle | Beam Diameter | Beam Length | Beam Area | Beam Volume |
|--------|------|-------------|------------|---------------|-------------|-----------|-------------|
| DS001 | 100 | 10000K | 120° | 120° | 120° | 120° | 120° |
| DS002 | 200 | 10000K | 120° | 120° | 120° | 120° | 120° |
| DS003 | 300 | 10000K | 120° | 120° | 120° | 120° | 120° |
| DS004 | 400 | 10000K | 120° | 120° | 120° | 120° | 120° |
| DS005 | 500 | 10000K | 120° | 120° | 120° | 120° | 120° |
| DS006 | 600 | 10000K | 120° | 120° | 120° | 120° | 120° |
| DS007 | 700 | 10000K | 120° | 120° | 120° | 120° | 120° |
| DS008 | 800 | 10000K | 120° | 120° | 120° | 120° | 120° |
| DS009 | 900 | 10000K | 120° | 120° | 120° | 120° | 120° |
| DS010 | 1000 | 10000K | 120° | 120° | 120° | 120° | 120° |

| Control Options | Other Options | Finish |
|-----------------|---------------|--------|
| DS001 | DS001 | DS001 |
| DS002 | DS002 | DS002 |
| DS003 | DS003 | DS003 |
| DS004 | DS004 | DS004 |
| DS005 | DS005 | DS005 |
| DS006 | DS006 | DS006 |
| DS007 | DS007 | DS007 |
| DS008 | DS008 | DS008 |
| DS009 | DS009 | DS009 |
| DS010 | DS010 | DS010 |

| Accessories | Notes |
|-------------|-------|
| DS001 | DS001 |
| DS002 | DS002 |
| DS003 | DS003 |
| DS004 | DS004 |
| DS005 | DS005 |
| DS006 | DS006 |
| DS007 | DS007 |
| DS008 | DS008 |
| DS009 | DS009 |
| DS010 | DS010 |

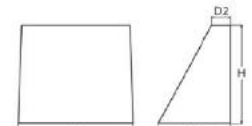


WDGE1 LED Architectural Wall Sconce



Specifications

| | |
|---------------------------|-------|
| Depth (D1): | 5.5" |
| Depth (D2): | 1.5" |
| Height: | 8" |
| Width: | 9" |
| Weight (without options): | 9 lbs |



Introduction

The WDGE1 LED family is designed to meet specifier's every wall-mounted lighting need in a widely accepted shape that blends with any architecture. The clean, rectangular design comes in four sizes with lumen packages ranging from 1,200 to 25,000 lumens, providing true site-wide solution. WDGE1 delivers up to 2,000 lumens with a soft, non-pixelated light source, creating a visually comfortable environment. The compact size of WDGE1, with its integrated emergency battery backup option, makes it an ideal over-the-door wall-mounted lighting solution.

WDGE LED Family Overview

| Luminaire | Standard TM, °C | Standard TM, °C | Series | P1 | P2 | P3 | P4 | P5 | P6 |
|-----------|-----------------|-----------------|--------|--------|--------|--------|--------|--------|--------|
| WDGE1 LED | 10000K | 10000K | 10000K | 1,200 | 2,000 | 3,000 | 4,000 | 5,000 | 6,000 |
| WDGE2 LED | 10000K | 10000K | 10000K | 7,500 | 8,500 | 10,000 | 12,000 | 14,000 | 16,000 |
| WDGE3 LED | 10000K | 10000K | 10000K | 12,000 | 16,000 | 18,000 | 20,000 | 22,000 | 25,000 |

Ordering Information

| Series | Package | Color Temperature | CR | Discontinuation | Voltage | Mounting |
|-----------|---------|-------------------|-------|-----------------|---------|----------------------|
| WDGE1 LED | P1 | 27K | 2700K | 9000K | VF | Small corner bracket |
| WDGE1 LED | P2 | 30K | 3000K | 9000K | VF | Small corner bracket |
| WDGE1 LED | P3 | 35K | 3500K | 9000K | VF | Small corner bracket |
| WDGE1 LED | P4 | 40K | 4000K | 9000K | VF | Small corner bracket |
| WDGE1 LED | P5 | 50K | 5000K | 9000K | VF | Small corner bracket |
| WDGE1 LED | P6 | 55K | 5500K | 9000K | VF | Small corner bracket |

| Options | Finish |
|---------|--------|
| DS001 | DS001 |
| DS002 | DS002 |
| DS003 | DS003 |
| DS004 | DS004 |
| DS005 | DS005 |
| DS006 | DS006 |
| DS007 | DS007 |
| DS008 | DS008 |
| DS009 | DS009 |
| DS010 | DS010 |

| Accessories | Notes |
|-------------|-------|
| DS001 | DS001 |
| DS002 | DS002 |
| DS003 | DS003 |
| DS004 | DS004 |
| DS005 | DS005 |
| DS006 | DS006 |
| DS007 | DS007 |
| DS008 | DS008 |
| DS009 | DS009 |
| DS010 | DS010 |

Design Guidelines

Section 11-6-3

- | | |
|---|---------------------------------------------------|
| ✓ | Defined primary entrances |
| ✓ | Walls articulated and proportioned to human scale |
| ✓ | Incorporation of three different materials |

Summary

Findings

Staff is seeking your review and recommendation on the following:

- ✓ Proposed building and landscape architecture

Staff welcomes any feedback



DESIGN REVIEW BOARD

August 9, 2022