



DESIGN REVIEW BOARD

August 9, 2022



DRB22-00604



Request

- Design Review

Purpose

- To allow for an industrial development

Location

- North of Pecos Road
- East of Mountain Road

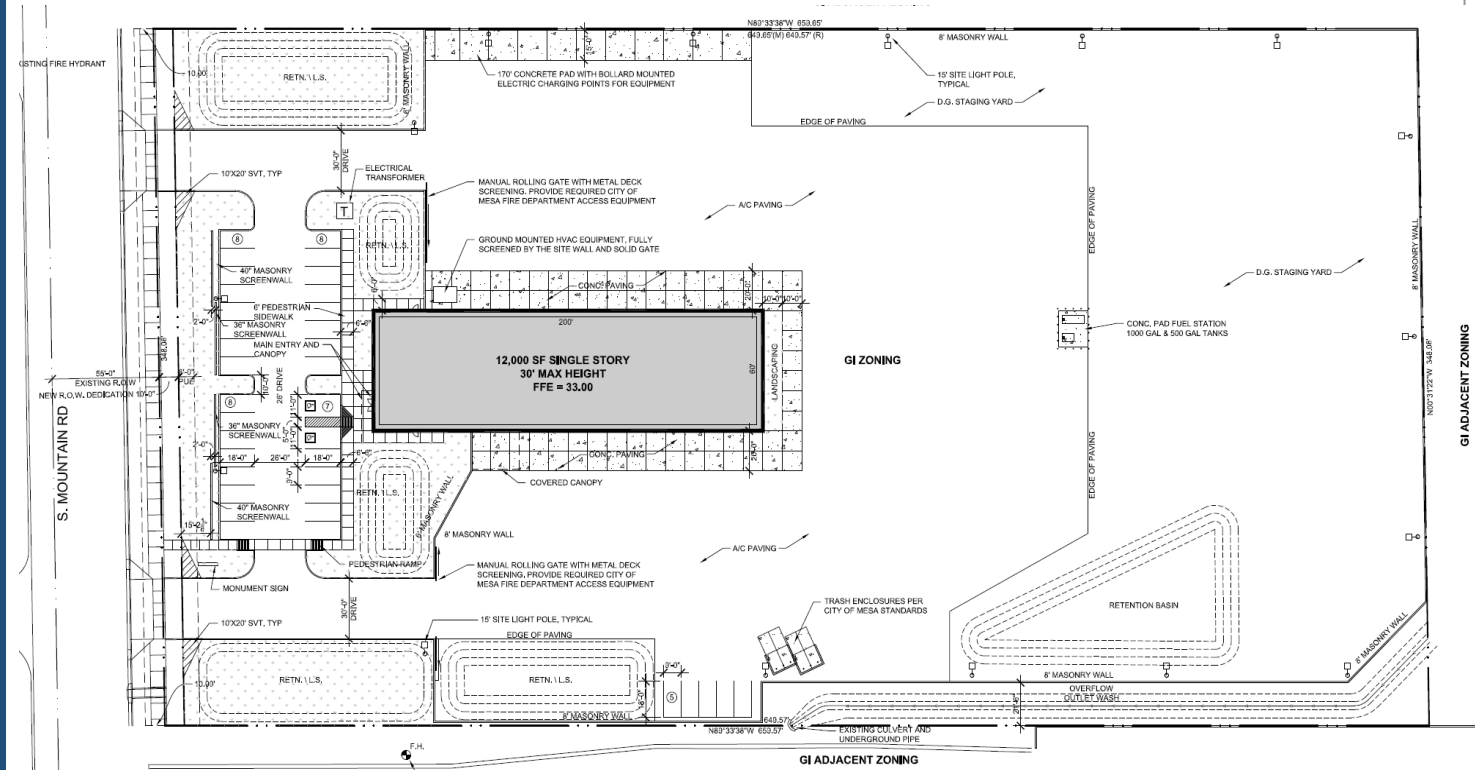


Site Photo



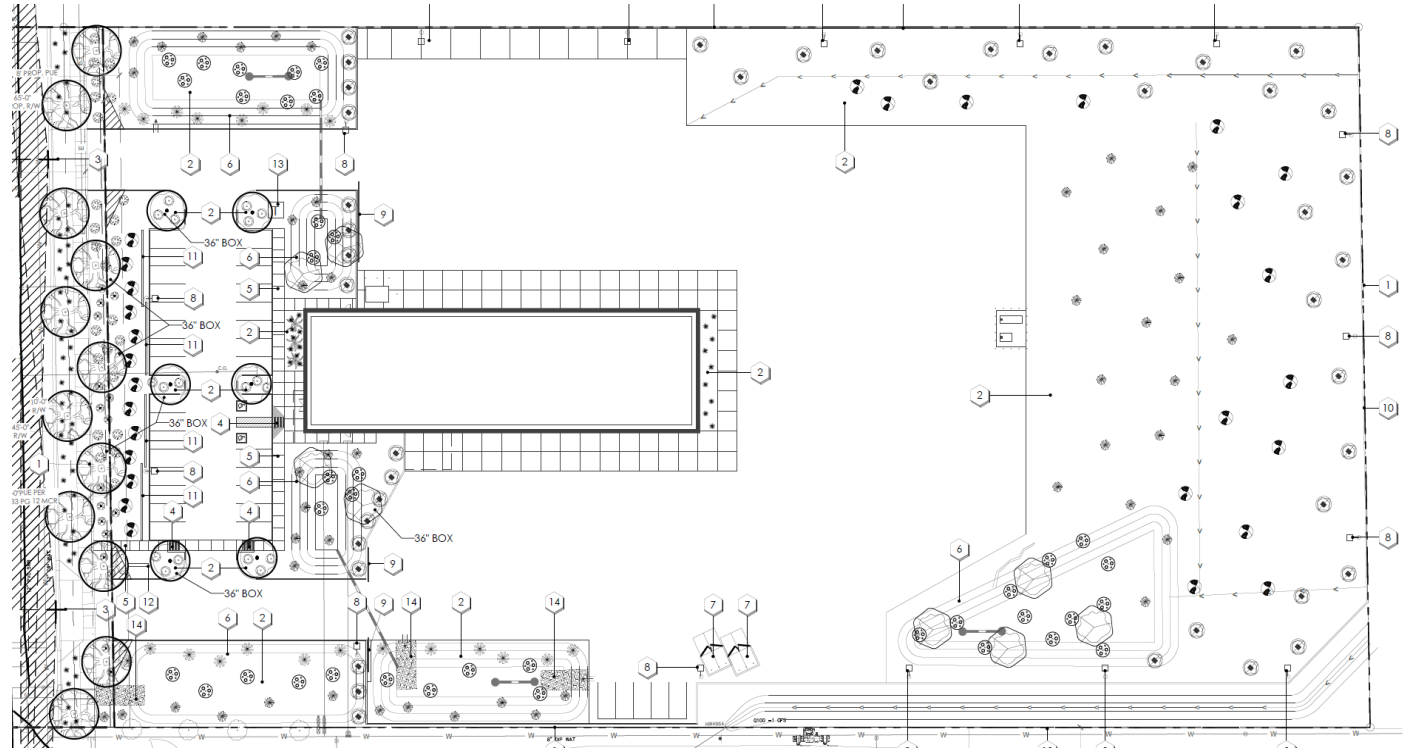
Looking east towards the site from Mountain Road

- Office in front, loading docks in rear



Landscape Plan

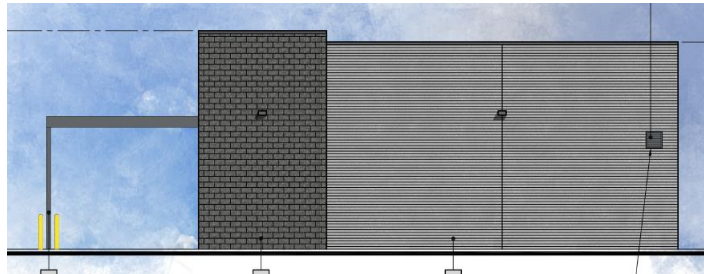
- Palo Brea, Palo Verde, Mesquite
- Employee amenities
- Enhanced foundation base at entry



Elevations



North Elevation



East Elevation



West Elevation



South Elevation

Renderings



Color and Materials



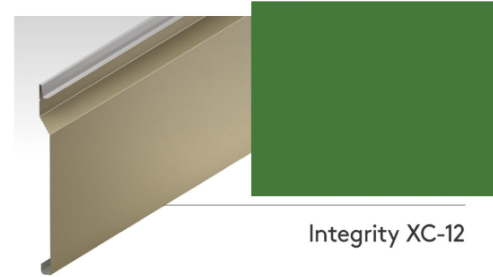
**A. 8X4X16 MASONRY BLOCK
NATURAL GREY FINISH**



**B. 8X8X16 MASONRY BLOCK
ECHELON MASONRY
4106 "BLACK"
SPLIT FACE FINISH**



**C. 8X8X16 MASONRY BLOCK
FENCE WALL, NATURAL GREY FINISH**



**D. METAL PANEL SYSTEM
KINGSPAN INTEGRITY XC-12
CUSTOM COLOR TO MATCH
PANTONE PMS-356 "GREEN"**



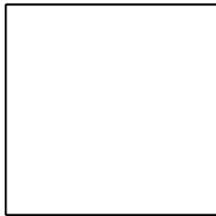
**E. PAINT
SHERWIN WILLIAMS
SW 7075 "WEB GREY"**



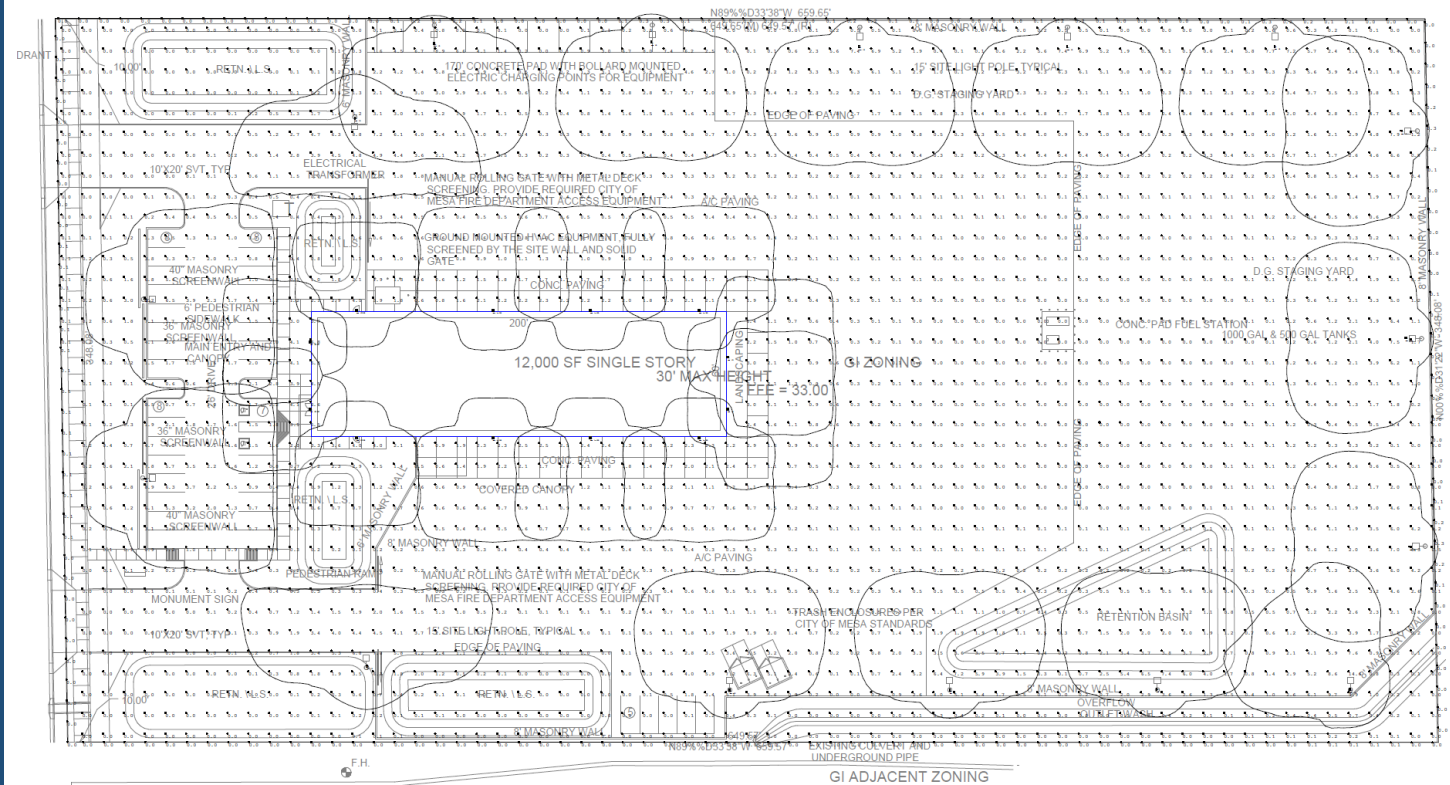
**E. ALUMINUM STOREFRONT
CLEAR ANODIZED ALUMINUM
1" INSULATED GLAZING
U=0.4 SHGC =0.25**



**G. SECTIONAL OVERHEAD DOOR
OVERHEAD DOOR CO.
FACTORY FINISH "WHITE"
TEMPERED VISION PANELS**



**H. PAINT
DUNN EDWARDS
"WHITE"**



Design Standards

11-7-3

No uninterrupted wall lengths exceeding 50 feet

Varied building height

Parapet detailing

Three materials

Alternative Compliance

No more than 50% of façade may be covered in one material

Summary

Findings

- ✓ Staff is seeking your review and recommendation on the following:
 - Alternative Compliance for materials
 - Staff welcomes any feedback



DESIGN REVIEW BOARD

August 9, 2022