



DESIGN REVIEW BOARD

August 9, 2022



DRB22-00670



Request

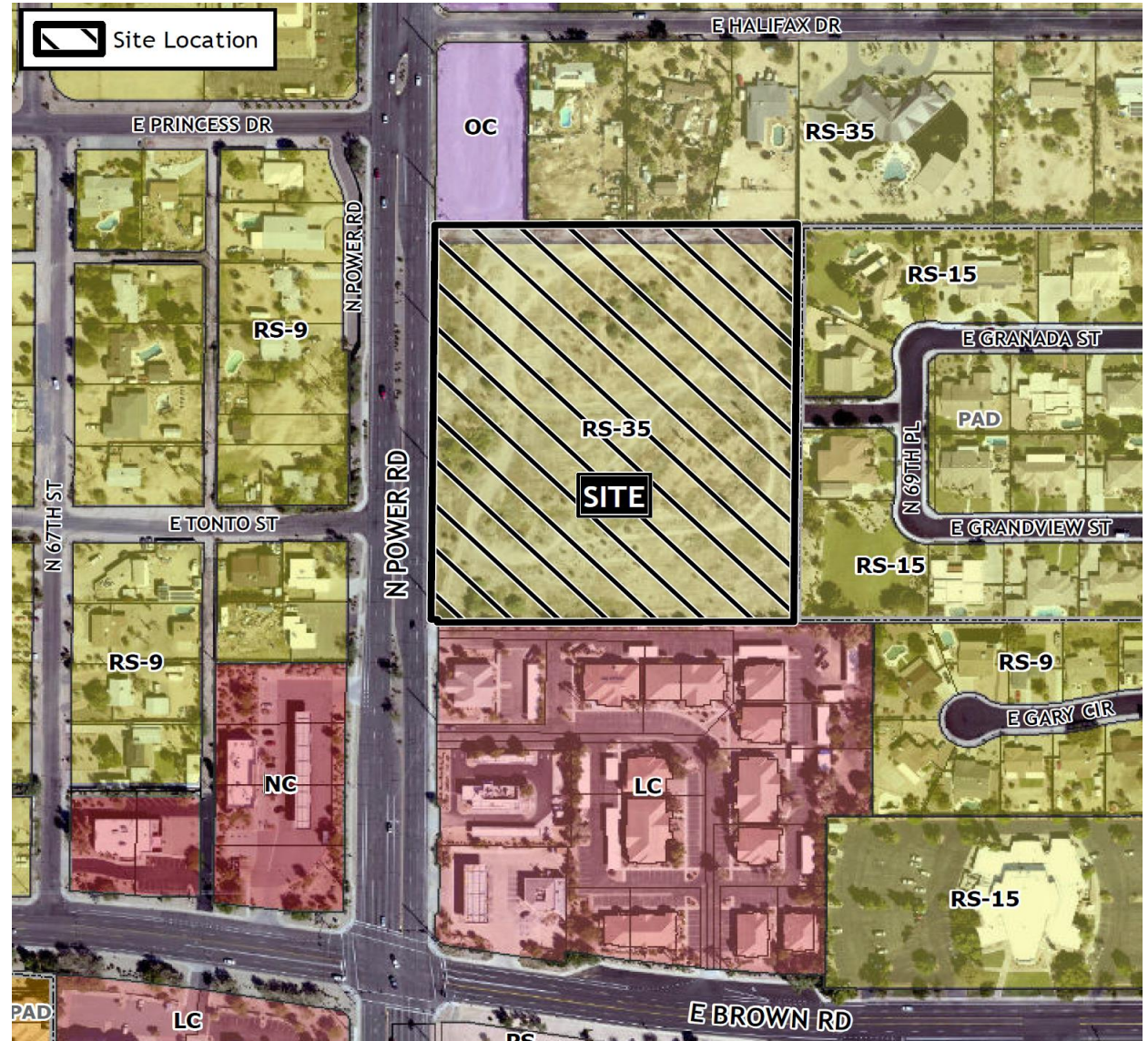
- Design Review

Purpose

- To allow for a public safety facility

Location

- North of Brown Road
- East of Power Road



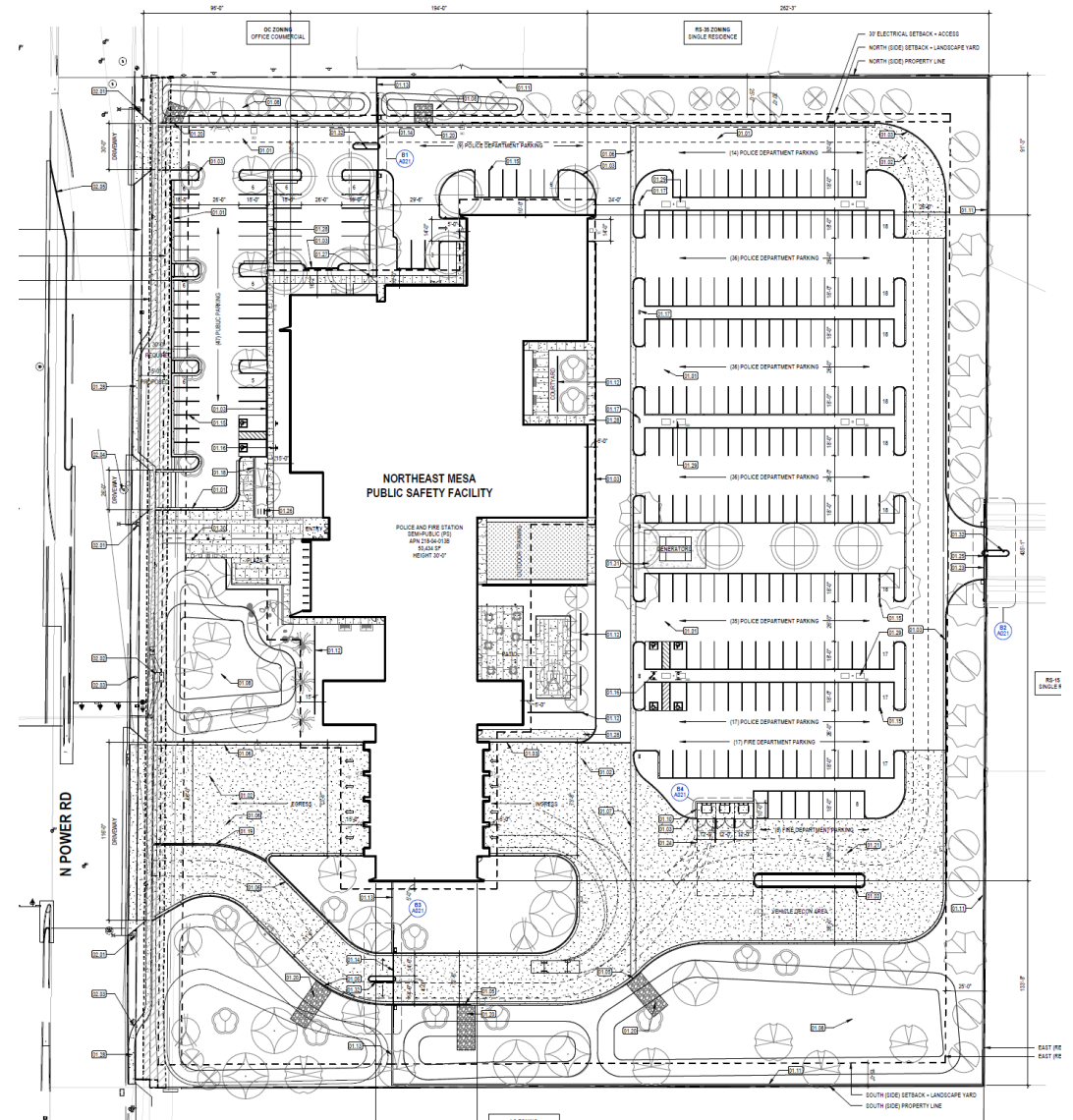
Site Photo



Looking east towards the site from Power Road

Site Plan

- 50,434 SF building
- Community Rooms
- Police Sub-station + parking
- Fire Station

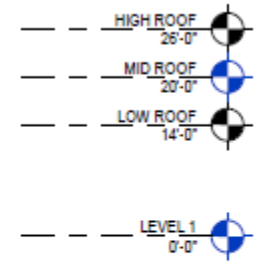


Landscape Plan

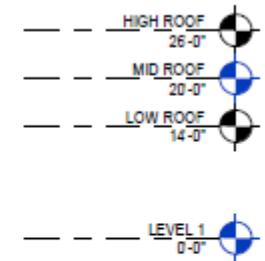
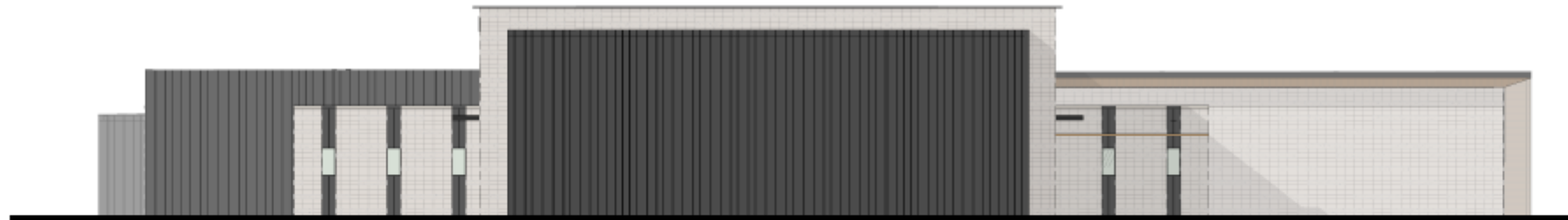
- Mulga, Willow Acacia, White Orchid, Cascalote, Desert Willow, Ironwood, Palo Verde, Mesquite, Texas Mountain Laurel, Evergreen Elm
- Buffer single residences to north and east



Elevations



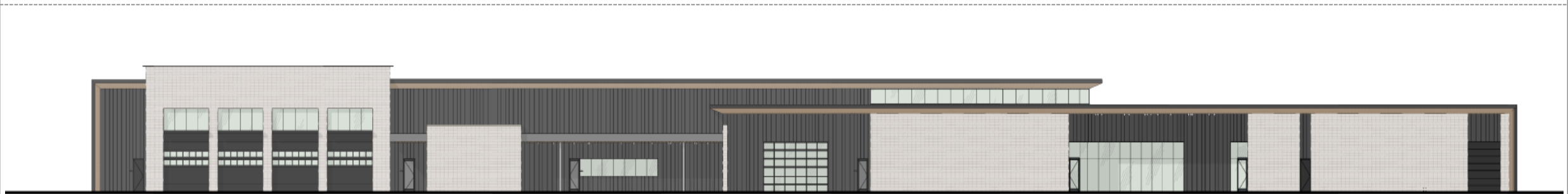
4 NORTH ELEVATION_COLOR
1/16" = 1'-0"



3 SOUTH ELEVATION_COLOR
1/16" = 1'-0"



Elevations



2 EAST ELEVATION_COLOR
1/16" = 1'-0"



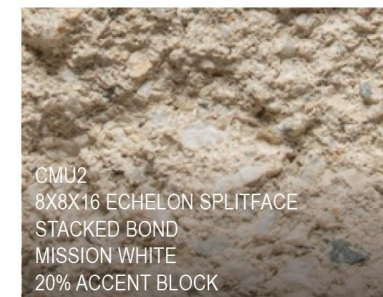
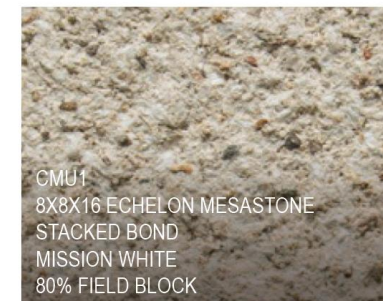
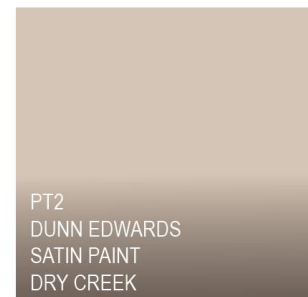
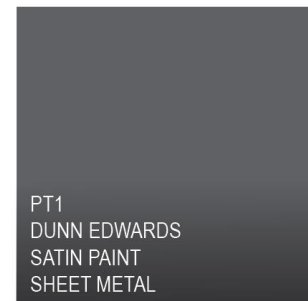
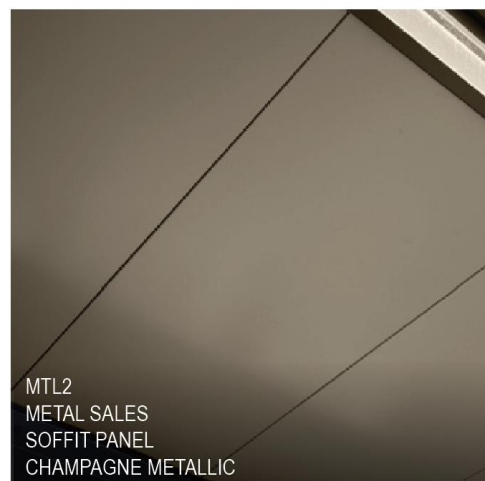
1 WEST ELEVATION_COLOR
1/16" = 1'-0"



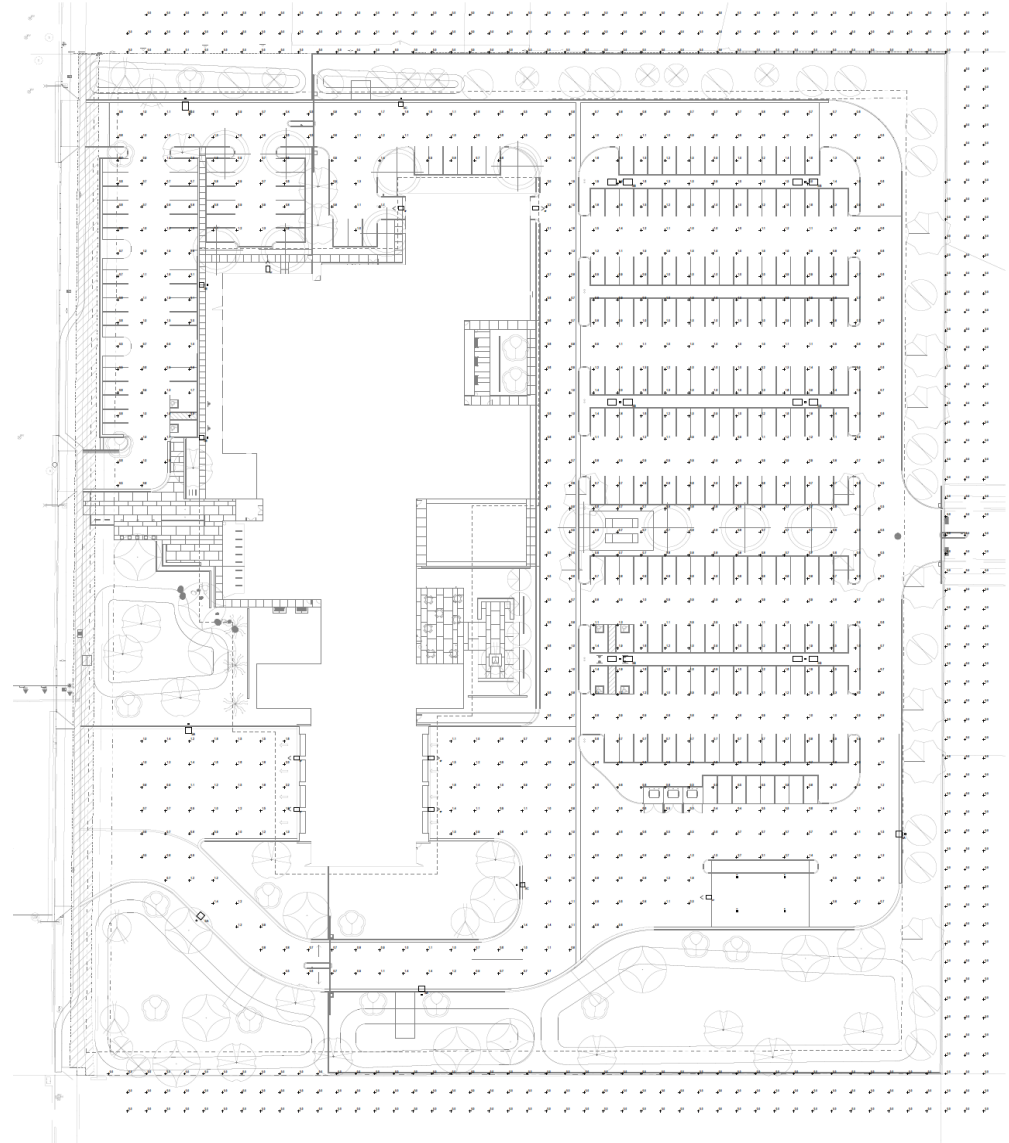
Renderings



Color and Materials



Lighting



Summary

- No design standards in the PS zoning district
- Elevations reviewed by City stakeholders, City Manager & City Council
- Proposed development meets Quality Development Design Guidelines
 - Emphasis of building entrances
 - Consistent with context of area
 - Diversity in massing
 - Variety of materials

Summary

Findings

- ✓ Staff is seeking your review and recommendation and welcomes any feedback



DESIGN REVIEW BOARD

August 9, 2022