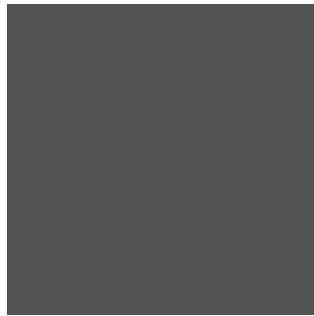




FIELD COLOR
STUCCO PAINTED
DUNN EDWARDS
#DEC785 "WHISPER GRAY"



PAINTED METAL / ACCENT
DUNN EDWARDS
#DE6364 "CAVERNOUS"



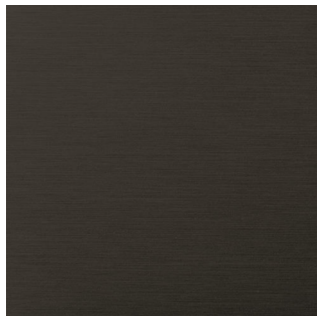
FIELD BLOCK
SMOOTH FACE CMU
INTEGRAL COLOR
"OPAL"



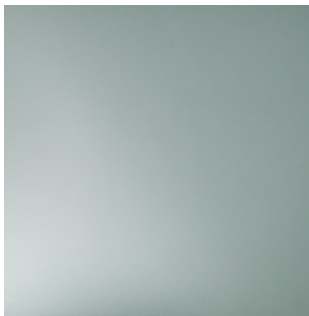
FIELD BLOCK
SMOOTH FACE CMU
INTEGRAL COLOR
"AUTUMN"



FIELD BLOCK
SMOOTH FACE CMU
INTEGRAL COLOR
"HUNTINGTON GRAY"



STOREFRONT SYSTEM
DARK BRONZE
ANODIZED ALUMINUM



INSULATED GLASS UNIT
VITRO
SOLARBAN Z50 (2) CLEAR +
CLEAR GLASS OR SIMILAR



WALL MOUNTED LIGHTING
LITHONIA LIGHTING
WDGE2 LED
FINISH DDBXD "DARK BRONZE"



LITTER RECEPTACLE
KEYSTONE RIDGE
READING
FINISH "BRONZE"



BENCH
KEYSTONE RIDGE
PULLMAN
FINISH "BRONZE"



ASH RECEPTACLE
KEYSTONE RIDGE
PULLMAN
FINISH "BRONZE"



OLYMPUS GATEWAY SMALL BAY INDUSTRIAL

8934 E. WALTHAM AVE, MESA, AZ 85212

MATERIAL BOARD

20-008.0

8.04.2022

1048 N. 44th St. #200 Phoenix, AZ 85008
602.952.8585 www.pdi-az.com

DR-11



PULLMAN

The **PULLMAN FLAT BENCH** is a popular, classic choice for any setting. The workhorse of commercial benches, this versatile series delivers the required stability needed for any project and an appearance that blends with varied decors.



STANDARD FEATURES

- Color: exclusive KEYSHIELD® polyester powder coating finish
- Support: bolt down or freestanding
- Fully assembled unit
- Continuous weld seams
- Three-year warranty
- Made in the USA



CUSTOM OPTIONS

- Color: custom KEYSHIELD® powder coat
- Support: bury extension
- Materials: sustainable hardwood, stainless steel, recycled plastic
- Arms: center arms, additional arms, no arms
- Curves, reverse curves, angles
- Custom length



ENHANCEMENTS

- Inquire about coordinating litter receptacles, ash urns, planters, tables and other furnishings



670 Mercer Road | Butler, PA 16001-1840
Toll-free: 1-800-284-8208 | Phone: 724-284-1213 | Fax: 724-284-1253
www.keystoneridgedesigns.com



PULLMAN

PULLMAN FLAT BENCH

All Pullman pieces are Exclusive By Design™.

KEYSHIELD® METAL FINISH

The trademarked KEYSHIELD® finish protects each piece of furniture from chipping, cracking, and UVA damage while providing unparalleled corrosion resistance. Steel products are finished with a two-coat powder coating process applied to a 7-15 mil thickness. Substrate preparation includes sandblasting to a white finish to remove all surface contaminants. The raw product then receives a corrosion-inhibiting phosphate coating prior to the application of the powder coating. The first coat applied to the substrate is zinc rich epoxy powder primer used exclusively on sandblasted parts. The second coat is a colored polyester powder coating. Both coats are electrostatically applied and oven cured according to powder coating manufacturing specifications to create a smooth, satin-like finish and a low-emitting non-porous armor.

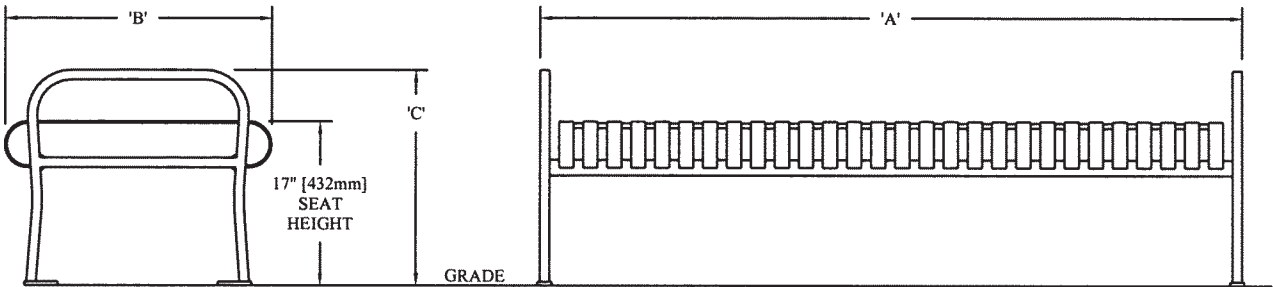
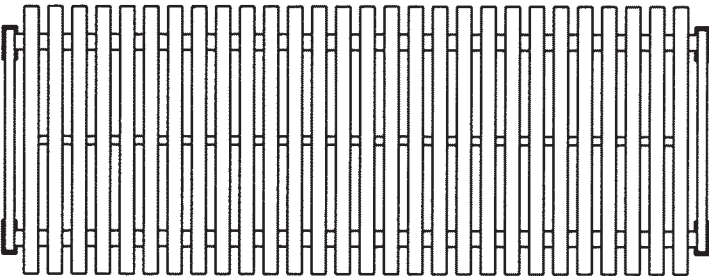
	P14 4ft	P16 6ft	P18 8ft
LENGTH (A)	48 1/2"	73 1/2"	93 1/2"
WIDTH (B)	27 3/4"	27 3/4"	27 3/4"
HEIGHT (C)	22 1/4"	22 1/4"	22 1/4"
SEAT HEIGHT	17"	17"	17"
WEIGHT	140 lbs.	165 lbs.	206 lbs.

FULLY ASSEMBLED UNIT

The Pullman flat bench is manufactured in the USA as a fully assembled unit to provide ultimate stability and avoid damage during transit to the site, saving time and money.

MATERIALS

Commercial-grade materials, at least 25% recycled raw steel, 100% recyclable steel; completely welded for optimum strength and stability according to Keystone Ridge Designs, Inc. CAD drawing; vertical 3/16" x 1-1/2" steel straps evenly spaced 1" apart attached to 1-1/2" O.D. steel tubing ergonomic center frame; 1/2" O.D. steel tubing support bars connect seat straps to ensure structural integrity; mounted on 1" square solid legs.



PROPRIETARY STATEMENT

Keystone Ridge Designs, Inc.® is proud to offer the design community exceptional site amenities. Due to the time and resources invested in designing, manufacturing and marketing Keystone Ridge Designs' products and services,

we pursue design patents, copyrights, trademarks and service marks whenever possible. Any unlawful duplication or misrepresentation of Keystone Ridge Designs' products will be rigorously protected.





READING

The **READING ROUND LITTER RECEPTACLE** allows you the freedom to coordinate with a bench series, or mix and match for an eclectic motif. Beautify your surroundings with our exclusive collection of litter receptacles.



STANDARD FEATURES

- Color: exclusive KEYSHIELD® polyester powder coating finish
- Support: elevated or adjustable
- Liner: commercial-grade plastic
- Lid: matching flat lid with anti-theft lanyard
- Fully assembled unit
- Continuous weld seams
- Three-year warranty
- Made in the USA



CUSTOM OPTIONS

- Color: custom KEYSHIELD® powder coat
- Support: bury extension
- Liner: galvanized or powder coated steel
- Lid: elevated, elevated ash, dome, ash dome, dome with galvanized door, recycling and trash
- Materials: sustainable hardwood, stainless steel, recycled plastic



ENHANCEMENTS

- Inquire about coordinating benches, ash urns, planters, tables and other furnishings
- Litter mount ash tower
- Cast bronze plaques
- Laser cuts
- Decals



670 Mercer Road | Butler, PA 16001-1840
Toll-free: 1-800-284-8208 | Phone: 724-284-1213 | Fax: 724-284-1253
www.keystoneridgedesigns.com



READING

READING ROUND LITTER RECEPTACLE

The Reading bench with back is covered by Patent No. Des. D376,270. All other Reading pieces are Exclusive By Design™.

KEYSHIELD® METAL FINISH

The trademarked KEYSHIELD® finish protects each piece of furniture from chipping, cracking, and UVA damage while providing unparalleled corrosion resistance. Steel products are finished with a two-coat powder coating process applied to a 7-15 mil thickness. Substrate preparation includes sandblasting to a white finish to remove all surface contaminants. The raw product then receives a corrosion-inhibiting phosphate coating

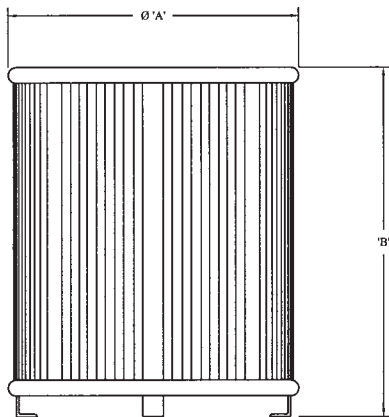
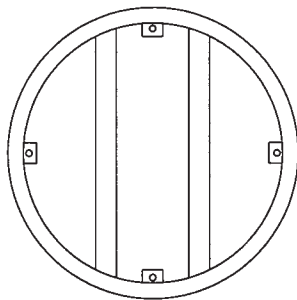
prior to the application of the powder coating. The first coat applied to the substrate is zinc rich epoxy powder primer used exclusively on sandblasted parts. The second coat is a colored polyester powder coating. Both coats are electrostatically applied and oven cured according to powder coating manufacturing specifications to create a smooth, satin-like finish and a low-emitting non-porous armor.

FULLY ASSEMBLED UNIT

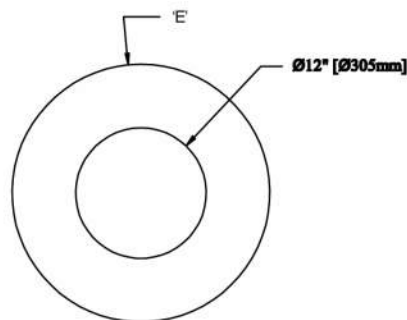
The Reading round litter receptacle is manufactured in the USA as a fully assembled unit to provide ultimate stability and avoid damage during transit to the site, saving time and money.

MATERIALS

Fully-welded commercial-grade steel construction.



	RE3-22	RE3-32	RE3-38
	22 gal.	32 gal.	38 gal.
DIAMETER (A)	24"	28"	28"
ELEVATED LEG (B)	28 3/4"	33 1/2"	33 1/2"
ADJUSTABLE LEG	27 3/4"	32 1/2"	32 1/2"
LID DIAMETER (E)	19 1/2"	23 5/8"	23 5/8"
WEIGHT	130 lbs.	165 lbs.	175 lbs.



FLAT LID DETAIL

PROPRIETARY STATEMENT

Keystone Ridge Designs, Inc.® is proud to offer the design community exceptional site amenities. Due to the time and resources invested in designing, manufacturing and marketing Keystone Ridge Designs' products and services,

we pursue design patents, copyrights, trademarks and service marks whenever possible. Any unlawful duplication or misrepresentation of Keystone Ridge Designs' products will be rigorously protected.



670 Mercer Road | Butler, PA 16001-1840
Toll-free: 1-800-284-8208 | Phone: 724-284-1213 | Fax: 724-284-1253
www.keystoneridgedesigns.com



PULLMAN

The **PULLMAN ASH URN** allows you the freedom to coordinate with a bench series, or mix and match for an eclectic motif. Beautify your surroundings with our exclusive collection of ash urns.



P5



STANDARD FEATURES

- Color: exclusive KEYSHIELD® polyester powder coating finish
- Support: elevated or adjustable
- Stainless steel ash insert with anti-theft lanyard
- Fully assembled unit
- Continuous weld seams
- Three-year warranty
- Made in the USA



CUSTOM OPTIONS

- Color: custom KEYSHIELD® powder coat
- Support: bury extension
- Materials: sustainable hardwood, stainless steel, recycled plastic
- Sleeve: KEYSHIELD® powder coat color



ENHANCEMENTS

- Inquire about coordinating benches, litter receptacles, planters, tables, and other furnishings
- Ash filler
- Ash sifter



670 Mercer Road | Butler, PA 16001-1840
Toll-free: 1-800-284-8208 | Phone: 724-284-1213 | Fax: 724-284-1253
www.keystoneridgedesigns.com



PULLMAN

PULLMAN ASH URN

All Pullman pieces are Exclusive By Design™.

KEYSHIELD® METAL FINISH

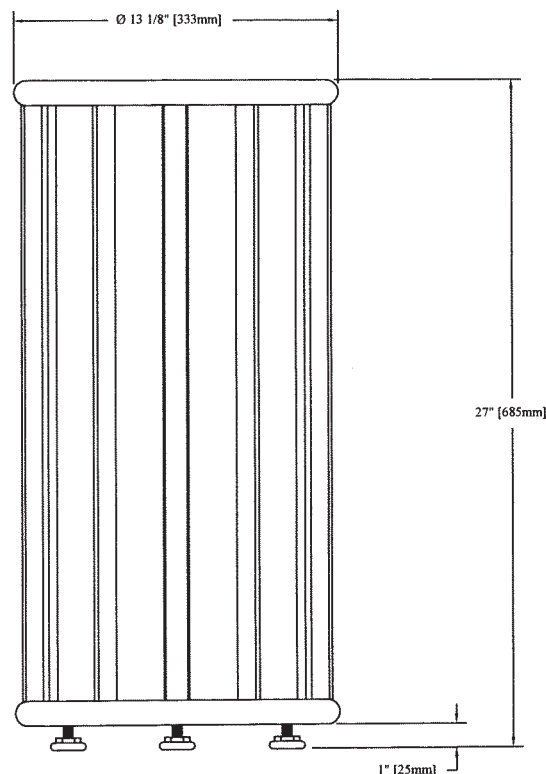
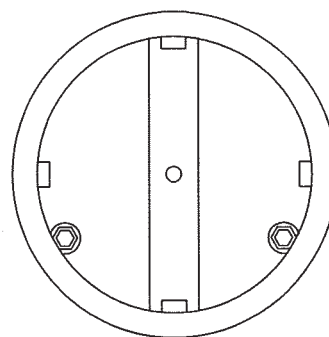
The trademarked KEYSHIELD® finish protects each piece of furniture from chipping, cracking, and UVA damage while providing unparalleled corrosion resistance. Steel products are finished with a two-coat powder coating process applied to a 7-15 mil thickness. Substrate preparation includes sandblasting to a white finish to remove all surface contaminants. The raw product then receives a corrosion-inhibiting phosphate coating prior to the application of the powder coating. The first coat applied to the substrate is zinc rich epoxy powder primer used exclusively on sandblasted parts. The second coat is a colored polyester powder coating. Both coats are electrostatically applied and oven cured according to powder coating manufacturing specifications to create a smooth, satin-like finish and a low-emitting non-porous armor.

FULLY ASSEMBLED UNIT

The Pullman ash urn is manufactured in the USA as a fully assembled unit to provide ultimate stability and avoid damage during transit to the site, saving time and money.

MATERIALS

Fully-welded commercial-grade steel construction.



	P5
WIDTH	13 1/8"
ELEVATED LEG	28"
ADJUSTABLE LEG	27"
WEIGHT	75 lbs.

PROPRIETARY STATEMENT

Keystone Ridge Designs, Inc.® is proud to offer the design community exceptional site amenities. Due to the time and resources invested in designing, manufacturing and marketing Keystone Ridge Designs' products and services,

we pursue design patents, copyrights, trademarks and service marks whenever possible. Any unlawful duplication or misrepresentation of Keystone Ridge Designs' products will be rigorously protected.



670 Mercer Road | Butler, PA 16001-1840
Toll-free: 1-800-284-8208 | Phone: 724-284-1213 | Fax: 724-284-1253
www.keystoneridgedesigns.com