



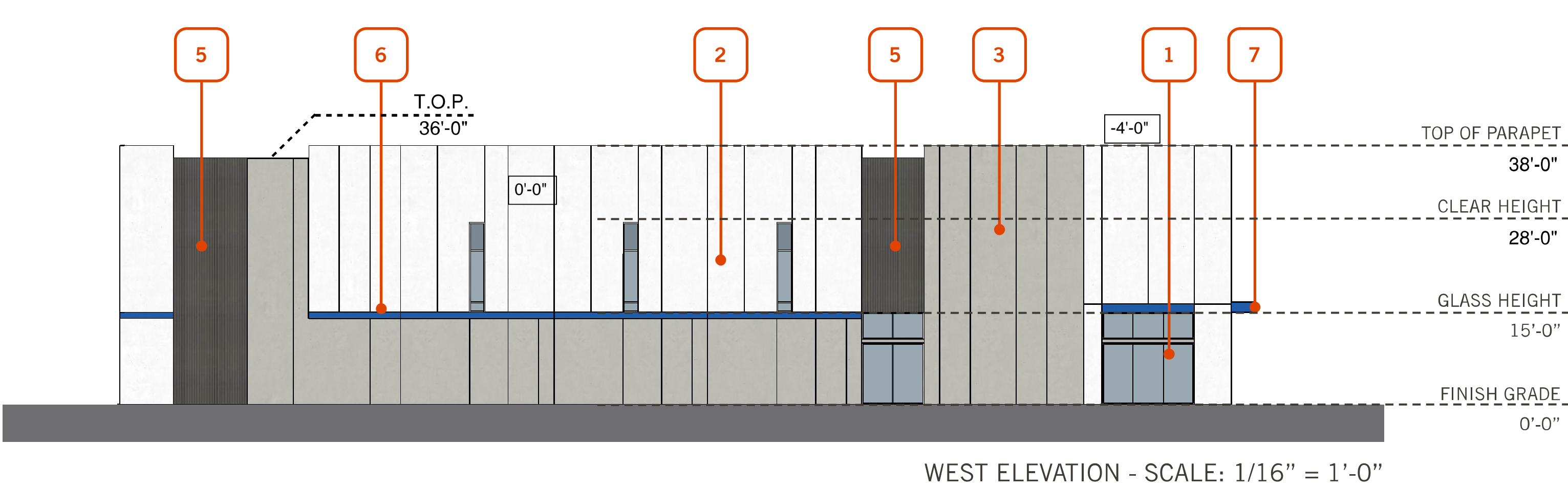
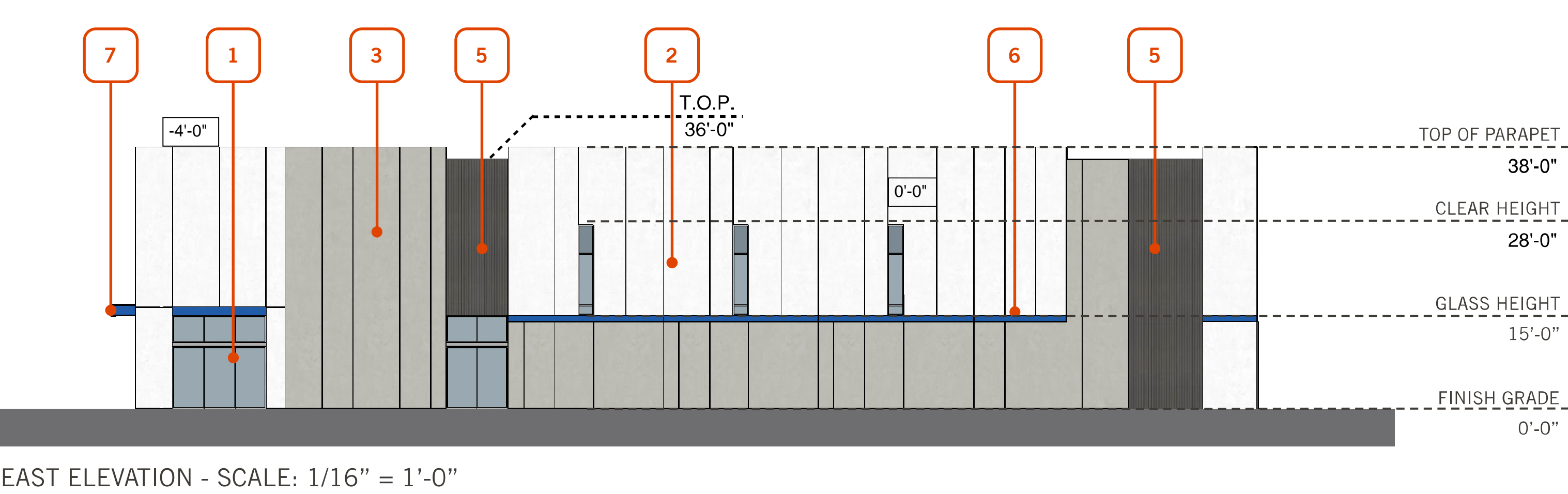
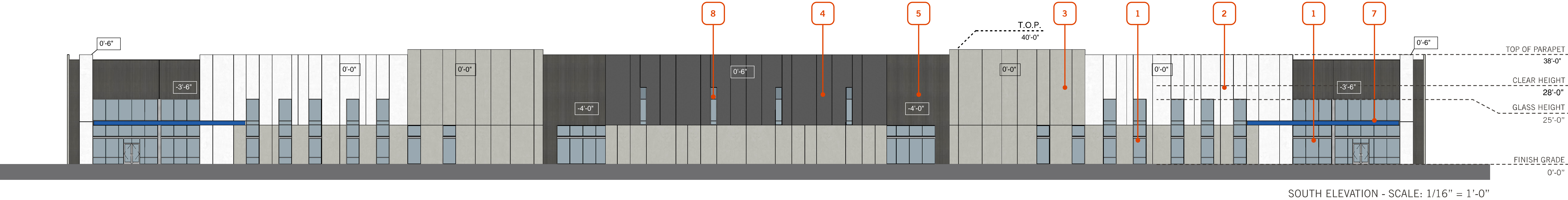
PECOS GATEWAY INDUSTRIAL

E PECOS ROAD
MESA, ARIZONA

CONCEPTUAL DESIGN
PHX22-0149-00
04.20.2022

WARE MALCOMB





KEYNOTES

- | | | | | | |
|---|--|---|--|---|--|
| 1 | CLEAR ANODIZED ALUMINUM STOREFRONT SYSTEM W/ HIGH PERFORMANCE INSULATED GLAZING 4% MATERIAL COVERAGE | 4 | CONCRETE TILT - UP PANEL WITH REVEALS AS SHOWN, PAINTED: SHERWIN WILLIAMS: PEPPERCORN - SW 7674 9% MATERIAL COVERAGE | 7 | CHANNEL BEAM CANOPY 2% MATERIAL COVERAGE |
| 2 | CONCRETE TILT - UP PANEL WITH REVEALS AS SHOWN, PAINTED: SHERWIN WILLIAMS: EXTRA WHITE - SW 7006 42% MATERIAL COVERAGE | 5 | FORMLINER, PAINTED: SHERWIN WILLIAMS: PEPPERCORN - SW 7674 7% MATERIAL COVERAGE | 8 | CLERESTORY WINDOW 5% MATERIAL COVERAGE |
| 3 | CONCRETE TILT - UP PANEL WITH REVEALS AS SHOWN, PAINTED: SHERWIN WILLIAMS: ARGOS - SW 7065 29% MATERIAL COVERAGE | 6 | ACCENT COLOR: SHERWIN WILLIAMS: FRANK BLUE - SW 6967 2% MATERIAL COVERAGE | | |



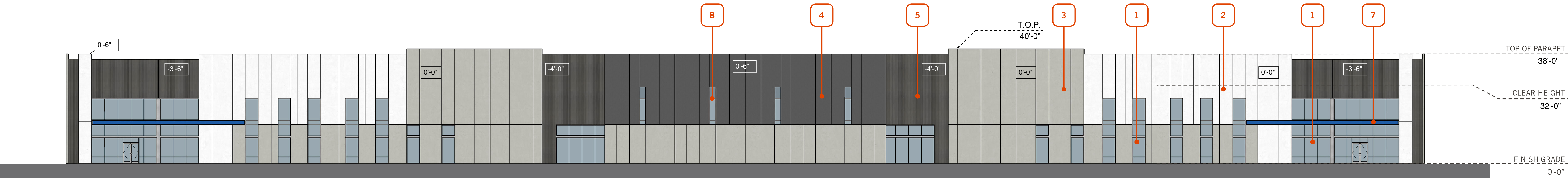
This conceptual design is based upon a preliminary review of entitlement requirements and on unverified and possibly incomplete site and/or building information, and is intended merely to assist in exploring how the project might be developed. Signage shown is for illustrative purposes only and does not necessarily reflect municipal code compliance. All colors shown are for representative purposes only. Refer to material samples for actual color verification.

BUILDING 1 EXTERIOR ELEVATIONS
PECOS GATEWAY INDUSTRIAL
MESA, ARIZONA - PHX22-0149-00

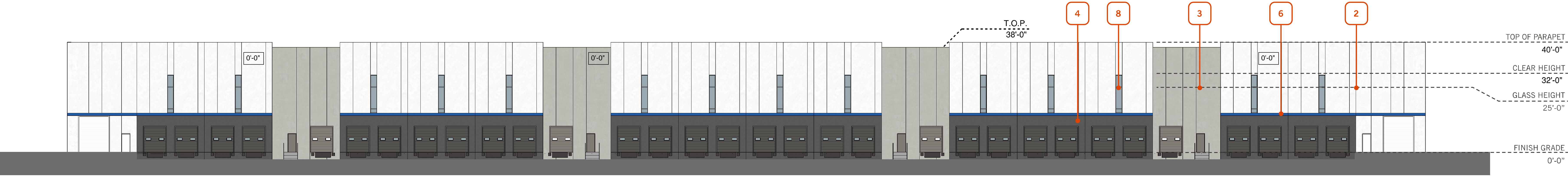
WARE MALCOMB

04.20.2022

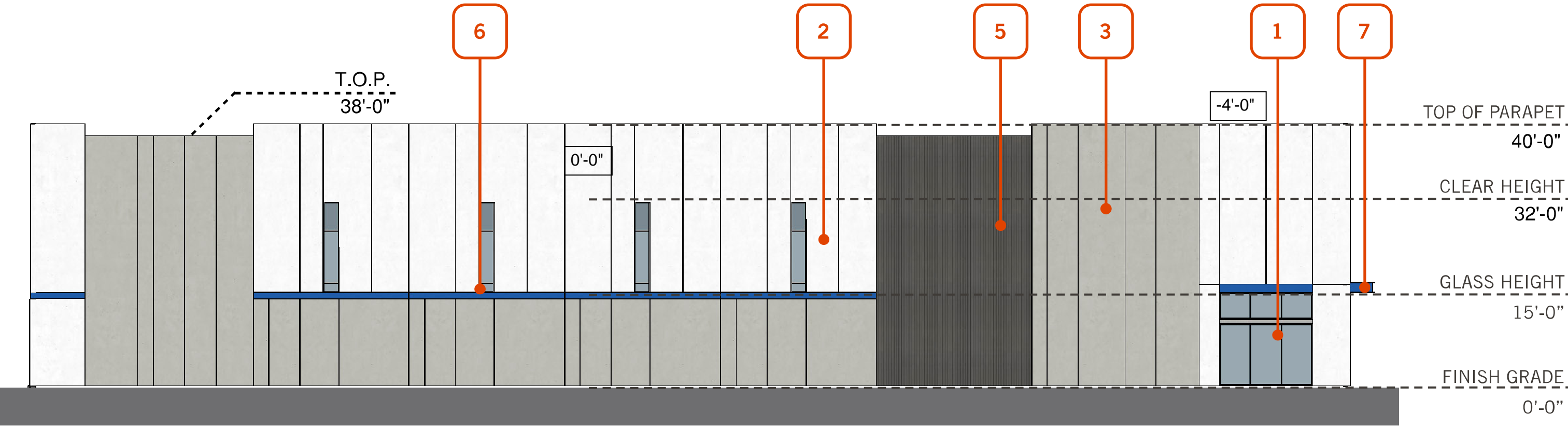
PAGE
3



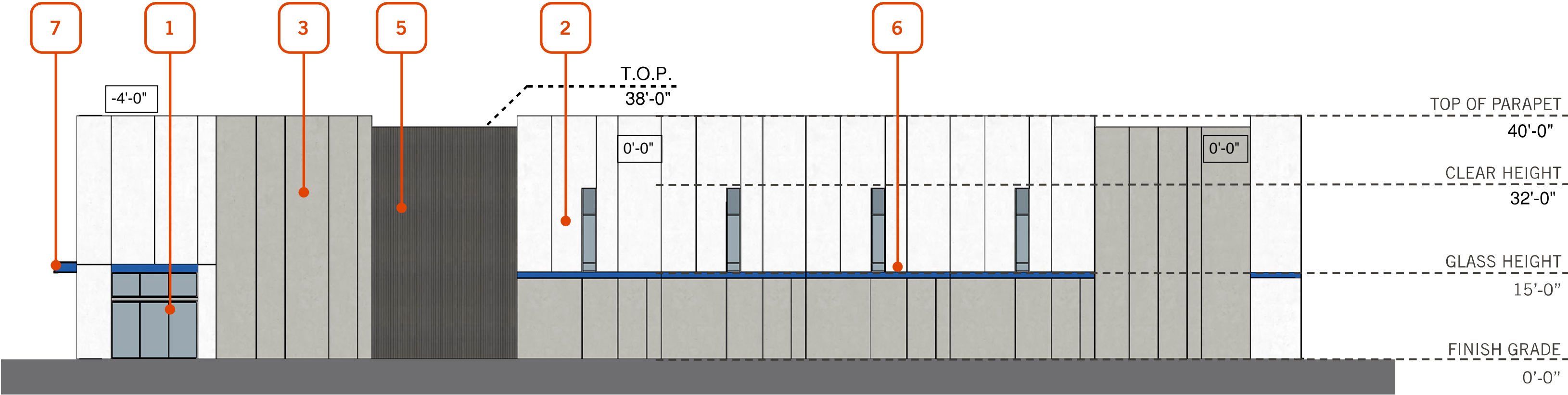
NORTH ELEVATION - SCALE: 1/16" = 1'-0"



SOUTH ELEVATION - SCALE: 1/16" = 1'-0"



EAST ELEVATION - SCALE: 1/16" = 1'-0"



WEST ELEVATION - SCALE: 1/16" = 1'-0"

KEYNOTES

- | | | | | | |
|---|--|---|---|---|--|
| 1 | CLEAR ANODIZED ALUMINUM STOREFRONT SYSTEM W/ HIGH PERFORMANCE INSULATED GLAZING 10% MATERIAL COVERAGE | 4 | CONCRETE TILT - UP PANEL WITH REVEALS AS SHOWN, PAINTED: SHERWIN WILLIAMS: PEPPERCORN - SW 7674 21% MATERIAL COVERAGE | 7 | CHANNEL BEAM CANOPY 2% MATERIAL COVERAGE |
| 2 | CONCRETE TILT - UP PANEL WITH REVEALS AS SHOWN, PAINTED: SHERWIN WILLIAMS: EXTRA WHITE - SW 7006 25% MATERIAL COVERAGE | 5 | FORMLINER, PAINTED: SHERWIN WILLIAMS: PEPPERCORN - SW 7674 10% MATERIAL COVERAGE | 8 | CLERESTORY WINDOW 5% MATERIAL COVERAGE |
| 3 | CONCRETE TILT - UP PANEL WITH REVEALS AS SHOWN, PAINTED: SHERWIN WILLIAMS: ARGOS - SW 7065 27% MATERIAL COVERAGE | 6 | ACCENT COLOR: SHERWIN WILLIAMS: FRANK BLUE - SW 6967 2% MATERIAL COVERAGE | | |



This conceptual design is based upon a preliminary review of entitlement requirements and on unverified and possibly incomplete site and/or building information, and is intended merely to assist in exploring how the project might be developed. Signage shown is for illustrative purposes only and does not necessarily reflect municipal code compliance. All colors shown are for representative purposes only. Refer to material samples for actual color verification.

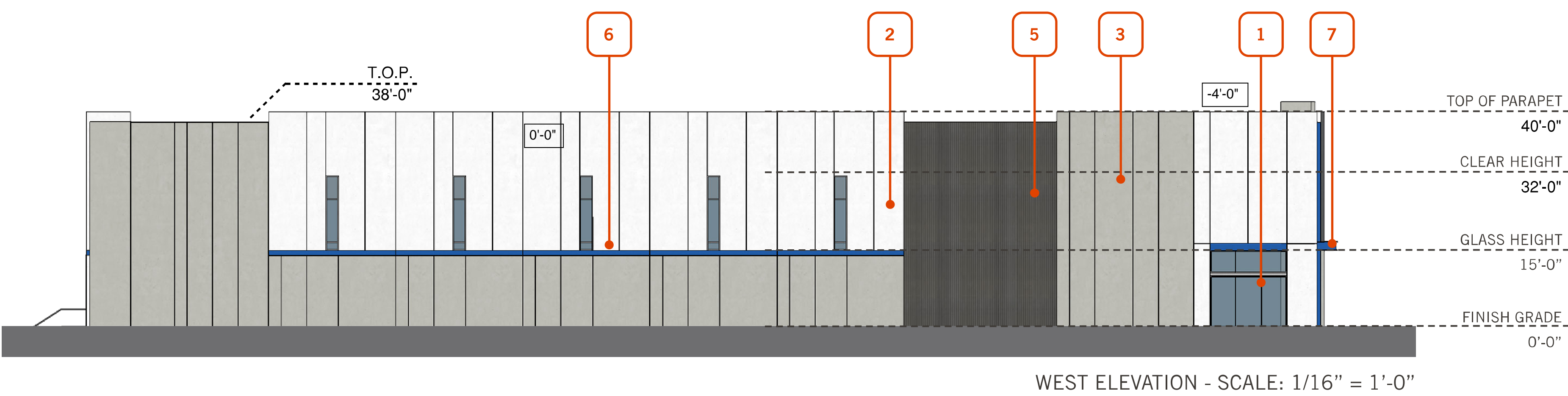
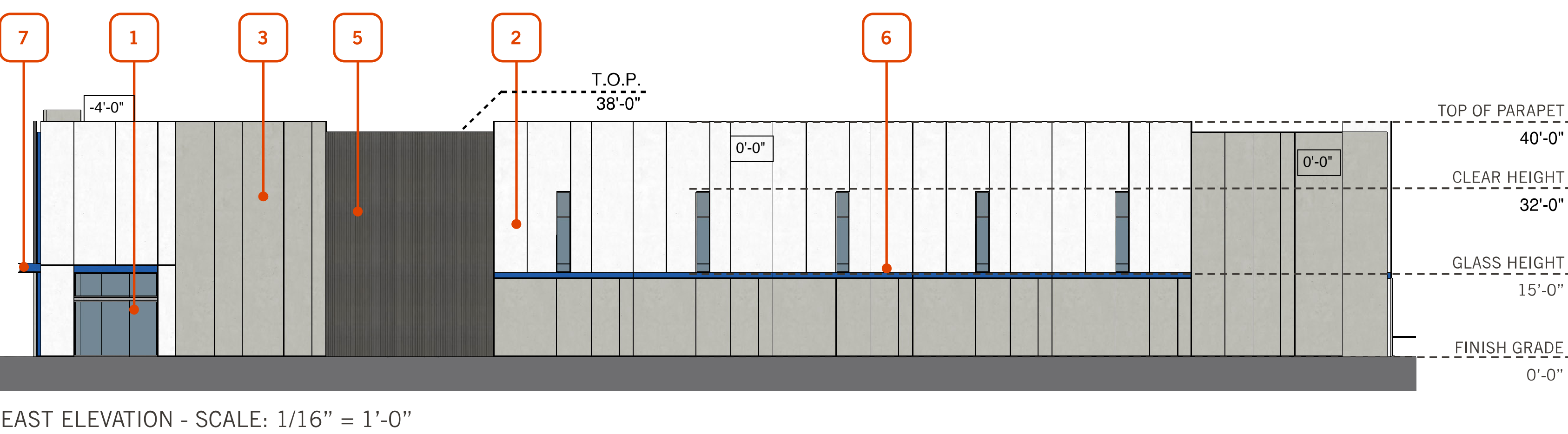
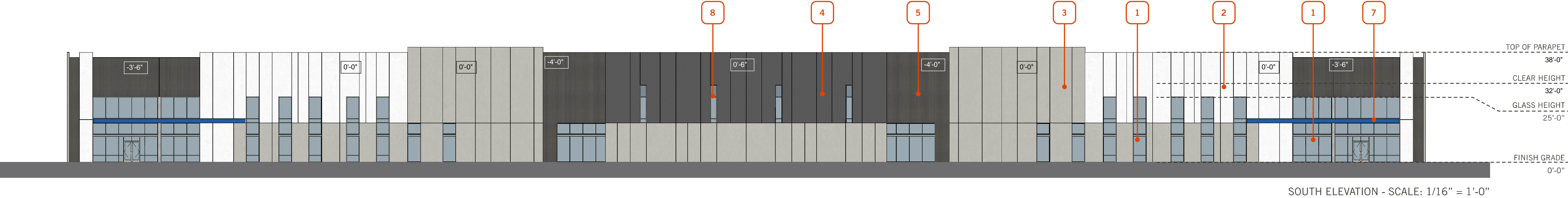
BUILDING 2 EXTERIOR ELEVATIONS

PECOS GATEWAY INDUSTRIAL
MESA, ARIZONA - PHX22-0149-00

WARE MALCOMB

04.20.2022

PAGE
4



KEYNOTES

- | | | | | | |
|---|--|---|---|---|--|
| 1 | CLEAR ANODIZED ALUMINUM STOREFRONT SYSTEM W/ HIGH PERFORMANCE INSULATED GLAZING 10% MATERIAL COVERAGE | 4 | CONCRETE TILT - UP PANEL WITH REVEALS AS SHOWN, PAINTED: SHERWIN WILLIAMS: PEPPERCORN - SW 7674 21% MATERIAL COVERAGE | 7 | CHANNEL BEAM CANOPY 2% MATERIAL COVERAGE |
| 2 | CONCRETE TILT - UP PANEL WITH REVEALS AS SHOWN, PAINTED: SHERWIN WILLIAMS: EXTRA WHITE - SW 7006 25% MATERIAL COVERAGE | 5 | FORMLINER, PAINTED: SHERWIN WILLIAMS: PEPPERCORN - SW 7674 10% MATERIAL COVERAGE | 8 | CLERESTORY WINDOW 5% MATERIAL COVERAGE |
| 3 | CONCRETE TILT - UP PANEL WITH REVEALS AS SHOWN, PAINTED: SHERWIN WILLIAMS: ARGOS - SW 7065 27% MATERIAL COVERAGE | 6 | ACCENT COLOR: SHERWIN WILLIAMS: FRANK BLUE - SW 6967 2% MATERIAL COVERAGE | | |



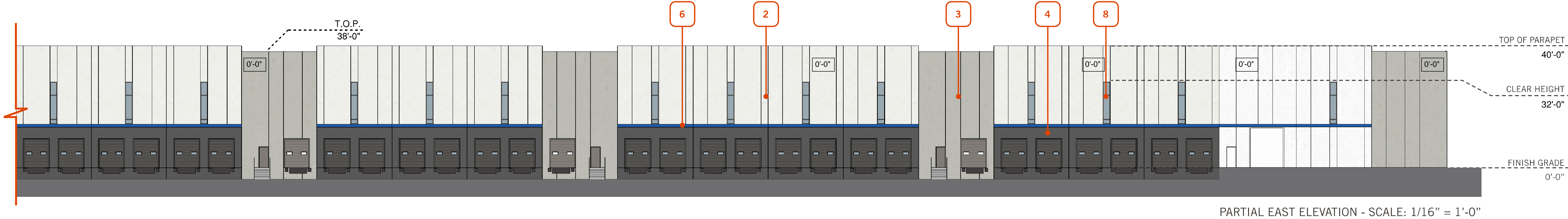
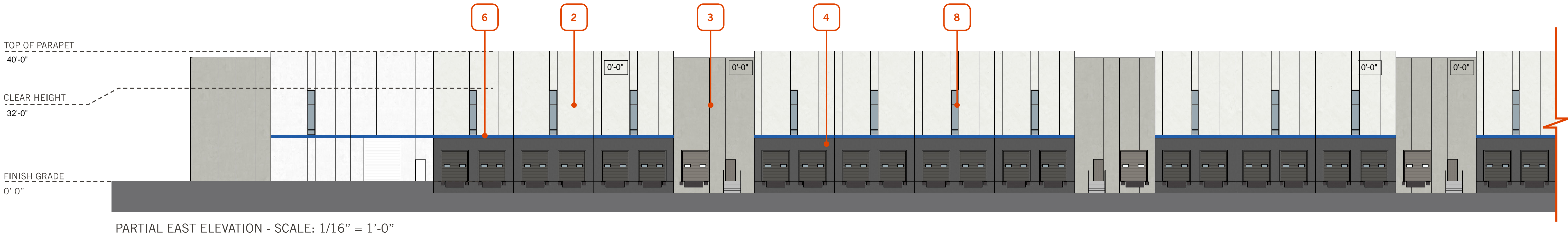
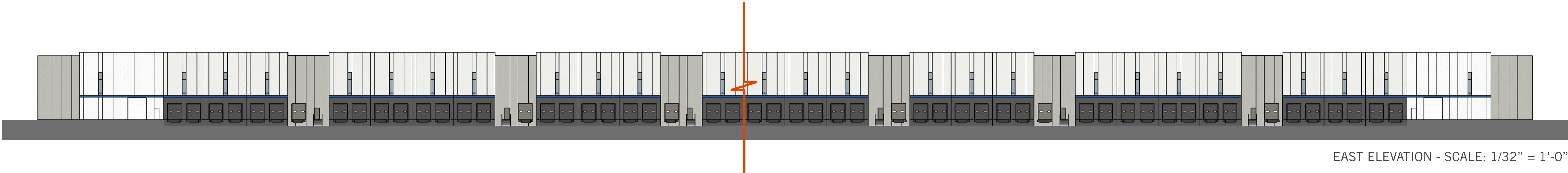
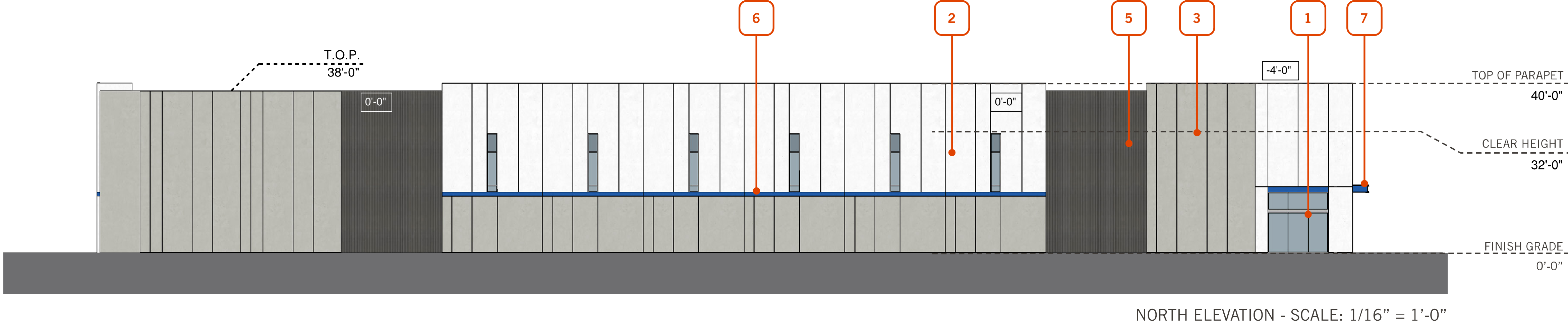
This conceptual design is based upon a preliminary review of entitlement requirements and on unverified and possibly incomplete site and/or building information, and is intended merely to assist in exploring how the project might be developed. Signage shown is for illustrative purposes only and does not necessarily reflect municipal code compliance. All colors shown are for representative purposes only. Refer to material samples for actual color verification.

BUILDING 3 EXTERIOR ELEVATIONS
PECOS GATEWAY INDUSTRIAL
MESA, ARIZONA - PHX22-0149-00

WARE MALCOMB

04.20.2022

PAGE
5



KEYNOTES

- | | | | | | |
|---|--|---|---|---|--|
| 1 | CLEAR ANODIZED ALUMINUM STOREFRONT SYSTEM W/ HIGH PERFORMANCE INSULATED GLAZING 8% MATERIAL COVERAGE | 4 | CONCRETE TILT - UP PANEL WITH REVEALS AS SHOWN, PAINTED: SHERWIN WILLIAMS: PEPPERCORN - SW 7674 27% MATERIAL COVERAGE | 7 | CHANNEL BEAM CANOPY 1% MATERIAL COVERAGE |
| 2 | CONCRETE TILT - UP PANEL WITH REVEALS AS SHOWN, PAINTED: SHERWIN WILLIAMS: EXTRA WHITE - SW 7006 29% MATERIAL COVERAGE | 5 | FORMLINER, PAINTED: SHERWIN WILLIAMS: PEPPERCORN - SW 7674 5% MATERIAL COVERAGE | 8 | CLERESTORY WINDOW 8% MATERIAL COVERAGE |
| 3 | CONCRETE TILT - UP PANEL WITH REVEALS AS SHOWN, PAINTED: SHERWIN WILLIAMS: ARGOS - SW 7065 18% MATERIAL COVERAGE | 6 | ACCENT COLOR: SHERWIN WILLIAMS: FRANK BLUE - SW 6967 4% MATERIAL COVERAGE | | |



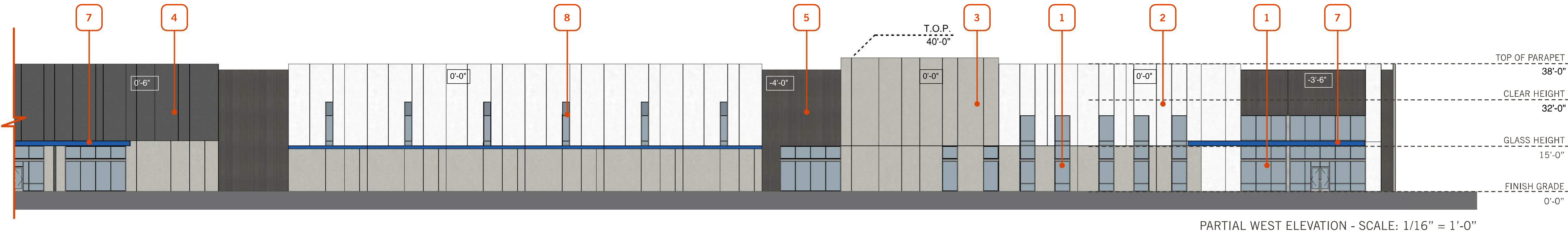
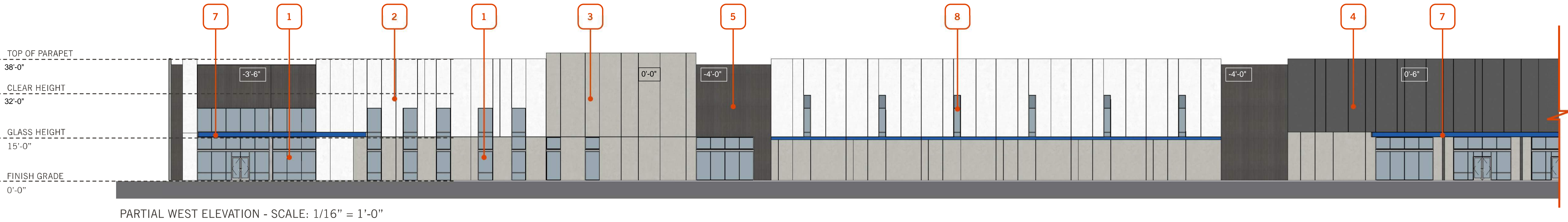
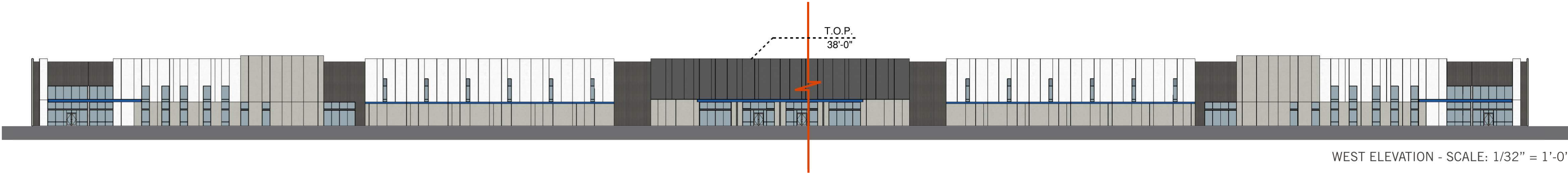
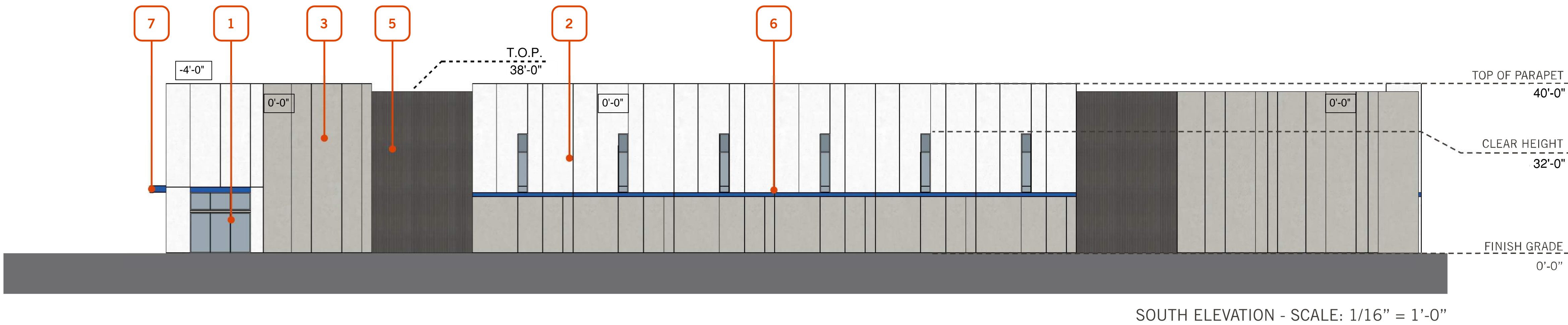
This conceptual design is based upon a preliminary review of entitlement requirements and on unverified and possibly incomplete site and/or building information, and is intended merely to assist in exploring how the project might be developed. Signage shown is for illustrative purposes only and does not necessarily reflect municipal code compliance. All colors shown are for representative purposes only. Refer to material samples for actual color verification.

BUILDING 4 EXTERIOR ELEVATIONS
PECOS GATEWAY INDUSTRIAL
MESA, ARIZONA - PHX22-0149-00

WARE MALCOMB

04.20.2022

PAGE
6



KEYNOTES

1	CLEAR ANODIZED ALUMINUM STOREFRONT SYSTEM W/ HIGH PERFORMANCE INSULATED GLAZING 8% MATERIAL COVERAGE	4	CONCRETE TILT - UP PANEL WITH REVEALS AS SHOWN, PAINTED: SHERWIN WILLIAMS: PEPPERCORN - SW 7674 27% MATERIAL COVERAGE	7	CHANNEL BEAM CANOPY 1% MATERIAL COVERAGE
2	CONCRETE TILT - UP PANEL WITH REVEALS AS SHOWN, PAINTED: SHERWIN WILLIAMS: EXTRA WHITE - SW 7006 29% MATERIAL COVERAGE	5	FORMLINER, PAINTED: SHERWIN WILLIAMS: PEPPERCORN - SW 7674 5% MATERIAL COVERAGE	8	CLERESTORY WINDOW 8% MATERIAL COVERAGE
3	CONCRETE TILT - UP PANEL WITH REVEALS AS SHOWN, PAINTED: SHERWIN WILLIAMS: ARGOS - SW 7065 18% MATERIAL COVERAGE	6	ACCENT COLOR: SHERWIN WILLIAMS: FRANK BLUE - SW 6967 4% MATERIAL COVERAGE		