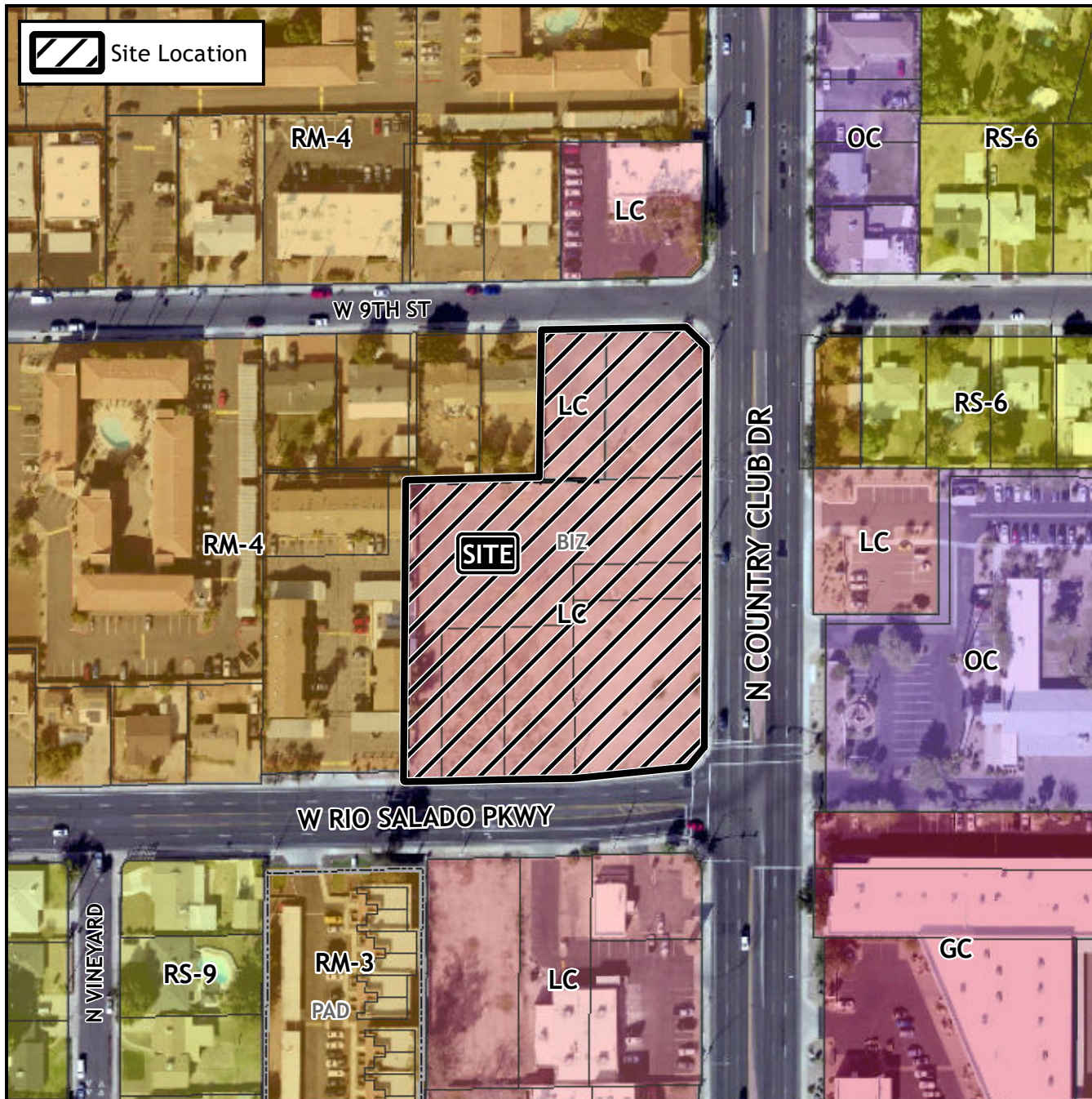


Board of Adjustment Vicinity Map: BOA22-00364



Case Details

Case:

BOA22-00364

Site / Address:

District 3. 424 West Rio Salado Parkway.
Located west of Country Club Drive on
the north side of Rio Salado Parkway.

Request:

Requesting a Special Use Permit (SUP) to
allow a Comprehensive Sign Plan (CSP)
for an office building in the Limited
Commercial zoning district with a Bonus
Intensity Zone overlay (LC-BIZ).

