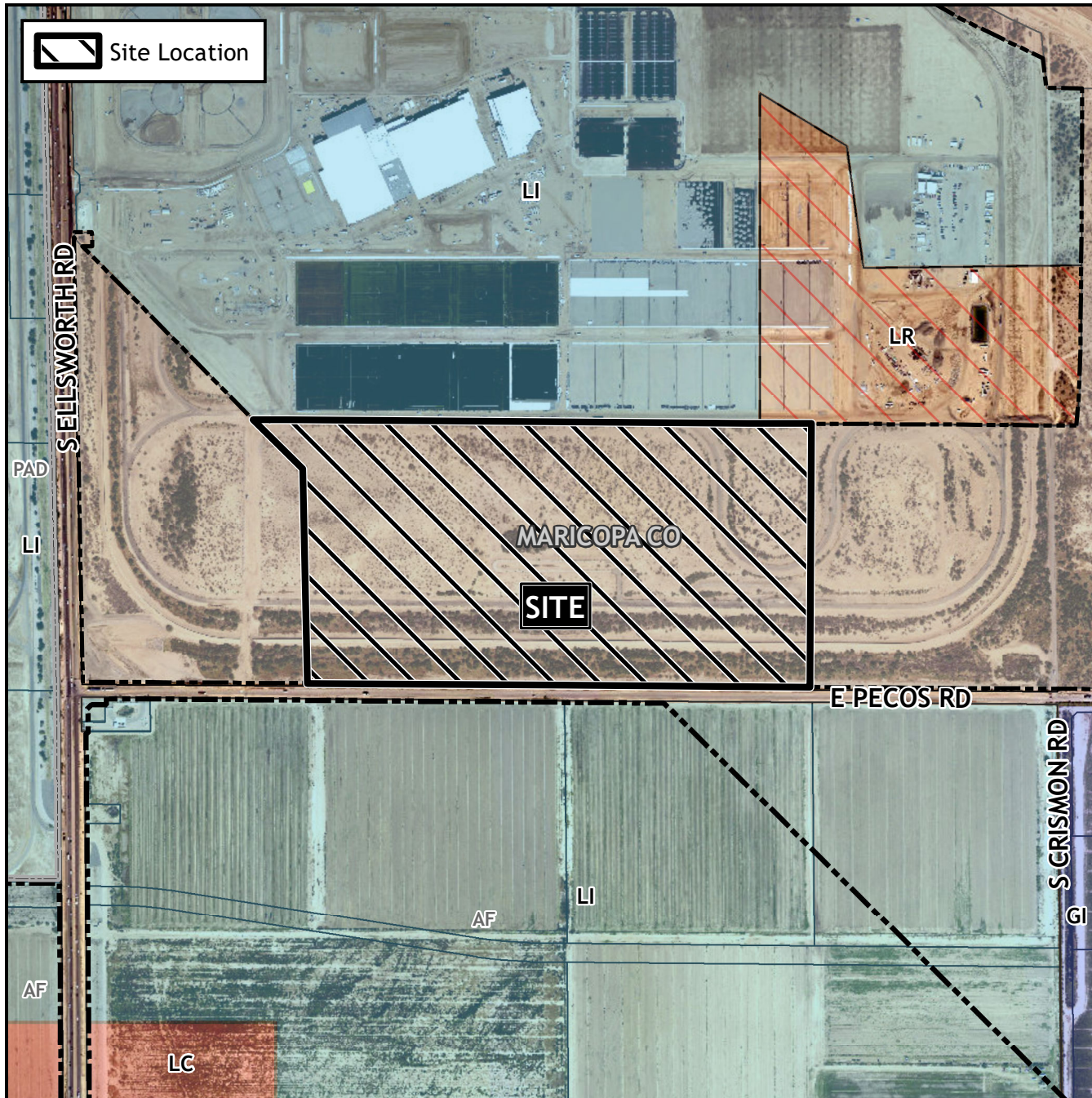


Planning and Zoning Vicinity Map: ZON22-00268



Case Details

CASE:

ZON22-00268

PRE-PLAT : ☒

SITE / ADDRESS:

District 6. Within the 9200 to 9600 blocks of East Pecos Road (north side) and the 6400 to 6800 blocks of South Ellsworth Road (east side). Located north of Pecos Road and east of Ellsworth Road. (±87 acres)

REQUEST:

Rezone from Agricultural (AG) to Light Industrial with a Planned Area Development overlay (LI-PAD) and Site Plan Review. This request will allow for an industrial development.

