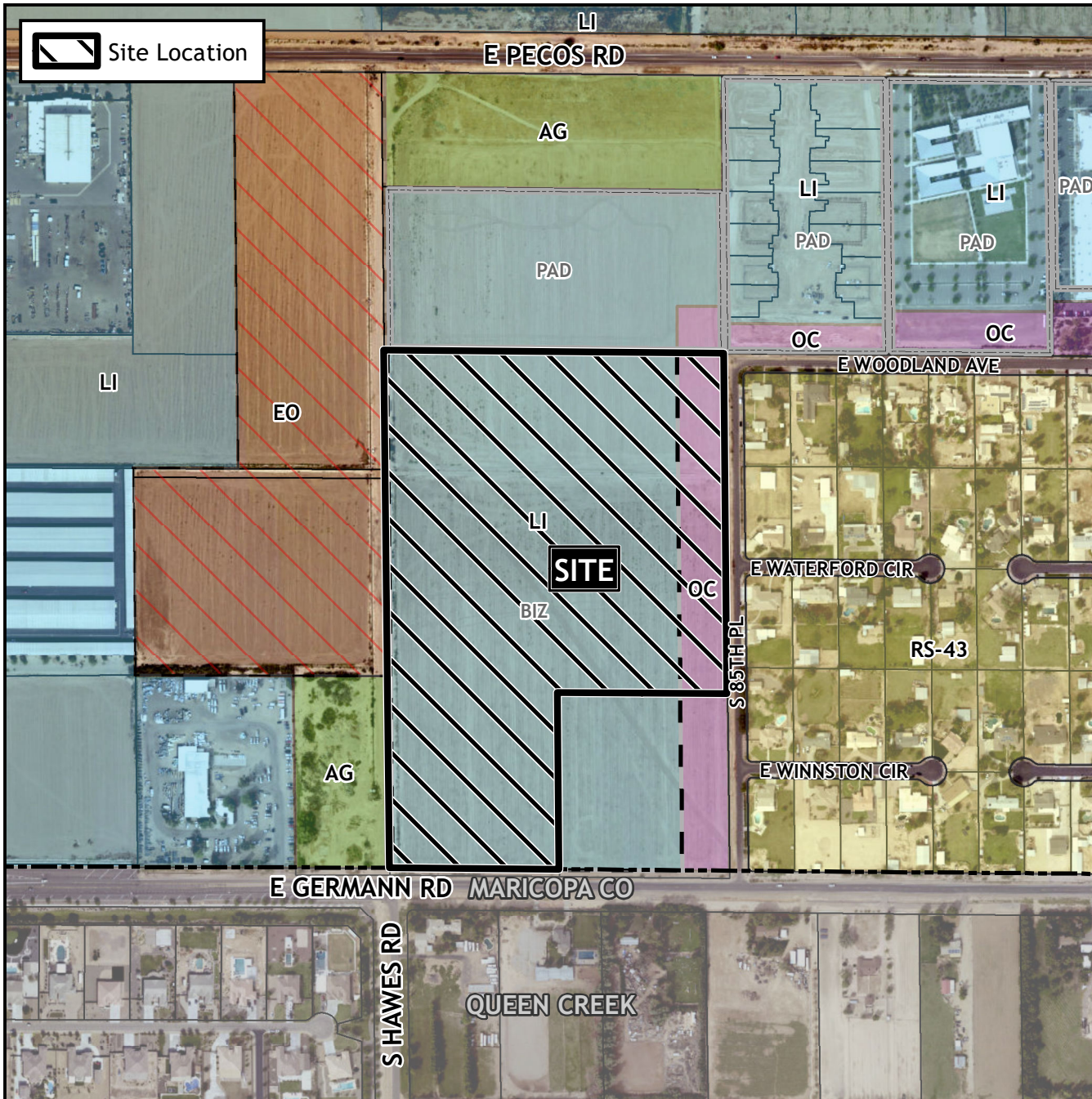


# Planning and Zoning Vicinity Map: ZON21-00792



## Case Details

**CASE:**

**PRE-PLAT :**

ZON21-00792

**SITE / ADDRESS:**

District 6. Within the 7300 to 7600 blocks of South Hawes Road (east side), the 8400 block of East Germann Road (north side) and the 7300 to 7500 blocks of South 85th Place (west side). Located north of Germann Road and east of Hawes Road. (34± acres).

**REQUEST:**

Rezone from Light Industrial with a Bonus Intensity Zone overlay (LI-BIZ) and Office Commercial with a Bonus Intensity Zone overlay (OC-BIZ) to Light Industrial with a Planned Area Development overlay (LI-PAD) and Office Commercial with a Planned Area Development overlay (OC-PAD) and Site Plan Review. This request will allow for an industrial development.

