

1 NORTH ELEVATION
SCALE: 1/8"=1'-0"



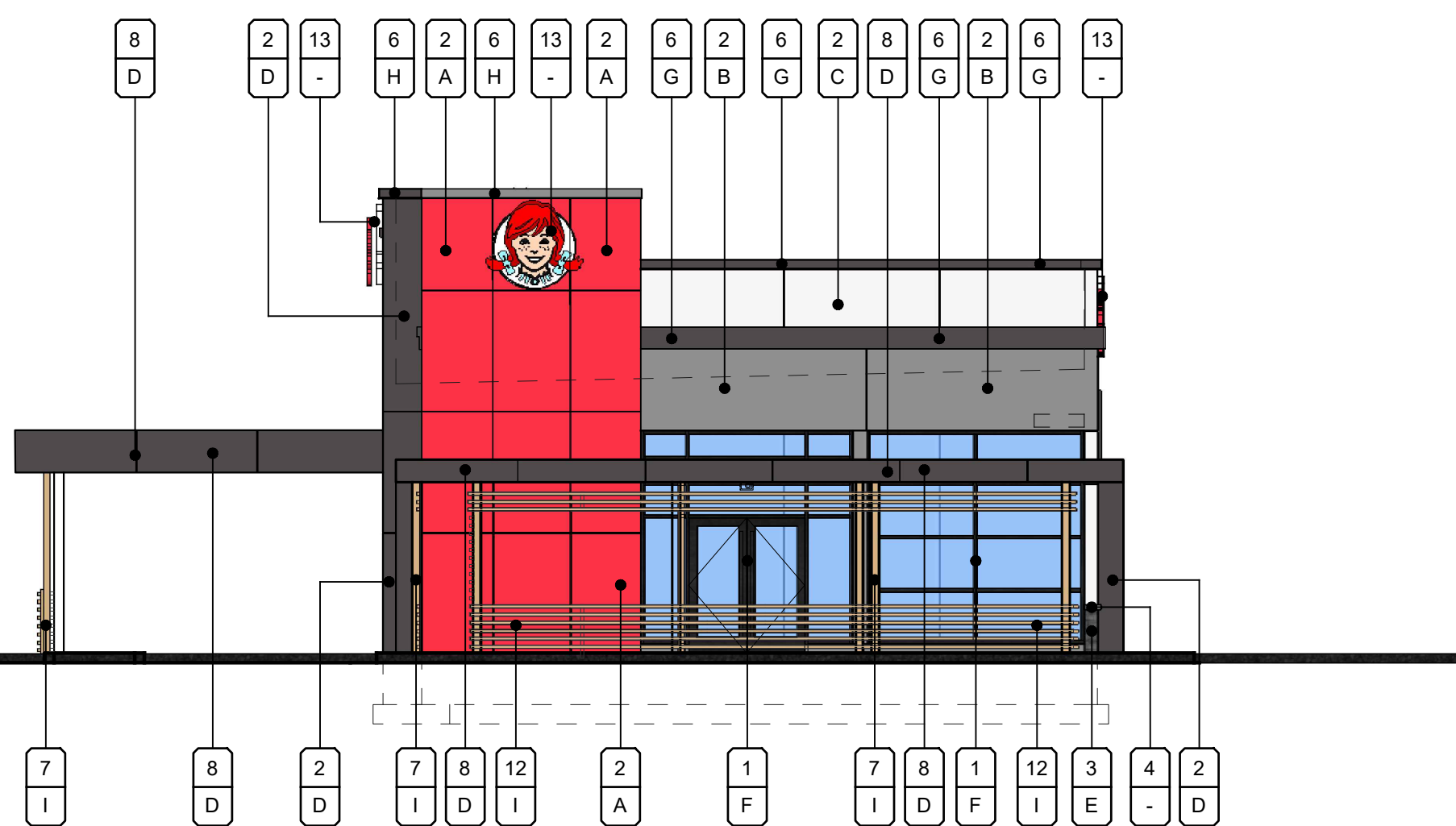
2 WEST ELEVATION
SCALE: 1/8"=1'-0"

MATERIAL/COLOR SCHEDULE

- MATERIALS**
1. ANODIZED ALUMINUM STOREFRONT WITH 1" INSULATED LOW E GLAZING
 2. 1" E.I.F.S. SYSTEM - PAINTED
 3. BRICK STONE VENEER
 4. PRE-CAST CONCRETE CAP - STANDARD GRAY
 5. PAINTED HOLLOW METAL DOOR
 6. METAL CAP FLASHING - PAINTED
 7. STEEL COLUMN - PAINTED
 8. STEEL CANOPY - PAINTED
 9. DECORATIVE EXTERIOR WALL MOUNTED LIGHT FIXTURE
 10. 6" BOLLARD SLEEVE - YELLOW PAINT
 11. ANODIZED ALUMINUM WINDOWS SYSTEM INSULATED LOW E GLAZING
 12. REFINISHED ALUMINUM SIDING MATERIAL
 13. FLUSH-MOUNT WENDY'S SIGNAGE PROVIDED BY SIGN SUPPLIER.

MATERIAL/COLOR SCHEDULE

- COLORS**
- by Sto Corp. (or Equal):
A. #NA13-0040 'WENDY'S RED'
B. #NA13-0042 'LIGHT GRAY'
- by Oldcastle Building Envelope (or Equal):
F. "DARK BRONZE" ANODIZED ALUMINUM
- by Dunn Edwards. (or Equal):
C. DEW 394 - "CASCADING WHITE"
D. DET 619 - "CELLULOID"
- by Exceptional Metals (or Equal):
G. "SILVER METALLIC"
H. "TUNDRA"
- by Coronado Stone (or Equal):
E. PLAYA VISTA LIMESTONE - "BLACK FOREST"
- by Knotwood (or Equal):
I. "LIGHT OAK"
- | MATERIAL | # |
|----------|---|
| FINISH | X |



3 SOUTH ELEVATION
SCALE: 1/8"=1'-0"



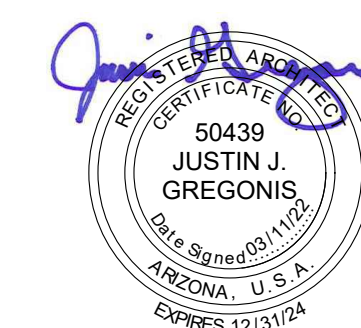
4 EAST ELEVATION
SCALE: 1/8"=1'-0"

MATERIAL PERCENTAGES

NORTH ELEVATION MATERIALS S.F.		
OVERALL	1,571 S.F.	
E.I.F.S.	707 S.F.	45%
BRICK	283 S.F.	18%
METAL	405 S.F.	26%
STOREFRONT	176 S.F.	11%
-	-	-
SOUTH ELEVATION MATERIALS S.F.		
OVERALL	1,575 S.F.	
E.I.F.S.	515 S.F.	33%
BRICK	248 S.F.	16%
METAL	402 S.F.	26%
STOREFRONT	254 S.F.	16%
GRAPHICS PANEL	156 S.F.	9%
-	-	-
WEST ELEVATION MATERIALS S.F.		
OVERALL	833 S.F.	
E.I.F.S.	225 S.F.	27%
BRICK	12 S.F.	1%
METAL	410 S.F.	49%
STOREFRONT	186 S.F.	23%
-	-	-
EAST ELEVATION MATERIALS S.F.		
OVERALL	838 S.F.	
E.I.F.S.	412 S.F.	49%
BRICK	203 S.F.	24%
METAL	213 S.F.	26%
STOREFRONT	10 S.F.	1%
-	-	-



WENDY'S MESA
SWC Ellsworth Rd & University Dr
Mesa, Arizona 85207
03.11.2022
PROJECT: 21047



UPWARD
ARCHITECTS

1155 W. Rio Salado Parkway, Suite B-101, Tempe, AZ 85281
602.753.5222 www.upwardarchitects.com