



DESIGN REVIEW BOARD

June 14, 2022



DRB22-00400



Request

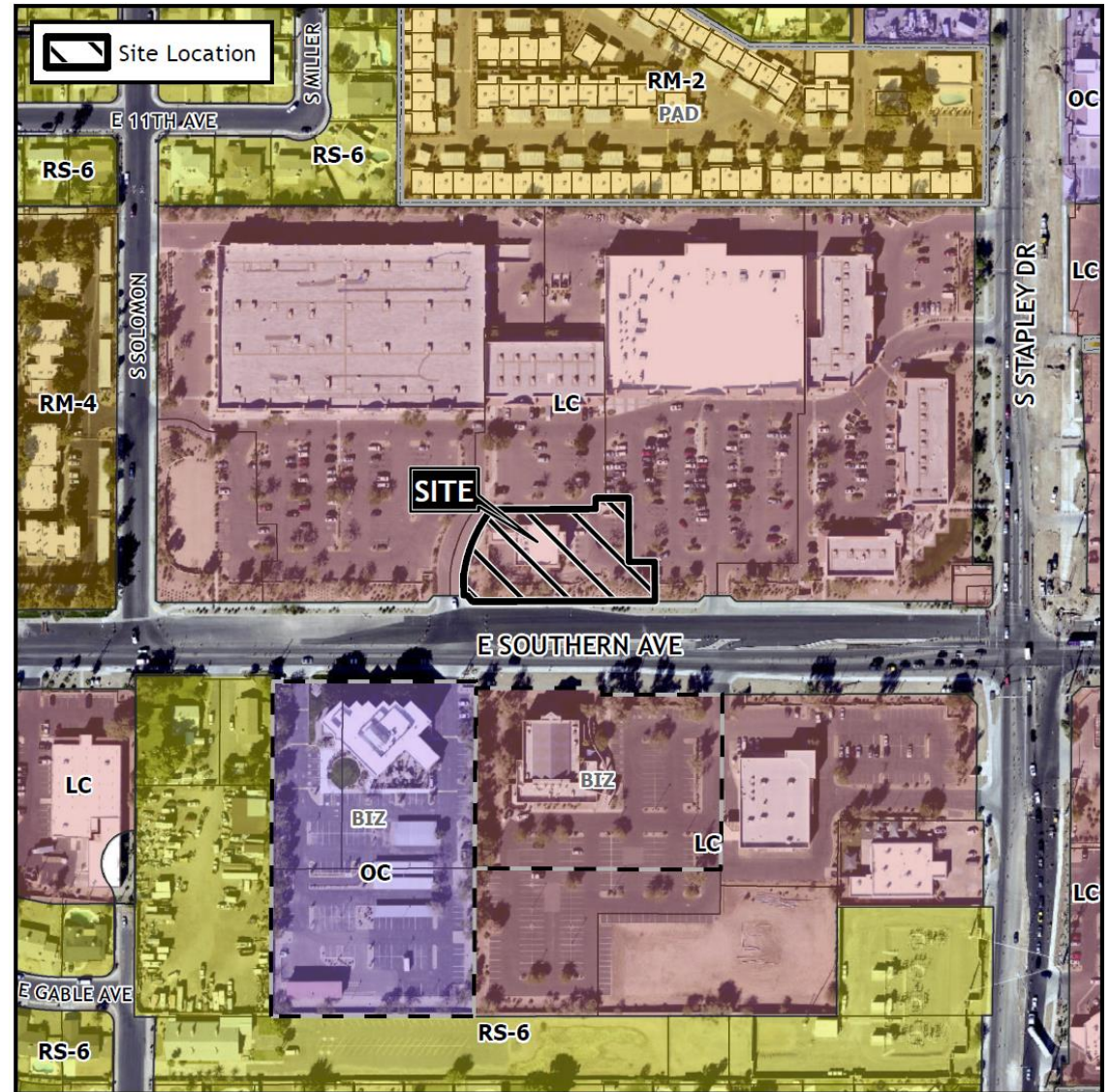
- Design Review

Purpose

- Restaurant with a drive thru

Location

- West of Stapley Drive
- On the north side of Southern Avenue.



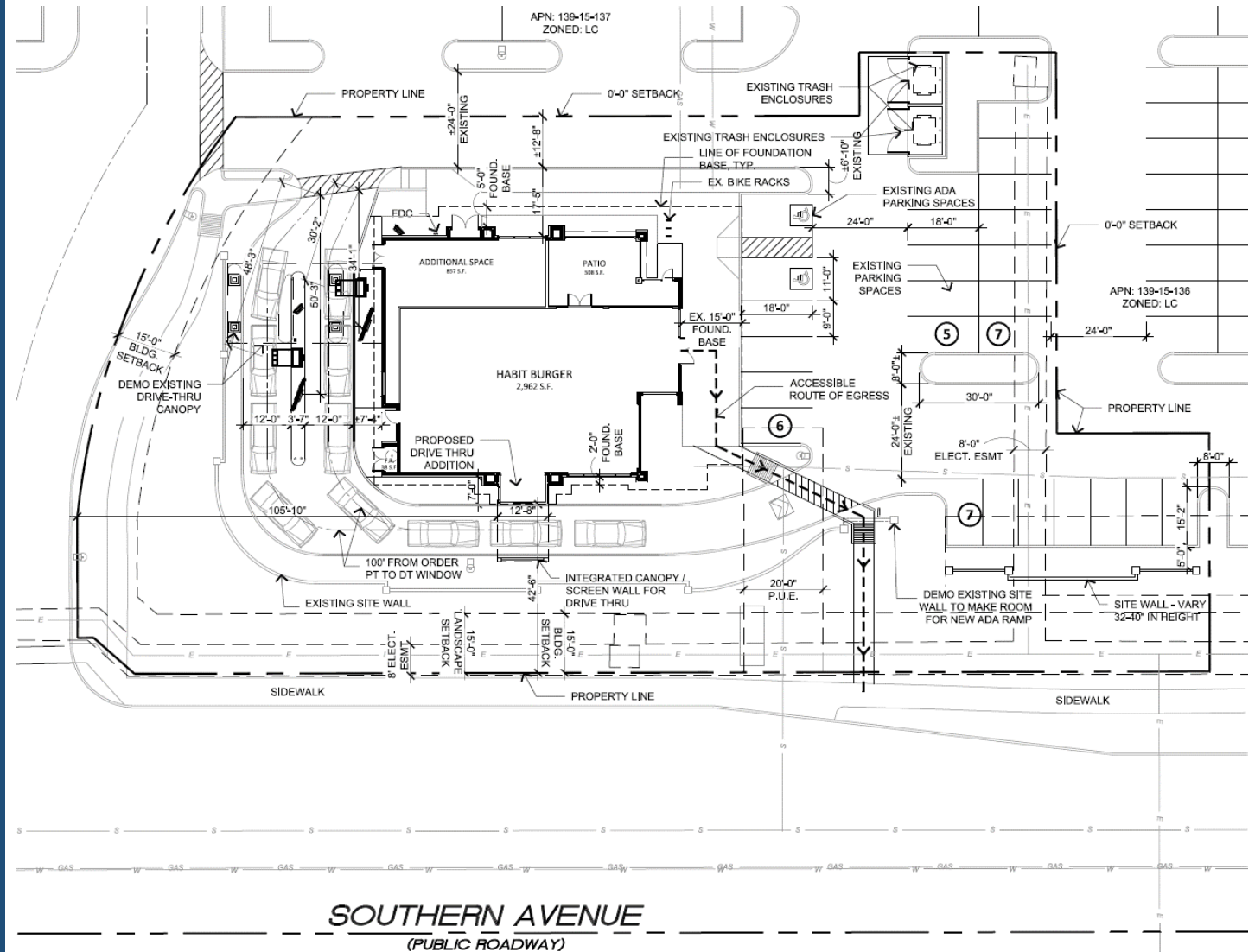
Site Photo



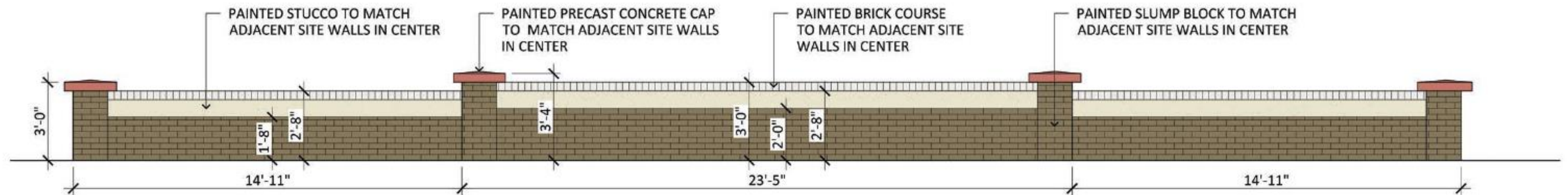
Looking northwest from Southern Ave

Site Plan

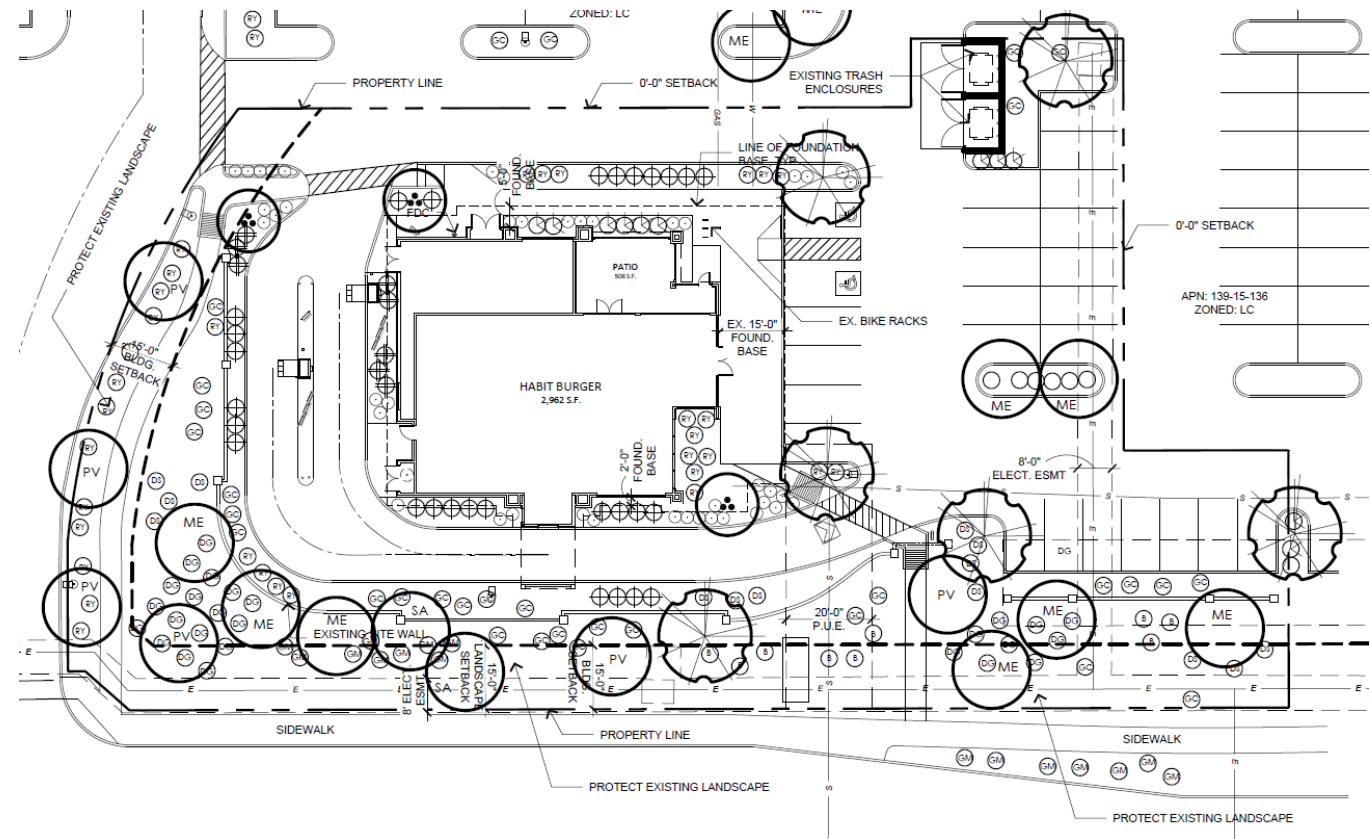
- Former bank
- Use changing to a restaurant with a drive thru
- New outdoor patio
- Adding new pedestrian connections



Site Details



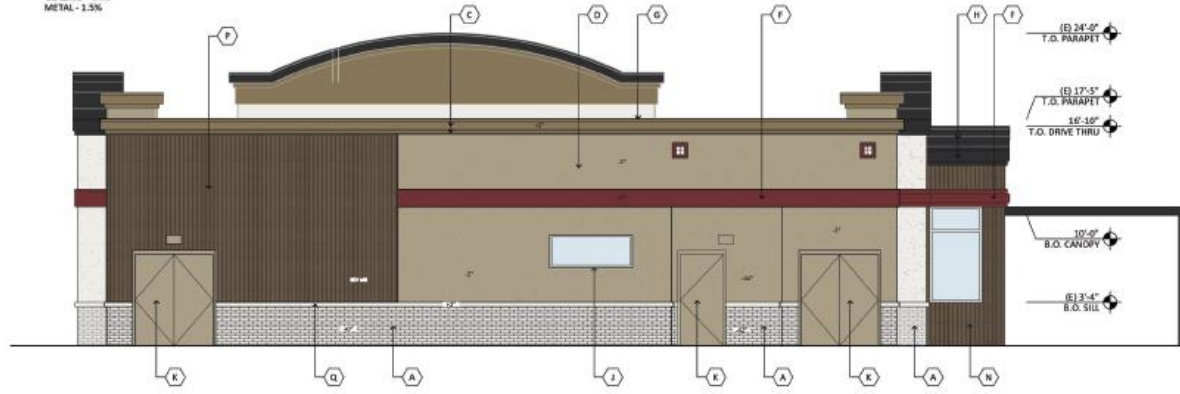
- New additional landscaping being added to the site along the perimeter, interior, and along the foundation base.



Elevations

MATERIAL PERCENTAGES

STUCCO - 49.8%
COMPOSITE WOOD - 30.1%
BRICK - 14.4%
GLAZING - 4.4%
METAL - 1.5%



WEST ELEVATION

SCALE: 3/16" = 1'-0"

MATERIAL PERCENTAGES

STUCCO - 48.7%
COMPOSITE WOOD - 6.4%
BRICK - 12.8%
GLAZING - 25.8%
METAL - 6.3%



NORTH ELEVATION

SCALE: 3/16" = 1'-0"

Elevations

MATERIAL PERCENTAGES

STUCCO - 38.2%
COMPOSITE WOOD - 6.6%
BRICK - 19.0%
GLAZING - 30.2%
METAL - 4.4%



EAST ELEVATION

SCALE: 3/16" = 1'-0"

MATERIAL PERCENTAGES

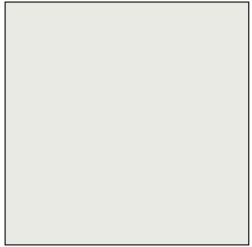
STUCCO - 46.4%
COMPOSITE WOOD - 17.2%
BRICK - 17.6%
GLAZING - 15.2%
METAL - 3.5%



SOUTH ELEVATION

SCALE: 3/16" = 1'-0"

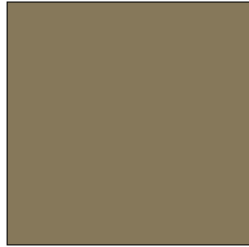
Material Board



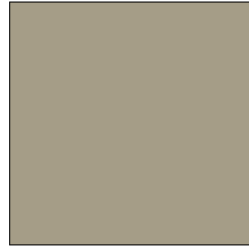
PAINTED BRICK
SHERWIN WILLIAMS
SW7004 "SNOWBOUND"



PAINTED STUCCO CORNICE
SHERWIN WILLIAMS
SW6258 "TRICORN BLACK"



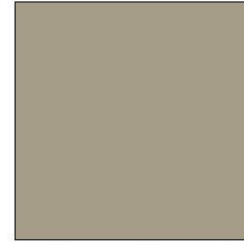
PAINTED STUCCO CORNICE
SHERWIN WILLIAMS
SW9114 "FALLEN LEAVES"



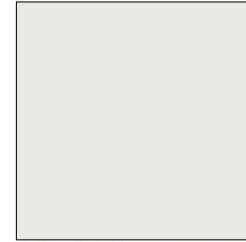
PAINTED STUCCO
SHERWIN WILLIAMS
SW7549 "STUDIO TAUPE"



EXISTING MULLIONS
KAWNEER ALUMINUM
CLEAR ANODIZED



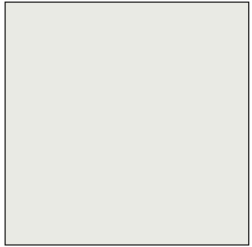
PAINTED HOLLOW METAL DOORS
SHERWIN WILLIAMS
SW7549 "STUDIO TAUPE"



PAINTED TILE
SHERWIN WILLIAMS
SW7004 "SNOWBOUND"



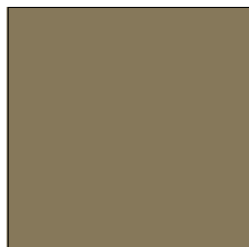
COMPOSITE WOOD
RESYSTA
DARK SIAM



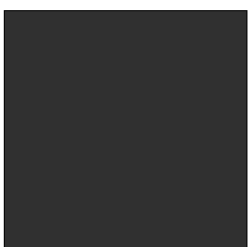
PAINTED STUCCO
SHERWIN WILLIAMS
SW7004 "SNOWBOUND"



PAINTED STUCCO / FASCIA
SHERWIN WILLIAMS
SW7586 "STOLEN KISS"



PAINTED PARAPET CAP
SHERWIN WILLIAMS
SW9114 "FALLEN LEAVES"



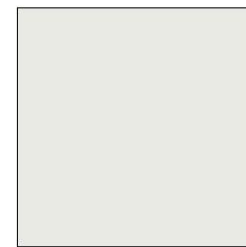
PAINTED METAL & PARAPET CAP
SHERWIN WILLIAMS
SW6258 "TRICORN BLACK"



EXISTING CLAY ROOF TILE
PATCH AND REPAIR AS NEEDED



METAL & CABLE RAILING
STAINLESS CABLE & RAILING
BLACK
 $\frac{3}{16}$ " DIA. CABLE RAILING ALUMINUM



BASE BAND
SHERWIN WILLIAMS
SW7004 "SNOWBOUND"

Renderings



(13



ALLEGRO W DIA LED

Ambiental Outdoor

TYPICAL SIZE **SD**

FINISHES AND COLOURS

COLOUR CHART

ITEM

DESCRIPTION

FEATURES

- Aluminium Housing w/ Textured Black Polyester Powder Coat Finish
- Aluminium End Caps w/ Ten Bars w/ Textured Black Polyester Powder Coat Finish
- Aluminium Mounting Pairs w/ Reflective White Powder Coat Finish
- Luminous White Acrylic Wave Array Diffuser
- Luminous White Acrylic Top and Bottom Lens Panels
- Mounts Over 4" Junction Box w/ Easy Hang-Up Mounting Plate Included
- Operating Temperature Range for 0°F to 104°F -10°C
- CSA Approved for Wet Location for Vertical Mounting
- LED Light Fixture
- Hanging Hardware Included

LINE DRAWING

The diagram shows a side view of the light fixture. Key dimensions include:

- Overall Height:** 12 1/2"
- Top Section Height:** 6"
- Bottom Section Height:** 6 1/2"
- Mounting Arm Length:** 12"
- End Cap Width:** 12"

Labels indicate the following parts:

- HOUSING** (top section)
- END CAP** (left and right sections)
- MOUNTING ARM** (bottom section)

FINISHES

Coastal Ocean	Marine Blue	Storm Grey	Matte Black	Sand	Nautical Steel
Weathered Steel	White Metallic	Vintage Copper			

For Full Color
Chart &
Custom
Colors Contact
Tenneco
Lighting Inc.

TU
TECHNOLOGICAL UNIVERSITY OF CALIFORNIA

DESIGN CENTER FOR
INTEGRATED ARCHITECTURE AT TUCS

DAY HEROLD
ENGINEERS

www.tucsd.edu

Design Guidelines

Section 11-7-3

- | | |
|---|---|
| ✓ | Design provides architectural interest along the roofline |
| ✓ | Exterior walls are subdivided using projections, overhangs and recesses |
| ✓ | Entrances are clearly defined, shaded and inviting |
| ✓ | Incorporates three different and distinct materials |

Summary

Findings

Staff is seeking your review and recommendation on the following:

- Staff welcomes any feedback



DRB22-00400