



# DESIGN REVIEW BOARD

June 14, 2022



**DRB22-00158**

Charlotte Bridges, Planner II

June 14, 2022



## Request

---

- Design Review

## Purpose

---

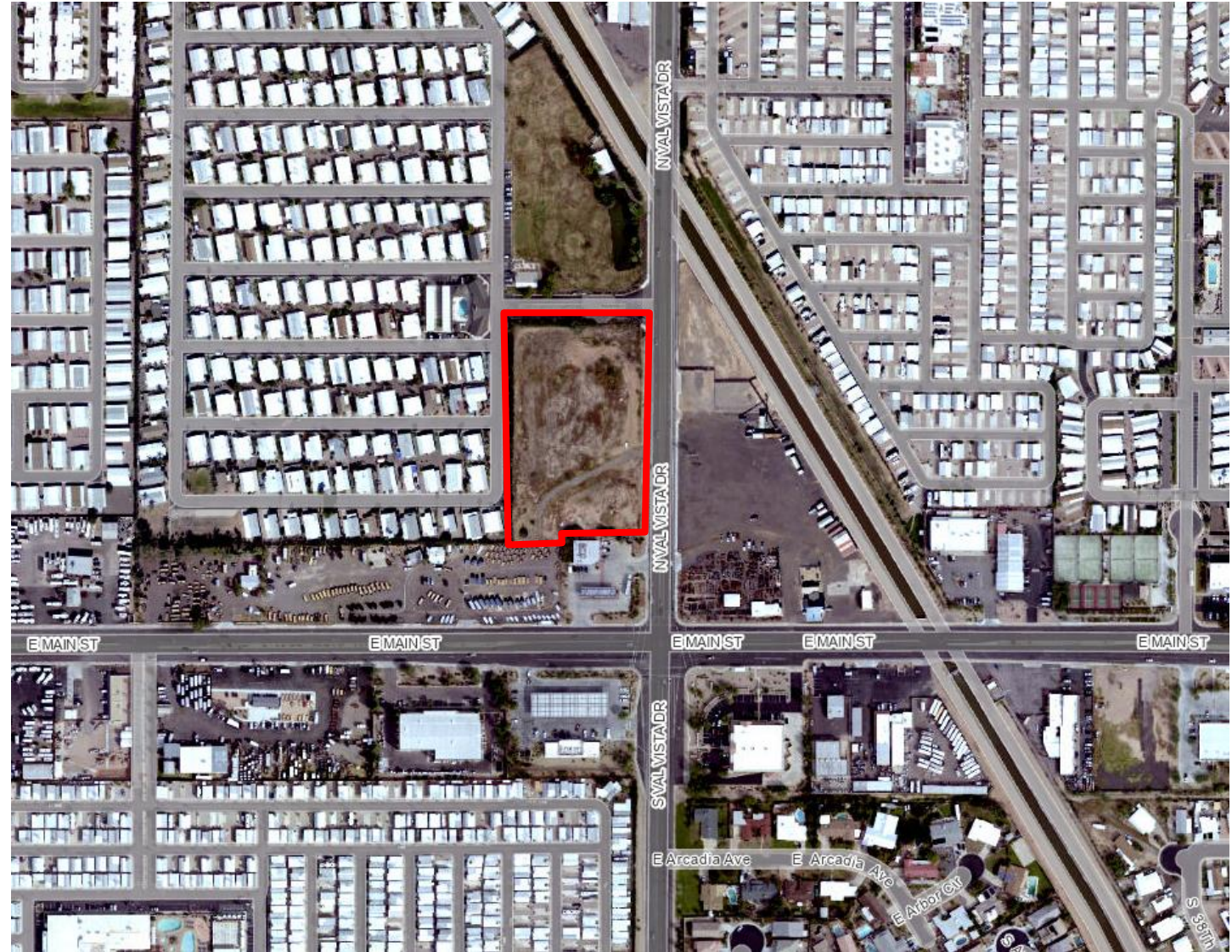
- To allow for a self-storage facility with RV and boat storage



# Location

---

- North of Main Street
- West side of Val Vista Drive





# Site Photos

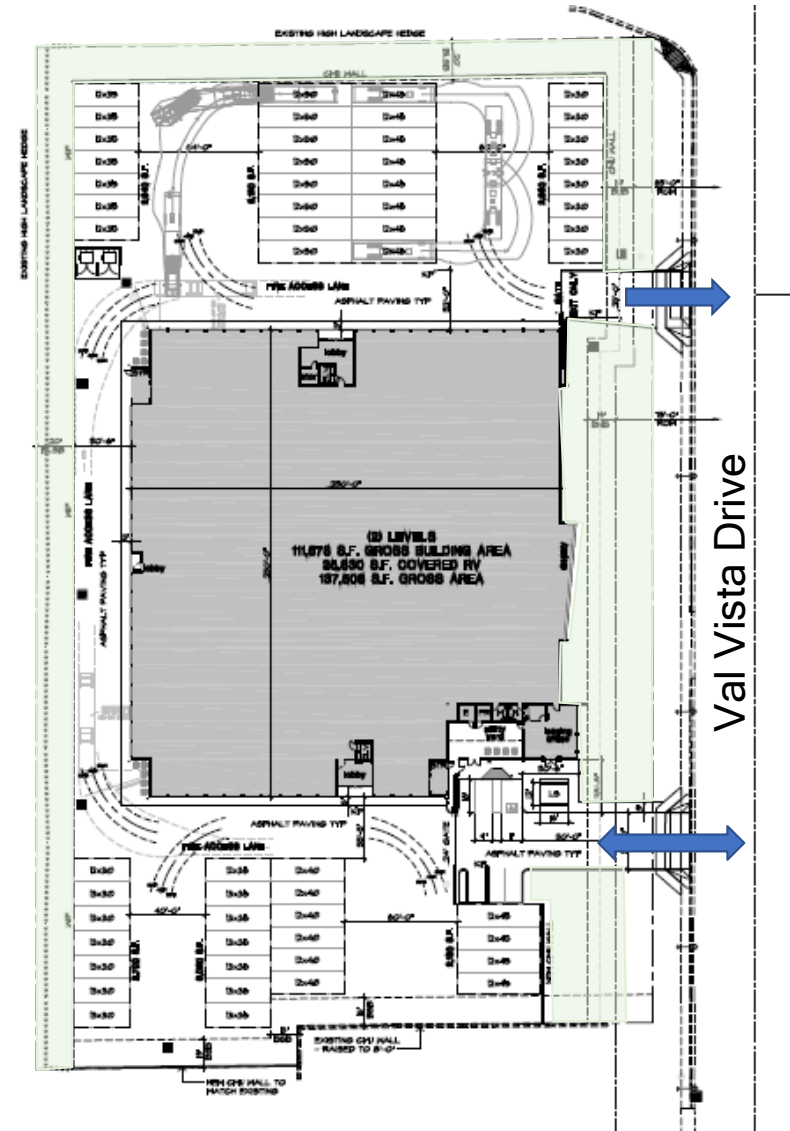


Looking southwest towards the site

# Site Plan

- Two-story,
- 111,678 sq. ft. building
- 28,830 sq. ft. covered RV and boat storage
- Two access points

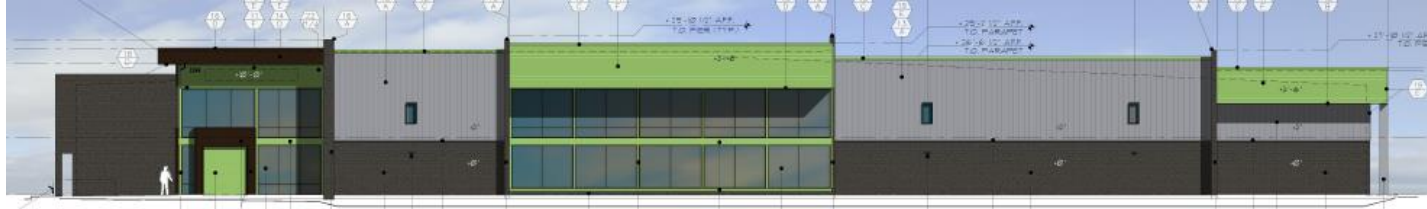
6





# Elevations

## East Elevation



**EAST SIDE MATERIAL PERCENTAGES**  
TOTAL AREA 6,941 S.F.

- ACCENT BAND CMU - 548 S.F. - 7.89%
- CMU - 1,409 S.F. - 20.31%
- SCORED CMU 90 S.F. - 1.3%
- BOX RIB PANEL - 856 S.F. - 12%
- NU-WAVE CORRUGATED PANEL - 1,937 S.F. - 28%
- FLUSH METAL PANEL - 253 S.F. - 3.6%
- METAL FASICA - 105 S.F. - 1.7%
- GLAZING - 1,540 S.F. - 22%
- EXPOSED ACCENT BEAMS - 107 S.F. - 1.5%
- METAL COPING 118 S.F. - 1.7%

## South Elevation



**SOUTH SIDE MATERIAL PERCENTAGES**  
TOTAL AREA 6,063 s.f.

- ACCENT BAND CMU - 370 S.F. - 6%
- CMU - 1,116 S.F. - 18.4%
- BOX RIB PANEL - 1,031 S.F. - 17%
- NU-WAVE CORRUGATED PANEL - 1,143 S.F. - 18.8%
- JANUS STEEL DOORS 871 S.F. - 14.3%
- FLUSH METAL PANEL - 314 S.F. - 5%
- GLAZING - 875 S.F. - 14.4%
- EXPOSED ACCENT BEAMS - 83 S.F. - 1.3%
- METAL COPING 260 S.F. - 4.2%

## West Elevation



**WEST SIDE MATERIAL PERCENTAGES**  
TOTAL AREA 7,187 S.F.

- ACCENT BAND CMU - 657 S.F. - 9%
- CMU - 1,194 S.F. - 16.6%
- BOX RIB PANEL - 1,492 S.F. - 20%
- NU-WAVE CORRUGATED PANEL - 2,374 S.F. - 33%
- JANUS STEEL DOORS - 1,170 S.F. - 16.2%
- METAL COPING 118 S.F. - 1.7%
- METAL SHROUD WINDOWS - 182 S.F. - 2%

## North Elevation

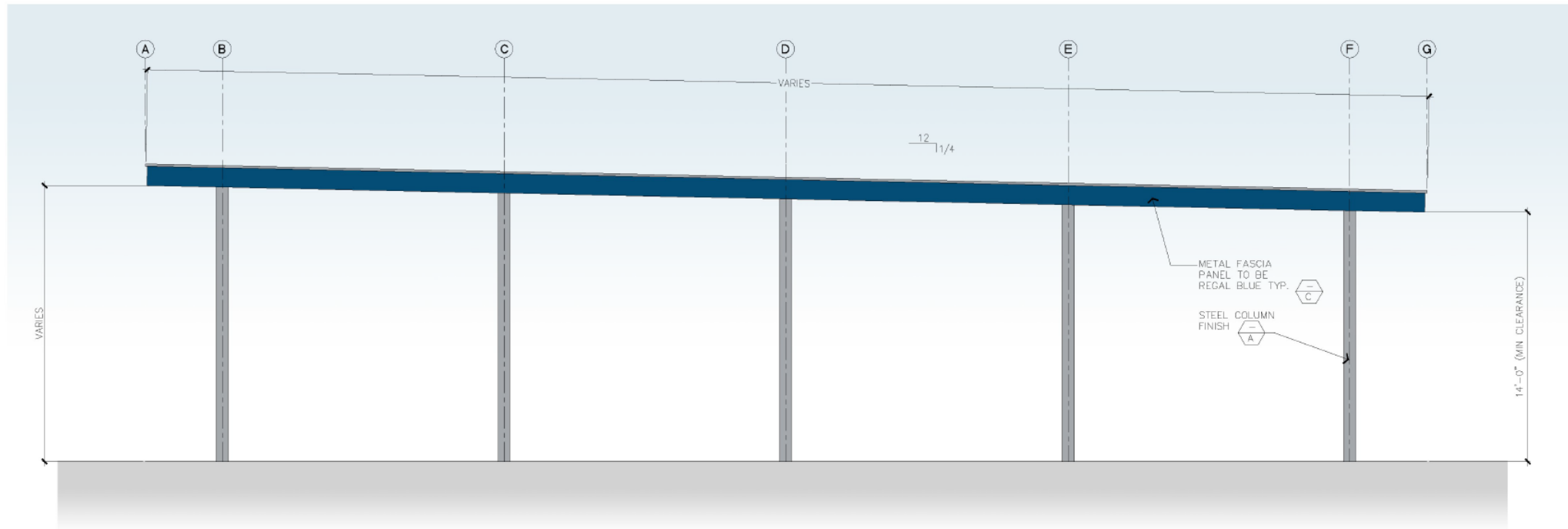


**NORTH SIDE MATERIAL PERCENTAGES**  
TOTAL AREA 5,361 S.F.

- ACCENT BAND CMU - 385 S.F. - 7%
- CMU - 1,027 S.F. - 19%
- SCORED CMU - 88 S.F. - 1.6%
- BOX RIB PANEL - 992 S.F. - 18.5%
- NU-WAVE CORRUGATED PANEL - 1,467 S.F. - 27.3%
- JANUS STEEL DOORS - 1,280 S.F. - 23.8%
- METAL COPING 90 S.F. - 1.6%
- METAL SHROUD WINDOWS - 32 S.F. - .6%



# Elevations



CANOPY ELEVATION

SCALE: 1/4" = 1'-0"

# Renderings



# Renderings





# Renderings



# Renderings



# Colors and Materials



**AEP SPAN  
ZINCALUME PLUS**



**JANUS INTERNATIONAL  
EXR WASABI**



**ECHELON  
BLACK CANYON**



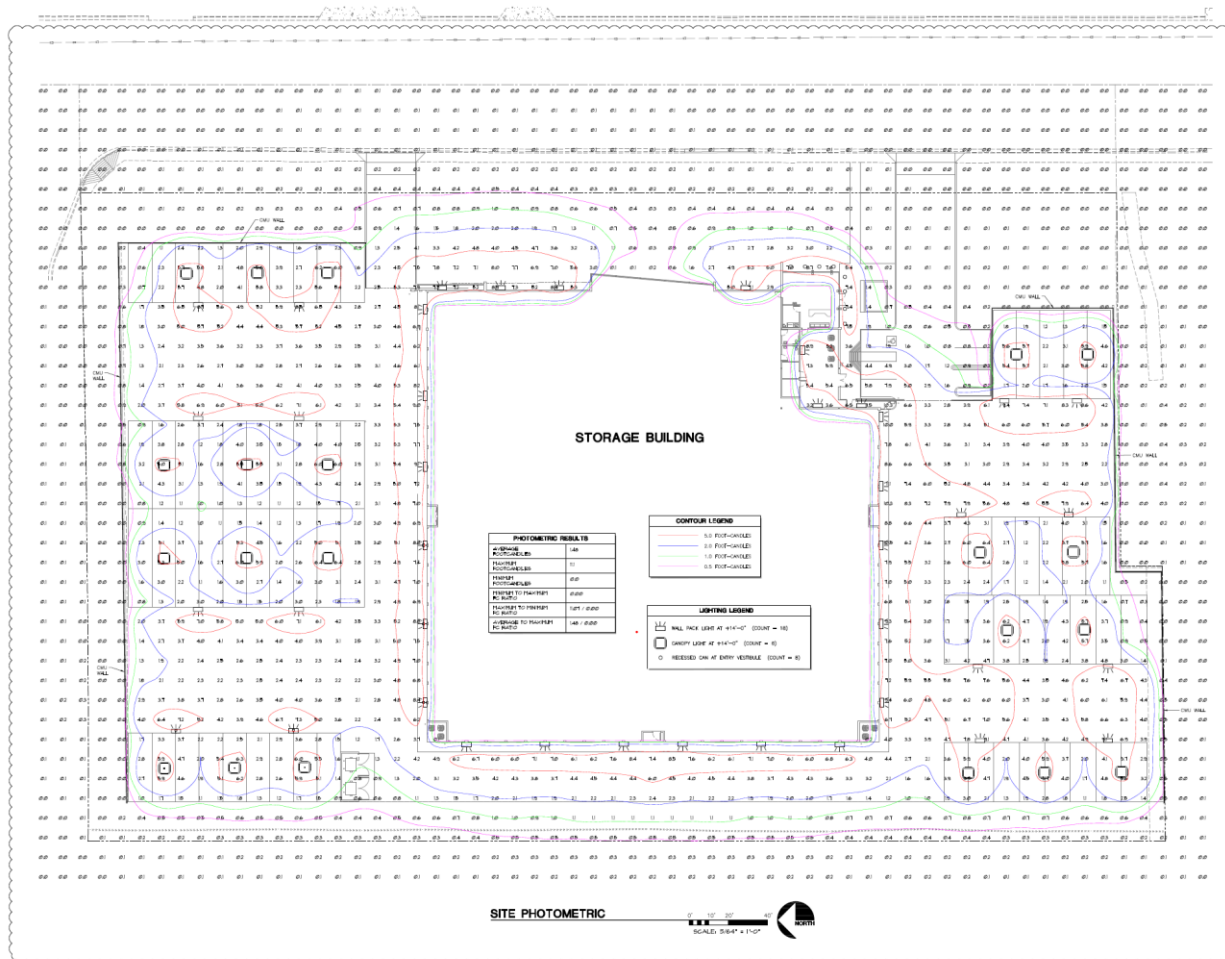
**AEP SPAN  
DARK BRONZE**



**DUNN EDWARDS  
VIN-L-STRIPE YELLOW**



# Lighting



# Design Guidelines

## Section 11-6-3

✓	At least three distinct materials on each façade
✓	Exterior walls are proportioned to human scale
✓	Changes in plane and texture
✓	Building height is varied
✓	Entries are framed
✓	No more than 50% of a total façade may be covered with one single material

# Summary

## Findings

Staff is seeking your review and recommendation on the following:

- ✓ Proposed building and landscape architecture





# DESIGN REVIEW BOARD

June 14, 2022