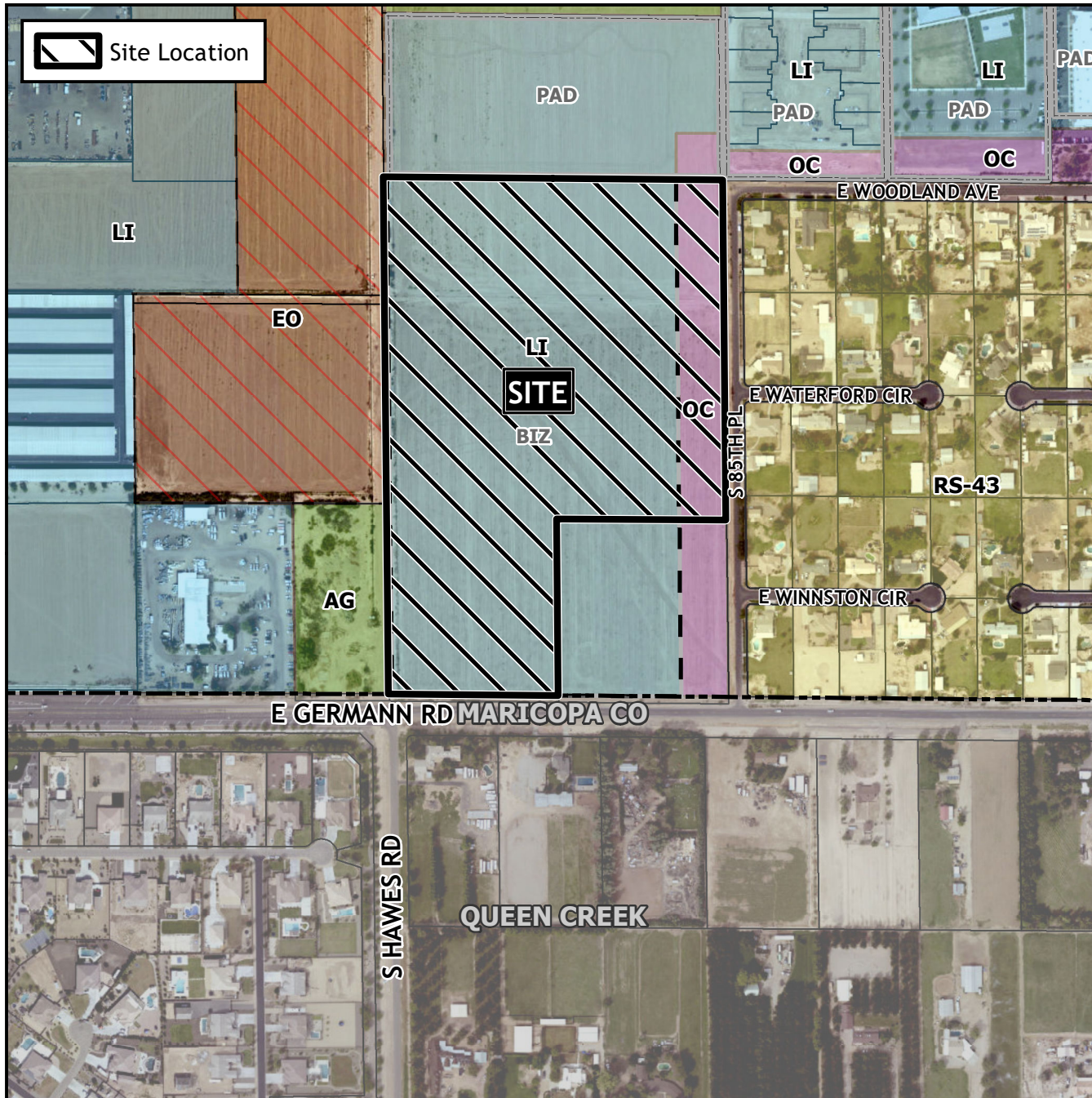


Design Review Vicinity Map: DRB21-00926



Case Details

Case:

DRB21-00926

Site / Address:

District 6. Within the 7300 to 7600 blocks of South Hawes Road (east side), the 8400 block of East Germann Road (north side) and the 7300 to 7500 blocks of South 85th Place (west side). Located north of Germann Road and east of Hawes Road. (34± acres).

Request:

Requesting the review of an industrial development

