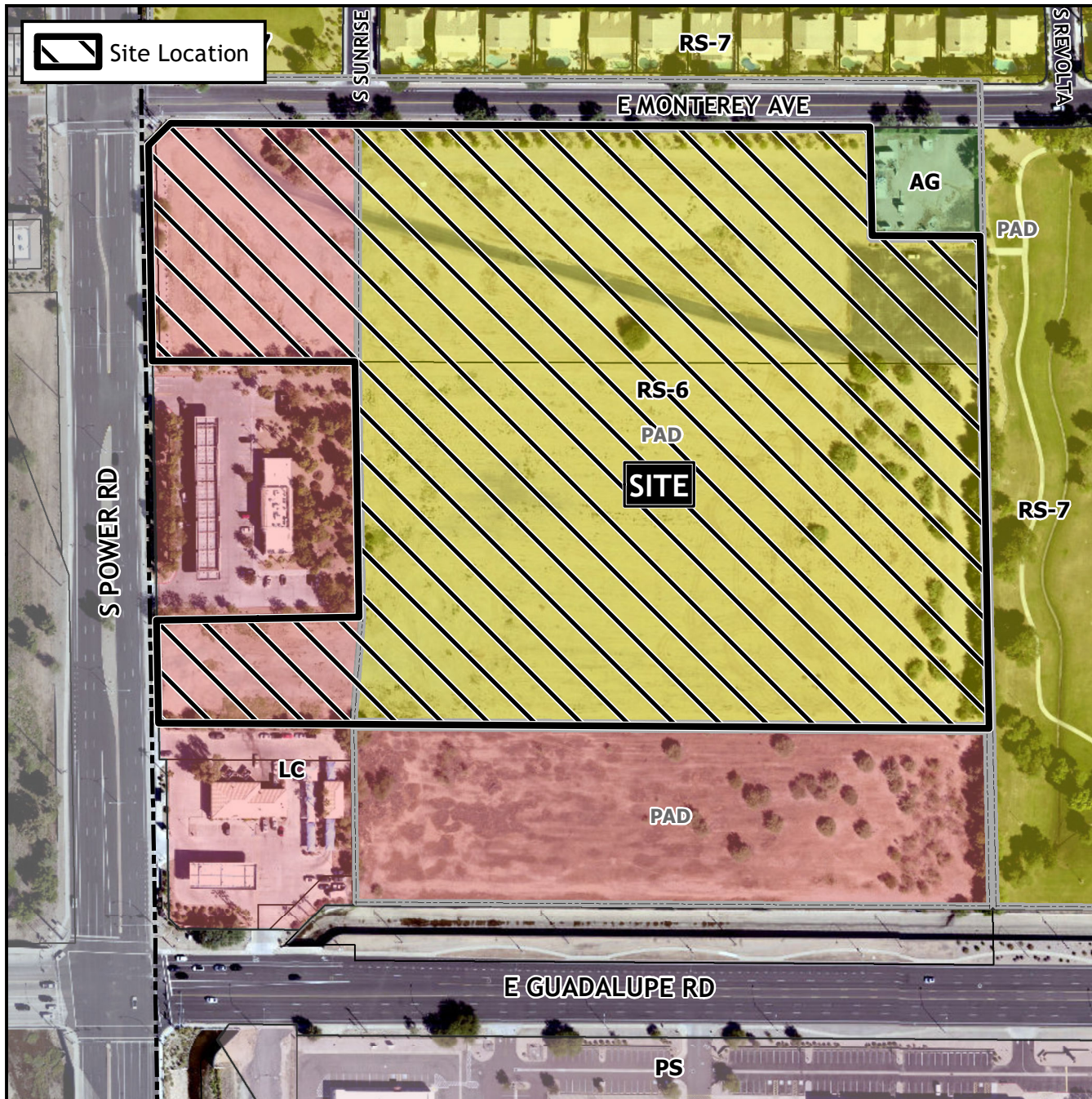


## Design Review Vicinity Map: DRB22-00489



## Case Details

### Case:

DRB22-00489

### Site / Address:

District 6. Within the 2600 to 2800 blocks of South Power Road (east side) and within the 6800 and 7000 Blocks of East Monterey Avenue (south side). Located north of Guadalupe Road on the east side of Power Road. (19.1± acres)

### Request:

Requesting the review of an expansion to Monterey Park, including a proposed Express Library.

