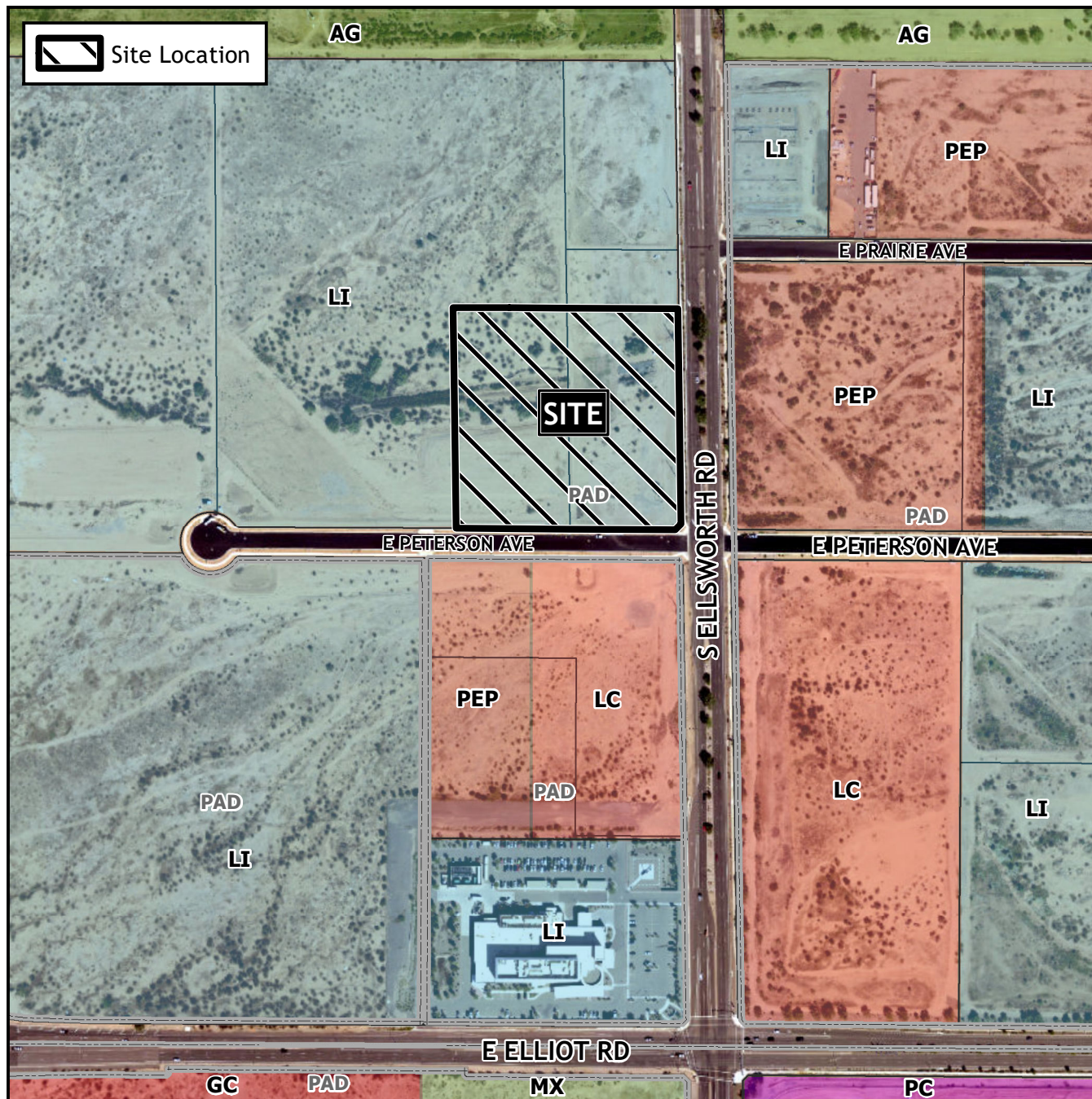


## Design Review Vicinity Map: DRB22-00477



## Case Details

### Case:

DRB22-00477

### Site / Address:

District 6. Within the 3200 to 3400 blocks of South Ellsworth Road (west side) and within the 9000 to 9200 blocks of East Peterson Avenue (north side). Located north of Elliot Road on the west side of Ellsworth Road (8.1± acres).

### Request:

Requesting the review of a hospital.

