



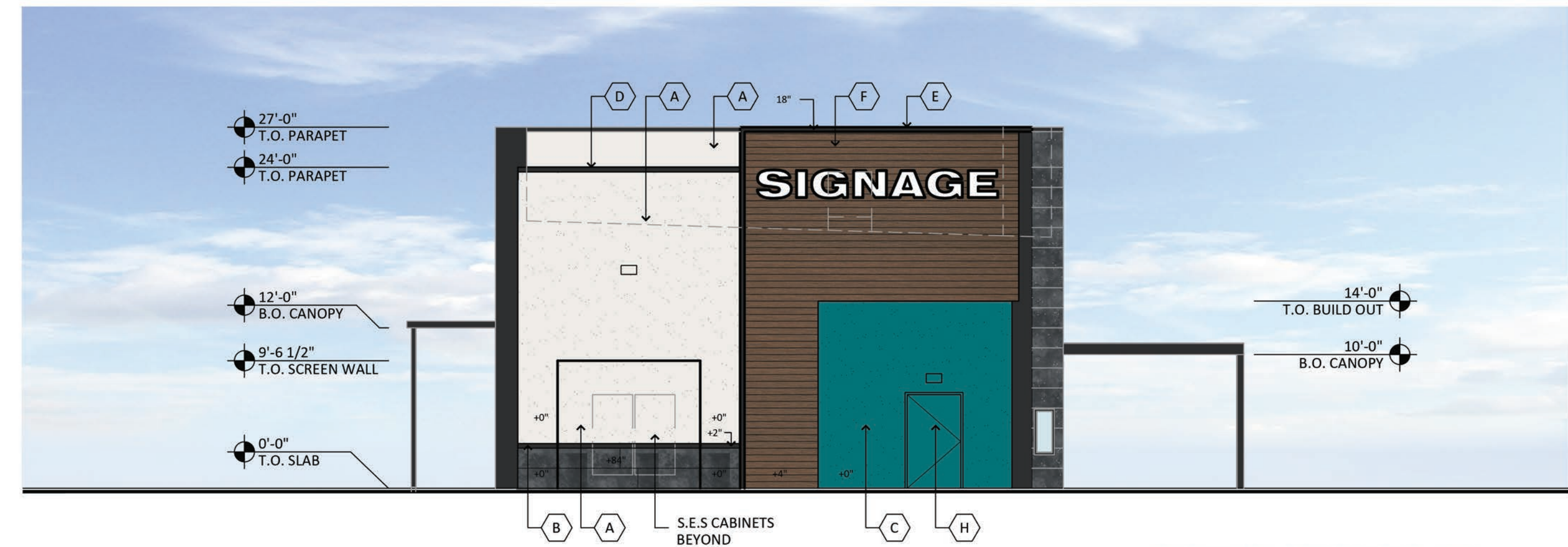
**SOUTH ELEVATION**

SCALE: 1/8" = 1'-0"

**MATERIAL PERCENTAGES**

STUCCO - 5.8%  
COMPOSITE WOOD - 39.2%  
GLAZING - 41.6%

FIBER CEMENT - 9.1%  
METAL - 4.3%



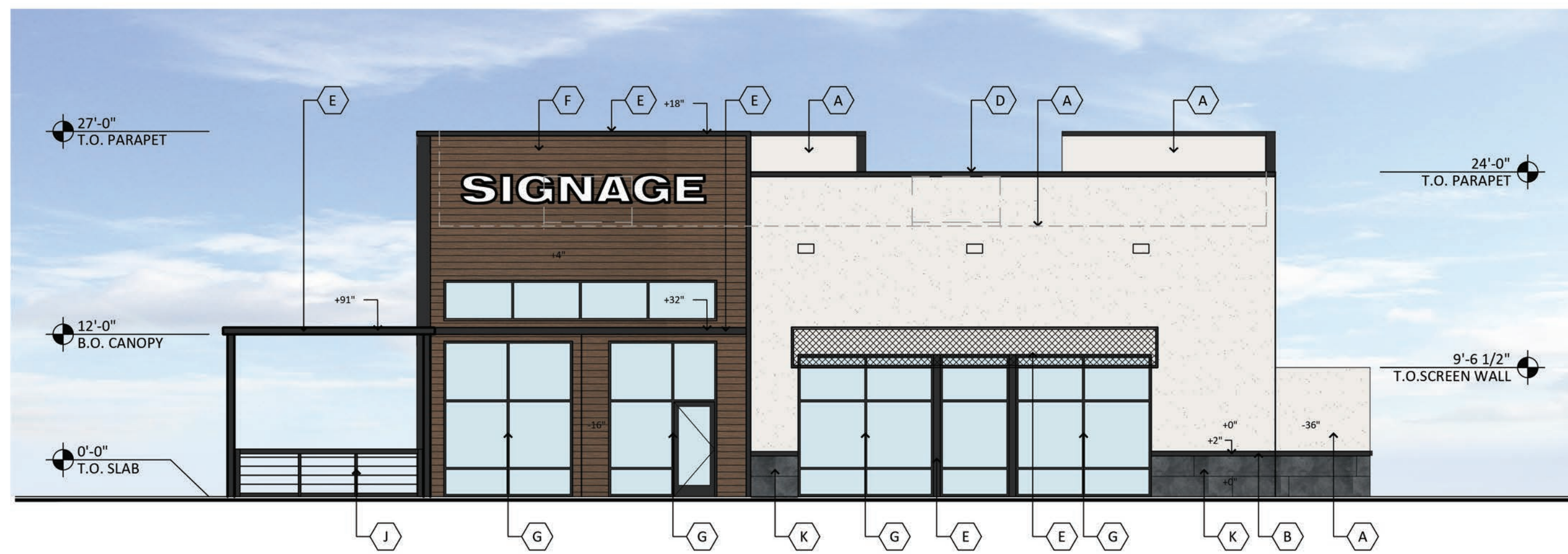
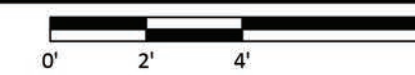
**NORTH ELEVATION**

SCALE: 1/8" = 1'-0"

**MATERIAL PERCENTAGES**

STUCCO - 48.4%  
COMPOSITE WOOD - 32.1%  
GLAZING - 1%

FIBER CEMENT - 9.7%  
METAL - 9.8%



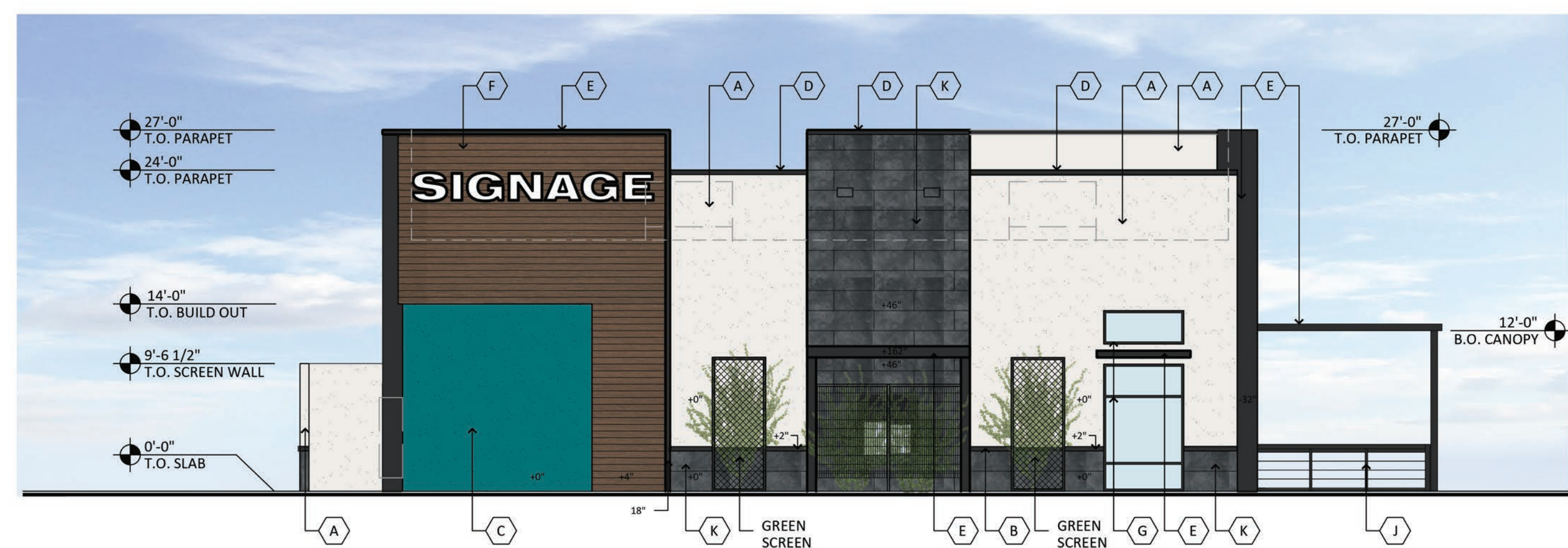
**EAST ELEVATION**

SCALE: 1/8" = 1'-0"

**MATERIAL PERCENTAGES**

STUCCO - 35.6%  
COMPOSITE WOOD - 21.3%  
GLAZING - 32.3%

FIBER CEMENT - 3.0%  
METAL - 7.8%



**WEST ELEVATION**

SCALE: 1/8" = 1'-0"

**MATERIAL PERCENTAGES**

STUCCO - 47.0%  
COMPOSITE WOOD - 19.0%  
GLAZING - 4.1%

FIBER CEMENT - 20.6%  
METAL - 9.3%



**MATERIAL AND COLORS**

<b>A</b> PAINTED STUCCO: FINISH: FINE SAND MFG: SHERWIN WILLIAMS COLOR: SW 7004 "SNOWBOUND"	<b>F</b> COMPOSITE WOOD SIDING: MFG: RESYSTA COLOR: DARK SIAM SPEC: SIDING 6" PROFILE
<b>B</b> PAINTED STUCCO: MFG: SHERWIN WILLIAMS COLOR: SW 6258 "TRICORN BLACK"	<b>G</b> MULLIONS: MFG: KAWNEER ALUMINUM COLOR: BLACK
<b>C</b> PAINTED STUCCO: FINISH: FINE SAND MFG: SHERWIN WILLIAMS COLOR: SW 6967 "MAXI TEAL"	<b>H</b> PAINTED HOLLOW METAL DOORS: MFG: SHERWIN WILLIAMS COLOR: SW 6967 "MAXI TEAL"
<b>D</b> PAINTED METAL PARAPET CAP: MFG: SHERWIN WILLIAMS COLOR: SW 6258 "TRICORN BLACK"	<b>J</b> PAINTED METAL RAILING: MFG: SHERWIN WILLIAMS COLOR: SW 6258 "TRICORN BLACK"
<b>E</b> PAINTED METAL: MFG: SHERWIN WILLIAMS COLOR: SW 6258 "TRICORN BLACK"	<b>K</b> PRECAST CONCRETE PANEL: MFR: NICHIIA SPEC: CORBOSA COLOR: SHADOW

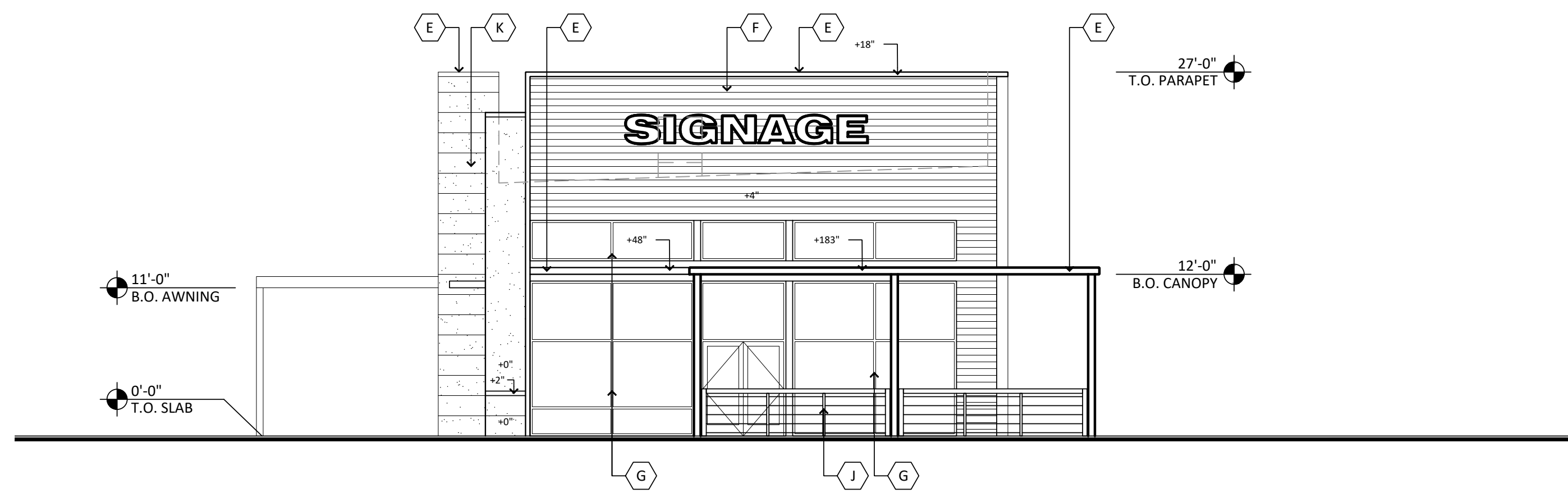
MESA RANCH - ONO'S HAWAIIAN BBQ  
1008 E SOUTHERN AVENUE  
MESA, ARIZONA 85204  
DATE: 05-15-2022 (PRELIMINARY)

© 2022 R K A A  
ARCHITECTS, INC. ALL  
RIGHTS RESERVED.  
THIS DRAWING IS AN  
INSTRUMENT OF  
SERVICE. IT IS THE  
PROPERTY OF R K A A  
ARCHITECTS, INC. AND  
MAY NOT BE  
DUPLICATED, USED OR  
DISCLOSED WITHOUT  
WRITTEN PERMISSION  
OF THE ARCHITECT.

EL-1

RKAA# 22063.00





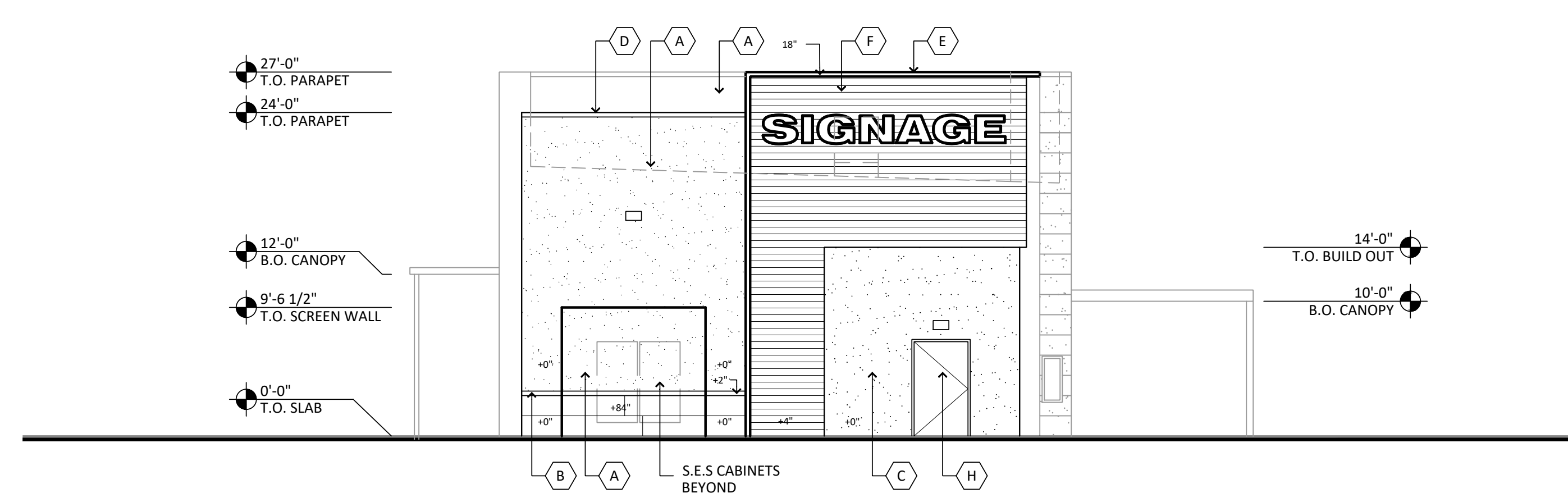
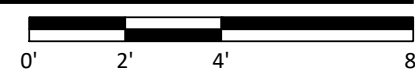
**SOUTH ELEVATION**

SCALE: 1/8" = 1'-0"

**MATERIAL PERCENTAGES**

STUCCO - 5.8%  
COMPOSITE WOOD - 39.2%  
GLAZING - 41.6%

FIBER CEMENT - 9.1%  
METAL - 4.3%



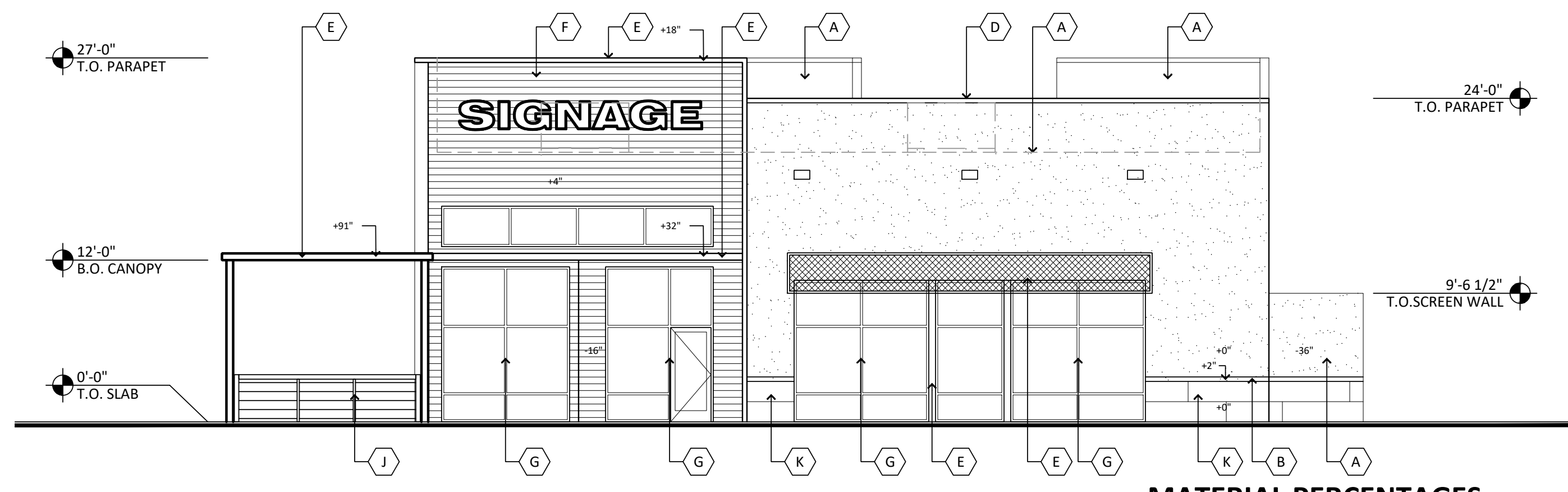
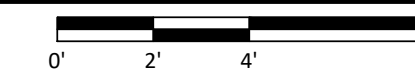
**NORTH ELEVATION**

SCALE: 1/8" = 1'-0"

**MATERIAL PERCENTAGES**

STUCCO - 48.4%  
COMPOSITE WOOD - 32.1%  
GLAZING - 1%

FIBER CEMENT - 9.7%  
METAL - 9.8%



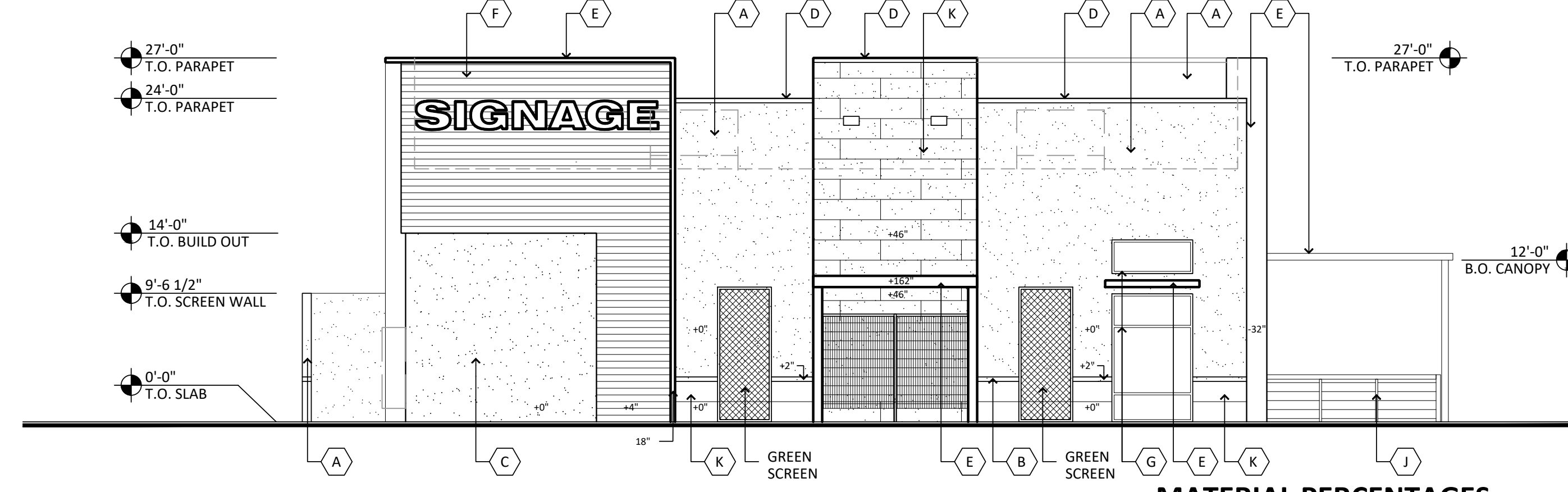
**EAST ELEVATION**

SCALE: 1/8" = 1'-0"

**MATERIAL PERCENTAGES**

STUCCO - 35.6%  
COMPOSITE WOOD - 21.3%  
GLAZING - 32.3%

FIBER CEMENT - 3.0%  
METAL - 7.8%



**WEST ELEVATION**

SCALE: 1/8" = 1'-0"

**MATERIAL PERCENTAGES**

STUCCO - 47.0%  
COMPOSITE WOOD - 19.0%  
GLAZING - 4.1%

FIBER CEMENT - 20.6%  
METAL - 9.3%



**MATERIAL AND COLORS**

<p><b>A PAINTED STUCCO:</b> FINISH: FINE SAND MFG: SHERWIN WILLIAMS COLOR: SW 7004 "SNOWBOUND"</p>	<p><b>F COMPOSITE WOOD SIDING:</b> MFG: RESYSTA COLOR: DARK SIAM SPEC: SIDING 6" PROFILE</p>
<p><b>B PAINTED STUCCO:</b> MFG: SHERWIN WILLIAMS COLOR: SW 6258 "TRICORN BLACK"</p>	<p><b>G MULLIONS:</b> MFG: KAWNEER ALUMINUM COLOR: BLACK</p>
<p><b>C PAINTED STUCCO:</b> FINISH: FINE SAND MFG: SHERWIN WILLIAMS COLOR: SW 6967 "MAXI TEAL"</p>	<p><b>H PAINTED HOLLOW METAL DOORS:</b> MFG: SHERWIN WILLIAMS COLOR: SW 6967 "MAXI TEAL"</p>
<p><b>D PAINTED METAL PARAPET CAP:</b> MFG: SHERWIN WILLIAMS COLOR: SW 6258 "TRICORN BLACK"</p>	<p><b>J PAINTED METAL RAILING:</b> MFG: SHERWIN WILLIAMS COLOR: SW 6258 "TRICORN BLACK"</p>
<p><b>E PAINTED METAL:</b> MFG: SHERWIN WILLIAMS COLOR: SW 6258 "TRICORN BLACK"</p>	<p><b>K PRECAST CONCRETE PANEL:</b> MFR: NICHHA SPEC: CORBOSA COLOR: SHADOW</p>

MESA RANCH - ONO'S HAWAIIAN BBQ  
1008 E SOUTHERN AVENUE  
MESA, ARIZONA 85204  
DATE: 05-15-2022 (PRELIMINARY)

© 2022 R K A A ARCHITECTS, INC. ALL RIGHTS RESERVED. THIS DRAWING IS AN INSTRUMENT OF SERVICE. IT IS THE PROPERTY OF R K A A ARCHITECTS, INC. AND MAY NOT BE DUPLICATED, USED OR DISCLOSED WITHOUT WRITTEN PERMISSION OF THE ARCHITECT.

EL-1

RKAA# 22063.00

