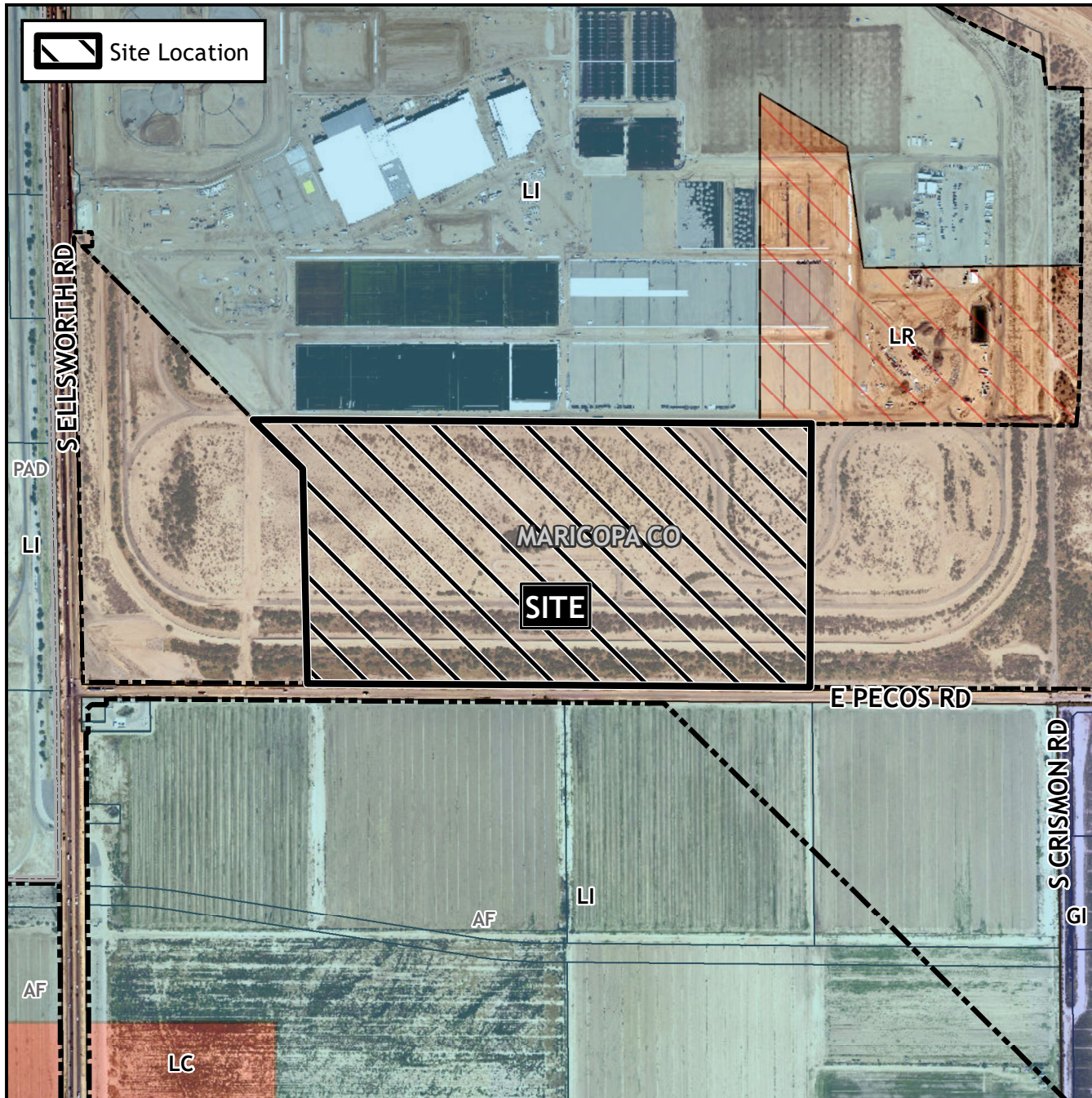


# Planning and Zoning Vicinity Map: ZON22-00268



## Case Details

**CASE:**

ZON22-00268

**PRE-PLAT :** ☒

### **SITE / ADDRESS:**

District 6. Within the 9200 to 9600 blocks of East Pecos Road (north side) and the 6400 to 6800 blocks of South Ellsworth Road (east side). Located north of Pecos Road and east of Ellsworth Road. (±87 acres)

### **REQUEST:**

Preliminary Plat. This request will allow for an industrial development.

