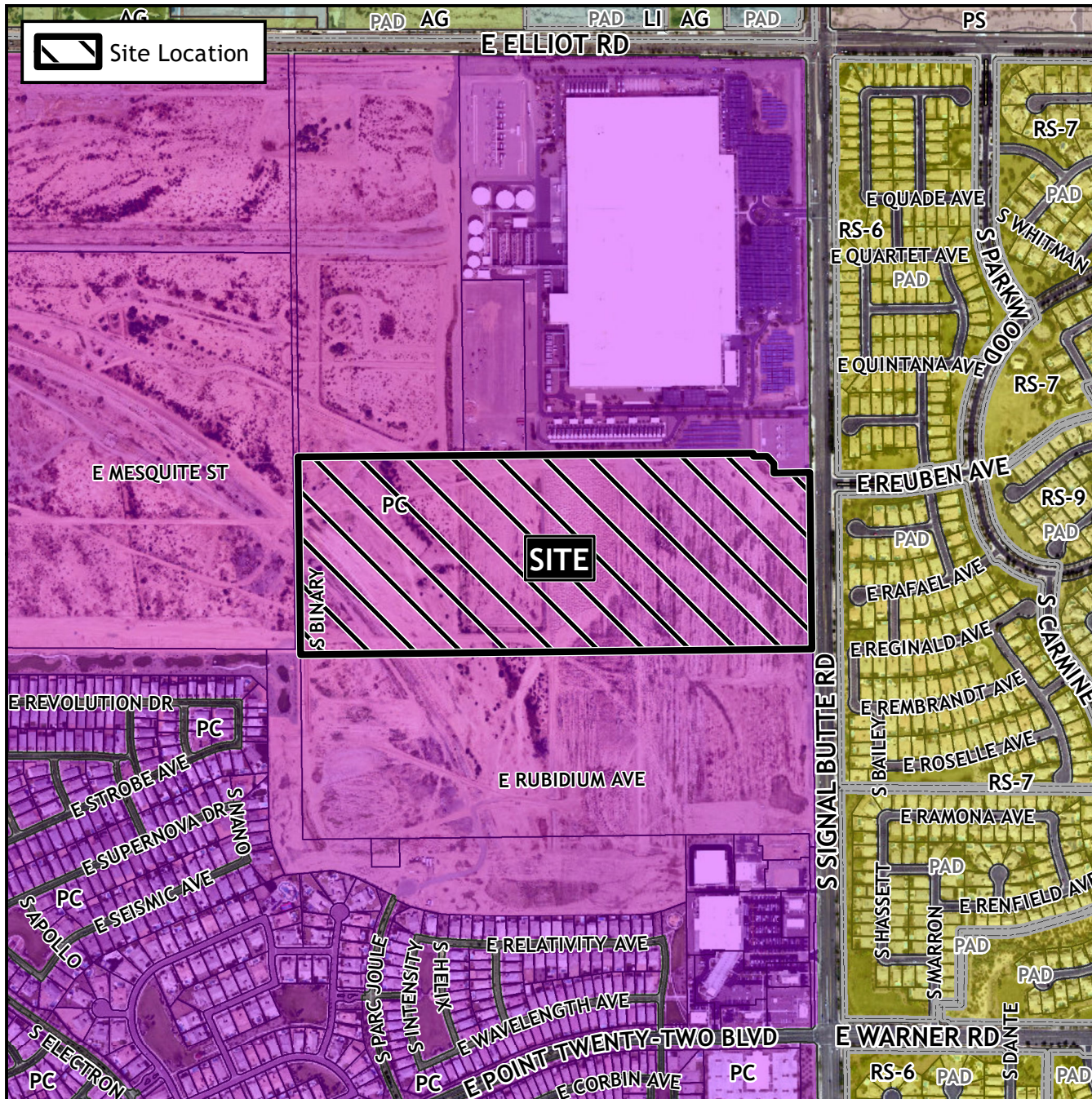


Planning and Zoning Vicinity Map: ZON22-00257



Case Details

CASE:

ZON22-00257

PRE-PLAT : ☐

SITE / ADDRESS:

District 6. Within the 3900 to 4100 blocks of South Signal Butte Road (west side) and within the 3900 to 4100 blocks of the South Binary alignment (east side). Located south of Elliot Road on the west side of Signal Butte Road. (65.3± acres).

REQUEST:

Site Plan Review. This request will allow for an industrial development.

