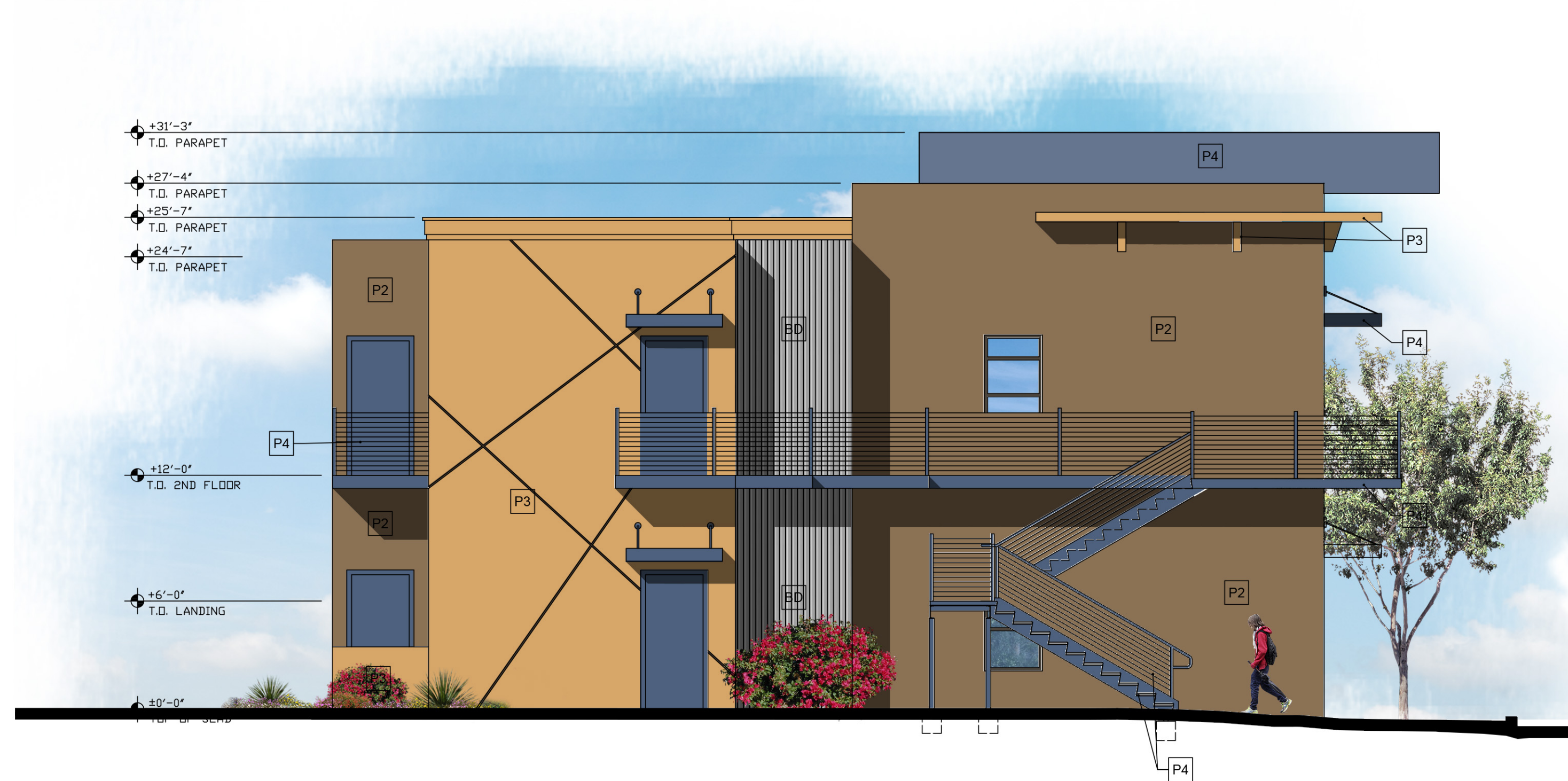
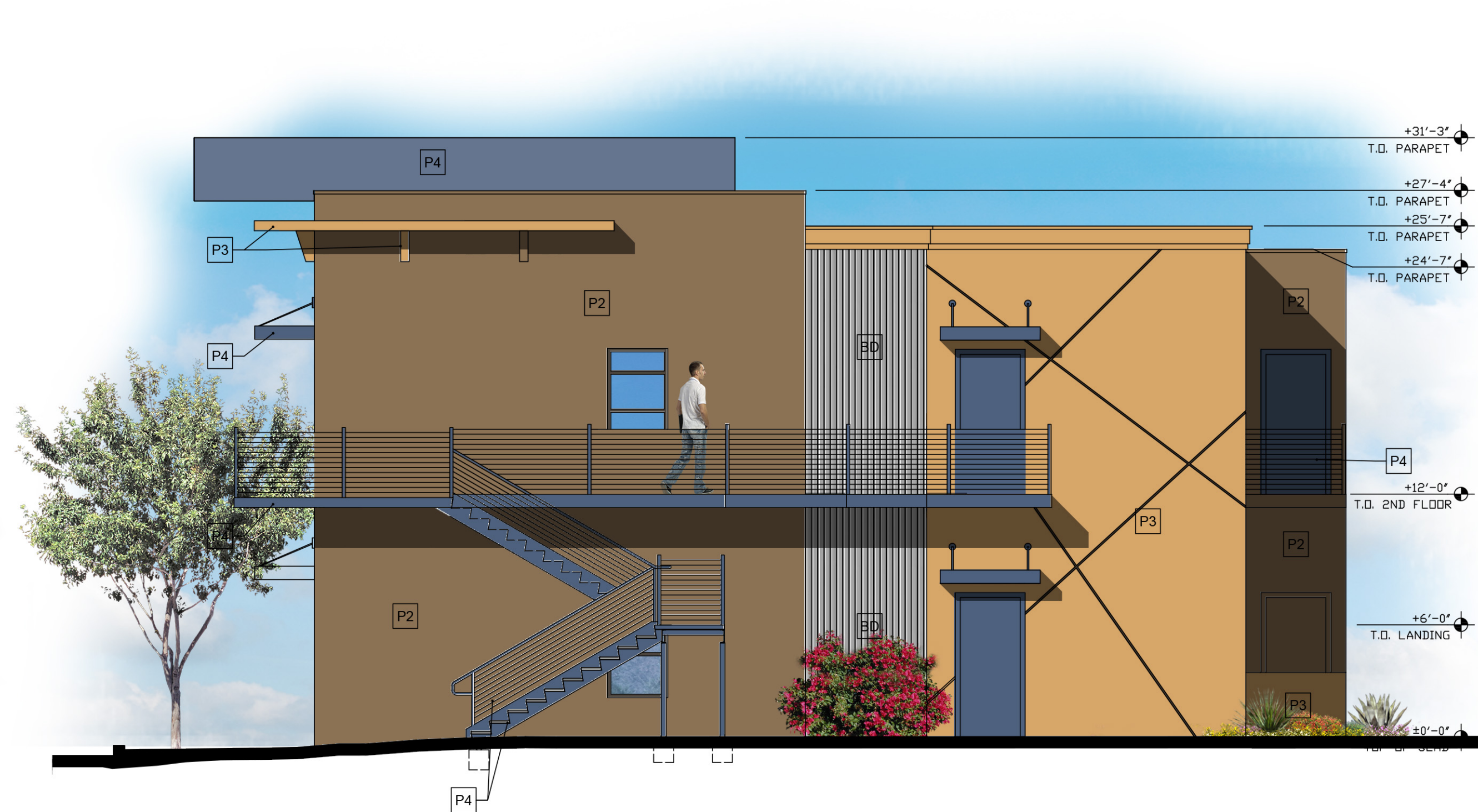


GENERAL NOTES:	
1. SEE STRUCTURAL DRAWINGS FOR Lintel INFORMATION.	
2. SEE DOOR SCHEDULE FOR ROLL-UP DOOR HEIGHTS.	
3. SEE STRUCTURAL DRAWINGS FOR CONTROL JOINT LOCATIONS.	
GLAZING KEY:	
MATERIAL:	DESCRIPTION:
NON RATED EXTERIOR FRAMES:	ARCADIA 2 X 4 1/2" BROWN ALUMINUM STOREFRONT
NON-RATED EXTERIOR GLAZING:	1" GRAY REFLECTIVE INSULATED GLAZING
ELEVATION NOTES:	
1. FIELD VERIFY ALL EXACT CONDITIONS AND REPORT ANY DISCREPANCIES TO THE ARCHITECT IMMEDIATELY, TYP.	
2. ALL NEW GLASS PANELS TO BE TEMPERED, WHERE OCCURS BY CODE.	
3. ALL NEW SIGNAGE TO BE BY SEPARATE CONTRACTOR, G.C. TO PROVIDE POWER AND COORDINATE DETAILS WITH ACTUAL SITE CONDITIONS, TYP.	
4. ALL EXTERIOR WINDOWS & DOORS TO MEET THE 2018 I.E.C.C. COM-CHECK.	
5. NEW EXTERIOR STOREFRONT SYSTEM MFG BY ARCADIA FRONT GLAZED ALUMINUM STOREFRONT FOR 1" OVERALL BLUE REFLECTIVE INSULATED GLAZING - CLEAR ANODIZED CLASS II FINISH.	
6. SEE STRUCTURAL DRAWINGS FOR EXTERIOR CANOPY CONNECTIONS AND DETAILS.	
7. SEE SCHEDULES FOR ALL DOOR AND WINDOW TYPES AND NOTES - SHT. A8.0	
BUILDING MATERIAL LEGEND:	
PER Section 11-5-B(5) of the MZO.	
FRONT/REAR ELEVATIONS:	
STUCCO SYSTEM, PAINTED 3,468 SF - 45%	
VERTICAL CORRUGATED METAL PANEL SYSTEM 1,110 SF - 15%	
SIDE ELEVATIONS:	
STUCCO SYSTEM, PAINTED 2,278 SF - 32%	
VERTICAL CORRUGATED METAL PANEL SYSTEM 236 SF - 4%	
TOTAL: 7,152 SF	
PAINT NOTES:	
1. PAINTER TO PROVIDE COLOR SCHEME WITH ALL DECORATIVE BANDS MASKED AND PAINTED IN COLORS AS SELECTED.	
2. SEALANTS FOR THE PROJECT TO MATCH ADJACENT MATERIAL COLORS - NO WHITE OR OFF WHITE COLORS.	
3. PAINTER TO PREPARE SAMPLES WITH APPROPRIATE COLOR TO BE APPROVED BY OWNER PRIOR TO APPLICATION ON BUILDING FACADES.	
4. PAINTER TO PROVIDE TWO COATS OF SEALER TO ALL EXPOSED NATURAL BLOCK/ PRECAST CONCRETE, UNPAINTED CONCRETE AND OTHER MATERIALS AS REQUIRED TO PROVIDE A WEATHER SEALED PROJECT.	
PAINT KEY:	
KEY:	DESCRIPTION:
P1	SHERWIN WILLIAMS "SW 7023 'REQUISITE GRAY'"
P2	SHERWIN WILLIAMS "SW 3114 'FALLEN LEAVES'"
P3	SHERWIN WILLIAMS "SW 6381 'ANJOU PEAR'"
P4	SHERWIN WILLIAMS "SW 6531 'LUXE BLUE'"
BD	CORRUGATED METALS (OR EQUAL) 8" BOX RIB



④ EXTERIOR ELEVATION- NORTH
SCALE: 1/8"=1'-0"



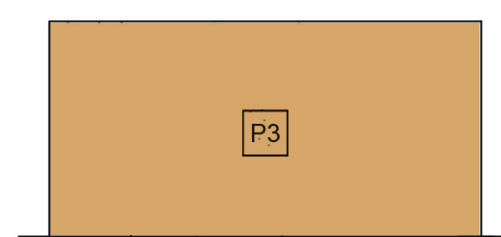
③ EXTERIOR ELEVATION- SOUTH
SCALE: 1/8"=1'-0"



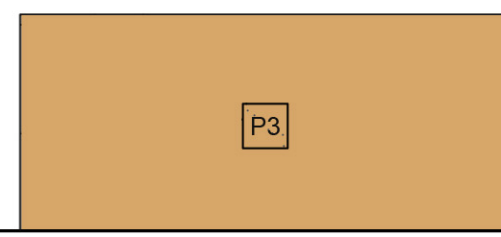
② EXTERIOR ELEVATION- EAST
SCALE: 1/8"=1'-0"



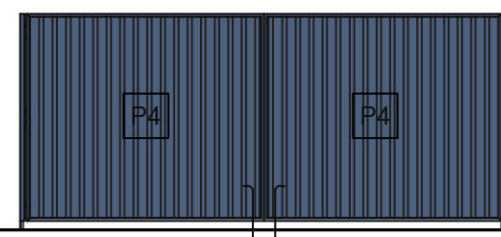
① EXTERIOR ELEVATION- WEST
SCALE: 3/16"=1'-0"



SOUTH ELEVATION



EAST/WEST ELEVATION



NORTH ELEVATION

⑤ ELEVATIONS AT TRASH ENCLOSURE
SCALE: 3/16"=1'-0"